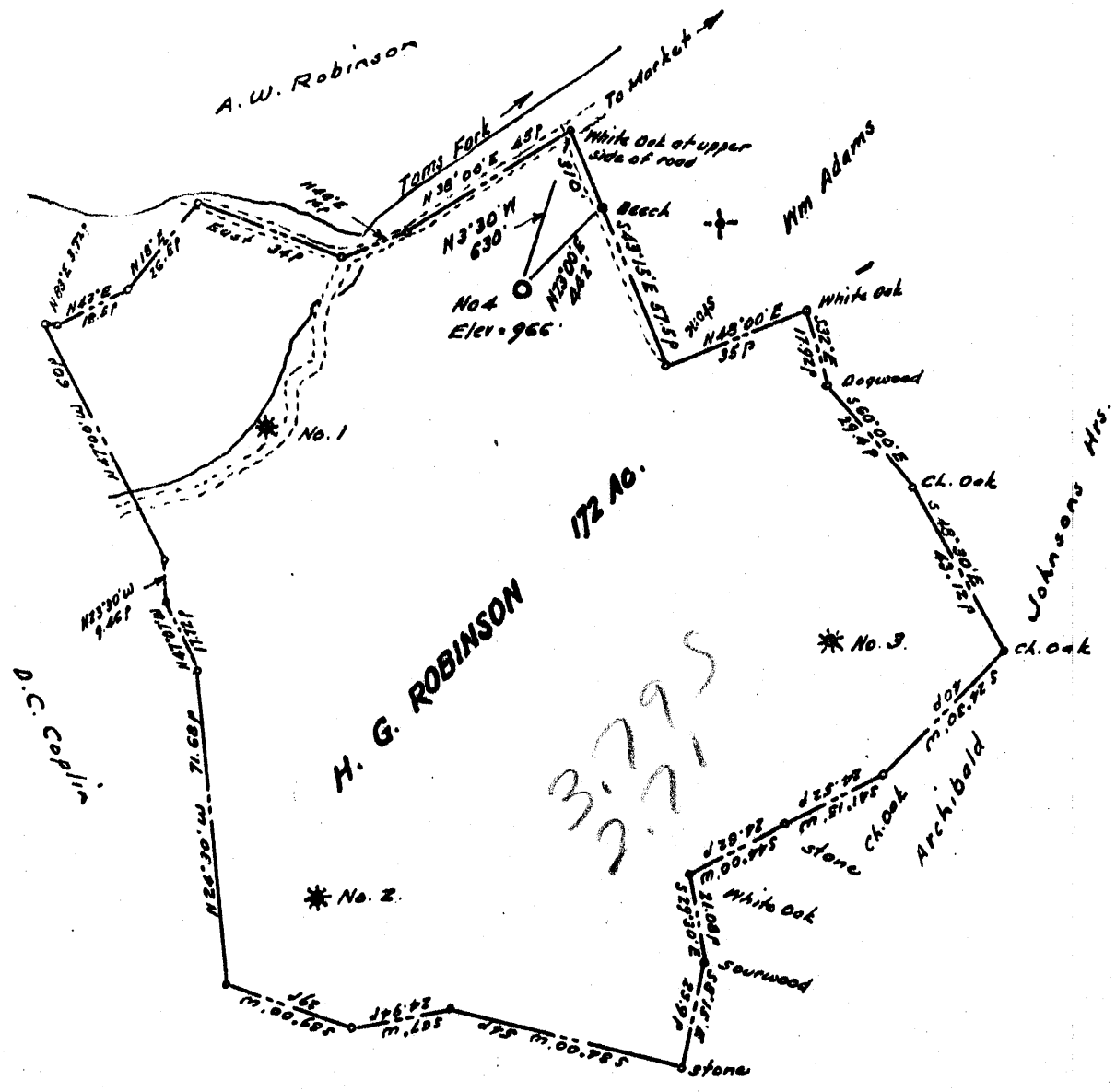


Latitude 39° 15'

Longitude 80° 40'



3.795
2.715

New Location ..
 Drill Deeper
 Abandonment.....

Company UNK GAS CO.
 Address 1/2 Clarence Powell, West Union, W. Va.
 Farm H. G. Robinson
 Tract _____ Acres 172 Lease No. _____
 Well (Farm) No. Four Serial No. _____
 Elevation (Spirit Level) 966'
 Quadrangle Vadis NW
 County Doddridge District New Milton
 Engineer W. H. ...
 Engineer's Registration No. 1227
 File No. _____ Drawing No. _____
 Date May 1962 Scale 1" = 40p = 660'

STATE OF WEST VIRGINIA
 DEPARTMENT OF MINES
 OIL AND GAS DIVISION
 CHARLESTON

WELL LOCATION MAP
 FILE NO. Dod-792

+ Denotes location of well on United States Topographic Maps, scale 1 to 62,500, latitude and longitude lines being represented by border lines as shown.
 - Denotes one inch spaces on border line of original tracing.

6-6-134



STATE OF WEST VIRGINIA
DEPARTMENT OF MINES
OIL AND GAS DIVISION

Quadrangle Vadis

Permit No. DCD- 792

WELL RECORD

Gas & Oil
Oil or Gas Well (KIND)

Company U. N. K. GAS CO. WELL # 4
Address West Union, W. Va. c/o C. Powell
Farm H. G. Robinson Acres 172
Location (waters) Thomas Fork
Well No. #4 Elev. 966'
District New Milton County Doddridge
The surface of tract is owned in fee by H. G. Robinson Address St. Albans, W. Va.
Mineral rights are owned by H. G. Robinson Address St. Albans, W. Va.
Drilling commenced May 21, 1962
Drilling completed June 19, 1962
Date Shot _____ From _____ To _____
With _____
Open Flow 40 /10ths Water in _____ 2" Inch
_____ /10ths Merc. in _____ Inch
Volume 383,000 Cu. Ft.
Rock Pressure 4000 lbs. 12 hrs.
Oil 4 bbls., 1st 24 hrs.

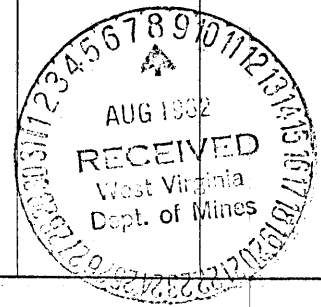
Casing and Tubing	Used in Drilling	Left in Well	Packers
Size			
16	14ft.	14ft.	Kind of Packer
13			
10	232ft.		Size of
8 3/4	569ft.		
6 3/4	1273ft.		Depth set
5 3/16	2052ft.	2052'	
4-1/2	2173ft.		Perf. top
2			Perf. bottom
Liners Used			Perf. top
Tubing		2055'	Perf. bottom

WELL ACIDIZED _____
WELL FRACTURED Yes

CASING CEMENTED Yes SIZE 4-1/2 Co. Ft. 600ft Date
Garaton Service 1 sk aquagel & 10 sks.
COAL WAS ENCOUNTERED AT _____ Hi Early Cement
FEET _____ INCHES
NO FEET NO INCHES NO FEET NO INCHES
FEET INCHES FEET INCHES

RESULT AFTER TREATMENT 36BBLs. 24 hr.-
ROCK PRESSURE AFTER TREATMENT 500 12 hrs.
Fresh Water none Feet _____ Salt Water Little salt water at 1525' cemented above this. Feet _____

Formation	Color	Hard or Soft	Top	Bottom	Oil, Gas or Water	Depth	Remarks
Red Rock			0	50			
Slate			50	100			
Red Rock			100	130			
Slate			130	200			
Red Rock			200	275			
Slate			275	300			
Red Rock			300	355			
Slate			355	400			
Red Rock			400	410			
Slate			410	450			
Red Rock			450	490			
Slate			490	515			
Sand			515	565			
Slate&Shells			565	654			
Lime			654	666			
Slate			666	715			
Sand			715	762			
Slate			762	780			
Red Rock			780	812			
Slate			812	820			
Red Rock			820	858			
Slate			858	876			
Red Rock			876	910			
Slate			910	935			
Red Rock			935	950			
Slate&Shells			950	1024			
Red Rock			1024	1100			
Slate			1100	1126			
Rock	Pink		1126	1136			



Formation	Color	Hard or Soft	Top <i>f</i>	Bottom	Oil, Gas or Water	Depth Found	Remarks
Line	Black		1136	1146			
Slate			1146	1205			
Slate			1205	1310			
Sand			1310	1340			
Slate			1340	1385			
Sand			1385	1400			
Slate			1400	1447			
Sand			1447	1474			
Sands			1474	1480			
Sand			1480	1540		Little water at 1490-1495	
Slate			1540	1545			
Sand			1545	1565			
Slate			1565	1687			
Sand		Lime		1687	1744		
Sand				1744	1785		
Slate				1785	1947		
Lime				1947	2000		
Slate			2000	2005			
Line			2005	2020			
Sand			2020	2038	Oil 2021-2025		
Lime (Big)	Gray		2038	2085	Gas Oil 2085		
Sand			2085	2173			
Slate			2173 (Total Depth)				

Date August 6, 1962

APPROVED U. R. K. WEBB, Owner

By Clarence Powell, Agent
(Title)