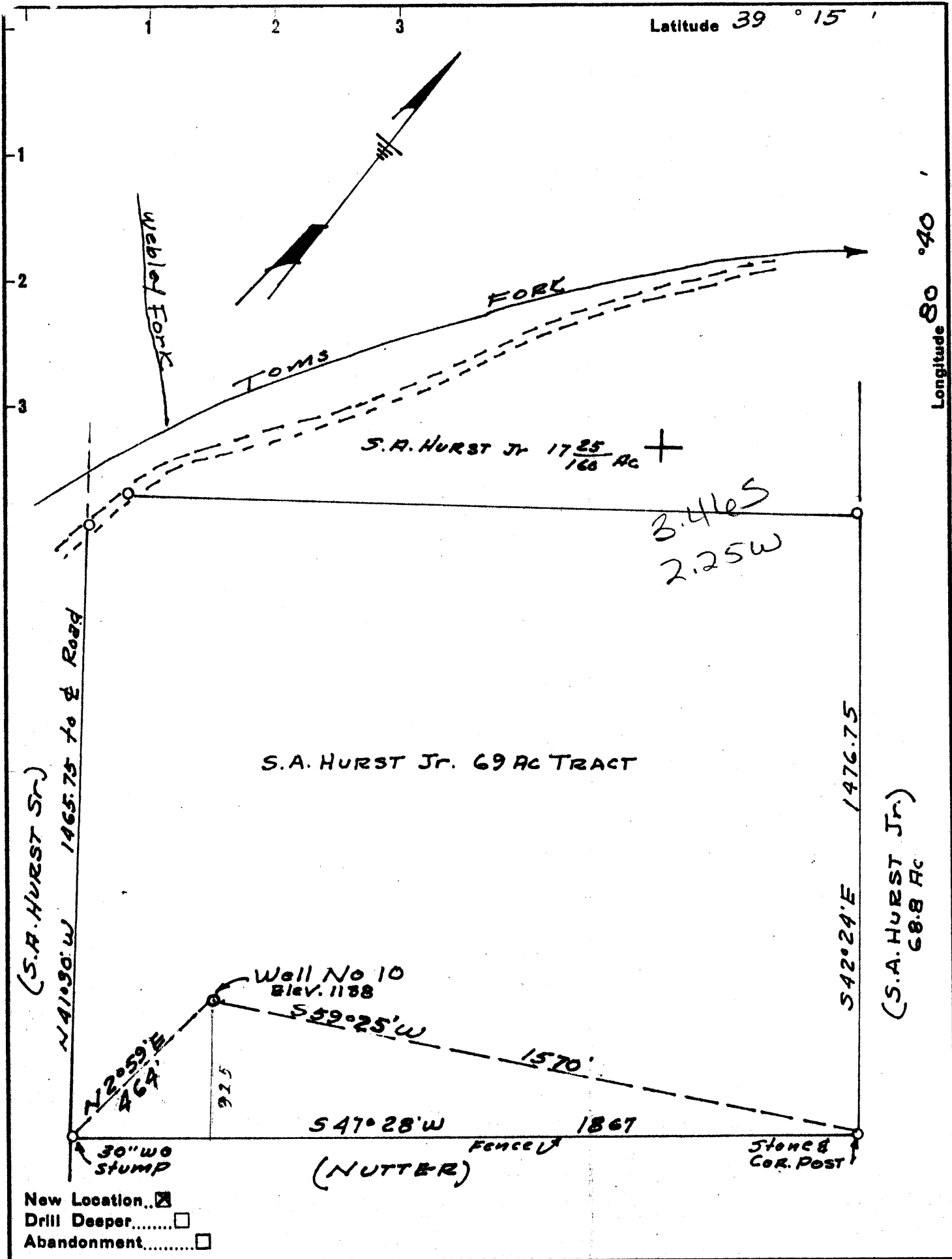


Latitude 39 ° 15 ' 1

Longitude 80 ° 40 ' 1



New Location...   
 Drill Deeper.....   
 Abandonment.....

Company DEVONIAN GAS & OIL CO  
 Address 2503 COMMONWEALTH BLDG. PITTSBURG 22, PA.  
 Farm S.A. HURST Jr.  
 Tract \_\_\_\_\_ Acres 69 Lease No. \_\_\_\_\_  
 Well (Farm) No. 10 Serial No. \_\_\_\_\_  
 Elevation (Spirit Level) 1138  
 Quadrangle VADIS NW  
 County Doddridge District New Milton  
 Engineer H. F. Johnston  
A.L. Marshall Surveyor  
 Engineer's Registration No. 2492  
 File No. \_\_\_\_\_ Drawing No. \_\_\_\_\_  
 Date MAY 11, 1962 Scale 1" = 300'

STATE OF WEST VIRGINIA  
 DEPARTMENT OF MINES  
 OIL AND GAS DIVISION  
 CHARLESTON

**WELL LOCATION MAP**  
 FILE NO. DOD-789

+ Denotes location of well on United States Topographic Maps, scale 1 to 62,500, latitude and longitude lines being represented by border lines as shown.

- Denotes one inch spaces on border line of original tracing.