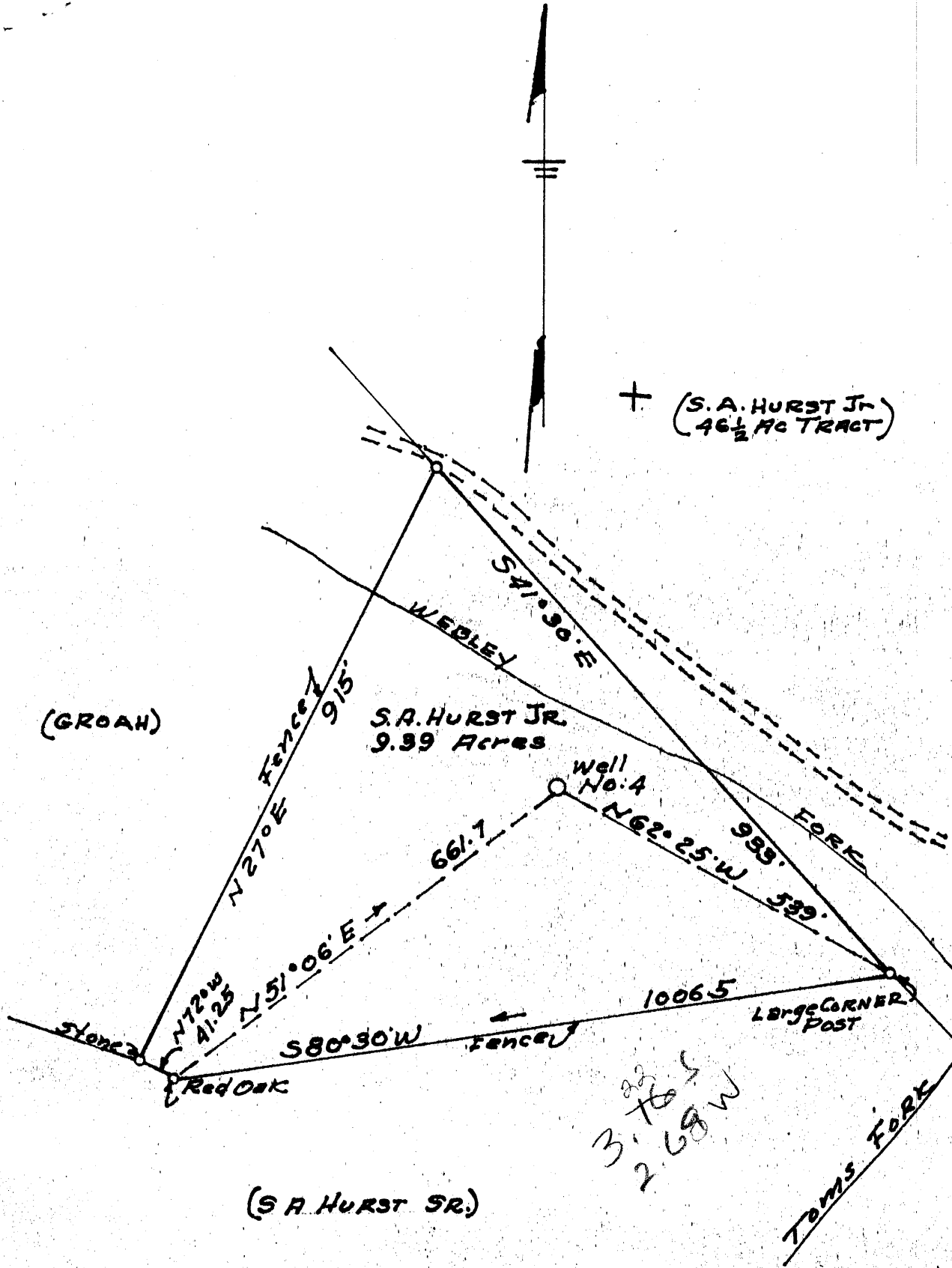


Latitude 39 ° 15 ' 1

Longitude 80 ° 40 ' 1



(Corrected Plat)

New Location...   
 Drill Deeper.....   
 Abandonment.....

Company DEVONIAN GAS & OIL CO  
 Address 2003-COMMONWEALTH BLDG. PITTSBURG 22, PA.  
 Farm S A HURST JR.  
 Tract 9.39 Acres \_\_\_\_\_ Lease No. \_\_\_\_\_  
 Well (Farm) No. 4 Serial No. \_\_\_\_\_  
 Elevation (Spirit Level) 902  
 Quadrangle VR01S NW  
 County DODDRIDGE District NEW MILTON  
 Engineer H. F. Jabutson  
 Engineer's Registration No. A.L. MARSHALL-SURVEYOR 2492  
 File No. \_\_\_\_\_ Drawing No. \_\_\_\_\_  
 Date MAY 10, 1962 Scale 1" = 200'

STATE OF WEST VIRGINIA  
 DEPARTMENT OF MINES  
 OIL AND GAS DIVISION  
 CHARLESTON

WELL LOCATION MAP  
 FILE NO. Doc-783

+ Denotes location of well on United States Topographic Maps, scale 1 to 62,500, latitude and longitude lines being represented by border lines as shown.

- Denotes one inch spaces on border line of original tracing.



STATE OF WEST VIRGINIA  
DEPARTMENT OF MINES  
OIL AND GAS DIVISION

Quadrangle Vadis

Permit No. Dod 783

WELL RECORD

Oil or Gas Well Oil & Gas  
(KIND)

Company Devonian Gas & Oil Company  
Address 1112 Benedum Trees Bldg., Pgh. 22, Pa.  
Farm Stokes Hurst, Jr., et ux. Acres 9.39  
Location (waters) Tom's Fork  
Well No. 4 Elev. 902 Gr.  
District New Milton County Doddridge  
The surface of tract is owned in fee by S. A. Hurst, Jr. et ux. 102 Beech St. Address West Union, W. Va.  
Mineral rights are owned by S. A. Hurst, Jr. (same) & J. C. Dicks et ux. Address Petroleum, W. Va.

Casing and Tubing	Used in Drilling	Left in Well	Packers
Size			Kind of Packer
16			
13			
10 3/4	20	20	Size of
8 3/4			
6 3/4			Depth set
5 1/2	2800	2800	
3			Perf. top
2"		2590	Perf. bottom
Liners Used			Perf. top
			Perf. bottom

Drilling commenced 6-13-62  
Drilling completed 7-4-62  
Date ~~start~~ Perf. 7-12-62 From 2604 To  
With 2 quad radial jets (8 - 1" holes)  
Open Flow /10ths Water in \_\_\_\_\_ Inch  
/10ths Merc. in \_\_\_\_\_ Inch  
Volume \_\_\_\_\_ Cu. Ft.  
Rock Pressure \_\_\_\_\_ lbs. \_\_\_\_\_ hrs.  
Oil \_\_\_\_\_ b'ls., 1st 24 hrs.  
WELL ACIDIZED 7-13-62 - 1000 gals MCA

CASING CEMENTED 5 1/2 SIZE 2800 No. Ft. 7-4-62 Date  
Cementing data attached herewith  
250 sks. cement-6 sks. aquagel-Halliburton  
COAL WAS ENCOUNTERED AT None FEET INCHES  
\_\_\_\_\_ FEET \_\_\_\_\_ INCHES \_\_\_\_\_ FEET \_\_\_\_\_ INCHES  
\_\_\_\_\_ FEET \_\_\_\_\_ INCHES \_\_\_\_\_ FEET \_\_\_\_\_ INCHES

WELL FRACTURED 7-13-62 - 1000 bbl. fresh water & 50,000 lbs 20-40 sand

RESULT AFTER TREATMENT 20 BOPD oil Gas Vol. ??

ROCK PRESSURE AFTER TREATMENT 600 # - 24 hrs.

Fresh Water \_\_\_\_\_ Feet Salt Water \_\_\_\_\_ Feet

Formation	Color	Hard or Soft	Top	Bottom	Oil, Gas or Water	Depth	Remarks
Gravel	red	soft	0	20			
Shale & sd.	red, grey	medium	20	100			
Shale	grey	soft	100	250			
Sand	tan	hard	250	330			
Shale	grey	soft	330	390			
Sand	yellow	hard	390	450			
Shale, sdy	grey	medium	450	910			
Shale	black	soft	910	1145			
Shale	grey	soft	1145	1300			
Sand	brown	hard	1300	1385			
Shale	grey	medium	1385	1570			
Sand	clear	hard	1570	1665			
Shale	grey	soft	1665	1855	none		
Lime	brown	hard	-1855	1885			
Sand	clear	hard	1885	1900	none		
Lime	tan-white	hard	-1900	1951			
Sand, limey	yellow	hard	1951	2014	oil & gas	1956	
Lime	white	hard	2014	2048			
Silt & shale	grey-green	medium	2048	2385			
Sand & shale	grey	hard	-2385	2395	none		
Shale	green	medium	2395	2601			
Sand	clear	hard	2601	2608	oil	2604	
Shale	green	soft	2608	2800			30' Sand
TD				2800			

(over)

