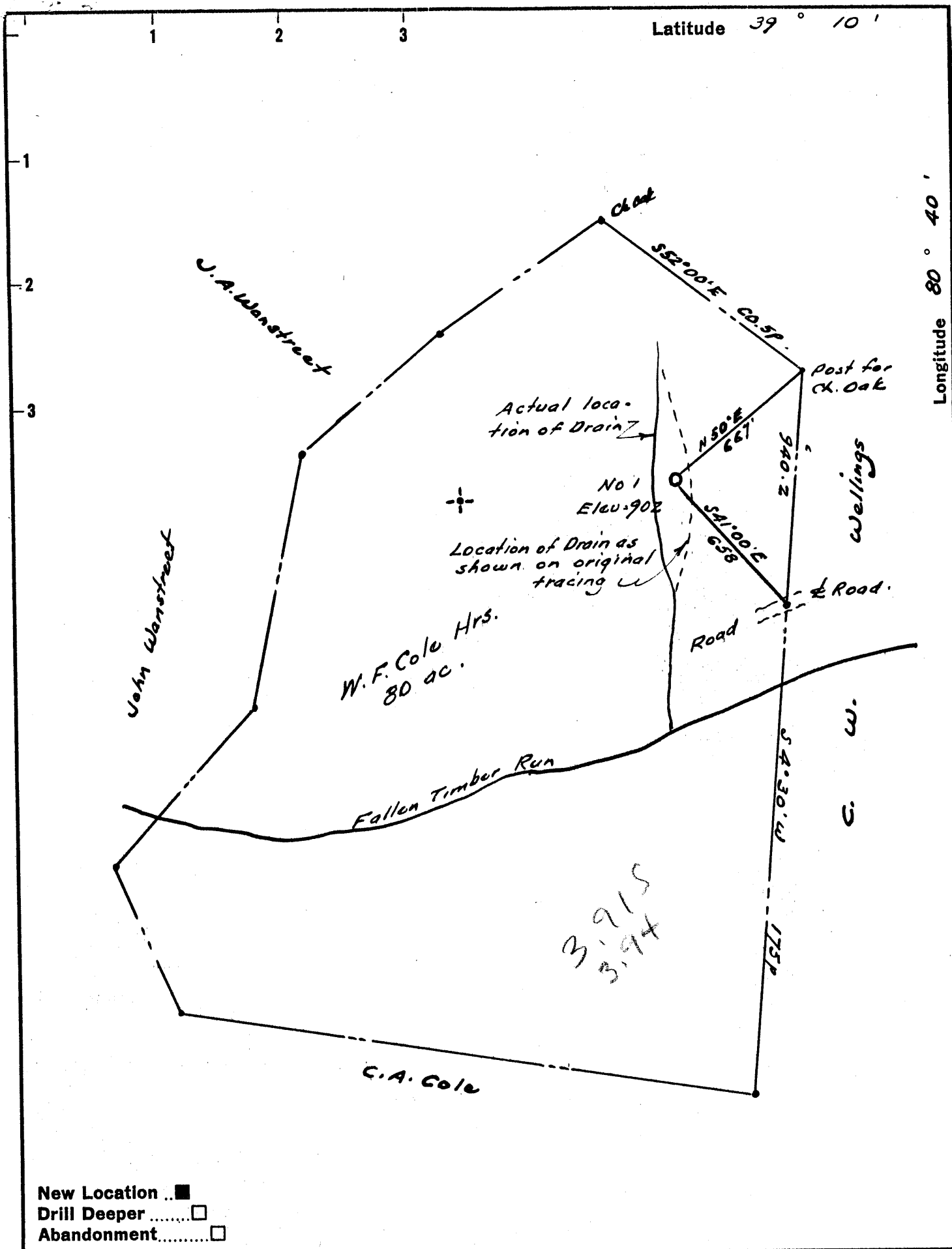


MM



New Location ..
 Drill Deeper
 Abandonment.....

Company McAlester Fuel Co. & R. G. Lawton
 Address Magnolia, Arkansas.
 Farm W. F. Cole Hrs.
 Tract _____ Acres 80 Lease No. _____
 Well (Farm) No. One Serial No. _____
 Elevation (Spirit Level) 902
 Quadrangle Vadis WC
 County Doddridge District Cow
 Engineer W. H. Stewart
 Engineer's Registration No. 1227
 File No. _____ Drawing No. _____
 Date March 1962 Scale 1" = 300' = 495'

STATE OF WEST VIRGINIA
 DEPARTMENT OF MINES
 OIL AND GAS DIVISION
 CHARLESTON

WELL LOCATION MAP
 FILE NO. Dod-730 (Rev.)

+ Denotes location of well on United States Topographic Maps, scale 1 to 62,500, latitude and longitude lines being represented by border lines as shown.
 - Denotes one inch spaces on border line of original tracing.



STATE OF WEST VIRGINIA
DEPARTMENT OF MINES
OIL AND GAS DIVISION 6

Quadrangle Vadis

Permit No. DOD-730

WELL RECORD

Oil or Gas Well Gas
(KIND)

Company McAlester Fuel Company & R. G. Lawton
Address Box 210 - Magnolia, Arkansas
Farm W. F. Cole Heirs #1 Acres 80
Location (waters) _____
Well No. 1 Elev. 902'
District Cove County Doddridge
The surface of tract is owned in fee by Paul W. Cole et al
Address Troy West, Va.
Mineral rights are owned by Paul W. Cole et al
Address Troy West, Virginia

Drilling commenced 3-1-62
Drilling completed 4-3-62
Date Shot 3-26-62 From 2013' To 2020'
With 6-shots/ft.
Open Flow 10ths Water in _____ Inch
2 /10ths Merc. in 2 Inch
Volume _____ Cu. Ft.
Rock Pressure _____ lbs. _____ hrs.
Oil _____ bbls., 1st 24 hrs.
WELL ACIDIZED 250-gallons mud acid

Casing and Tubing	Used in Drilling	Left in Well	Packers
Size			Kind of Packer
16	20'	20'	
13			
10	226'	-	Size of
8 1/4	1089'	-	
6 5/8			Depth set
5 3/16			
3			Perf. top
2" tubing		1978'	Perf. bottom
Liners Used			Perf. top
			Perf. bottom

CASING CEMENTED 4 1/2" SIZE 2054 No. Ft. 3-23-62 Date
75 cement Halliburton

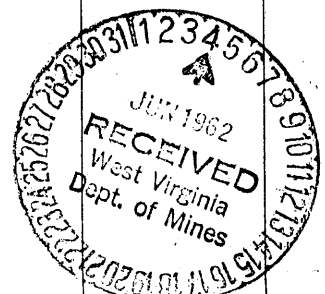
COAL WAS ENCOUNTERED AT _____ FEET _____ INCHES
_____ FEET _____ INCHES _____ FEET _____ INCHES
_____ FEET _____ INCHES _____ FEET _____ INCHES

WELL FRACTURED 30,000# 20-40 sand, 2500# 10-20 sand, 740 bbls. water.

RESULT AFTER TREATMENT Open flow by Hope Natural Gas Co. after frac: 120,000 cu. ft. gas thru
ROCK PRESSURE AFTER TREATMENT 24-hour S.I. 700#. _____ 2".

Fresh Water _____ Feet Salt Water _____ Feet

Formation	Color	Hard or Soft	Top	Bottom	Oil, Gas or Water	Depth	Remarks
Clay	Red	Soft	0	16			
Lime	Grey	Soft	16	25			
Rock	Red	Soft	25	40			
Lime	Grey	Soft	40	45			
Rock	Red	Soft	45	75			
Lime	Grey	Soft	75	80			
Sand	White	Soft	80	90			
Slate	Blue	Soft	90	115			
Rock	Red	Soft	115	125			
Slate	Blue	Soft	125	135			
Lime	Grey	Soft	135	155			
Rock	Red	Soft	155	175			
Lime	Grey	Soft	175	180			
Slate	Blue	Soft	180	230			
Rock	Red	Soft	230	265			
Gritty Lime	Grey	Soft	265	325			
Slate	Grey	Soft	325	339			
Lime	Grey	Soft	339	350			
Rock	Red	Soft	350	360			
Lime	Grey	Soft	360	380			
Slate	Blue-Grey	Soft	380	435			
Lime	Grey	Soft	435	448			
Slate, Lime, Shells	Blue & Grey	Soft	448	495			
Sand	Grey-White	Soft	495	536			
Rock	Red	Soft	536	565			
Slate	Blue	Soft	565	575			
Rock	Red	Soft	575	613			
Slate	Blue-Grey	Soft	613	620			
Rock	Red	Soft	620	730			
Lime	Grey	Soft	730	740			



Formation	Color	Hard or Soft	Top ^b	Bottom	Oil, Gas or Water	Depth Found	Remarks
Slate	Blue-Grey	Soft	740	795			
Rock	Red	Soft	795	820			
Lime	Grey	Soft	820	827			
Rock	Red	Soft	827	845			
Slate	Blue-Grey	Soft	845	923			
Lime	Grey	Soft	923	950			
Slate	Blue-Grey	Soft	950	980			
Lime	Grey	Soft	980	1025			
Slate	Blue-Grey	Soft	1025	1045			
Lime	Grey	Soft	1045	1050			
Sand	Brown-White	Soft	1050	1120			
Slate	Blue-Grey	Soft	1120	1150			
Lime	Grey	Soft	1150	1155			
Sand	Brown-White	Soft	1155	1190			
Slate	Black	Soft	1190	1200			
Lime	Grey	Soft	1200	1220			
Lime, Slate, Shells	Blue-Grey	Soft	1220	1298			
Lime	Grey	Soft	1298	1325			
Slate	Black	Soft	1325	1336			
Sand & Shells	Grey-White	Soft	1336	1365			
Slate	Black	Soft	1365	1395			
Salt Sand	White	Soft	1395	1659			
Lime	Grey	Soft	1659	1670	Water	1670	4½ bailers/hr.
Rock	Red	Soft	1670	1690			
Slate	Black	Soft	1690	1754			
Rock	Red	Soft	1754	1774			
Slate	Grey	Soft	1774	1815			
Lime	Grey	Soft	1815	1847			
Sand	Brown-White	Soft	1847	1855			
Slate	Grey	Soft	1855	1863			
Big Lime	Grey	Soft	1863	1910			
Big Injun	Brown-White	Soft	1910	2005	Oil	1997	Show
Slate	Grey	Soft	2005	2054 TD			

Date June 1, 1962

APPROVED McALESTER FUEL COMPANY, Owner

By [Signature] Gen. Prod. Sup't.
(Title)