

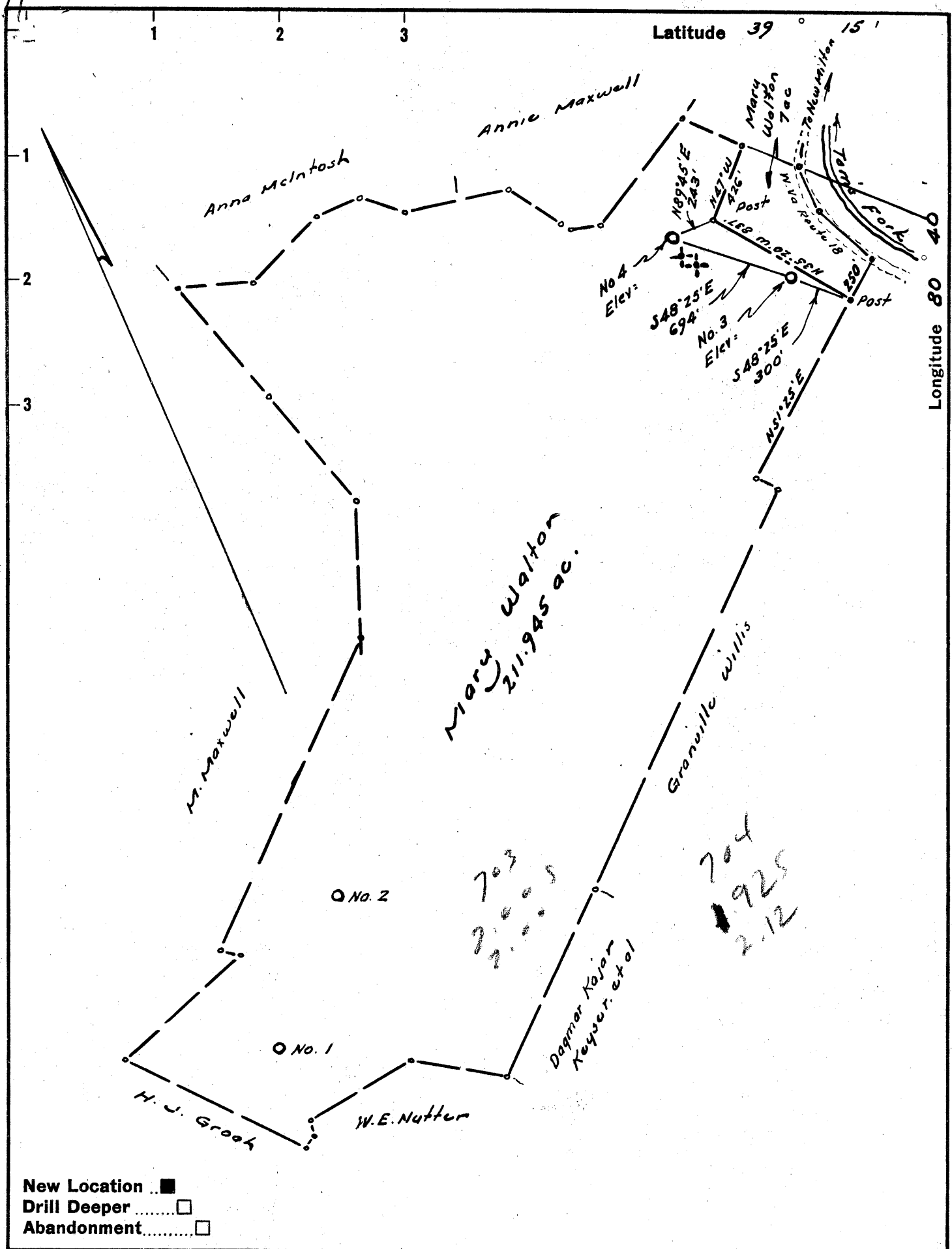
**CORRECTION -- ELEVATIONS**

Company FERRELL L. PRIOR  
 Address 700 Union Trust Bldg. Parkersburg, West Va.  
 Farm Mary Walton  
 Tract \_\_\_\_\_ Acres 211.945 Lease No. \_\_\_\_\_  
 Well (Farm) No. Three - Four Serial No. \_\_\_\_\_  
 Elevation (Spirit Level) No. 3 - 1032'  
211.945 - 1026'  
 Quadrangle Kodis NW  
 County Doddridge District New Milton  
 Engineer W. H. [Signature]  
 Engineer's Registration No. 1227  
 File No. \_\_\_\_\_ Drawing No. \_\_\_\_\_  
 Date January 1, 1968 Scale 1" = 400' = 660'

STATE OF WEST VIRGINIA  
 DEPARTMENT OF MINES  
 OIL AND GAS DIVISION  
 CHARLESTON

**WELL LOCATION MAP**  
 FILE NO. Doc-703-#9-P  
Doc-704-#4-P

+ Denotes location of well on United States Topographic Maps, scale 1 to 62,500, latitude and longitude lines being represented by border lines as shown.  
 - Denotes one inch spaces on border line of original tracing.



New Location ..    
 Drill Deeper .....    
 Abandonment.....

Company FERRELL L. PRIOR  
 Address 700 Union Trust Bldg, Parkersburg, West Va.  
 Farm Mary Walton  
 Tract \_\_\_\_\_ Acres 211.945 Lease No. \_\_\_\_\_  
 Well (Farm) No. Three - Four Serial No. \_\_\_\_\_  
 Elevation (Spirit Level) \_\_\_\_\_  
 Quadrangle Vadis NW  
 County Doddridge District New Milton  
 Engineer W. H. Street Jr.  
 Engineer's Registration No. 1227  
 File No. \_\_\_\_\_ Drawing No. \_\_\_\_\_  
 Date January 1967 Scale 1" = 400' = 660'

STATE OF WEST VIRGINIA  
 DEPARTMENT OF MINES  
 OIL AND GAS DIVISION  
 CHARLESTON

**WELL LOCATION MAP**  
 FILE NO. Dod - 703 - # 3  
Dod - 704 - # 4

+ Denotes location of well on United States Topographic Maps, scale 1 to 62,500, latitude and longitude lines being represented by border lines as shown.

- Denotes one inch spaces on border line of original tracing.

5-6 144



STATE OF WEST VIRGINIA  
DEPARTMENT OF MINES  
OIL AND GAS DIVISION 13

Quadrangle Vadis

Permit No. DOD - 703

**WELL RECORD**

Oil or Gas Well Oil  
(KIND)

Company Ferrell L. Prior  
Address 720 Union Trust Bldg., Parkersburg, W. Va.  
Farm Mary Walton Acres 211.945  
Location (waters) Tom's Fork  
Well No. Three Elev. 1032'  
District New Milton County Doddridge  
The surface of tract is owned in fee by Mary Walton  
New Milton, W. Va. Address W. Va.  
Mineral rights are owned by Mary Walton  
New Milton, W. Va. Address W. Va.  
Drilling commenced February 1, 1962  
Drilling completed February 10, 1962  
Date Shot \_\_\_\_\_ From \_\_\_\_\_ To \_\_\_\_\_  
With \_\_\_\_\_  
Open Flow \_\_\_\_\_ /10ths Water in \_\_\_\_\_ Inch  
\_\_\_\_\_ /10ths Merc. in \_\_\_\_\_ Inch  
Volume Not taken \_\_\_\_\_ Cu. Ft.  
Rock Pressure Not taken lbs. \_\_\_\_\_ hrs.  
Oil Show \_\_\_\_\_ bbls., 1st 24 hrs.  
WELL ACIDIZED 200 gal. MCA

Casing and Tubing	Used in Drilling	Left in Well	Packers
Size			Kind of Packer
16			
13			
10			Size of
8 1/2	42'	42'	
6 1/2			Depth set
5 3/16			
4 1/2	2148'	2148'	Perf. top 2086'
2			Perf. bottom 2088'
Liners Used			Perf. top
			Perf. bottom

CASING CEMENTED 4 1/2 SIZE 2148 No. Ft. 2/9/62 Date  
60 sks. cement LAWSON

COAL WAS ENCOUNTERED AT None FEET \_\_\_\_\_ INCHES  
\_\_\_\_\_ FEET \_\_\_\_\_ INCHES FEET \_\_\_\_\_ INCHES  
\_\_\_\_\_ FEET \_\_\_\_\_ INCHES FEET \_\_\_\_\_ INCHES

WELL FRACTURED 24,000 lbs. sand 397 bbls. water

Well drilled with Rotary Circulating Gel

RESULT AFTER TREATMENT 50 bbls. oil per day 24hours

ROCK PRESSURE AFTER TREATMENT 620 lbs.

Fresh Water \_\_\_\_\_ Feet \_\_\_\_\_ Salt Water \_\_\_\_\_ Feet \_\_\_\_\_

Formation	Color	Hard or Soft	Top	Bottom	Oil, Gas or Water	Depth	Remarks
Soil			0 <sup>2</sup>	14			
Red rock			14	29			
Sand rock			29	45			
Red rock			45	59			
Red rock			59	73			
Shale			73	90			
White sand			90	101			
Shale			101	120			
Lime			120	126			
Shale			126	187			
Red rock			187	203			
Shale			203	217			
Red rock			217	270			
Sand			270	287			
Shale			287	301			
Red rock			301	311			
Lime			311	319			
Red rock			319	347			
Lime			347	352			
Shale			352	396			
Shale & lime			396	413			
Red rock			413	439			
Shale & lime			439	442			
Lime			442	451			
Shale lime & shells			451	457			
Red rock			457	476			
Lime			476	489			
Hard Sand			489	527			



Formation	Color	Hard or Soft	Top <sup>13</sup>	Bottom	Oil, Gas or Water	Depth Found	Remarks
Hard sand			527	537			
Sand			537	645			
Sandy shale & lime			645	662			
Shale			662	672			
Lime			672	687			
Sand, shale & lime			687	695			
Shale			695	709			
Shale lime & shells			709	795			
Red rock			795	828			
Shale			828	852			
Red rock			852	912			
Sand, slate			912	926			
Slate & lime shells			926	1066			
Red rock & shale			1066	1089			
Broken sand			1089	1096			
Red rock			1096	1121			
Shale			1121	1162			
Shale-lime & shells			1162	1177			
Shale			1177	1201			
Shale & lime shells			1201	1213'			
Sand			1213	1239			
Gritty lime			1239	1272			
Shale			1272	1301			
Sand			1301	1340			
Sandy lime			1340	1363			
Sand			1363	1401			
Sand & shale			1401	1411			
Sand			1411	1562			
Sand & shale			1562	1675			
Sand			1675	1703			
Sand & shale			1703	1740			
Lime & shale			1740	1810			
Sandy shale			1810	1860			
Lime & shale			1860	1930			
Sand			1930	2010			
Sand			2010	2050			
Sand			2050	2062	Oil & gas		
Shale			2062	2092	Oil & gas		
			2092	2121			
			2121	T. D.			

Date April 2, 19 62  
 APPROVED Hessell & Prior Owner  
 By \_\_\_\_\_  
 (Title)