

~~New Location~~
 Drill Deeper
 Abandonment

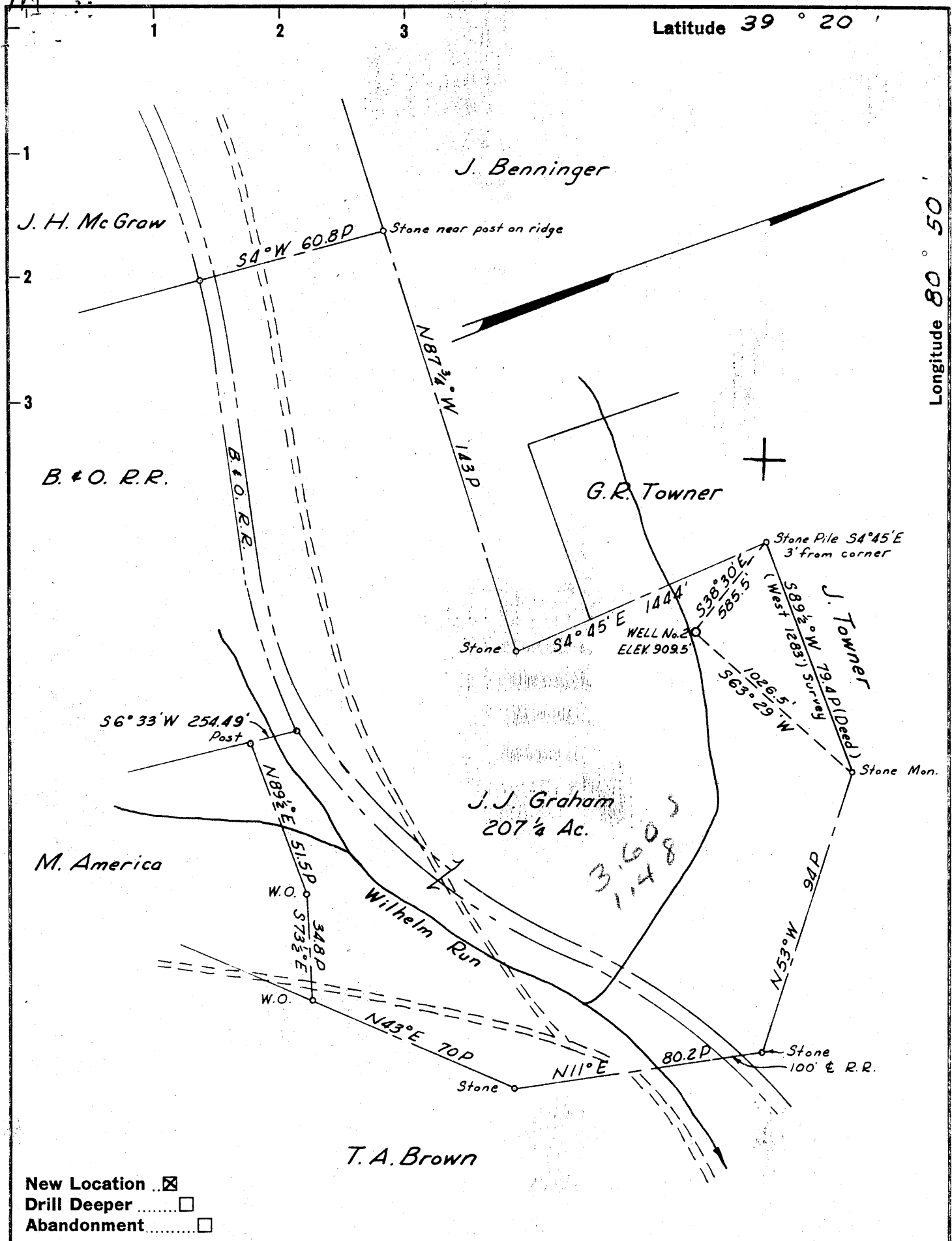
Company Stonestreet Lands Co.
~~BEAUTIFUL DREAMER Oil Co.~~
 Address Box 26, S. Main, W.Va. Spencer, W.V., 25276
 Farm J.J. GRAHAM
 Tract _____ Acres 207 1/4 Lease No. _____
 Well (Farm) No. TWO Serial No. _____
 Elevation (Spirit Level) 909.5'
 Quadrangle WEST UNION SC
 County DODDRIDGE District CENTRAL
 Engineer Wm H. Wickmatt
 Engineer's Registration No. 3935
 File No. _____ Drawing No. _____
 Date Dec 15, 1961 Scale 1" = 40 Poles

STATE OF WEST VIRGINIA
 DEPARTMENT OF MINES
 OIL AND GAS DIVISION
 CHARLESTON

WELL LOCATION MAP
 FILE NO. Dep-689-P

+ Denotes location of well on United States Topographic Maps, scale 1 to 62,500, latitude and longitude lines being represented by border lines as shown.
 - Denotes one inch spaces on border line of original tracing.

JUN 10 1974



New Location
 Drill Deeper
 Abandonment

Company BEAUTIFUL DREAMER OIL Co.
 Address 1/2 LEONARD HART, TRUSTEE
Box 26, ST. MARYS, W.VA.
 Farm J. J. GRAHAM
 Tract _____ Acres 207 1/4 Lease No. _____
 Well (Farm) No. TWO Serial No. _____
 Elevation (Spirit Level) 909.5'
 Quadrangle WEST UNION - 5C
 County DODDRIDGE District CENTRAL
 Engineer Wm. W. Wilmett
 Engineer's Registration No. 3935
 File No. _____ Drawing No. _____
 Date Dec 15, 1961 Scale 1" = 40 Poles

STATE OF WEST VIRGINIA
 DEPARTMENT OF MINES
 OIL AND GAS DIVISION
 CHARLESTON

WELL LOCATION MAP
 FILE NO. DOD-689

+ Denotes location of well on United States Topographic Maps, scale 1 to 62,500, latitude and longitude lines being represented by border lines as shown.
 - Denotes one inch spaces on border line of original tracing.

6-6-1961



STATE OF WEST VIRGINIA
DEPARTMENT OF MINES
OIL AND GAS DIVISION

Quadrangle West Union

Permit No. DOD-689

WELL RECORD

Oil or Gas Well Gas
Oil
(KIND)

Company Dreamer Oil Company, Leonard Hart, Trustee
Address 702 Second St., St. Marys, W. Va.
Farm J. J. Graham Acres 207 1/4
Location (waters) Wilhelm Run
Well No. 2 Elev. 909.5'
District Central County Doddridge
The surface of tract is owned in fee by J. J. Graham
Address West Union, W. Va.
Mineral rights are owned by J. J. Graham
Address West Union, W. Va.

Drilling commenced January 12, 1962
Drilling completed February 23, 1962
Date Shot _____ From _____ To _____
With _____
Open Flow /10ths Water in _____ Inch
/10ths Merc. in _____ Inch

Volume _____ Cu. Ft.
Rock Pressure 300# lbs. 24 hrs.
Oil _____ bbls., 1st 24 hrs.
WELL ACIDIZED _____

Casing and Tubing	Used in Drilling	Left in Well	Packers
Size			Kind of Packer
16			
13			
10			Size of
8 1/4			
6 5/8			Depth set
5 3/16 <u>5 1/2 Smls.</u>		<u>2,007</u>	
3			Perf. top
2			Perf. bottom
Liners Used			Perf. top
			Perf. bottom

CASING CEMENTED 5 1/2" SIZE 2007 No. Ft. 2/28/62 Date
Cemented bottom 400 ft. - Aquagel ahead of
cement. 60 cement & 6 sks. aquagel, Halliburton
COAL WAS ENCOUNTERED AT None FEET INCHES
_____ FEET _____ INCHES _____ FEET _____ INCHES
_____ FEET _____ INCHES _____ FEET _____ INCHES

WELL FRACTURED 3/12/62 with 500 gal acid, 900 bbls. water, 37,000# sand.

RESULT AFTER TREATMENT 15 bbls. oil daily, 176,000 cu ft gas (Open flow test)

ROCK PRESSURE AFTER TREATMENT 350#

Fresh Water _____ Feet _____ Salt Water _____ Feet _____

Formation	Color	Hard or Soft	Top	Bottom	Oil, Gas or Water	Depth	Remarks
Shale			0	243			
Lime			243	264			
Shale			264	445			
Sand			445	480			
Shale			480	602			
Lime		Hard	602	606			
Shale			606	724			
Red Rock			724	750			
Lime			750	800			
Red Rock			800	815			
Lime			815	880			
Sand			880	883			
Lime			883	930			
Red Rock			930	955			
Shale			955	1048			
Sand			1048	1095			
Shale			1095	1113			
Sand			1113	1130			
Shale			1130	1320			
Lime			1320	1396			
Sand			1396	1462			
Sandy Lime			1462	1586		Water 1415 to 1420	
Shale			1586	1807			
Lime (Greenbrier)			1807	1936			
Sand (Big Injun)			1936	1984			
Shale			1984	2008	Oil & Gas		
TD				2008			

