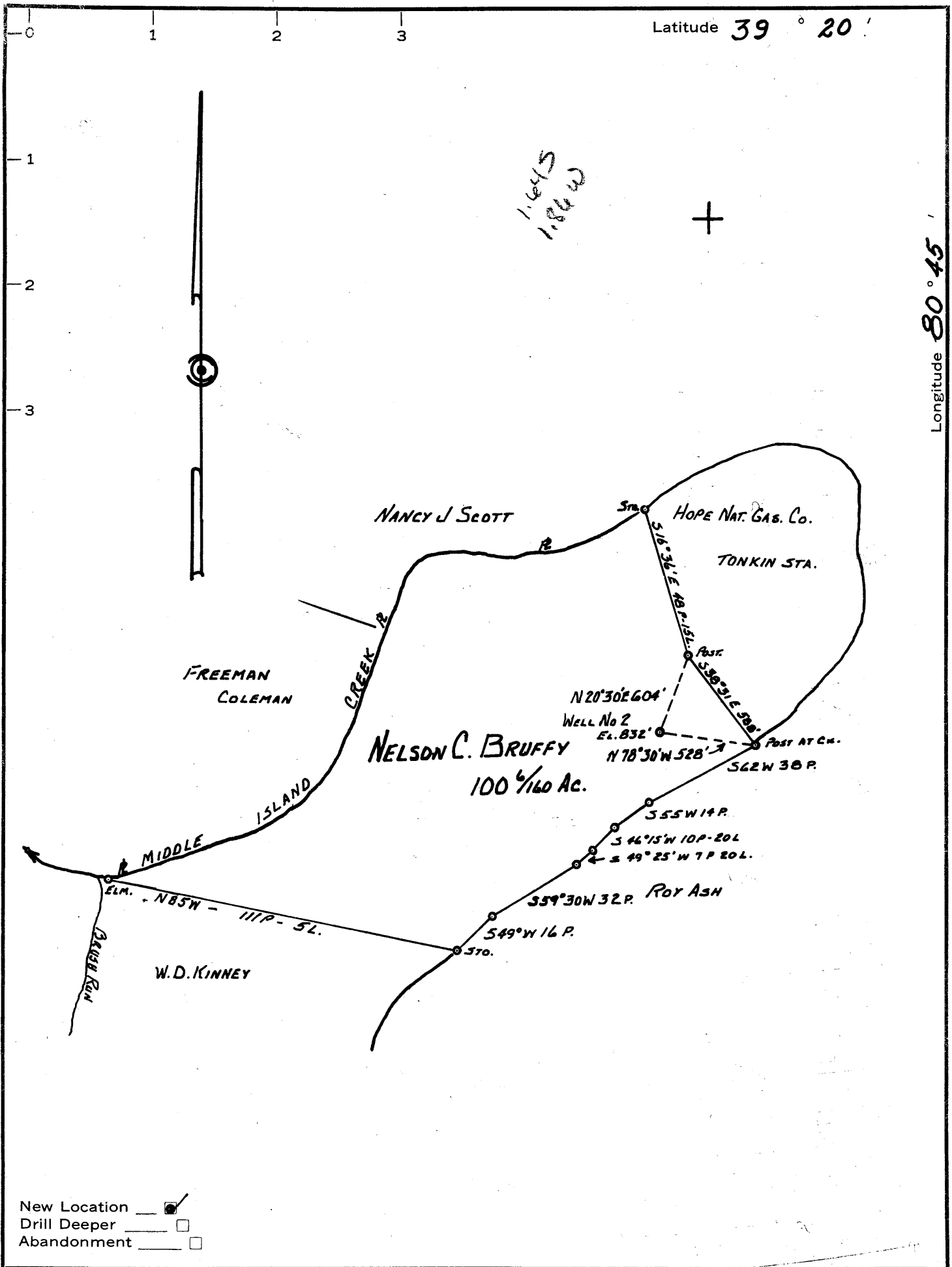


Latitude 39 ° 20 '

Longitude 80 ° 45 '



1.6415  
1.864 W

New Location   
 Drill Deeper   
 Abandonment

Company FORD & BRUFFY Co.  
 Address % W.A. FORD, WEST UNION, W. Va.  
 Farm NELSON C. BRUFFY  
 Tract \_\_\_\_\_ Acres 100 1/160 Lease No. \_\_\_\_\_  
 Well (Farm) No. 2 Serial No. \_\_\_\_\_  
 Elevation (Spirit Level) 832'  
 Quadrangle WEST UNION SE  
 County DODDRIDGE District WEST UNION  
 Engineer John W. Hamilton  
 Engineer's Registration No. 2274  
 File No. \_\_\_\_\_ Drawing No. \_\_\_\_\_  
 Date Nov. 15, 1961 Scale 1" = 40 POLES.

STATE OF WEST VIRGINIA  
 DEPARTMENT OF MINES  
 OIL AND GAS DIVISION  
 CHARLESTON

WELL LOCATION MAP  
 FILE NO. Dod-671

+ Denotes location of well on United States Topographic Maps, scale 1 to 62,500, latitude and longitude lines being represented by border lines as shown.

— Denotes one inch spaces on border line of original tracing.