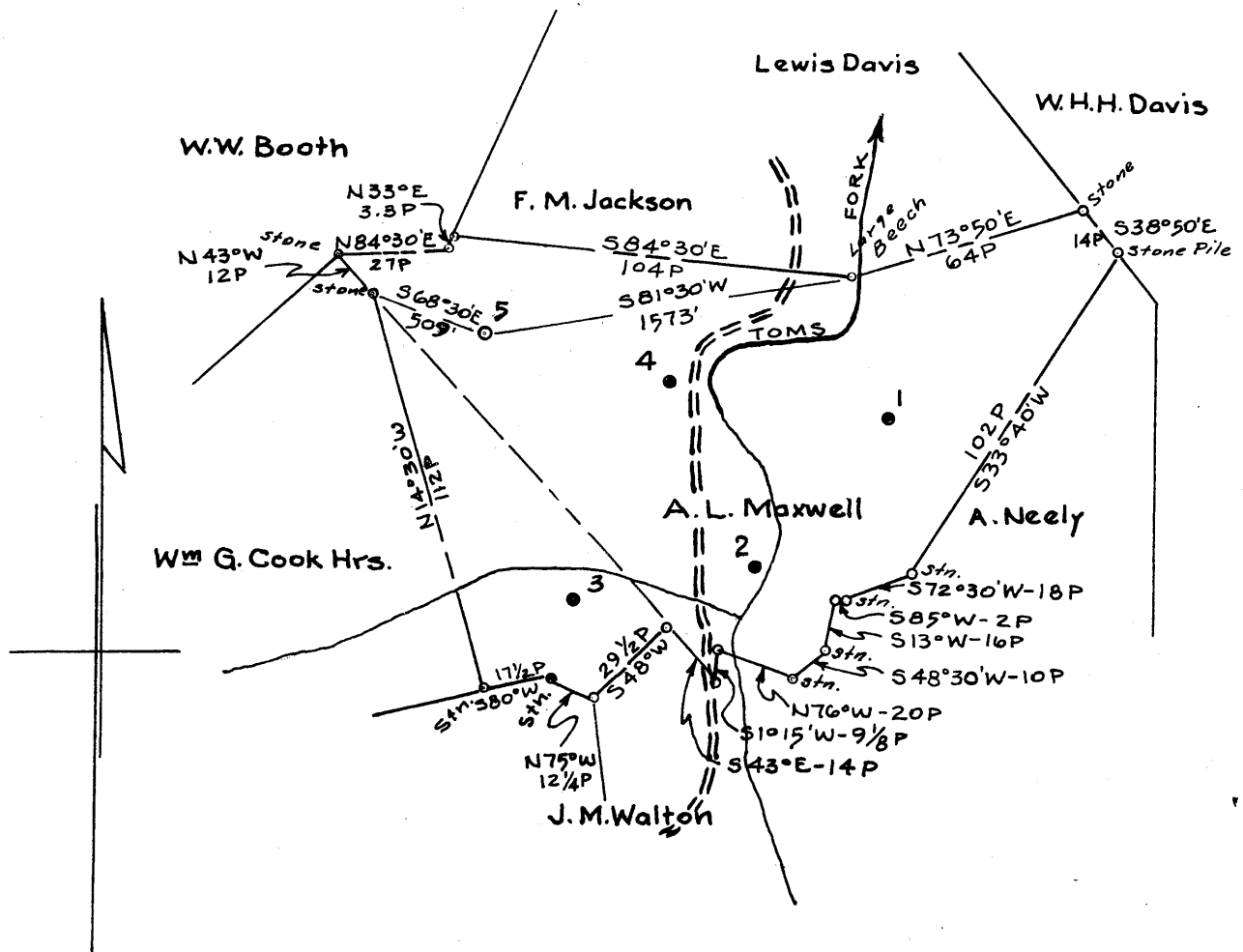


Latitude 39° 15'

Longitude 80° 40'

+ topo



Surface: J. M. Walton, New Milton, W. Va.

Coal: Virginia A. Tetrick  
P.O. Box 267  
Clarksburg, W. Va.

1.535  
1.90

New Location   
 Drill Deeper   
 Abandonment

Map N17 S16 W5

Company SOUTH PENN OIL CO.  
 Address PARKERSBURG, W.Va.  
 Farm A.L. MAXWELL  
 Tract \_\_\_\_\_ Acres 95 Lease No. 80783  
 Well (Farm) No. 5 Serial No. \_\_\_\_\_  
 Elevation (Spirit Level) 1130.56' ground  
 Quadrangle VADIS NW  
 County DODDRIDGE District NEWMILTON  
 Engineer A.C. Hillert  
 Engineer's Registration No. 2534  
 File No. 1345 Drawing No. \_\_\_\_\_  
 Date Nov. 6, 1961 Scale 1" = 800'

STATE OF WEST VIRGINIA  
 DEPARTMENT OF MINES  
 OIL AND GAS DIVISION  
 CHARLESTON

### WELL LOCATION MAP

FILE NO. 200-660

+ Denotes location of well on United States Topographic Maps, scale 1 to 62,500, latitude and longitude lines being represented by border lines as shown.

- Denotes one inch spaces on border line of original tracing.



STATE OF WEST VIRGINIA  
DEPARTMENT OF MINES  
OIL AND GAS DIVISION 16

Quadrangle VADIS

Permit No. DOD-660

**WELL RECORD**

Oil or Gas Well OG  
(KIND)

Company SOUTH PENN OIL COMPANY  
Address P. O. Box 1280, Parkersburg, W. Va.  
Farm A. L. Maxwell Acres 95  
Location (waters) Toms Fork  
Well No. 5 Elev. 1130.56  
District New Milton County Doddridge  
The surface of tract is owned in fee by J. M. Walton  
Address New Milton, W. Va.  
Mineral rights are owned by Russell C. Enlow, et al.  
Address P. O. Box 1409, Dalhart, Texas  
Drilling commenced November 13, 1961  
Drilling completed December 12, 1961  
Date Shot From To  
With  
Open Flow /10ths Water in Inch  
/10ths Merc. in Inch  
Volume 35,000 Cu. Ft.  
Rock Pressure lbs. hrs.  
Oil 4 bbls., 1st 24 hrs.  
WELL ACIDIZED

Casing and Tubing	Used in Drilling	Left in Well	Packers
Size			Kind of Packer
16			
13			
10	489'	NONE	Size of
8 5/8"	1229	NONE	
8 7/8"	2102'	2102'	Depth set
5 3/16			
3			Perf. top
2			Perf. bottom
Liners Used			Perf. top
			Perf. bottom

CASING CEMENTED 7" SIZE 200 No. Ft. 12/3/61 Date

COAL WAS ENCOUNTERED AT 172 FEET 24 INCHES  
FEET INCHES FEET INCHES  
FEET INCHES FEET INCHES

WELL FRACTURED 12/18/61 by The Western Company

RESULT AFTER TREATMENT

Gas = 50 MCF (Est.)  
Oil = 20 Bbls. day

ROCK PRESSURE AFTER TREATMENT

450 Lbs.

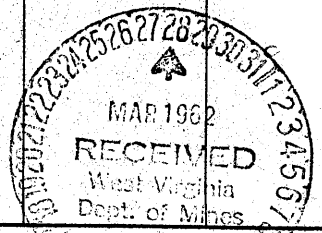
Fresh Water

Feet

Salt Water

Feet

Formation	Color	Hard or Soft	Top	Bottom	Oil, Gas or Water	Depth	Remarks
Clay			0	20			
Red Rock			20	50			
Slate			50	70			
Slate & Lime			70	84			
Red Rock			84	100			
Slate			100	108			
Red Rock			108	115			
Slate			115	172			
Coal			172	174			
Slate			174	222			
Red Rock			222	285			
Lime			285	300			
Slate			300	327	Water	300	Hole Full
Sand & Slate			327	340			
Red Rock			340	355			
Slate			355	375			
Sand			375	385			
Slate			385	439			
Red Rock			439	455			
Slate			455	500			
Red Rock			500	552			
Slate & Shells			552	605			
Red Rock			605	615			
Slate			615	675			
Lime			675	690			
Slate			690	765			
Lime			765	787			
Red Rock			787	825			



Formation	Color	Hard or Soft	Top 16	Bottom	Oil, Gas or Water	Depth Found	Remarks
Sand			825	835			
Slate			835	852			
Red Rock			852	869			
Sand			869	885			
Slate			885	895			
Red Rock			895	915			
Slate & Shells			915	945			
Red Rock			945	955			
Slate			955	1040			
Sand			1040	1075			
Slate			1075	1135			
Lime			1135	1150			
Slate			1150	1218			
Lime			1218	1229			
Ltl. Dunkard			1229	1276			
Slate & Lime			1276	1310	Water	1276	2 Bailers/Hr.
Big Dunkard			1310	1380			
Dark Slate			1380	1390			
Lime & Shells			1390	1420			
Dark Slate			1420	1490			
Lime			1490	1520			
1st. Salt Sand			1520	1590			
Dark Slate			1590	1630			
Lime & Shells			1630	1654			
2nd. Salt Sand			1654	1710			
Slate			1710	1743			
Sand			1743	1764			
Slate & Lime Shells			1764	1784			
Sand			1784	1840			
Slate & Lime			1840	2020			
Lime			2020	2035			
Blue Monday			2035	2070			
Big Lime			2070	2120			
Big Injun			2120	2200			
Gas					Gas & Show of Oil	2123-2128	3"W3/8" Disc.
					Gas Bottom Pay	2175-2180	3"W1" Disc.
Soft Sand			2180	2200			
Slate			2200	2215			
TOTAL DEPTH				2215			