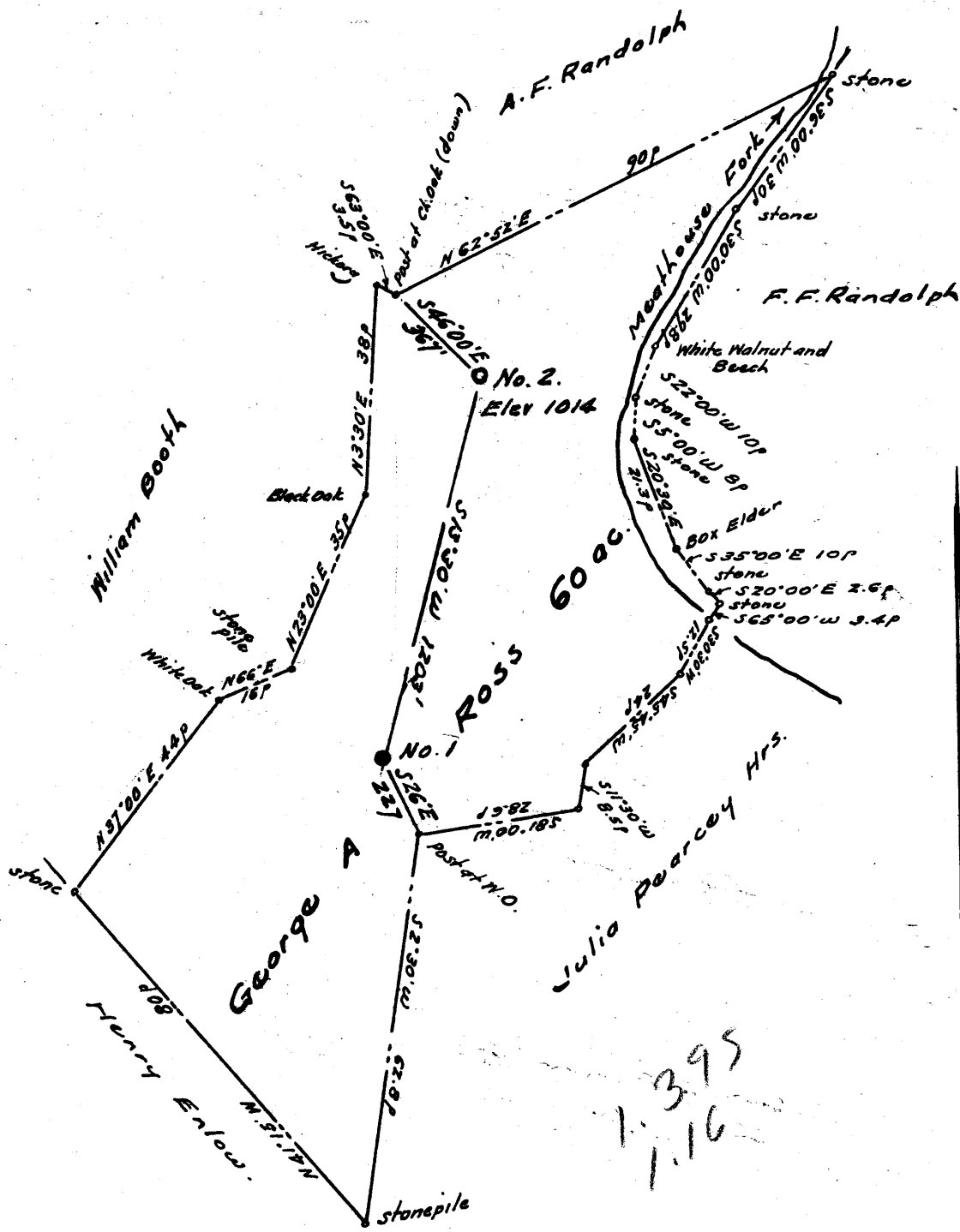


Latitude 39° 15'

Longitude 80° 40'



- New Location
- Drill Deeper
- Abandonment

Company P. & M. OIL CO.
 Address 1/2 Luther Piggott, West Union, W. Va.
 Farm George A. Ross
 Tract _____ Acres 59.154 Lease No. _____
 Well (Farm) No. Two Serial No. _____
 Elevation (Spirit Level) 1014'
 Quadrangle Vadie NW
 County Doddridge District New Milton
 Engineer W. H. [Signature]
 Engineer's Registration No. 1227
 File No. _____ Drawing No. _____
 Date Sept 1961 Scale 1" = 30p.

STATE OF WEST VIRGINIA
 DEPARTMENT OF MINES
 OIL AND GAS DIVISION
 CHARLESTON

WELL LOCATION MAP

FILE NO. Dod-644-Well #2

+ Denotes location of well on United States Topographic Maps, scale 1 to 62,500, latitude and longitude lines being represented by border lines as shown.

- Denotes one inch spaces on border line of original tracing.

6-144



STATE OF WEST VIRGINIA
DEPARTMENT OF MINES
OIL AND GAS DIVISION 6

Quadrangle Vadis

Permit No. DOD-644

WELL RECORD

Oil or Gas Well Oil

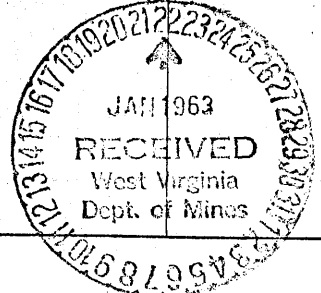
Company P & M Oil Co.
Address West Union, W. Va.
Farm G. A. Ross Acres 59.154
Location (waters) Meathouse Fork
Well No. 2 Elev. 1014
District New Milton County Doddridge
The surface of tract is owned in fee by Clarence Ross
Address Blandville, W. Va
Mineral rights are owned by Ross & Others
Address _____
Drilling commenced October 14, 1961
Drilling completed December 24, 1962
Date Shot _____ From _____ To _____
With _____
Open Flow _____ /10ths Water in _____ Inch
_____ /10ths Merc. in _____ Inch
Volume _____ Cu. Ft.
Rock Pressure _____ lbs. _____ hrs.
Oil _____ bbls., 1st 24 hrs.
WELL ACIDIZED _____
WELL FRACTURED _____

Casing and Tubing	Used in Drilling	Left in Well	Packers
Size			Kind of Packer
16			
13	22		
10	302		Size of
8 1/4	1120		
6 1/4			Depth set
5 3/16	2028		
3			Perf. top
2			Perf. bottom
Liners Used			Perf. top
			Perf. bottom

CASING CEMENTED 5 1/2 SIZE 130 No. Ft. 1-8-63 Date
22 sks. H.E. cement-5 baroid gel-Lawson
COAL WAS ENCOUNTERED AT 140 FEET 12" INCHES
693 FEET 12" INCHES FEET INCHES
FEET INCHES FEET INCHES

RESULT AFTER TREATMENT OIL VOLUME ??
ROCK PRESSURE AFTER TREATMENT _____
Fresh Water 693 (Small Amt) Salt Water 1267 (Small Amt)

Formation	Color	Hard or Soft	Top	Bottom	Oil, Gas or Water	Depth	Remarks
Red Rock & shells			0	140			
N. Coal			140	141			
Red & Blue rock			141	693			
P. Coal			693	694			
Blue lime			694	760			
Blue Mud			760	800			
Slate & shells			800	805			
Red Rock			805	820			
Hard lime			820	840			
Grey mud			840	853			
R. R.			853	890			
Grey Mud			890	900			
R. R.			900	910			
Grey mud			910	940			
Pink Rock			940	970			
Grey mud			970	1005			
Hard lime			1005	1014			
Grey mud			1014	1020			
Hard lime			1020	1025			
Grey mud			1025	1032			
R. R.			1032	1055			
Grey mud			1055	1068			
R. R.			1068	1075			
Grey mud			1075	1097			
R. R.			1097	1102			
Blue mud			1102	1110			
Pink rock			1110	1118			
Hard shell			1118	1121			
Blue lime			1121	1132			
R. R.			1132	1144			



Formation	Color	Hard or Soft	Top 6	Bottom	Oil, Gas or Water	Depth Found	Remarks
Lime			1144	1155			
S. & S.			1155	1227			
Gritty lime			1227	1255			
Slate			1255	1270			
Soft lime			1270	1275			
Soft lime			1275	1322			
Slate			1322	1330			
Hard shells			1330	1340			
Black slate			1340	1355			
Broken lime			1355	1420			
Blue mud			1420	1425			
Broken lime			1425	1450			
1st. Salt sand			1450	1478			
Slate			1478	1488			
Lime			1488	1508			
2nd. Salt sand			1508	1590			
S. & S.			1590	1598			
Hard lime			1598	1618			
3rd Salt sand			1618	1655			
Black slate			1655	1725			
Hard sand			1725	1750			
Black slate			1750	1795			
Hard sand			1795	1810			
Black slate			1810	1820			
Hard shells			1820	1828			
Hard lime			1828	1850			
Limey sand			1850	1858			
Broken lime			1858	1910			
Black slate			1910	1965			
Little lime			1965	2015			
Blue Monday sand			2015	2038			
Big Lime			2038	2090			
Big Injun sand			2090	2172			
		Oil & Gas	2125 2130				
Slate			2172	2173			
Total Depth			2173				

Date January 21, 1963, 19

APPROVED P. A. Oil Co., Owner

by L. G. Hirota, Engineer
(R&S)