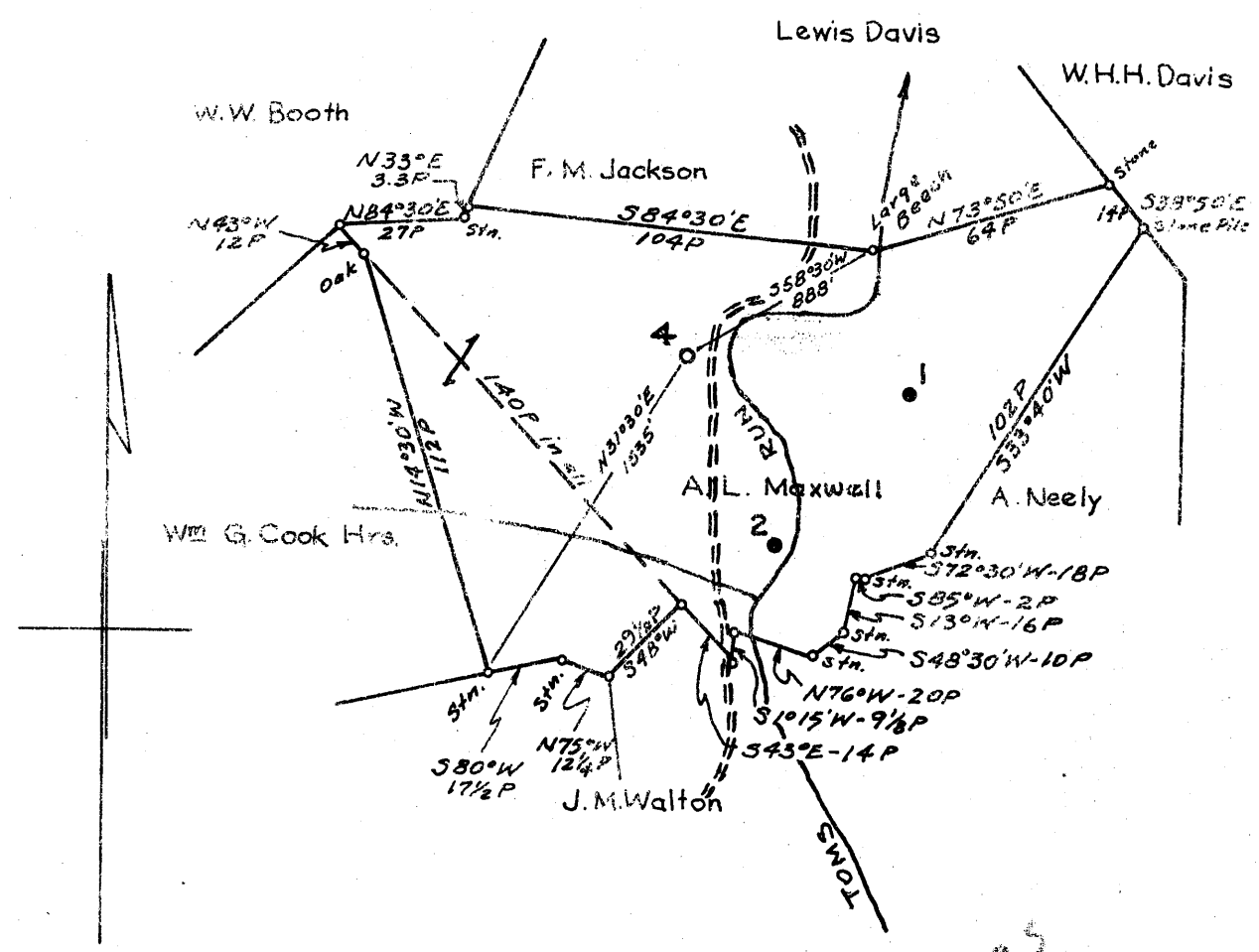


Latitude 39° 15'

Longitude 80° 40'

+ topo



Surface: J. M. Walton, New Milton, W. Va.
 Coal: Virginia A. Tetrick
 P.O. Box 267
 Clarksburg, W. Va.

1.595
1.74

New Location
 Drill Deeper
 Abandonment

Map N17 S16 W5

Company SOUTH PENN OIL CO.
 Address PARKERSBURG, W. Va.
 Farm A.L. MAXWELL
 Tract _____ Acres 95 Lease No. 80783
 Well (Farm) No. 4 Serial No. _____
 Elevation (Spirit Level) 846.20' ground
 Quadrangle VADIS - NW
 County DODDRIDGE District NEW MILTON
 Engineer A.C. Nichol
 Engineer's Registration No. 2534
 File No. 1345 Drawing No. _____
 Date July 28, 1961 Scale 1" = 800'

STATE OF WEST VIRGINIA
 DEPARTMENT OF MINES
 OIL AND GAS DIVISION
 CHARLESTON

WELL LOCATION MAP
 FILE NO. DOD-635

+ Denotes location of well on United States Topographic Maps, scale 1 to 62,500, latitude and longitude lines being represented by border lines as shown.
 - Denotes one inch spaces on border line of original tracing.



STATE OF WEST VIRGINIA
DEPARTMENT OF MINES
OIL AND GAS DIVISION 6

Quadrangle VADIS

Permit No. DOD-635

WELL RECORD

Oil or Gas Well Oil & Gas
(KIND)

Company SOUTH PENN OIL COMPANY
Address P. O. Box 1280, Parkersburg, W. Va.
Farm A. L. Maxwell Acres 95
Location (waters) -
Well No. 4 Elev. 846.20
District New Milton County Doddridge
The surface of tract is owned in fee by J. M. Walton
Address New Milton, W. Va.
Mineral rights are owned by Russell C. Enlow, et al.
P. O. Box 1409 Address Dalhart, Texas
Drilling commenced September 25, 1961
Drilling completed October 21, 1961
Date Shot - From - To -
With -
Open Flow 10/10ths Water in 3/4" Inch
- /10ths Merc. in - Inch
Volume 12,500 Cu. Ft.
Rock Pressure 155 lbs. 22 hrs.
Oil 500' Oil in 7" hole 25518 1st 24 hrs.
WELL ACIDIZED -

Casing and Tubing	Used in Drilling	Left in Well	Packers
Size			
16			Kind of Packer <u>-</u>
13			
10	309'	NONE	Size of <u>-</u>
8 1/2 8"	1065'	NONE	
8 3/8 7"	1876'	1876'	Depth set <u>-</u>
5 3/16			
3			Perf. top <u>-</u>
2			Perf. bottom <u>-</u>
Liners Used			Perf. top <u>-</u>
			Perf. bottom <u>-</u>

CASING CEMENTED 7" SIZE 250 No. Ft. 10/15/61 Date

COAL WAS ENCOUNTERED AT - FEET - INCHES
- FEET - INCHES - FEET - INCHES
- FEET - INCHES - FEET - INCHES

WELL FRACTURED October 26, 1961 by Halliburton Company

RESULT AFTER TREATMENT Gas - 75,000 Cu. Ft.
Oil - 40 Barrels

ROCK PRESSURE AFTER TREATMENT 400 Lbs.

Fresh Water - Feet - Salt Water - Feet

Formation	Color	Hard or Soft	Top	Bottom	Oil, Gas or Water	Depth	Remarks
Clay			0	22			
Red Rock			22	38			
Gray Mud			38	48			
Stone			48	74			
Red Rock			74	98	Water	65	
Sand Stone			98	122			
Slate			122	168	Water	108	
Red Rock			168	185			
Slate			185	197			
Red Rock			197	210			
Slate			210	232			
Red Rock			232	270			
Sand			270	290			
Lime			290	335			
Red Rock			335	360			
Lime			360	370			
Slate			370	427			
Lime Shells			427	442			
Slate & Lime Shells			442	615			
Red Rock			615	665			
Slate Shells			665	837			
Lime			837	905			
Slate			905	980			
Sand			980	1050			
Big Dunkard			1050	1120			
Lime			1120	1160			
Slate Dark			1160	1260			

Formation	Color	Hard or Soft	Top 6	Bottom	Oil, Gas or Water	Depth Found	Remarks
1st. Salt Sand			1260	1325			
Slate Black			1325	1385			
2nd Salt Sand			1385	1573			
Slate & Shells			1573	1780			
Blue Monday			1780	1807			
Big Lime			1807	1859			
Big Injun			1859	1943			
					Show of Gas and Oil	1860-1865	12,500 Cu. Ft.
					Good Pay Oil	1923-1937	1 bbl. Oil per day
Slate			1943	1958			
Total Depth				1958			

Date November 17, 19 61

APPROVED SOUTH PENN OIL COMPANY, Owner

By George W. Wisman
George W. Wisman (Title) Land Agent