

NOTE:

Coal owned by Virginia Tetrick, 271 Clay St., Clarksburg, W. Va.
Marshall Barnett Hrs. 1/4 Harley Barnett, Box 225 Salem,
W. Va. owns in Fee Simple.

- (New Location)
 Drill Deeper
 Abandonment

Issued 9-15-69

Hugh Spencer
 Company KENNETH SUMMERS
 West Union
 Address SALEM, W. VA.
 Farm MARSHALL BARNETT HRS.
 Tract _____ Acres 71.393 Lease No. _____
 Well (Farm) No. 1 Serial No. _____
 Elevation (Spirit Level) 1311'
 Quadrangle VADIS NC
 County DODDRIDGE District GREENBRIER
 Engineer John W. Hamilton
 Engineer's Registration No. 2274
 File No. _____ Drawing No. _____
 Date AUG. 19, 1961 Scale 1" = 20 POLES

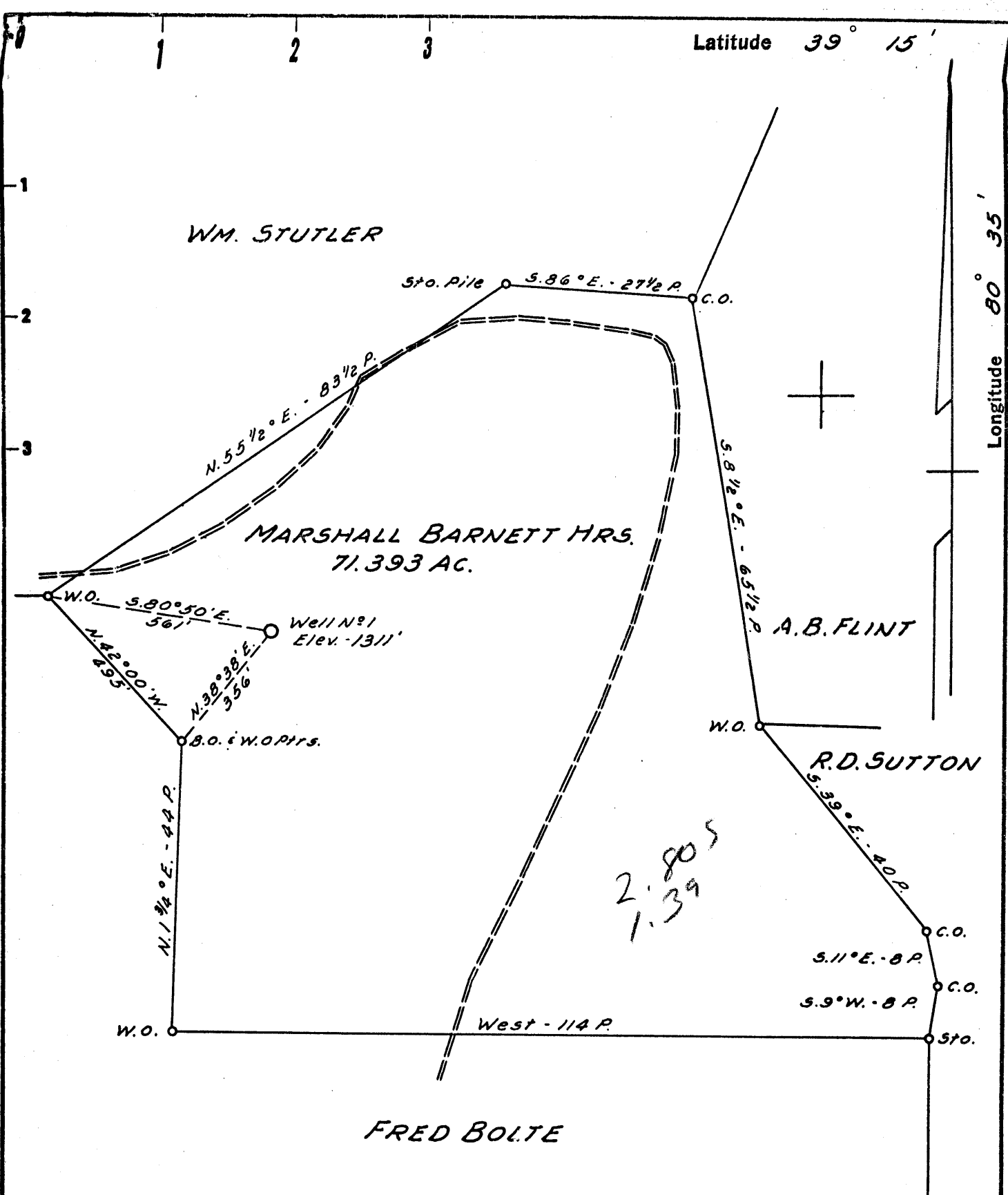
STATE OF WEST VIRGINIA
 DEPARTMENT OF MINES
 OIL AND GAS DIVISION
 CHARLESTON

WELL LOCATION MAP
 FILE NO. Dod-625-P

- + Denotes location of well on United States Topographic Maps, scale 1 to 62,500, latitude and longitude lines being represented by border lines as shown.
 - Denotes one inch spaces on border line of original tracing.

Latitude 39° 15'

Longitude 80° 35'



NOTE:

Coal owned by Virginia Tetrick, 271 Clay St., Clarksburg, W. Va. Marshall Barnett Hrs. % Harley Barnett, Box 225 Salem, W. Va. owns in Fee Simple.

- New Location
- Drill Deeper
- Abandonment

Company KENNETH SUMMERS
 Address SALEM, W. VA.
 Farm MARSHALL BARNETT HRS.
 Tract Acres 71.393 Lease No. _____
 Well (Farm) No. 1 Serial No. _____
 Elevation (Spirit Level) 1311'
 Quadrangle VADIS - NC
 County DODDRIDGE District GREENBRIER
 Engineer John W. Hamilton
 Engineer's Registration No. 2274
 File No. _____ Drawing No. _____
 Date AUG. 19, 1961 Scale 1" = 20 POLES

STATE OF WEST VIRGINIA
DEPARTMENT OF MINES
OIL AND GAS DIVISION
CHARLESTON

WELL LOCATION MAP
FILE NO. Dod - 625

- + Denotes location of well on United States Topographic Maps, scale 1 to 62,500, latitude and longitude lines being represented by border lines as shown.
- Denotes one inch spaces on border line of original tracing.

6-6 46



STATE OF WEST VIRGINIA
DEPARTMENT OF MINES
OIL AND GAS DIVISION 5

Quadrangle Vadis

WELL RECORD

Oil or Gas Well Both

Permit No. DOD-625

Company Kenneth Summers
Address 1309 W.Va. Ave. Clarksburg
Farm Marshall Barnett Hrs. Acres 71.393
Location (waters) Johnsons fork
Well No. #1 Elev. 1311
District Greenbrier County Doddridge
The surface of tract is owned in fee by Barnett Hrs.
Harley Barnett Address Salem, W.Va.
Mineral rights are owned by Barnett Hrs.
Harley Barnett Address Salem, W.Va.
Drilling commenced Nov. 13, 61
Drilling completed Dec 23, 61
Date Shot _____ From _____ To _____
With _____

Casing and Tubing	Used in Drilling	Left in Well	Packers
Size			Kind of Packer
16	8'4"	8'4"	
13	698	698	Size of
10	1314	1314	
8 3/4	1718.5	none	Depth set
6 3/4			
5 3/16	2419	2419	Perf. top
3		2419	Perf. bottom
2			Perf. top
Liners Used			Perf. bottom

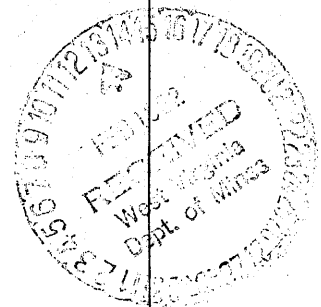
Open Flow /10ths Water in _____ Inch
/10ths Merc. in _____ Inch
Volume _____ Cu. Ft.
Rock Pressure _____ lbs. _____ hrs.
Oil 2-3 Bbls bbls., 1st 24 hrs.
WELL ACIDIZED _____

CASING CEMENTED 5" SIZE 550 No. Ft. 12-30-61 Date
30 sks. cement, 6 aquagel, Garaton Service
COAL WAS ENCOUNTERED AT 615 FEET 36" INCHES
909 FEET 72" INCHES FEET INCHES
FEET INCHES FEET INCHES

WELL FRACTURED 800Bbls. water 22,000lbs sand

RESULT AFTER TREATMENT Estimated 5 Bbls^{0.1} gas not measured gas vol. ??
ROCK PRESSURE AFTER TREATMENT 510lbs - 24 hrs. 2015 10 Gal/hr
Fresh Water 234, 576', Total 1Bbl/hr. Salt Water 1370small amt. 1701 hole full

Formation	Color	Hard or Soft	Top	Bottom	Oil, Gas or Water	Depth	Remarks
Red rock	red	soft	0	8			
Sand rock	brown	"	8	38			
Red rock	red	"	38	50			
Sand	gray	"	50	75			
Red rock	red	"	75	90			
Slate	gray	hard	90	99			
Red rock	red	"	99	142			
Lime	dark	"	142	151	Water 151		
Slate&shells	"	"	151	185			
Red rock	red	soft	185	222			
Lime	dark	hard	222	234	Water 234		
Slate&shells	"	"	234	259			
Sand	light	"	259	290			
Slate	dark	"	290	330			
Sand	white	"	330	340			
Slate	dark	"	340	400			
Sand	white	"	400	420			
Slate&shells	dark	"	420	435			
Sand	"	"	435	448			
Red rocklime	red	soft	448	549			
Slate & lime	dark	hard	549	574			
Sand	white	"	574	581	Water 576	All three 1Bbl/hr	
Slate&shells	White	"	581	615			
Coal	black	soft	615	618			
Slate&shells	White	hard	618	635			
Red rock	red	soft	635	689			
lime&slate	dark	hard	689	720			
Red rock	red	soft	720	739			



Formation	Color	Hard or Soft	Top ^{5'}	Bottom	Oil, Gas or Water	Depth Found	Remarks
Lime	dark	hard	739	772			
Lime&shells	"	"	772	815			
Slate&Shells	"	soft	815	845			
Lime	light	hard	845	860			
Slate	dark	soft	860	890			
Lime&slate	"	hard	890	909			
Coal	-----	-----	909	915			
Slate&shells	dark	soft	915	1005			
Red rock	red	"	1005	1050			
Slate&shells	dark	"	1050	1077			
Red rock	red	"	1077	1120			
Sand	light	hard	1120	1162			
Slate&shells	"	"	1162	1205			
Red rock	red	"	1205	1220			
Slate&shells	dark	"	1220	1242			
Red rock	red	soft	1242	1264			
Lime	dark	hard	1264	1274			
Sand	light	"	1274	1294	Big dunkard		
Slate&shells	dark	"	1294	1359			
Sand	light	"	1359	1413	Small amount of water		
Shale	black	soft	1413	1420			
Slate	dark	"	1420	1432			
Pink rock	pink	"	1432	1440			
Slate&shells	dark	hard	1440	1455			
Lime	light	"	1455	1534			
Sand&slate	light	"	1534	1566			
Slate&shells	dark	"	1566	1572			
lime	gray	"	1572	1605			
Slate&sand	light	"	1605	1631			
Slate	white	soft	1631	1667			
Sand	light	hard	1667	1678			
Slate	dark	"	1678	1678			
Lime	light	"	1678	1684			
Sand	"	"	1684	1702			
Slate	black	"	1702	1708	At 1701 hole full water		
Lime	gray	"	1708	1722			
Slate	white	"	1722	1760			
Shale	black	soft	1760	1764			
Slate&shells	dark	hard	1764	1810			
Lime	gray	"	1810	1817			
Sand	light	"	1817	1830			
Slate	black	"	1880	1927			
Lime	dark	"	1927	1941			
Sand	dark	"	1941	2016	Maxon str y 10gal water/hr.		
Lime	"	"	2016	2022			
Shale	"	"	2022	2157			
Sand	light	"	2157	2170	Maxon sand		
Lime broken	red	"	2170	2224			
Slate	dark	soft	2224	2230			
Little lime	light	hard	2230	2248			
Slate	dark	soft	2248	2252			
Lime&slate	"	hard	2252	2265			
Big lime	"	"	2265	2344			
SandInjun	"	"	2344	2396	Oil 2371-2380 2Bbls/hr show of gas No test		
Lime	"	"	2396	2414			
Slate	light	soft	2414	2419			

Date Feb 7, 1962
APPROVED James H. Summers, Owner
By James H. Summers Agt.
(Title)