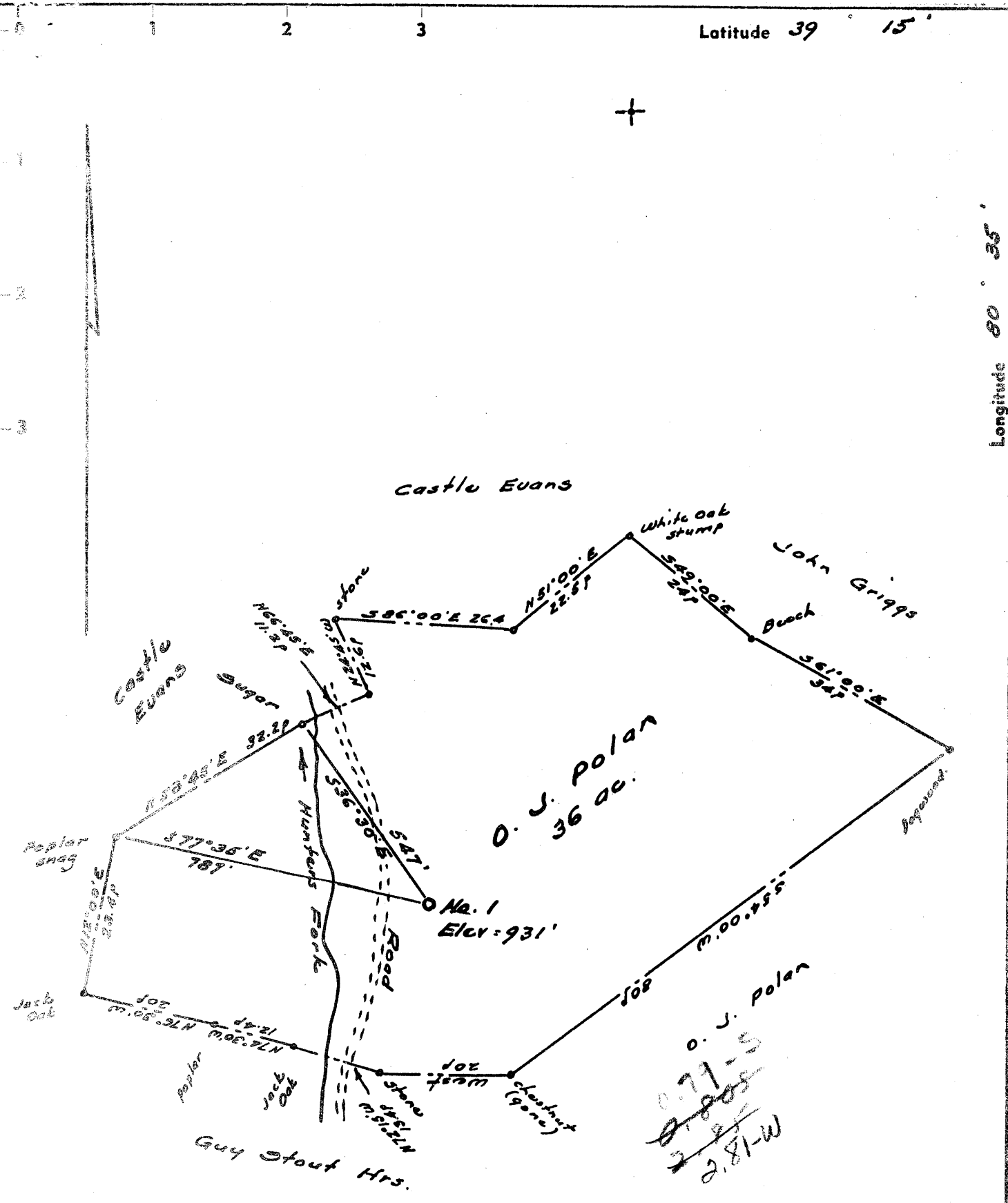


Latitude 39 15'

Longitude 80 35'



- New Location .
- Drill Deeper
- Redrill
- Abandonment

Company J. H. HOLT

Address Ye Walks Hotel, Sistersville, W. Va.

Farm O. J. Polan

Tract _____ Acres 36.0 Lease No. _____

Well (Farm) No. One Serial No. _____

Elevation (Spirit Level) 931'

Quadrangle Vadie - NC

County Doddridge District Greenbrier

Engineer [Signature]

Engineer's Registration No. 1227

File No. _____ Drawing No. _____

Date August 1961 Scale 1" = 200'

STATE OF WEST VIRGINIA
DEPARTMENT OF MINES
OIL AND GAS DIVISION
CHARLESTON

WELL LOCATION MAP

FILE NO. Dod-620

+ Denotes location of well on United States Topographic Maps, scale 1 to 62,500, latitude and longitude lines being represented by border lines as shown.

— Denotes one inch spaces on border line of original tracing.



STATE OF WEST VIRGINIA
DEPARTMENT OF MINES
OIL AND GAS DIVISION Z

Quadrangle Vadis

Permit No. DOD-620

WELL RECORD

Oil or Gas Well Gas
(KIND)

Company J. H. HOLT
Address c/o WELLS HOTEL, SISTERSVILLE, W.VA.
Farm O. J. POLAN Acres 36.0
Location (waters) HUNTERS FORK
Well No. ONE (1) Elev. 931'
District GREENBRIER County DODDRIDGE
The surface of tract is owned in fee by O. J. POLAN,
Rural Route Address SALEM, W. Va.
Mineral rights are owned by SAME
Address _____
Drilling commenced 10/10/61
Drilling completed September 21, 1963
Date Shot From _____ To _____
With _____
Open Flow _____ /10ths Water in _____ Inch
_____ /10ths Merc. in _____ Inch
Volume _____ Cu. Ft.
Rock Pressure _____ lbs. _____ hrs.
Oil _____ bbls., 1st 24 hrs.
WELL ACIDIZED _____
WELL FRACTURED _____

Casing and Tubing	Used in Drilling	Left in Well	Packers
Size			
<u>xxWood Conductor 14'</u>			Kind of Packer _____
13			
<u>10-3/4</u>	<u>416'</u>		Size of _____
8 1/2			
<u>6 1/2</u>			Depth set _____
<u>xxxxx</u>	<u>2718'</u>	<u>2718'</u>	
3			Perf. top _____
2			Perf. bottom _____
Liners Used			Perf. top _____
			Perf. bottom _____

CASING CEMENTED 4 1/2 SIZE No. Ft. _____ Date _____
115 lbs cement Drilling
COAL WAS ENCOUNTERED AT _____ FEET _____ INCHES
_____ FEET _____ INCHES FEET _____ INCHES
_____ FEET _____ INCHES FEET _____ INCHES

RESULT AFTER TREATMENT 165,000 cu. ft.
ROCK PRESSURE AFTER TREATMENT _____
Fresh Water _____ Feet Salt Water _____ Feet

Formation	Color	Hard or Soft	Top	Bottom	Oil, Gas or Water	Depth	Remarks
Dirt			0	5			
Slate			5	35			
Sand			35	55			
Slate			55	100			
Red Rock			100	103			
Gray Slate			103	125			
Red Rock			125	129			
Coal			129	130			
Slate			130	150			
Slate			150	175			
Sand hard			175	205			
Slate			205	210			
Sand			210	265			
Slate			265	275			
Sand			275	287			
Slate Dark			287	308			
Slate Lite			304	332			
Red Rock			332	349			
Slate & Shells			349	370			
Red Rock			370	375			
Sand Shells			375	395			
Gray Slate			395	416			
Sand			416	470			
Slate Gray			470	565			
Slate			565	615			
Gritty Lime			615	665			
Red Rock			665	692			
Slate			692	740			
Red Rock			740	760			
Slate			760	780			

Water at 40 ft. hole full

Formation	Color	Hard or Soft	Top <i>Z</i>	Bottom	Oil, Gas or Water	Depth Found	Remarks
Red Rock			780	795			
Slate			795	810			
Blue Shells			810	816			
Show Coal			816	818			
Blue Shells			818	830			
Red Rock			830	845			
Slate			845	891			
Show Coal			891	894			
Slate			894	905			
Lime			905	960			
Slate			960	1000			
Red Rock			1000	1015			
Sand			1015	1040			
Black Lime			1040	1055			
Slate			1055	1098			
Sand			1098	1135			
Slate & Shells			1135	1324			
Sand			1324	1360			
Slate & Shells			1360	1600			
Sand			1600	1710			
Slate & Shells			1710	1825			
Sand			1825	1830			
Red Rock			1830	1855			
White Slate			1855	1860			
Lime Shells			1860	1895			
Little Lime			1895	1905			
Pencil			1905	1915			
Big Lime			1915	1958			
Sand hard			1958	1964			
Sandy Lime			1964	2000			
Sand			2004	2048			
Slate			2048	2050			
Lime Shell			2050	2059			
Slate			2059	2136			
Sandy Shale			2136	2170			
Sand			2170	2180			
Gritty Lime			2180	2188			
Weir Sand			2188	2195			
Lime			2195	2275			
Slate			2275	2373			
Sandy Lime			2373	2385			
Slate & Shell			2385	2426			
Gritty Lime			2426	2441			
Slate			2441	2460			
Sand			2460	2475			
Slate, Shells			2475	2582			
Sand			2582	2590			
Slate			2590	2625			
Lime Shells			2625	2633			
Slate			2693	2660			
Sand			2660	2665			
Slate			2665	2675			
Slate Shells			2675	2694			
Sand - Gordon			2694	2700			
Slate			2700				

Water Hole Full 1344-1354

Date _____, 19____

APPROVED _____, Owner

By _____ (Title)