

New Location
 Drill Deeper
 Abandonment - 4-11-74

Big "D" Industrial Equipment, Inc.

Company EASTERN INTERIOR OIL CO.
 Address PARKERSBURG, W.VA.
 Farm N. M. WELCH
 Tract _____ Acres 170 Lease No. _____
 Well (Farm) No. ONE Serial No. _____
 Elevation (Spirit Level) 921' NC
 Quadrangle VADIS 2-3
 County DODDRIE District GREENBRIER
 Engineer Carl Waterman
 Engineer's Registration No. 3788
 File No. _____ Drawing No. _____
 Date 8/12/61 Scale 1" = 400'

STATE OF WEST VIRGINIA
 DEPARTMENT OF MINES
 OIL AND GAS DIVISION
 CHARLESTON

WELL LOCATION MAP
 FILE NO. DOD-601-P

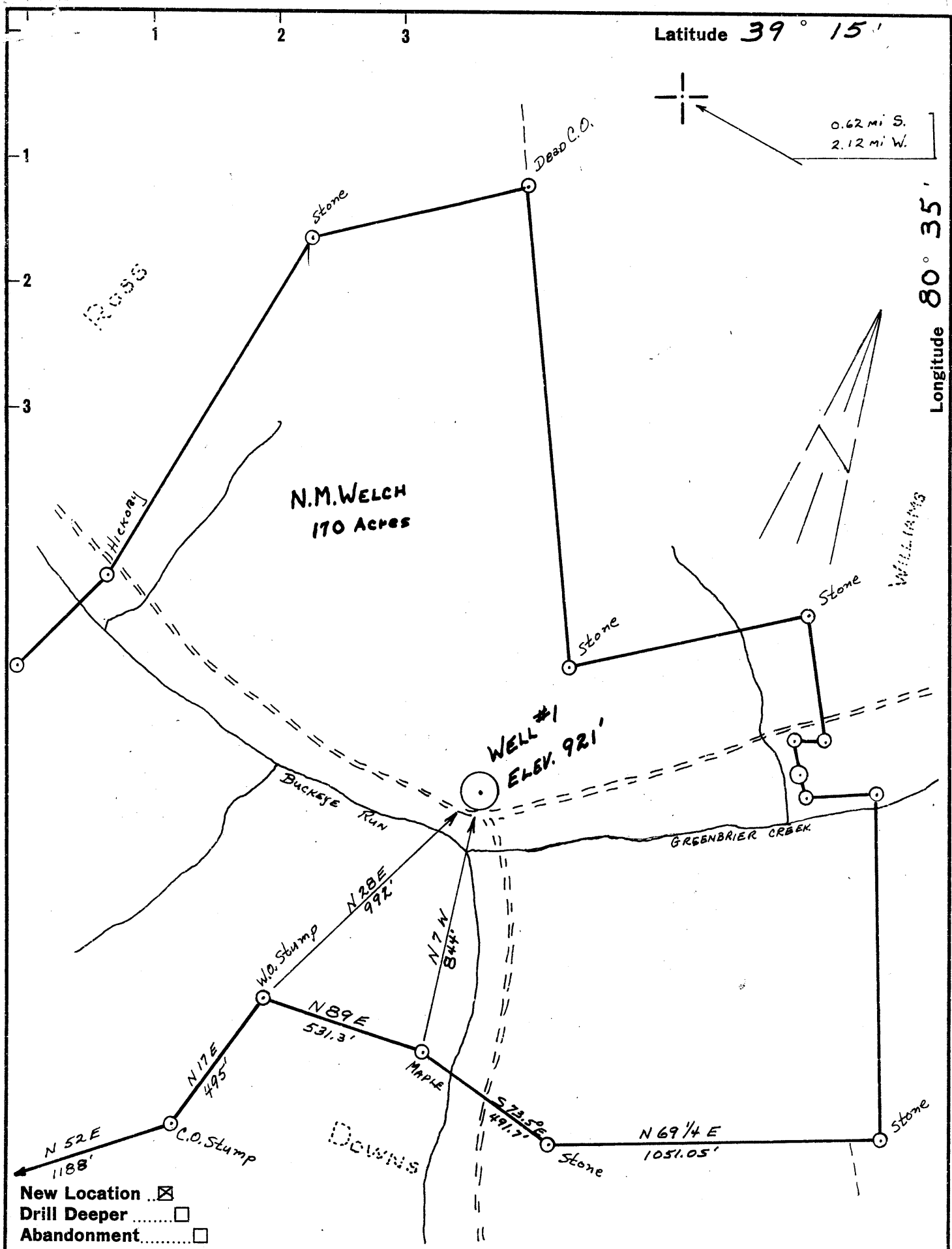
plugged 5-22-74

+ Denotes location of well on United States Topographic Maps, scale 1 to latitude and longitude lines being represented by border lines as shown.

- Denotes one inch spaces on border line of original tracing.

47 017

M



Company EASTERN INTERIOR OIL CO.
 Address PARKERSBURG, W.VA.
 Farm N. M. WELCH
 Tract _____ Acres 170 Lease No. _____
 Well (Farm) No. ONE Serial No. _____
 Elevation (Spirit Level) 921'
 Quadrangle VADIS - NC
 County DODDRIDGE District GREENBRIER
 Engineer Chas Waterman
 Engineer's Registration No. 3788
 File No. _____ Drawing No. _____
 Date 8/12/61 Scale 1" = 400'

STATE OF WEST VIRGINIA
 DEPARTMENT OF MINES
 OIL AND GAS DIVISION
 CHARLESTON

WELL LOCATION MAP
 FILE NO. DOD - 601

+ Denotes location of well on United States Topographic Maps, scale 1 to latitude and longitude lines being represented by border lines as shown.

- Denotes one inch spaces on border line of original tracing.

60 19



STATE OF WEST VIRGINIA
DEPARTMENT OF MINES
OIL AND GAS DIVISION

Quadrangle D&V Vadis

Permit No. DOD-601

WELL RECORD

Oil or Gas Well O & G

Company Eastern Interior Oil Company
Address 1309 Arcade Building, St. Louis 1, Mo.
Farm N. M. Welch 5 miles N.W. Acres 161
Location (waters) Buckeye Fork, middle island Creek
Well No. I Elev. 1096'
District Greenbriar County Doddridge
The surface of tract is owned in fee by Snyder heirs
Address Salem, W. Va.
Mineral rights are owned by Snyder heirs & N. M. Welch
Address _____

Casing and Tubing	Used in Drilling	Left in Well	Packers
Size			Kind of Packer
16	23'	23'	
13			
10	381	None	Size of
8 3/4	1407	1407'	
6 3/4			Depth set
5 1/2		2766	
3			Perf. top
2			Perf. bottom
Liners Used			Perf. top
			Perf. bottom

Drilling commenced 11/11/61
Drilling completed 12/21/61
Date Shot _____ From _____ To _____
With _____
Open Flow _____ /10ths Water in _____ Inch
_____ /10ths Merc. in _____ Inch
Volume show _____ Cu. Ft.
Rock Pressure 220# _____ lbs. _____ 2 1/2 hrs.
Oil show _____ bbls., 1st 24 hrs.
WELL ACIDIZED _____

CASING CEMENTED 5 1/2 SIZE 2766 No. F 12/22/61 Date
60 sks. cement, 20 sks. aquagel HALLIBURTON

COAL WAS ENCOUNTERED AT 565 FEET _____ INCHES
_____ FEET _____ INCHES FEET _____ INCHES
_____ FEET _____ INCHES FEET _____ INCHES

WELL FRACTURED Cleaning out after frac, no guage available

RESULT AFTER TREATMENT 15 MCF

ROCK PRESSURE AFTER TREATMENT 220# 2 1/2 HOURS

Fresh Water 15' _____ Feet. Salt Water 1365 _____ Feet

*Oil probably dry
Gas Well
Volumes ??*

Formation	Color	Hard or Soft	Top	Bottom	Oil, Gas or Water	Depth	Remarks
Soil			0	25	Surface water at 15'		
Slate			25	30			
Red Rock			30	35			
Slate			35	60			
Sand			60	70			
Slate			70	95			
Sand			95	105			
Slate			105	125			
Sand			125	140			
Red Rock			140	160			
Slate			160	190			
Sand			190	200			
Sand			200	215			
Sand, Hard			215	220			
Sand			220	265			
Black Slate			265	290			
Slate			290	292			
Slate & Shells			292	330			
Red Rock			330	385			
Lime			385	400			
Red Rock			400	420			
Slate			420	440			
Sand			440	500			
Slate			500	535			
Sand			535	545			
Slate			545	555			
Sand			555	565			
Coal			565	571			
Sand			571	595			
Slate			595	610			

Coal seam at 565- 571, 8 5/8" pipe set at 1407', jelled with 20 bags.

Formation	Color	Hard or Soft	Top 5	Bottom	Oil, Gas or Water	Depth Found	Remarks
Sand			610	660			
Slate			660	667			
Sand			667	700			
Slate			700	740			
Sand			740	760			
Red Rock			760	800			
Slate & Shells			800	940			
Red Rock			940	960			
Slatr & Shells			960	965			
Sand			965	1000			
Slate			1000	1010			
Sand			1010	1042			
Pink Rock			1042	1050			
Slate & Shells			1050	1100			
Black Slate			1100	1128			
Sand, Big Dunkard			1128	1195			
Black Slate			1195	1205			
Hard Sand			1205	1265			
Slate, Dark			1265	1287			
Sand, Hard			1287	1300			
Dark Slate			1300	1315			
Snd, Hard			1315	1340			
Black Shte			1340	1365			
Salt Sand			1365	1395			
Black Slate			1395	1420			
Sand			1420	1447			
Slate, Light			1447	1485			
Sand			1485	1400			
Dark Slzte			1400	1425			
Light Sand			1425	1455			
Dark Slate			1455	1480			
Hard Sand			1480	1505			
Light Slate			1505	1565			
Sand			1565	1600			
Dark Slate			1600	1645			
Hard Sand			1645	1595			
Dark Shte			1695	1720			
Light Sand			1720	1735			
Dark Slate			1735	1800			
Dz Sand			1800	1820			
Slate			1820	1855			
Slate & Shells			1855	1860			
Sand			1860	1865			
Red Rock			1865	1880			
Sand			1880	1900			
Shte			1900	1925			
Lins Big			1915	2005			
Sand, Injun			2005	2050			
Slate			2050	2145			
Sand			2145	2191			
Slate & Shells			2191	2580			
Sand			2580	2605			
Slate & Shells			2605	2668			
Sand			2668	2675			
Slate			2675	2698			
Sand , Gordon			2698	2706	Show oil & Gas 2698-2706		
Shte			2706	2766			
Total depth		2766					

Well cemented as follows; Circulated with fresh water, mixed and ran 20 bags aquagel, mixed 60 bags high early cement and 10 gallon latex and run.

Date 1/14/62

19

APPROVED Eastern Interior Oil Company, Owner

By *[Signature]* (Title) Sup't.