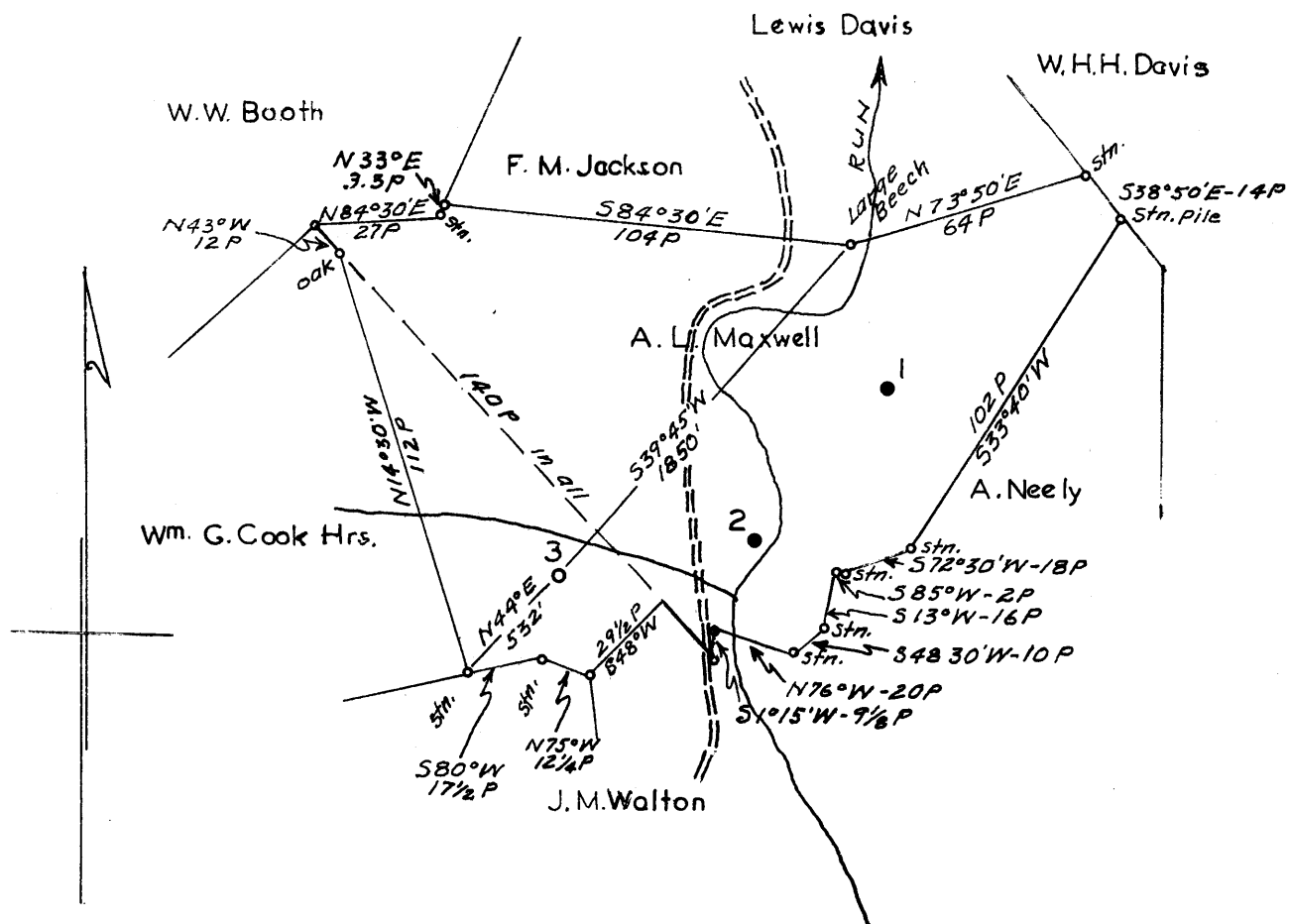


Latitude 39° 15'

Longitude 80° 40'



Surface: J.M. Walton, New Milton, W. Va.

Coal: Virginia A. Tetrick
P.O. Box 267
Clarksburg, W. Va.

1.9

New Location
 Drill Deeper
 Abandonment

Map N17 S16 W5

| | |
|-----------------------------|-------------------------------|
| Company | SOUTH PENN OIL CO. |
| Address | PARKERSBURG, W. Va. |
| Farm | A. L. MAXWELL |
| Tract | Acres 95 Lease No. 80783 |
| Well (Farm) No. | 3 Serial No. |
| Elevation (Spirit Level) | 935.98' ground. |
| Quadrangle | VADIS NW |
| County | DODDRIDGE District NEW MILTON |
| Engineer | A. C. Hillert |
| Engineer's Registration No. | 2534 |
| File No. | 1345 Drawing No. |
| Date | July 28, 1961 Scale 1"=800' |

STATE OF WEST VIRGINIA
 DEPARTMENT OF MINES
 OIL AND GAS DIVISION
 CHARLESTON

WELL LOCATION MAP
 FILE NO. DOD-594

+ Denotes location of well on United States Topographic Maps, scale 1 to 62,500, latitude and longitude lines being represented by border lines as shown.

- Denotes one inch spaces on border line of original tracing.

TCP



STATE OF WEST VIRGINIA
DEPARTMENT OF MINES
OIL AND GAS DIVISION 4

Quadrangle VADIS

WELL RECORD

Permit No. DOD-594

Oil or Gas Well Oil & Gas
(KIND)

Company SOUTH PENN OIL COMPANY
Address P. O. Box 1280, Parkersburg, W. Va.
Farm A. L. Maxwell Acres 95
Location (waters) -
Well No. 3 Elev. 935.98
District New Milton County Doddridge
The surface of tract is owned in fee by J. M. Walton
Address New Milton, W. Va.
Mineral rights are owned by Russell C. Enlow, et al.
P. O. Box 1409 Address Dalhart, Texas
Drilling commenced August 9, 1961
Drilling completed September 11, 1961
Date Shot - From - To -
With -
Open Flow /10ths Water in Inch
/10ths Merc. in Inch
Volume 85,000 Cu. Ft.
Rock Pressure 300 lbs. hrs.
Oil 25 barrels (flowed) bbls., 1st 24 hrs.
WELL ACIDIZED -
WELL FRACTURED September 13, 1961 by Dowell

| Casing and Tubing | Used in Drilling | Left in Well | Packers |
|-------------------|------------------|--------------|-------------------------|
| Size | | | Kind of Packer <u>-</u> |
| 16 | | | |
| 13 | | | |
| 10 | 450' | 450' | Size of <u>-</u> |
| 8 1/4 | 1081' | 1081' | |
| 7 1/2 | 1971' | 1971' | Depth set <u>-</u> |
| 5 3/16 | | | |
| 3 | | | Perf. top <u>-</u> |
| 2 | | | Perf. bottom <u>-</u> |
| Liners Used | | | Perf. top <u>-</u> |
| | | | Perf. bottom <u>-</u> |

CASING CEMENTED 7" SIZE 200 No. Ft. 8/30/61 Date

COAL WAS ENCOUNTERED AT - FEET - INCHES
- FEET - INCHES - FEET - INCHES
- FEET - INCHES - FEET - INCHES

RESULT AFTER TREATMENT Gas - 150,000 Cu. Ft.
Oil - 175 Barrels Flowed
ROCK PRESSURE AFTER TREATMENT Flowing through 7" casing - Rock Pressure not taken
Fresh Water - Feet - Salt Water - Feet -

| Formation | Color | Hard or Soft | Top | Bottom | Oil, Gas or Water | Depth | Remarks |
|-----------|-------|--------------|-----|--------|-------------------|-------|---------------|
| Clay | | | 0 | 30 | | | |
| Red Rock | | | 30 | 45 | | | |
| Sand | | | 45 | 50 | | | |
| Red Rock | | | 50 | 85 | | | |
| Blue Clay | | | 85 | 100 | | | |
| Red Rock | | | 100 | 135 | | | |
| Slate | | | 135 | 140 | | | |
| Red Rock | | | 140 | 175 | | | |
| Lime | | | 175 | 188 | | | |
| Sand | | | 188 | 235 | | | |
| Slate | | | 235 | 244 | | | |
| Red Rock | | | 244 | 260 | | | |
| Slate | | | 260 | 285 | | | |
| Lime | | | 285 | 300 | | | |
| Slate | | | 300 | 317 | | | |
| Red Rock | | | 317 | 366 | | | |
| Lime | | | 366 | 370 | | | |
| Sand | | | 370 | 390 | | | |
| Slate | | | 390 | 415 | | | |
| Red Rock | | | 415 | 452 | Water | 390 | 3 Bailers/Hr. |
| Lime | | | 452 | 465 | | | |
| Slate | | | 465 | 510 | | | |
| Lime | | | 510 | 525 | | | |
| Slate | | | 525 | 585 | | | |
| Lime | | | 585 | 600 | | | |
| Slate | | | 600 | 630 | | | |
| Red Rock | | | 630 | 650 | | | |

| Formation | Color | Hard or Soft | Top 4 | Bottom | Oil, Gas or Water | Depth Found | Remarks |
|----------------|-------|--------------|-------|--------|-------------------|-------------|----------------|
| Slate | | | 650 | 690 | | | |
| Lime | | | 690 | 705 | | | |
| Slate | | | 705 | 780 | | | |
| Lime | | | 780 | 788 | | | |
| Slate | | | 788 | 805 | | | |
| Lime | | | 805 | 820 | | | |
| Slate | | | 820 | 845 | | | |
| Black Slate | | | 845 | 905 | | | |
| Murphy Sand | | | 905 | 942 | | | |
| Lime | | | 942 | 952 | Water | 905-942 | 12 Bailers/Hr. |
| Slate | | | 952 | 970 | | | |
| Lime | | | 970 | 982 | | | |
| Slate | | | 982 | 1010 | | | |
| Lime | | | 1010 | 1022 | | | |
| Slate | | | 1022 | 1038 | | | |
| Lime | | | 1038 | 1055 | | | |
| Slate | | | 1055 | 1071 | | | |
| Big Dunkard | | | 1071 | 1106 | | | |
| Slate | | | 1106 | 1134 | | | |
| Sand Hard | | | 1134 | 1203 | | | |
| Slate | | | 1203 | 1235 | | | |
| Lime | | | 1235 | 1251 | | | |
| Black Slate | | | 1251 | 1258 | | | |
| Slate | | | 1258 | 1347 | | | |
| 1st. Salt Sand | | | 1347 | 1408 | | | |
| Black Slate | | | 1408 | 1450 | | | |
| 2nd Salt Sand | | | 1450 | 1511 | | | |
| Slate | | | 1511 | 1561 | | | |
| Sand & Slate | | | 1561 | 1590 | | | |
| Sand | | | 1590 | 1680 | | | |
| Black Slate | | | 1680 | 1778 | | | |
| Lime | | | 1778 | 1849 | | | |
| Blue Monday | | | 1849 | 1902 | | | |
| Big Lime | | | 1902 | 1952 | | | |
| Big Injun | | | 1952 | 2028 | | | |
| Soft Slate | | | 2011 | 2023 | Gas | 1952 | Gas 85 MCF |
| | | | 2028 | 2051 | Oil | 1952-1956 | 25 barrels |
| TOTAL DEPTH | | | | 2051 | | | |

Date November 17, 1961

APPROVED ADULTH PENA OIL COMPANY, Owner

By George W. Wilsman
George W. Wilsman (Title) Land Agent