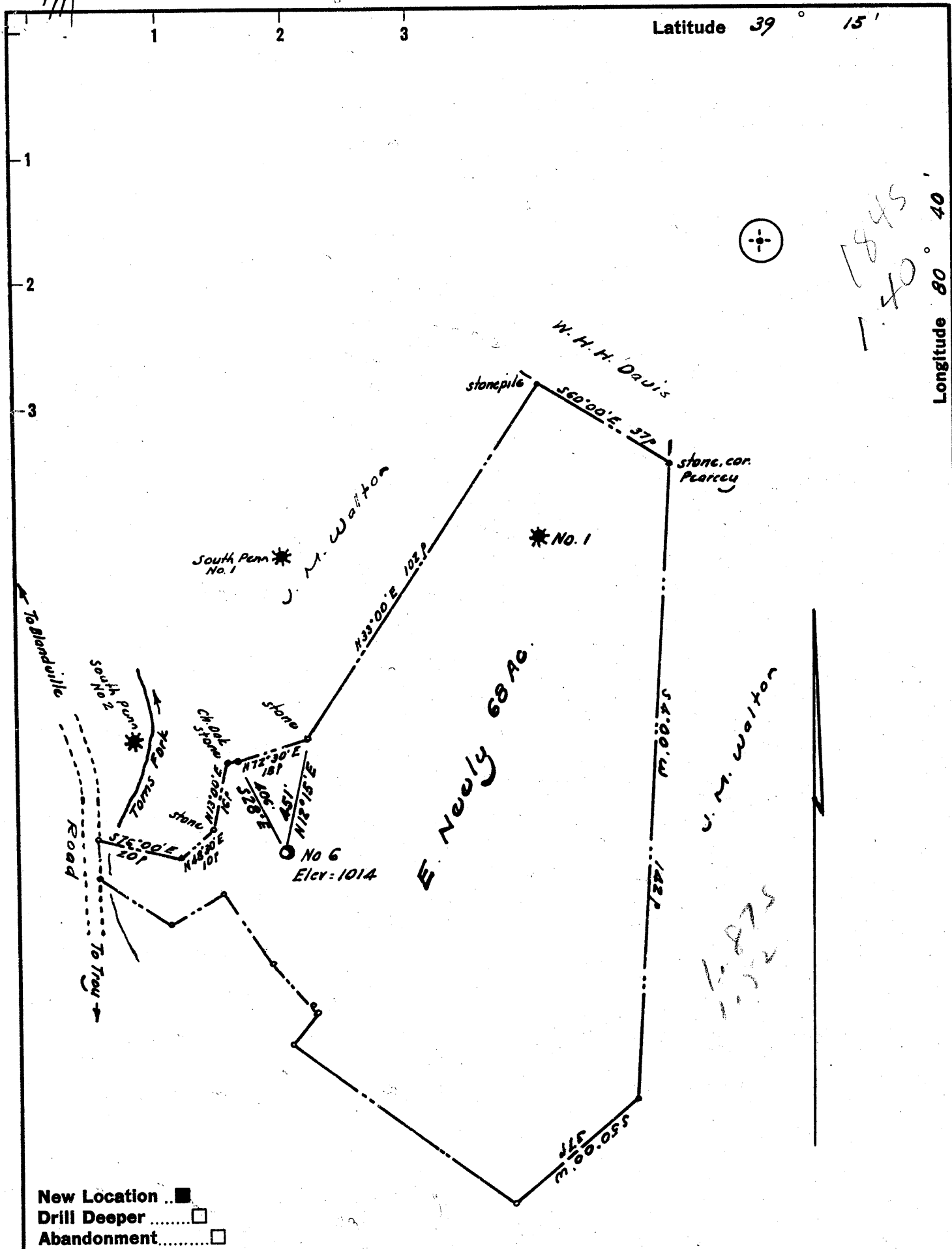


Latitude 39° 15'

Longitude 80° 40'



New Location ..   
 Drill Deeper .....   
 Abandonment.....

Company FERRELL L. PRIOR  
 Address 700 Union Trust Bldg. Parkersburg, W. Va.  
 Farm E. Newly  
 Tract \_\_\_\_\_ Acres 68 Lease No. \_\_\_\_\_  
 Well (Farm) No. Six Serial No. \_\_\_\_\_  
 Elevation (Spirit Level) 1014'  
 Quadrangle Kadis NW  
 County Doddridge District New Milton  
 Engineer W. H. H. Davis  
 Engineer's Registration No. 1227  
 File No. \_\_\_\_\_ Drawing No. \_\_\_\_\_  
 Date July 1961 Scale 1" = 30 p.

STATE OF WEST VIRGINIA  
 DEPARTMENT OF MINES  
 OIL AND GAS DIVISION  
 CHARLESTON

**WELL LOCATION MAP**  
 FILE NO. Dod-591

+ Denotes location of well on United States Topographic Maps, scale 1 to latitude and longitude lines being represented by border lines as shown.  
 - Denotes one inch spaces on border line of original tracing.



STATE OF WEST VIRGINIA  
DEPARTMENT OF MINES  
OIL AND GAS DIVISION

Quadrangle Vadis

WELL RECORD

Permit No. #DOD-591

Oil or Gas Well Oil  
(KIND)

Company Prior Oil Company  
Address 720 Union Trust Building, Pksbg., W. Va.  
Farm E. Neely # 6 Acres 68  
Location (waters) \_\_\_\_\_  
Well No. 6 Elev. 1014  
District New Milton County Doddridge  
The surface of tract is owned in fee by Russell C. Enlow  
Box 1409 Address Dalhart, Texas  
Mineral rights are owned by Russell C. Enlow  
Box 1409 Address Dalhart, Texas  
Drilling commenced 7/30/61  
Drilling completed 8/8/61  
Date Shot \_\_\_\_\_ From \_\_\_\_\_ To \_\_\_\_\_  
With \_\_\_\_\_  
Open Flow /10ths Water in \_\_\_\_\_ Inch  
/10ths Merc. in \_\_\_\_\_ Inch  
Volume Show \_\_\_\_\_ Cu. Ft.  
Rock Pressure Not Taken lbs. \_\_\_\_\_ hrs.  
Oil Show \_\_\_\_\_ bbls., 1st 24 hrs.  
WELL ACIDIZED \_\_\_\_\_

Casing and Tubing	Used in Drilling	Left in Well	Packers
Size			
16			Kind of Packer
13			
10	36'	36'	Size of
8 1/4			
6 5/8	700'		Depth set
<del>5 1/2</del> 4 1/2	2200'	2200'	
3			Perf. top 2140
2			Perf. bottom 2141
Liners Used			Perf. top 2163
			Perf. bottom 2164

CASING CEMENTED \_\_\_\_\_ SIZE \_\_\_\_\_ No. Ft. \_\_\_\_\_ Date \_\_\_\_\_  
2200 feet of 4 1/2" casing 50 sks. Cement  
(HALLIBURTON)  
COAL WAS ENCOUNTERED AT \_\_\_\_\_ FEET \_\_\_\_\_ INCHES  
\_\_\_\_\_ FEET \_\_\_\_\_ INCHES FEET \_\_\_\_\_ INCHES  
\_\_\_\_\_ FEET \_\_\_\_\_ INCHES FEET \_\_\_\_\_ INCHES

WELL FRACTURED 800 barrells water  
Drilled with rotary circulating gel  
RESULT AFTER TREATMENT 100 barrell oil  
ROCK PRESSURE AFTER TREATMENT 500 - 24hrs.  
Fresh Water none Feet \_\_\_\_\_ Salt Water none Feet \_\_\_\_\_

Formation	Color	Hard or Soft	Top	Bottom	Oil, Gas or Water	Depth	Remarks
Sand & Soil			0	48			
Shale			48	78			
Sand			78	166			
Shale			166	355			
Sand			355	380			
Shale & Sandy Shale			380	825			
Sand			825	840			
Shale & Sandy Shale			840	1225			
Sand			1225	1248			
Shale			1248	1306			
Sand			1306	1356			
Sand			1356	1496			
Sand			1496	1556			
Shale			1556	1596			
Sand & Shale			1596	1660			
Shale			1660	1770			
Sand			1770	1806			
Sand & Shale			1806	1861			
Shale			1861	1898			
Sandy Shale			1898	1946	Show oil		
Sand			1946	1974			
Lime			1974	1990			
Shale			1990	2000			
Lime (Big Lime)			2000	2072	Show oil		
Sand (Big Injun)			2072	2172	Show oil & gas		
Shale			2172	2195			
Total Depth			2195				

