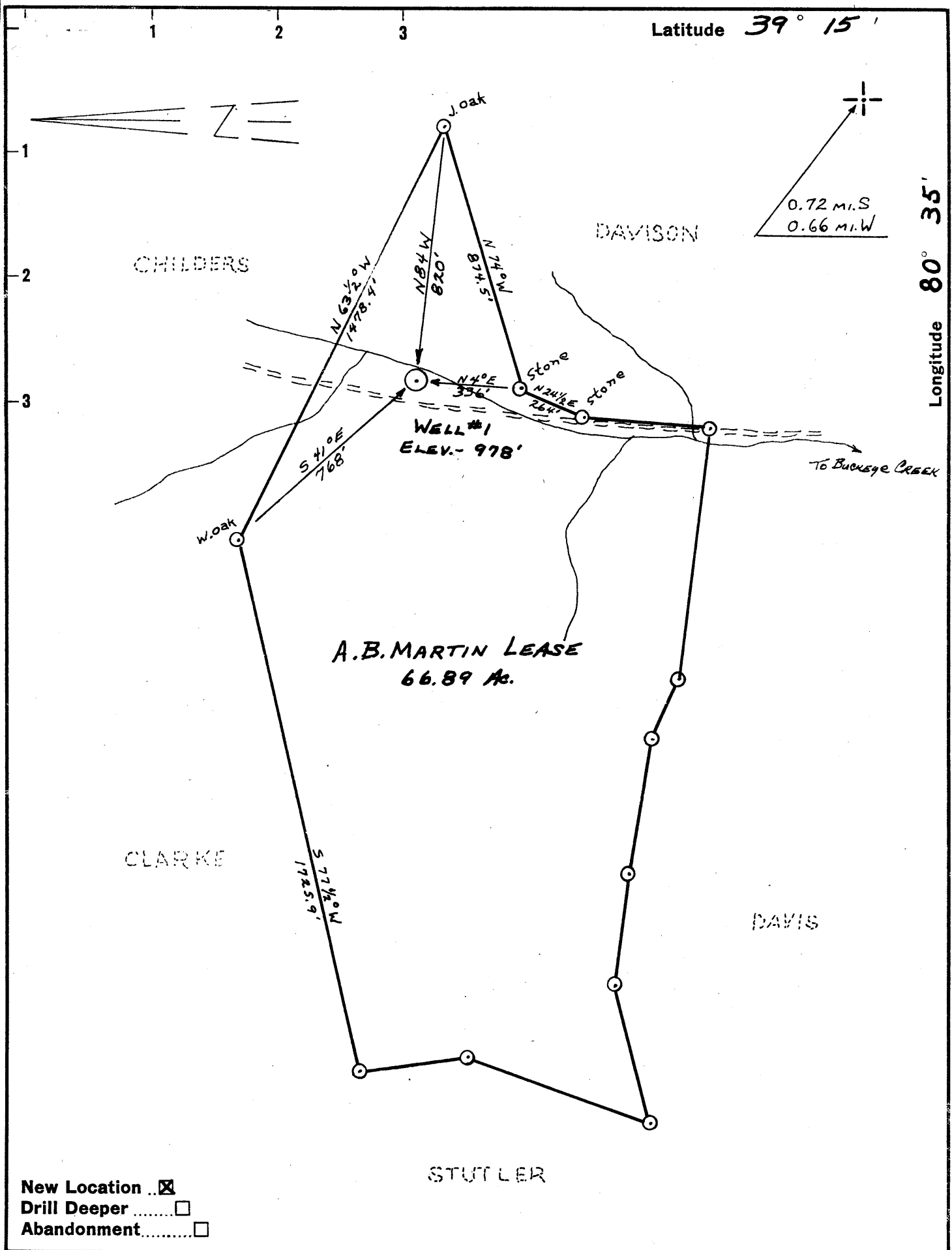


AM



New Location
 Drill Deeper
 Abandonment

Company EASTERN INTERIOR OIL CO.
 Address PARKERSBURG, W. VA.
 Farm A. B. MARTIN
 Tract _____ Acres 66.89 Lease No. _____
 Well (Farm) No. ONE Serial No. _____
 Elevation (Spirit Level) 978'
 Quadrangle VA. 15 - NC
 County DODDRIDGE District GREENBRIER
 Engineer Chat Waterman
 Engineer's Registration No. 3788
 File No. _____ Drawing No. _____
 Date 8/10/61 Scale 1" = 400'

STATE OF WEST VIRGINIA
 DEPARTMENT OF MINES
 OIL AND GAS DIVISION
 CHARLESTON

WELL LOCATION MAP
 FILE NO. DOD-585 REVISED

+ Denotes location of well on United States Topographic Maps, scale 1 to latitude and longitude lines being represented by border lines as shown.

- Denotes one inch spaces on border line of original tracing.



STATE OF WEST VIRGINIA
DEPARTMENT OF MINES
OIL AND GAS DIVISION 6

11/23/47-rpt d-1992
status = W-

Quadrangle Vadis NE

Permit No. DOD-585

WELL RECORD

Oil or Gas Well O & G
(KIND)

Company Eastern Interior Oil Company
Address 1809 Arcade Building, St. Louis 1, Mo.
Farm A. B. Martin Acres 66.89
Location (waters) Buckeye Creek
Well No. 1 Elev. 978'
District Greenbrier County Doddridge
The surface of tract is owned in fee by A. B. Martin
Long Island Address New York
Mineral rights are owned by A. B. Martin
Long Island Address New York
Drilling commenced August 20, 1961
Drilling completed September 9, 1961
Date Shot From To
With
Open Flow /10ths Water in Inch
/10ths Merc. in Inch
Volume Cu. Ft.
Rock Pressure 600# lbs. 15hrs. hrs.
Oil bbls., 1st 24 hrs.
WELL ACIDIZED

Casing and Tubing	Used in Drilling	Left in Well	Packers
Size			
16			Kind of Packer
13			
10			Size of
8 1/8	<u>701'</u>	<u>701'</u>	
6 3/8	<u>coal string</u>		Depth set
5 1/2	<u>2888'</u>	<u>2888'</u>	
3			Perf. top
2			Perf. bottom
Liners Used			Perf. top
			Perf. bottom

CASING CEMENTED 5 1/2 SIZE 2888' No. Ft. Date
175 sks. cement Dowell
COAL WAS ENCOUNTERED AT 650 to 660 FEET INCHES
FEET INCHES FEET INCHES
FEET INCHES FEET INCHES

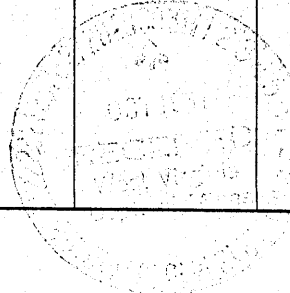
WELL FRACTURED Well fractured in Gordon, Big Injun and Keener

RESULT AFTER TREATMENT Cleaning out and testing after fractures Volumes ??

ROCK PRESSURE AFTER TREATMENT 600#, Big Injun

Fresh Water Feet Salt Water Feet

Formation	Color	Hard or Soft	Top	Bottom	Oil, Gas or Water	Depth	Remarks
Soil			0	5			
Sand			5	55			
Shale			55	65			
Sand			65	75			
Shale			75	150			
Sand			150	180			
Shale			180	185			
Sand			185	250			
Shale			250	265			
Sand			265	320			
Shale			320	370			
Sand			370	405			
Shale			405	430			
Sand			430	480			
Shale			480	500			
Sand			500	550			
Shale			550	605			
Sand			605	650			
COAL			650	660			
Sand			660	690			
Shale			690	725			
Sand			725	750			
Shale			750	845			
Sand			845	880			
Shale			880	1085			
Sand			1085	1105			
Shale			1105	1115			
Shale			1115	1205			
Sand			1205	1265			
Shale			1265	1400			



Formation	Color	Hard or Soft	Top 6	Bottom	Oil, Gas or Water	Depth Found	Remarks
Sand			1400	1430			
Shale			1430	1445			
Sand			1445	1520			
Shale			1510	1570			
Sand			1570	1600			
Shale			1600	1630			
Sand			1630	1665			
Sand & Shale			1665	1716			
Shale			1716	1784			
Sand			1784	1790			
Shale			1790	1860			
Sand			1860	1865			
Shale			1865	1932			
Lime			1932	1943			
Shale			1943	1975			
Lime, Big			1975	2025			
Shaley Lime			2025	2096	Show Oil & Gas	2036	
Sand, Big Ingus			2096	2129	Show oil & Gas	2096	
Shale			2129	2205	Show Oil & Gas	2205	
Sandy Shale			2205	2212			
Shale			2212	2242	Show oil & Gas	2242	
Sandy Shale			2242	2248			
Shale			2248	2414	Show Oil	2414	
Sandy Shale			2414	2450			
Shale			2450	2542	Show oil	2542	
Sand			2542	2560			
Shale			2560	2632			
Sand			2632	2648			
Shale			2648	2710	Show Oil	2710	
Sand, Gordon Stray			2710	2721			
Shale			2721	2744	Show Oil	2744	
Sand, Gordon			2744	2758			
Shale			2758	2798	Show Oil & Gas	2096	
Sand			2798	2812			
Shale			2812	2850			
Sand			2850	2865	Show Oil	2860	
Shale			2865	2928			
Sand			2928	2930			
Shale			2930	2967			
Sand			2967	2969			
Shale			2969	3012			
Total depth				3012			

Well cemented as follows Circulate with drilling mud and run 175 bags regular cement. This well was drilled with a rotary rig.

Date 10-23, 1961
 EASTERN INTERIOR OIL CO.
 APPROVED _____, Owner
 FERRISBURG, W. VA.
 By _____ (Title)