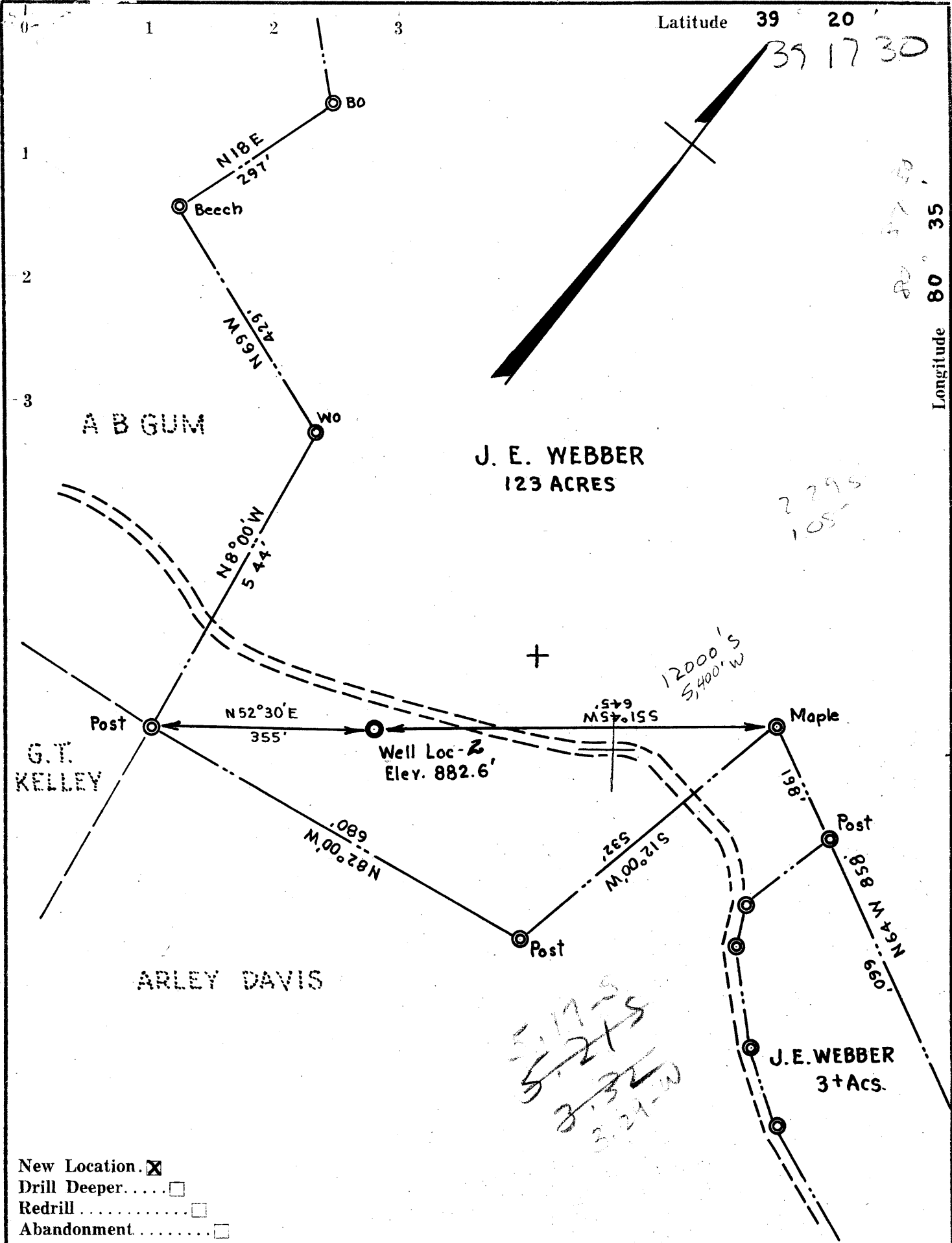


Latitude 39 20
39 17 30

Longitude 80 35



- New Location.
- Drill Deeper.
- Redrill
- Abandonment

Company	J. E. WEBBER
Address	CLARKSBURG, W. VA.
Farm	J. E. WEBBER
Tract	Acres 123 Lease No.
Well (Farm) No.	2 Serial No.
Elevation (Spirit Level)	882.6'
Quadrangle	CENTER POINT S 4 4
County	DODDRIDGE District GREENBRIER
Engineer	Henry A. Shasler
Engineer's Registration No.	2470
File No.	Drawing No.
Date	JUNE 26, 1961 Scale 1" = 200'

STATE OF WEST VIRGINIA
DEPARTMENT OF MINES
OIL AND GAS DIVISION
CHARLESTON

WELL LOCATION MAP

FILE NO. DOD-579

+ Denotes location of well on United States Topographic Maps, scale 1 to 62,500, latitude and longitude lines being represented by border lines as shown.

— Denotes one inch spaces on border line of original tracing.



STATE OF WEST VIRGINIA
DEPARTMENT OF MINES
OIL AND GAS DIVISION 6

Centerpoint Quadrangle

Permit No. DOD-579

WELL RECORD

Oil or Gas Well Gas

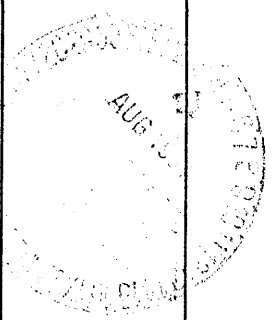
(KIND)

Company J. E. Webber et al
 Address Long Run, W. Va.
 Farm J. E. Webber Acres 123
 Location (waters) Buffalo Calf
 Well No. 2 Elev. _____
 District Greenbrier County Dodridge
 The surface of tract is owned in fee by J. E. Webber
 Address Long Run
 Mineral rights are owned by J. E. Webber
 Address Long Run
 Drilling commenced June 26, 1961
 Drilling completed July 26, 1961
 Date Shot _____ From _____ To _____
 With _____
 Open Flow _____ /10ths Water in _____ Inch
 _____ /10ths Merc. in _____ Inch
 Volume 200 MCF (Before fracture) _____ Cu. Ft.
 Rock Pressure 230 lbs. 12 hrs.
 Oil _____ bbls., 1st 24 hrs.
 Fresh water _____ feet _____ feet
 Salt water 1400 2nd _____ feet Salt & Sand _____ feet

Casing and Tubing	Used in Drilling	Left in Well	Packers
Size			
16	10'	10'	Kind of Packer
18			
10	220	pulled out	Size of
8 1/2	770	left in well	
6 1/2	1390	pulled	Depth set
5 3/16			
4 1/2	#9 2063"	cemented	Perf. top
2			Perf. bottom
Liners Used			Perf. top
			Perf. bottom

CASING CEMENTED 4 1/2 SIZE 2063" No. Ft. _____ Date _____
 Cemented, 35 Bag Dowell
 COAL WAS ENCOUNTERED AT 570 FEET 577 INCHES
 FEET INCHES FEET INCHES
 FEET INCHES FEET INCHES

Formation	Color	Hard or Soft	Top	Bottom	Oil, Gas or Water	Depth Found	Remarks
Cowbueom			0	8			
Slate			8	40	Water	40'	
Sand			40	60			
W. Slate			60	85			
R. Rock			85	100			
W. Slate			100	165	Water	2175-235	
Sand			165	200			
W. Slate			200	220	Water	230-235	
Sand			220	245			
B. Slate			245	275			
S & Shells			275	332			
R. Rock			332	445			
Slate & Shells			445	485			
R. Rock			485	570			
Pittsburgh-Coal			570	577			
Slate & Shells			577	595			
Sand			595	638			
Slate & Shells			638	740			
R. Rock			740	770			
W. Slate			770	780			
Sand			780	805			
Slate & Shells			805	1350			
1st Salt							
Sand			1350	1380			
Slate & Shells			1380	1460			
Sand			1460	1530			



Formation	Color	Hard or Soft	Top 6	Bottom	Oil, Gas or Water	Depth Found	Remarks
Slate & Shells			1530	1520			
Brorew Sawb			1620	1670			
Slate & Shells			1670	1750			
Sand			1750	1770			
R. Rock			1770	1790			
Slate & Shells			1790	1880			
Lime			1880	1985			
Sand			1985	2040			
Slate & Shells			2040	2063			
			TOTAL DEPTH	2063			
					7" - Pipe - 1390		
					4 1/2" Pipe 2063		
					Cemented with 35 bags, 4 bags jell ahead of cement.		
					Gas - 2008 - 2028.		
					(Fract - 43,000 Sand.)		
					1012 BBL Water		

Date _____, 19____

APPROVED Bechtel Corp. Owner

By John H. [Signature] Title