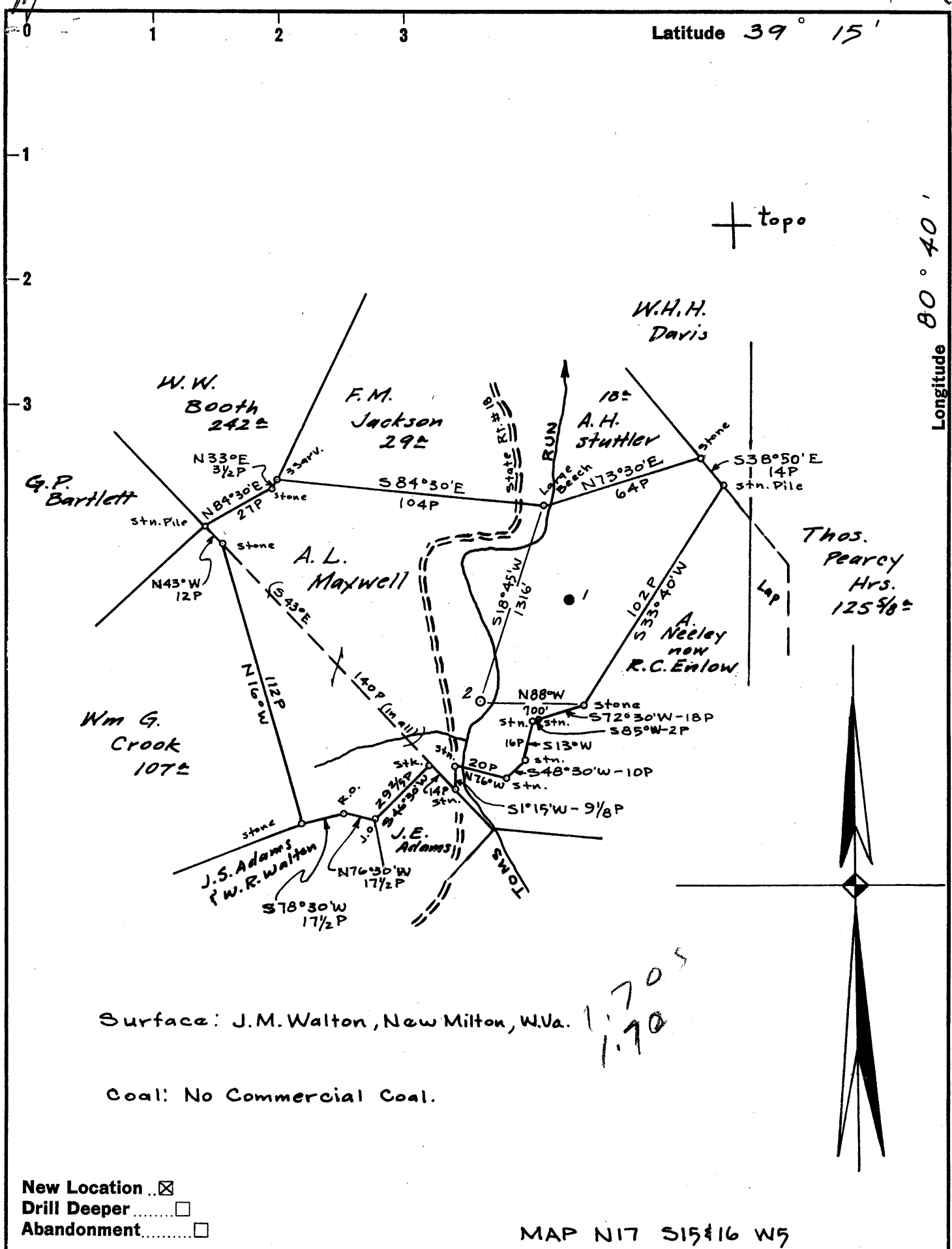


Latitude 39° 15'

Longitude 80° 40'



New Location
 Drill Deeper
 Abandonment

Company SOUTH PENN OIL CO.
 Address PARKERSBURG, W.Va.
 Farm A.L. MAXWELL
 Tract _____ Acres 95 ± Lease No. 80783
 Well (Farm) No. 2 Serial No. _____
 Elevation (Spirit Level) 833.73' ground
 Quadrangle VADIS NW
 County Doddridge District New Milton
 Engineer A.C. Gilbert
 Engineer's Registration No. 2534
 File No. 1345 Drawing No. _____
 Date June 15, 1961 Scale 1" = 800'

STATE OF WEST VIRGINIA
 DEPARTMENT OF MINES
 OIL AND GAS DIVISION
 CHARLESTON

WELL LOCATION MAP
 FILE NO. DOD-568

+ Denotes location of well on United States Topographic Maps, scale 1 to 62,500, latitude and longitude lines being represented by border lines as shown.

- Denotes one inch spaces on border line of original tracing.

6-6 144



STATE OF WEST VIRGINIA
DEPARTMENT OF MINES
OIL AND GAS DIVISION 5

Quadrangle VADIS

Permit No. DOD-568

WELL RECORD

Oil or Gas Well O & G
(KIND)

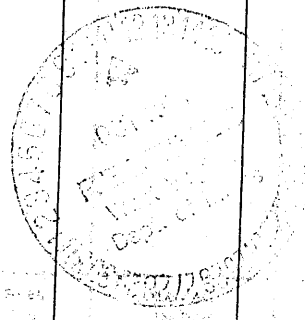
Company SOUTH PENN OIL COMPANY
Address P. O. Box 1280, Parkersburg, W. Va.
Farm A. L. Maxwell Acres 95
Location (waters) Toms Run
Well No. 2 Elev. 833.73
District New Milton County Doddridge
The surface of tract is owned in fee by J. M. Walton
Address New Milton, W. Va.
Mineral rights are owned by Russell C. Enlow, Et al.
P. O. Box 1409 Address Dalhart, Texas
Drilling commenced June 27, 1961
Drilling completed July 26, 1961
Date Shot - From - To -
With -
Open Flow /10ths Water in Inch
/10ths Merc. in Inch
Volume 100,000 Cu. Ft.
Rock Pressure 400 lbs. 48 hrs.
Oil 100 (flowed) bbls., 1st 24 hrs.
WELL ACIDIZED -
WELL FRACTURED September 15, 1961 by Dowell

Casing and Tubing	Used in Drilling	Left in Well	Packers
Size			Kind of Packer
16			
18 3/8"	21' 10"	21' 10"	
10.75	306' 0"	306' 0"	Size of
8 3/4 3.625	1009' 0"	NONE	Depth set
6 3/4			
5 1/2 5.5"	1978'	1978'	
3			Perf. top
2			Perf. bottom
Liners Used			Perf. top
			Perf. bottom

CASING CEMENTED 5.5 SIZE 1966 No. Ft. 9/11/61 Date
COAL WAS ENCOUNTERED AT - FEET - INCHES
- FEET - INCHES
- FEET - INCHES

RESULT AFTER TREATMENT Gas = 115,000 Cu. Ft.
Oil = 165 bbls. (flowed)
ROCK PRESSURE AFTER TREATMENT Not taken - well flowing
Fresh Water - Feet Salt Water - Feet

Formation	Color	Hard or Soft	Top	Bottom	Oil, Gas or Water	Depth	Remarks
Sand			0	5			
Red Mud			5	28			
Blue Mud			28	50			
Red Rock			50	60			
Sand			60	70			
Lime			70	100			
Red Rock			100	115			
Slate			115	155			
Red Rock			155	170			
Slate			170	180			
Red Rock			180	195			
Blue Rock			195	235			
Red Rock			235	250			
Lime			250	265			
Slate			265	283			
Red Rock			283	295			
Lime			295	325			
Red Rock			325	333			
Blue Slate			333	350			
R. Rock-Slate			350	370			
Slate & Lime			370	530			
Sand			530	540			
Slate			540	550			
Red Rock			550	585			
Slate			585	630			
Red Rock			630	645			
Lime			645	650			
Slate			650	695			
Lime			695	705			



Formation	Color	Hard or Soft	Top ⁵	Bottom	Oil, Gas or Water	Depth Found	Remarks
Red Rock			705	720			
Slate			720	780			
Lime			780	804			
Slate			804	900			
Lime			900	925			
Slate			925	965			
Lime			965	975			
Slate			975	990			
Big Dunkard			990	1020			
Slate			1020	1052			
Lime Hard			1052	1056			
Sand			1056	1118			
Slate			1118	1155			
Lime			1155	1185			
Black Slate			1185	1200			
Lime			1200	1209			
Sand			1209	1216			
Slate			1216	1255			
1st., Salt Sand			1255	1337			
Slate			1337	1354			
Lime Shells			1354	1392			
2nd., Salt Sand			1392	1422			
Slate			1422	1435			
Lime			1435	1450			
Slate			1450	1495			
Lime			1495	1505			
Sand			1505	1567			
Slate			1567	1570			
Sand			1570	1580			
Slate			1580	1660			
Lime			1660	1690			
Slate			1690	1719			
Lime			1719	1730			
Slate			1730	1735			
Lime			1735	1774			
Blue Monday			1774	1820			
Lime			1820	1853			
Big Injun			1853	1950			
					Oil & Gas	1855-1858'	8" Oil 100 bbls 24 hours Gas 100 MCF
Slate			1950	1963			
Lime			1963	1966			
			TOTAL DEPTH	1966			

Date October 10, 1961.

APPROVED SOUTH PENN OIL COMPANY, Owner

By George W. Wilsman
George W. Wilsman (Title) Land Agent