

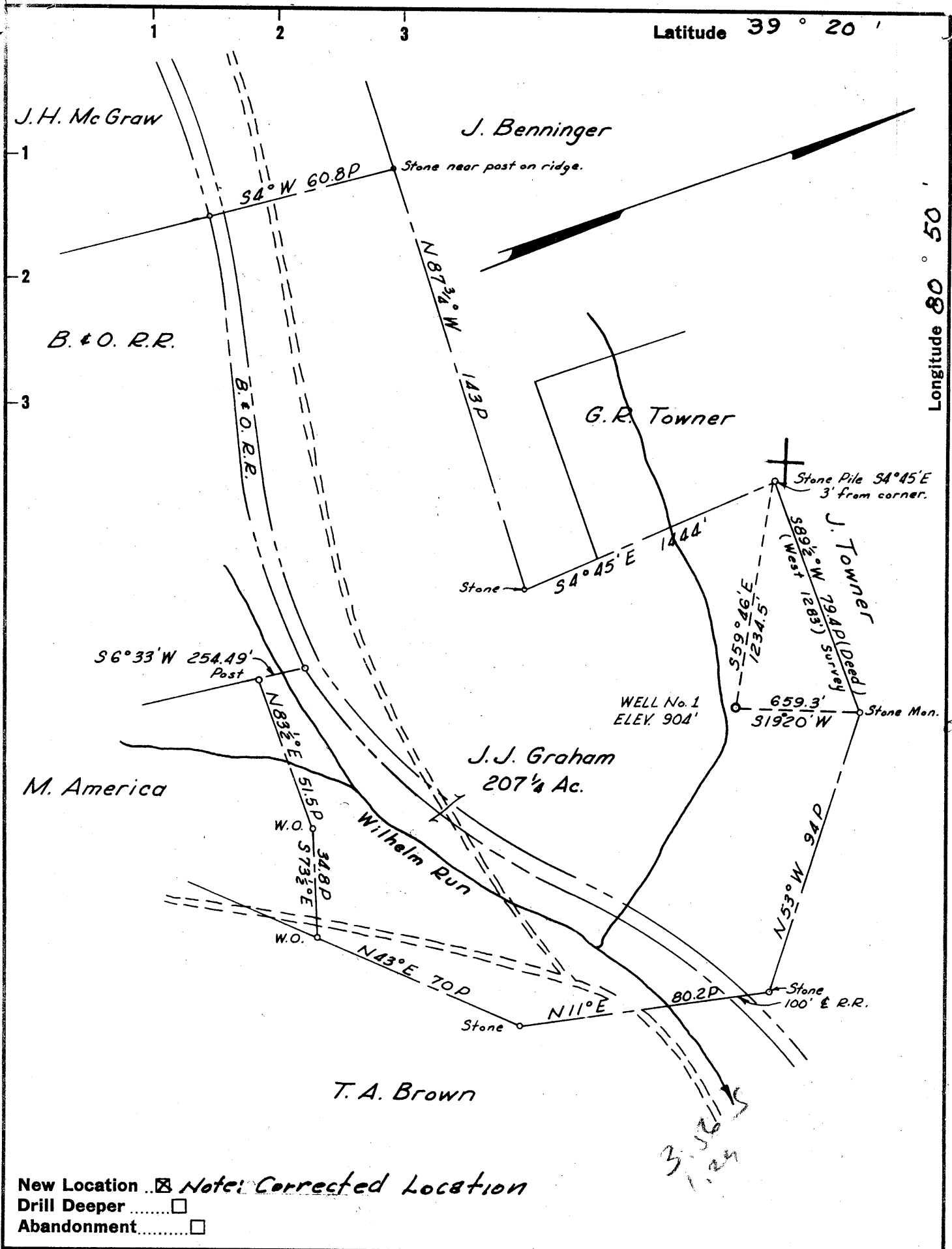
New Location  ~~Not Corrected Location~~  
 Drill Deeper   
 Abandonment

Company Starkestreet Lands Co.  
~~BEAUTIFUL DREAMER OIL CO.~~  
~~46 LEONARD HART, FOSTER P.O. Box 350,~~  
 Address Box 20, St. Marys, W. Va. Spencer, W. Va. 25276  
 Farm J. J. GRAHAM  
 Tract \_\_\_\_\_ Acres 207 1/2 Lease No. \_\_\_\_\_  
 Well (Farm) No. ONE Serial No. \_\_\_\_\_  
 Elevation (Spirit Level) 904'  
 Quadrangle WEST UNION SC  
 County DODDRIDGE District CENTRAL  
 Engineer Wm. H. Wilburn  
 Engineer's Registration No. 3935  
 File No. \_\_\_\_\_ Drawing No. \_\_\_\_\_  
 Date Dec 15, 1961 Scale 1" = 40 Feet

STATE OF WEST VIRGINIA  
 DEPARTMENT OF MINES  
 OIL AND GAS DIVISION  
 CHARLESTON

**WELL LOCATION MAP**  
 FILE NO. Doc-559-REVISED-P

+ Denotes location of well on United States Topographic Maps, scale 1 to 62,500, latitude and longitude lines being represented by border lines as shown.  
 - Denotes one inch spaces on border line of original tracing.



New Location  Note: Corrected Location  
 Drill Deeper   
 Abandonment

Company BEAUTIFUL DREAMER OIL Co.  
 Address c/o LEONARD HART, TRUSTEE  
Box 26, ST. MARY'S, W.VA.  
 Farm J. J. GRAHAM  
 Tract \_\_\_\_\_ Acres 207 1/2 Lease No. \_\_\_\_\_  
 Well (Farm) No. ONE Serial No. \_\_\_\_\_  
 Elevation (Spirit Level) 904'  
 Quadrangle WEST UNION SC  
 County DODDRIDGE District CENTRAL  
 Engineer Wm. H. Wilmoth  
 Engineer's Registration No. 3935  
 File No. \_\_\_\_\_ Drawing No. \_\_\_\_\_  
 Date Dec 15, 1961 Scale 1" = 40 Poles

STATE OF WEST VIRGINIA  
 DEPARTMENT OF MINES  
 OIL AND GAS DIVISION  
 CHARLESTON

**WELL LOCATION MAP**  
 FILE NO. DOD-559-REVISED

+ Denotes location of well on United States Topographic Maps, scale 1 to 62,500, latitude and longitude lines being represented by border lines as shown.  
 - Denotes one inch spaces on border line of original tracing.



STATE OF WEST VIRGINIA  
DEPARTMENT OF MINES  
OIL AND GAS DIVISION

Quadrangle West Union

Permit No. DOD-559

WELL RECORD

Oil or Gas Well Oil  
(KIND)

Company <u>Dreamer Oil Co., Leonard Hart, Trustee</u>	Casing and Tubing	Used in Drilling	Left in Well	Packers
Address <u>702 Second Street, St. Marys, W. Va.</u>				
Farm <u>J. J. Graham</u> Acres <u>207 1/2</u>	Size			
Location (waters) <u>Wilhelm Run</u>	16			Kind of Packer
Well No. <u>1</u> Elev. <u>904</u>	13			
District <u>Central</u> County <u>Doddridge</u>	10	<u>498</u>		Size of
The surface of tract is owned in fee by <u>J. J. Graham</u>	8 3/4	<u>1171</u>		
Address <u>West Union, W. Va.</u>	6 1/2		<u>1908</u>	Depth set
Mineral rights are owned by <u>J. J. Graham</u>	5 3/16	<u>Seamless</u>		
Address <u>West Union, W. Va.</u>	3			Perf. top
Drilling commenced <u>November 3, 1961</u>	2			Perf. bottom
Drilling completed <u>December 2, 1961</u>				Perf. top
Date Shot From To				Perf. bottom
With				

Open Flow /10ths Water in \_\_\_\_\_ Inch  
/10ths Merc. in \_\_\_\_\_ Inch

Volume \_\_\_\_\_ Cu. Ft.

Rock Pressure \_\_\_\_\_ lbs. \_\_\_\_\_ hrs.

Oil 48 bbls., 1st 24 hrs.

WELL ACIDIZED \_\_\_\_\_

WELL FRACTURED 12/5/61 with 500 gal. acid, 1,000 bbls. water, 40,000# sand.

CASING CEMENTED 5 1/2 SIZE 1908 No. Ft. 11/27/61 Date  
Cemented bottom 300 ft.  
50 sks. cement, 2 sks. aquagel GARATON  
COAL WAS ENCOUNTERED AT None FEET \_\_\_\_\_ INCHES  
\_\_\_\_\_ FEET \_\_\_\_\_ INCHES \_\_\_\_\_ FEET \_\_\_\_\_ INCHES  
\_\_\_\_\_ FEET \_\_\_\_\_ INCHES \_\_\_\_\_ FEET \_\_\_\_\_ INCHES

RESULT AFTER TREATMENT Approximately 100 bbls. oil daily

ROCK PRESSURE AFTER TREATMENT 500# 24 HOURS

Fresh Water None Feet \_\_\_\_\_ Salt Water None Feet \_\_\_\_\_

Formation	Color	Hard or Soft	Top	Bottom	Oil, Gas or Water	Depth	Remarks
Shale			0	697			
Red Rock			697	875			
Sand			875	900			
Shale			900	1025			
Sand			1025	1089			
Shale			1089	1115			
Sand			1115	1165			
Shale			1165	1168			
Lime			1168	1185			
Shale			1185	1306			
Sand			1306	1337			
Lime shells			1337	1375			
Sand			1375	1490			
Lime shells			1490	1535			
Sand			1535	1690			
Sand & shells			1690	1818			
Shale			1818	1822			
Lime (Greenbrier)			1822	1916			
Sand (Big Injun)			1916	1982			
Shale			1982	2017			
Total Depth				2017			

