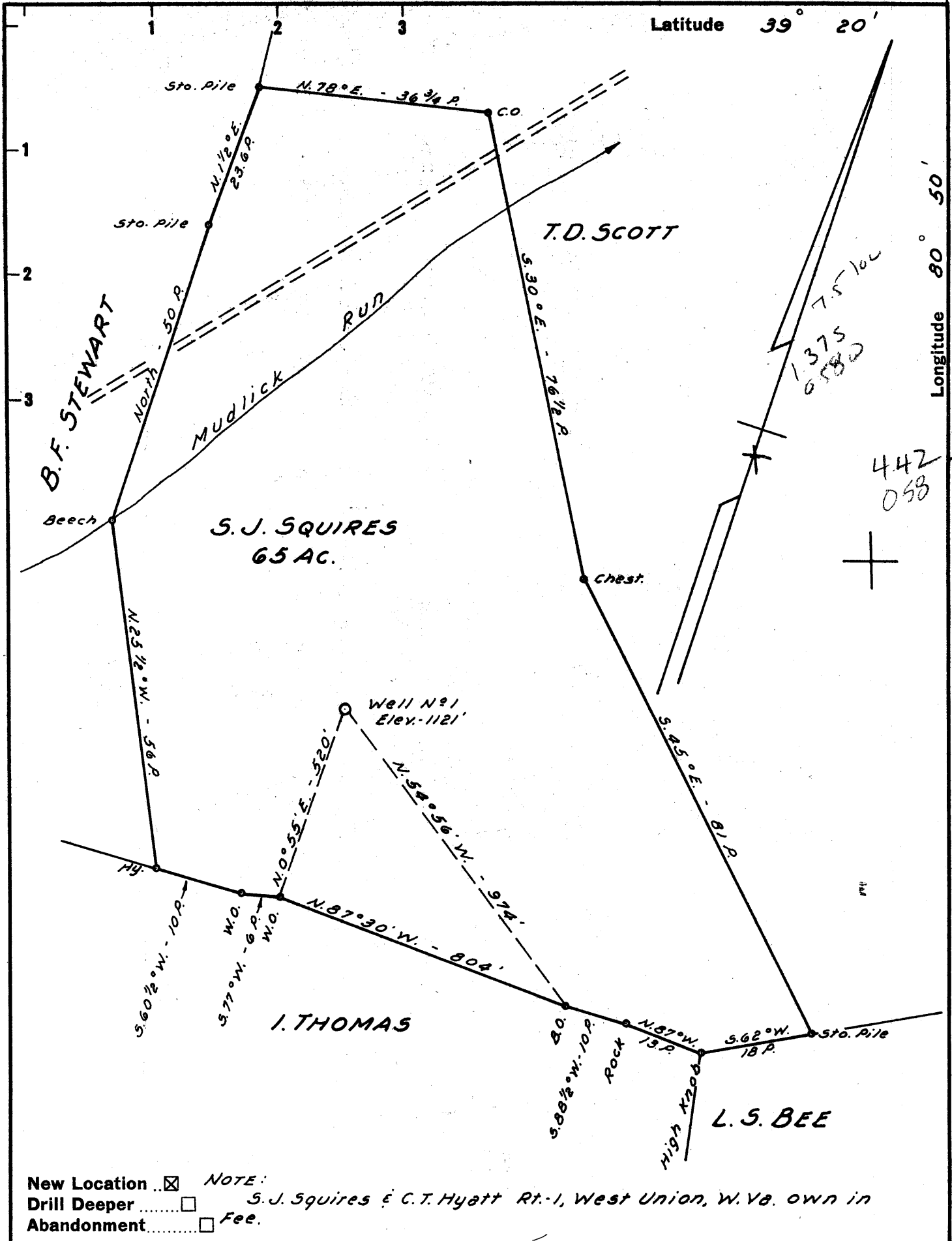


Latitude 39° 20'

Longitude 80° 50'



New Location NOTE:
 Drill Deeper S. J. Squires & C. T. Hyatt Rt. - 1, West Union, W. Va. own in
 Abandonment Fee.

Company DAVID W. LAW
 Address 716 UNION TRUST BLDG. PARKERSBURG, W. VA.
 Farm S. J. SQUIRES
 Tract _____ Acres 65 Lease No. _____
 Well (Farm) No. 1 Serial No. _____
 Elevation (Spirit Level) 1121'
 Quadrangle WEST UNION SC
 County DODDRIDGE District CENTRAL
 Engineer JOHN W. HAMILTON
 Engineer's Registration No. 2274
 File No. _____ Drawing No. _____
 Date MAY 2, 1961 Scale 1" = 20 POLES

STATE OF WEST VIRGINIA
 DEPARTMENT OF MINES
 OIL AND GAS DIVISION
 CHARLESTON

WELL LOCATION MAP
 FILE NO. DoD-553
Canc - An Rept O&G Div 1961

+ Denotes location of well on United States Topographic Maps, scale 1 to 62,500, latitude and longitude lines being represented by border lines as shown.

- Denotes one inch spaces on border line of original tracing.

