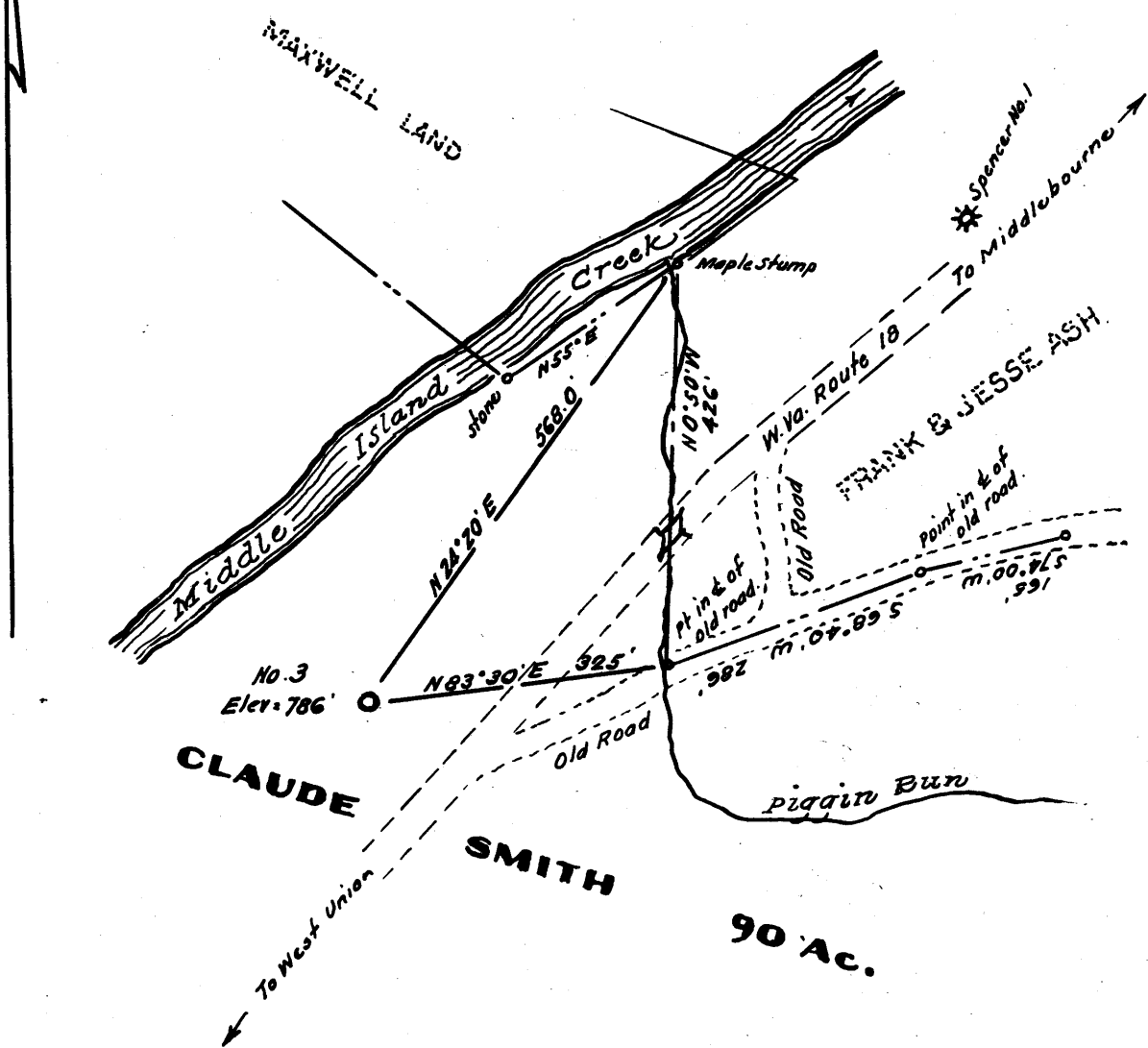


Latitude 39° 20'

Longitude 80° 45'



- New Location.
- Drill Deeper.
- Redrill.
- Abandonment.

Company **SMITH AND SIBERT**

Address **Box 205, West Union, W. Va.**

Farm **Claude Smith**

Tract _____ Acres **90 ac.** Lease No. _____

Well (Farm) No. **Three** Serial No. _____

Elevation (Spirit Level) **786'**

Quadrangle **West Union - SE**

County **Doddridge** District **West Union**

Engineer *[Signature]*

Engineer's Registration No. **1227**

File No. _____ Drawing No. _____

Date **April 1961** Scale **1" = 30p**

STATE OF WEST VIRGINIA
DEPARTMENT OF MINES
OIL AND GAS DIVISION
CHARLESTON

WELL LOCATION MAP
FILE NO. **DOD-550**

cancel - ancept O&G Div. 1961

+ Denotes location of well on United States Topographic Maps, scale 1 to 62,500, latitude and longitude lines being represented by border lines as shown.

— Denotes one inch spaces on border line of original tracing.