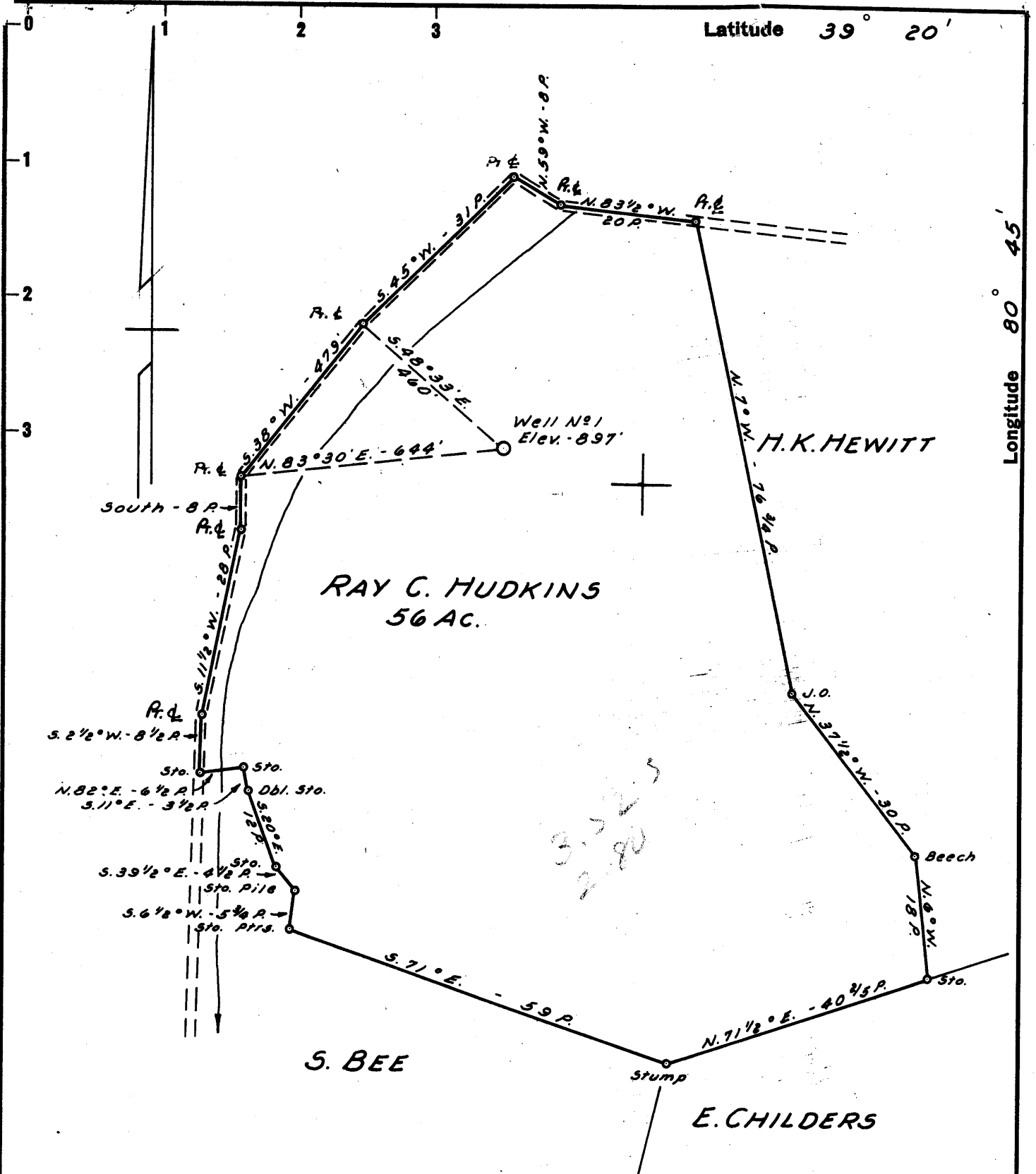


Latitude 39° 20'

Longitude 80° 45'



NOTE:

Ray C. Hudkins, West Union, W. Va. Rt. - 1 owns 1/2 the Mineral Rights.
 Everett Batton owns the Surface Rights and 1/2 the Mineral Rights.

- New Location
- Drill Deeper
- Abandonment

MAP TRANSFERRED TO F. C. STONE - 205 E. STATE ST. - ATHENS, OHIO

Company JACO OIL & GAS CO.
 Address 50 CLARENCE POWELL AGT. WEST UNION, W. VA.
 Farm RAY C. HUDKINS
 Tract _____ Acres 56 Lease No. _____
 Well (Farm) No. 1 Serial No. _____
 Elevation (Spirit Level) 897'
 Quadrangle WEST UNION - SE
 County DODDRIDGE District WEST UNION
 Engineer JOHN W. HAMILTON
 Engineer's Registration No. 2274
 File No. _____ Drawing No. _____
 Date FEB. 7, 1961 Scale 1" = 20 POLES

4-18-61
 STATE OF WEST VIRGINIA
 DEPARTMENT OF MINES
 OIL AND GAS DIVISION
 CHARLESTON
WELL LOCATION MAP
 FILE NO. DOD-528

+ Denotes location of well on United States Topographic Maps, scale 1 to 62,500, latitude and longitude lines being represented by border lines as shown.
 - Denotes one inch spaces on border line of original tracing.

89



STATE OF WEST VIRGINIA
DEPARTMENT OF MINES
OIL AND GAS DIVISION

Quadrangle West Union

Permit No. DOD-528

WELL RECORD

Oil or Gas Well Gas
(KIND)

Company F. C. Stone Oil & Gas
Address 205 E. State St. Athens Ohio
Farm Ray C. Hudkins Acres 58
Location (waters) Arnolds Creek
Well No. 1 Elev. 1059
District Central WEST UNION County Doddridge
The surface of tract is owned in fee by 1/2 Everett Batton
1/2 Ray C. Hudkins Address West Union, W. Va.
Mineral rights are owned by 1/2 Everett Batton
1/2 Ray C. Hudkins Address Greenwood, West Va.

Casing and Tubing	Used in Drilling	Left in Well	Packers
Size			Kind of Packer
16			
13			
10			Size of
8 1/4			
6 5/8			Depth set
5 1/2 5 1/2		2195	
3			Perf. top 2068'
2			Perf. bottom 2089
Liners Used			Perf. top
			Perf. bottom

Drilling commenced 4/21/61

Drilling completed 5/5/61

Date Shot From To

With

Open Flow /10ths Water in Inch

/10ths Merc. in Inch

Volume Cu. Ft.

Rock Pressure lbs. hrs.

Oil bbls., 1st 24 hrs.

WELL ACIDIZED

WELL FRACTURED Halibutton - 600 BBL. water

CASING CEMENTED 5 1/2 SIZE 325 No. Ft. 5/5/61 Date
25 Sacks Cement
Lawson Cementing Company
COAL WAS ENCOUNTERED AT FEET INCHES
FEET INCHES FEET INCHES
FEET INCHES FEET INCHES

RESULT AFTER TREATMENT 200,000 cu. ft. gas - slight show of oil

ROCK PRESSURE AFTER TREATMENT approx. 125 2 hrs.

Fresh Water None Logged Feet Salt Water none Feet

Formation	Color	Hard or Soft	Top	Bottom	Oil, Gas or Water	Depth	Remarks
Soil & Shale			0	75			
Sand			75	102			
Shale & Sandy Shale			102	578			
Sand			578	633			
Shale			633	725			
Sand			725	763			
Shale & Sandy Shale			763	1211			
Sand			1211	1232			
Shale			1232	1401			
Sand			1401	1454			
Shale			1454	1503			
Sand			1503	1592			
Shale			1592	1795			
Sand			1795	1844			
Shale			1844	1992			
Lime			1992	2007			
Shale			2007	2038			
Big Lime			2038	2098			
Big Injun			2098	2164			
Total Depth			<u>2195</u>		Gas	2112' - 16'	
with packet logs						2132' - 42'	
31 ft. pocket below sand Big Injun						2147' - 56'	
							logged Gamma Ray neutron A. L. J well Surveys

