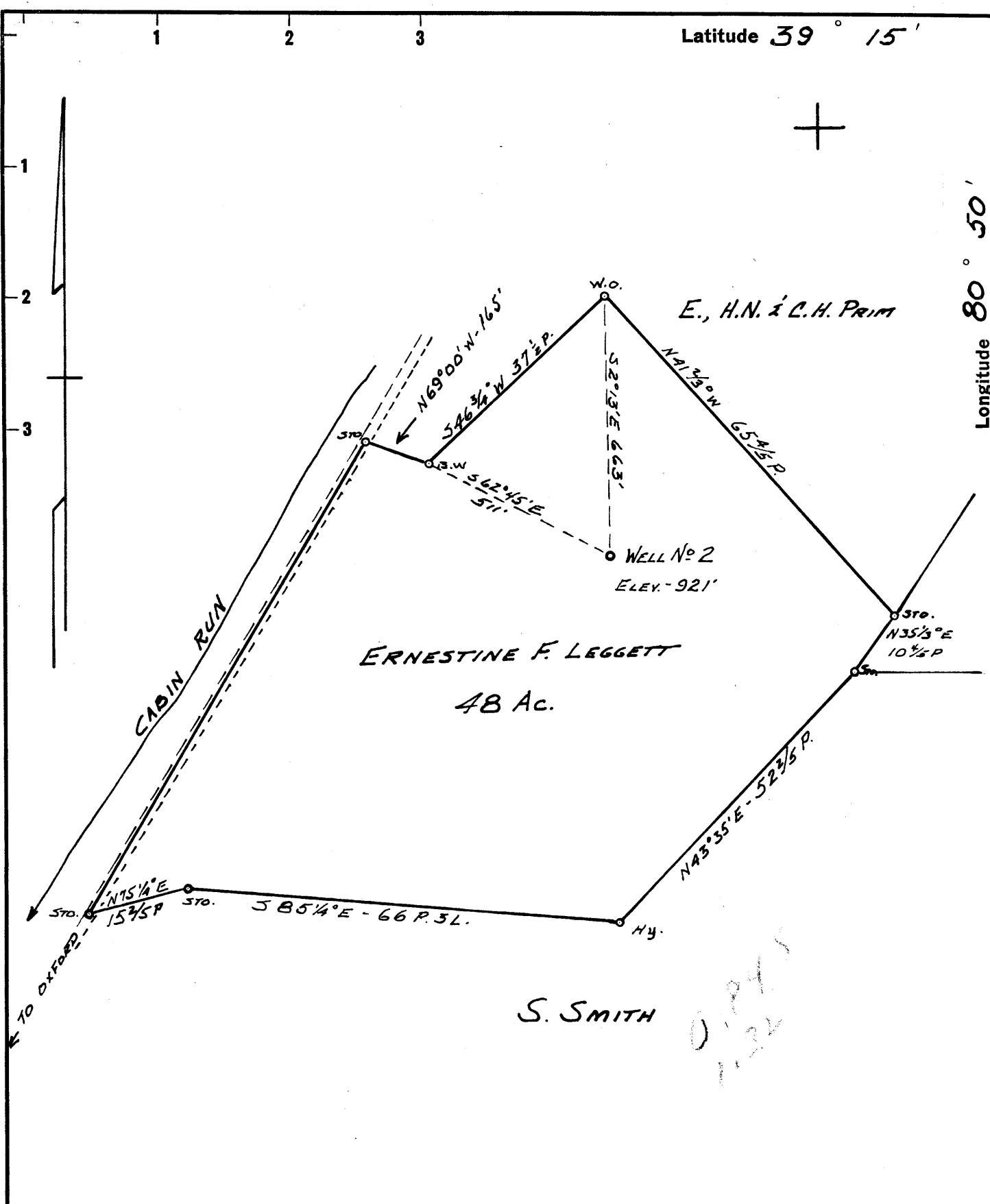


Latitude 39° 15'

Longitude 80° 50'



NOTE:

ALL SURFACE AND MINERAL RIGHTS ARE OWNED BY ERNESTINE F. LEGGETT, RT. 1, WEST UNION, W. VA.

- New Location ..
- Drill Deeper
- Abandonment

Company CHARLES E. BAKER
 Address 213 CHEYBROOK AVE WEST UNION, W. VA.
 Farm ERNESTINE F. LEGGETT
 Tract _____ Acres 48 Lease No. _____
 Well (Farm) No. 2 Serial No. _____
 Elevation (Spirit Level) 921'
 Quadrangle HOLBROOK NC
 County DODDRIDGE District CENTRAL
 Engineer John W. Hamilton
 Engineer's Registration No. 2274
 File No. _____ Drawing No. _____
 Date FEB. 1, 1961 Scale 1" = 20 P

STATE OF WEST VIRGINIA
 DEPARTMENT OF MINES
 OIL AND GAS DIVISION
 CHARLESTON

WELL LOCATION MAP
 FILE NO. DOD-525

+ Denotes location of well on United States Topographic Maps, scale 1 to 62,500, latitude and longitude lines being represented by border lines as shown.

- Denotes one inch spaces on border line of original tracing.

Too Crowded TO PLOT - ON TOP of 507



STATE OF WEST VIRGINIA
DEPARTMENT OF MINES
OIL AND GAS DIVISION 4

Quadrangle West Union W.Va.

Permit No. DOD-525

WELL RECORD

Oil or Gas Well Oil & Gas

Company Baker Development Co.
Address 213 Chevront Ave. West Union W.Va.
Farm Ernestine Ford Leggett Acres 48
Location (waters) Cabin Run
Well No. #2 Elev. 921
District Central County Doddridge
The surface of tract is owned in fee by Ernestine F. Leggett
Address West Union W.Va.
Mineral rights are owned by Ernestine Ford Leggett
West Union Address W.Va.
Drilling commenced March 7 1961
Drilling completed May 6 1961
Date Shot May 8-9-10&23-1961
From schedule attached To
With
Open Flow /10ths Water in Inch
/10ths Merc. in Inch
Volume 165,000 Cu. Ft.
Rock Pressure Negative lbs. hrs.
Oil 18 bbls., 1st 24 hrs.
WELL ACIDIZED
Casing and Tubing
Used in Drilling
Left in Well
Packers
Size
16
13 ft
13 ft
Kind of Packer
Size of
8 1/4
591
6 5/8
1297
1297
Depth set
5 3/16
1865
1805
3
2126
2126
Liners Used
Perf. top
Perf. bottom
Perf. top
Perf. bottom

CASING CEMENTED _____ SIZE _____ No. Ft. _____ Date _____
COAL WAS ENCOUNTERED AT none FEET _____ INCHES
_____ FEET _____ INCHES FEET _____ INCHES
_____ FEET _____ INCHES FEET _____ INCHES
WELL FRACTURED June 13 - 1961 schedule attached

RESULT AFTER TREATMENT Oil & Gas Rock pressure 420 lbs Volume 50/10 1 1/2 h. Water
ROCK PRESSURE AFTER TREATMENT Gas 420 Volume 50/10 Water Oil 18 bbls. 24 hrs.
Fresh Water _____ Feet _____ Salt Water _____ Feet _____

Formation	Color	Hard or Soft	Top	Bottom	Oil, Gas or Water	Depth	Remarks
Red clay		soft	0	12			
clay	red	hard	12	55			
sand	white	sharp	55	92			
slate			92	122			
lime	blue		122	124			
rock	red		124	204			
lime			204	225			
slate			225	300			
rock	red		300	312			
marble stone		hard	312	322			
lime			322	340			
rock	red		340	344			
lime			344	350			
rock	red		350	360			
lime			360	384			
rock	red		384	400			
lime			400	430			
slate	white		430	442			
slate	black		442	444			
lime			444	455			
slate	white		455	461			
lime		hard	461	475			
slate			475	485			
lime			485	505			
rock	red		505	515			
lime	blue		515	530			
rock	red		530	588			
lime	blue		588	600			
lime		broken	600	620			
sand			620	642			

Formation	Color	Hard or Soft	Top ⁴	Bottom	Oil, Gas or Water	Depth Found	Remarks
lime	blue	hard	642	669			
slate		shells	669	720			
lime	white	hard	720	766			
slate		shells	766	785			
rock	red		785	804			
lime			804	855			
lime	red		855	945			
lime	blue		945	977			
slate			977	1000			
sand	dark	hard	1000	1010			
lime	blue	hard	1010	1036			
slate		soft	1036	1060			
sand			1060	1087			
slate			1087	1095			
lime	blue	hard	1095	1130			
slate			1130	1140			
sand	white		1140	1222			
slate	dark		1222	1295			
lime	black		1295	1320			
sand			1320	1350			run 7" pipe
lime		broken	1350	1412			
sand	white		1412	1471			
slate			1471	1480			shows a break at 1450
sand		broken	1480	1500			
slate	white		1500	1523			
sand		hard	1523	1625			
slate	black		1625	1637			water 1560
sand		hard	1637	1648			
lime	black	hard	1648	1690			
sand	white	hard	1690	1707			
lime	black	hard	1707	1743			
slate		shells	1743	1803			
lime	white		1803	1812			5 1/2 pipe set at 1805
lime	black	hard	1812	1850			slate
slate	black		1850	1870			show of oil
sand			1870	1948			
lime	dark	hard	1948	1958			
lime	dark	hard	1958	1996			
break	pencil	cave	1996	2000			
lime	^{BL}	hard	2000	2087			
sand	^{BI}	hard	2087	2131			
slate	light	hard	2131	2183			

Date August 18, 1961

APPROVED Baker Development Co., Owner

By Chas E Baker agt
(Title)