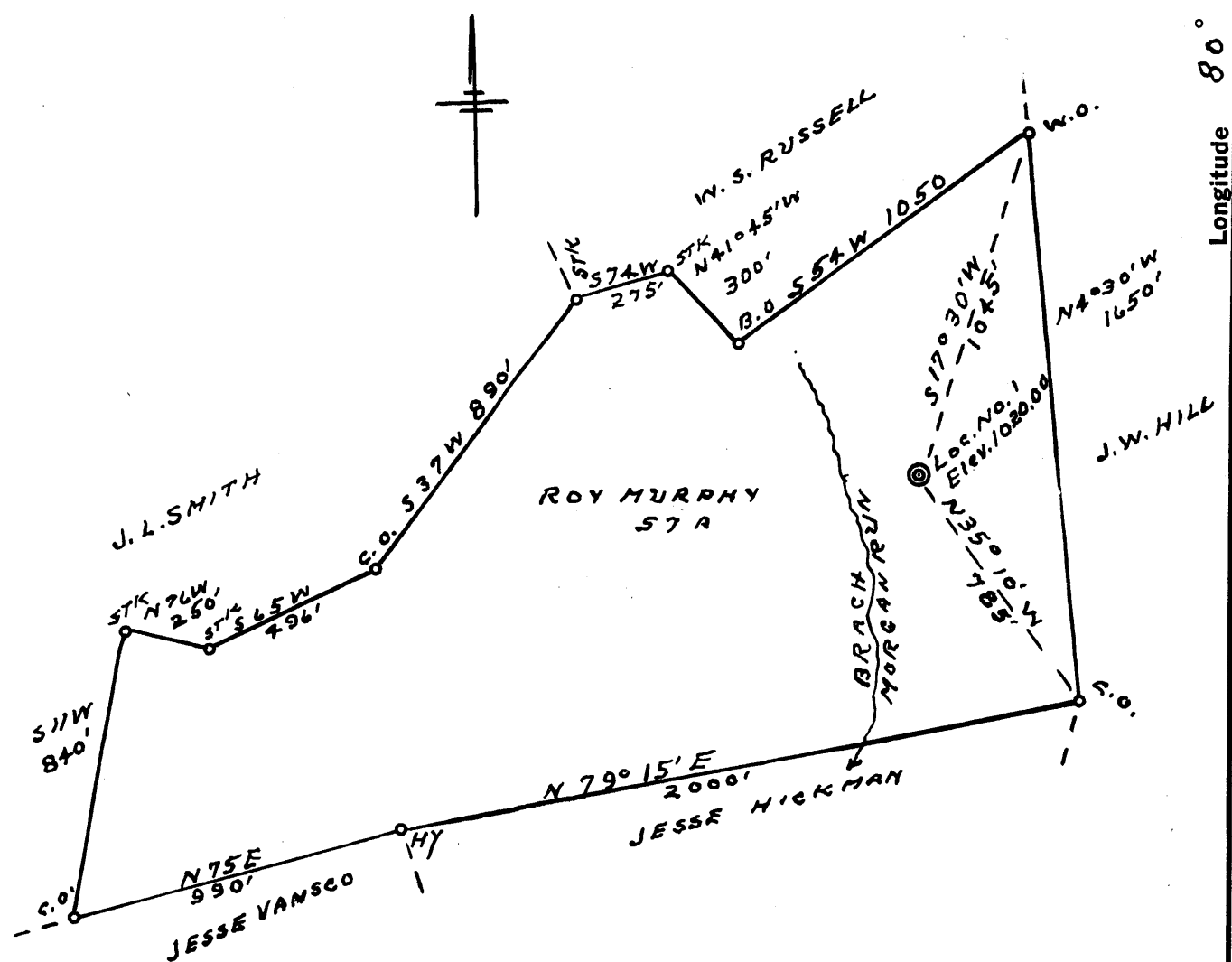


1 2 3

Latitude 39° 20'

1  
2  
3

Longitude 80° 40'



1.505  
0.67

New Location   
 Drill Deeper   
 Abandonment

Company CARL E. SMITH INC.  
 Address SANDYVILLE, W. VA.  
 Farm ROY MURPHY  
 Tract \_\_\_\_\_ Acres 57 Lease No. \_\_\_\_\_  
 Well (Farm) No. 1 Serial No. \_\_\_\_\_  
 Elevation (Spirit Level) 1020.00  
 Quadrangle CENTERPOINT SW  
 County DODDRIDGE District GRANT  
 Engineer G. F. Dye  
 Engineer's Registration No. 804  
 File No. \_\_\_\_\_ Drawing No. \_\_\_\_\_  
 Date 12-2-60 Scale 1" = 500'

STATE OF WEST VIRGINIA  
 DEPARTMENT OF MINES  
 OIL AND GAS DIVISION  
 CHARLESTON

**WELL LOCATION MAP**  
 FILE NO. DOD-508

+ Denotes location of well on United States Topographic Maps, scale 1 to 62,500, latitude and longitude lines being represented by border lines as shown.  
 - Denotes one inch spaces on border line of original tracing.



STATE OF WEST VIRGINIA  
DEPARTMENT OF MINES  
OIL AND GAS DIVISION 4

Quadrangle Centerpoint

Permit No. DOD-508

**WELL RECORD**

Oil or Gas Well none  
(KIND)

Company Carl E. Smith, Inc.  
Address Sandyville, West Virginia  
Farm Roy Murphy Acres 57  
Location (waters) \_\_\_\_\_  
Well No. 1 Elev. 1020.0  
District Grant County Doddridge  
The surface of tract is owned in fee by \_\_\_\_\_  
Address \_\_\_\_\_  
Mineral rights are owned by W. R. Murphy  
Address West Union  
Drilling commenced December 20, 1960  
Drilling completed April 10, 1961  
Date Shot \_\_\_\_\_ From \_\_\_\_\_ To \_\_\_\_\_  
With \_\_\_\_\_  
Open Flow \_\_\_\_\_ /10ths Water in \_\_\_\_\_ Inch  
\_\_\_\_\_ /10ths Merc. in \_\_\_\_\_ Inch  
Volume 15,000 Cu. Ft.  
Rock Pressure 10 lbs. 2 1/2 hrs.  
Oil \_\_\_\_\_ bbls., 1st 24 hrs.  
WELL ACIDIZED \_\_\_\_\_  
WELL FRACTURED yes

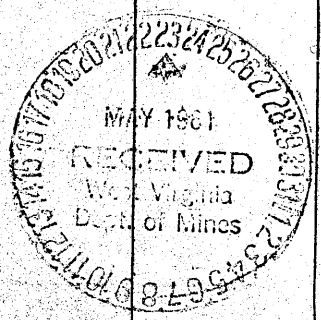
Casing and Tubing	Used in Drilling	Left in Well	Packers
Size			Kind of Packer
16			
13			
10	255'		Size of
8 3/4	1054'		Depth set
6 3/4	1580		
5 3/16	1991		Perf. top
# 4"	2113		Perf. bottom
2			Perf. top
Liners Used			Perf. bottom

CASING CEMENTED 5 SIZE 1991 No. Ft. 3/15/61 Date  
4 2113 4/11/61  
*Prussner Cementing Co.*

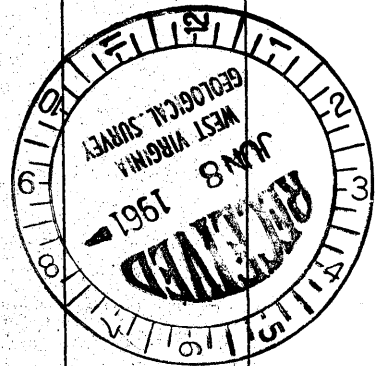
COAL WAS ENCOUNTERED AT \_\_\_\_\_ FEET \_\_\_\_\_ INCHES  
\_\_\_\_\_ FEET \_\_\_\_\_ INCHES \_\_\_\_\_ FEET \_\_\_\_\_ INCHES  
\_\_\_\_\_ FEET \_\_\_\_\_ INCHES \_\_\_\_\_ FEET \_\_\_\_\_ INCHES

RESULT AFTER TREATMENT 0  
ROCK PRESSURE AFTER TREATMENT 0  
Fresh Water 912 Feet 1535 Salt Water \_\_\_\_\_ Feet

Formation	Color	Hard or Soft	Top	Bottom	Oil, Gas or Water	Depth	Remarks
Surface			0	6			
Sand	yellow		6	47			
Slate			47	51			
Sand			51	60			
Red Rock	Red		60	69			
Slate & Shells			69	97			
Slate	Black		97	111			
Lime & Shell			111	137			
Slate			137	142			
Lime Shells			142	180			
Rock	Red		180	195			
Lime Shell			195	312			
Sand			312	330			
Slate			330	346			
Sand			346	351			
Slate			351	357			
Lime			357	418			
Slate			418	423			
Rock	Red		423	427			
Slate			427	442			
Lime			442	500			
Slate			500	525			
Lime			525	545			
Slate			545	549			
Rock	Red		549	553			
Slate			553	574			
Slate & Shell			574	603			
Shell Lime			603	611			
Slate			611	621			
Lime			621	672			



Formation	Color	Hard or Soft	Top 4	Bottom	Oil, Gas or Water	Depth Found	Remarks
Sand			672	685			
Lime			685	705			
Shell			705	710			
Rock	Red		710	738			
Slate & Shell			738	745			
Lime			745	752			
Sand			752	782			
Slate & Shells			782	804			
Shell			804	812			
Lime			812	845			
Slate			845	851			
Rock	Red		851	857			
Slate			857	870			
Lime			870	876			
Slate			876	912	water	912	
Lime			912	998			
Sand			998	1006			
Lime			1006	1029			
Shell			1029	1032			
Slate			1032	1042			
Rock	Red		1042	1048			
Slate			1048	1051			
Rock	Red		1051	1054			
Lime			1054	1105			
Slate			1105	1130			
Lime			1130	1145			
Shell			1145	1152			
Lime			1152	1165			
Slate			1165	1174			
Rock	Red		1174	1186			
Lime & Shell			1186	1226			
Slate			1226	1251			
Lime			1251	1260			
Slate			1260	1265			
Sand			1265	1355			
Slate	White		1355	1378			
Slate	Black		1378	1400			
Lime & Shell			1400	1422			
Slate			1422	1430			
Lime			1430	1434			
Slate			1434	1445			
Salt Sand			1445	1591	Water	1535	
Lime	Black		1591	1657	gas	1556	
Sand			1657	1745			
Slate			1745	1756			
Lime			1756	1798	gas	1897	
Maxim Sand			1798	1820			
Lime	Black		1820	1958			
Big Lime			1958	2045			
Slate			2045	2046			
Keener			2046	2080			
Big Injin			2080	2132			
Slate			2132	2136			



Date May 23, 19 61

APPROVED Carl E. Smith, Inc., Owner

By Carl Smith (Title) President