

Well Location   
 Drill Deeper   
 Redrill   
 Abandonment  issued 10-6-69

Company ATHENS OIL AND GAS COMPANY  
 Address General Delivery, West Union, West Va.  
 Farm Ward I. Leggett  
 Tract \_\_\_\_\_ Acres 70 Lease No. \_\_\_\_\_  
 Well (Farm) No. Three Serial No. \_\_\_\_\_  
 Elevation (Spirit Level) 963'  
 Quadrangle West Union SW  
 County Doddridge District Central  
 Engineer Richard E. Johnson  
 Engineer's Registration No. 1727  
 File No. \_\_\_\_\_ Drawing No. \_\_\_\_\_  
 Date Oct 28, 1960 Scale 1" = 400'

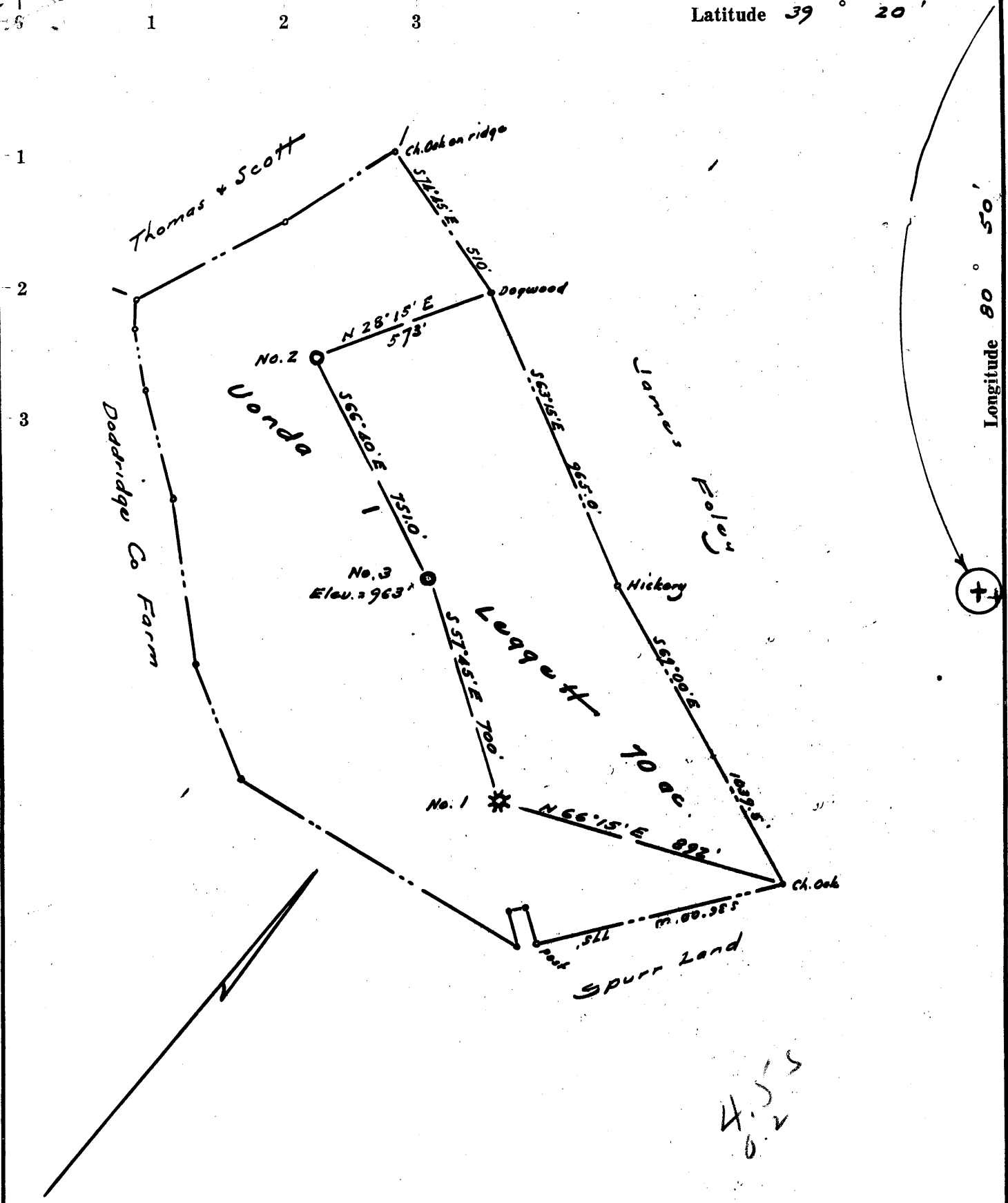
STATE OF WEST VIRGINIA  
 DEPARTMENT OF MINES  
 OIL AND GAS DIVISION  
 CHARLESTON

WELL LOCATION MAP  
 FILE NO. 000-492-P  
 plugged 1969

+ Denotes location of well on United States Topographic Maps, scale 1 to 62,500, latitude and longitude lines being represented by border lines as shown.  
 — Denotes one inch spaces on border line of original tracing.

Latitude 39 ° 20 '

Longitude 80 ° 50 '



4.55  
0.2

- New Location.
- Drill Deeper. ....
- Redrill .....
- Abandonment .....

Company: ATHENS OIL AND GAS COMPANY  
 Address: General Delivery, West Union, West Va.  
 Farm: Yonda I. Leggett  
 Tract \_\_\_\_\_ Acres 70 Lease No. \_\_\_\_\_  
 Well (Farm) No. Three Serial No. \_\_\_\_\_  
 Elevation (Spirit Level) 963'  
 Quadrangle West Union 5C  
 County Doddridge District Central  
 Engineer W. S. Jones  
 Engineer's Registration No. 1227  
 File No. \_\_\_\_\_ Drawing No. \_\_\_\_\_  
 Date Oct 28, 1960 Scale 1" = 400'

STATE OF WEST VIRGINIA  
 DEPARTMENT OF MINES  
 OIL AND GAS DIVISION  
 CHARLESTON

**WELL LOCATION MAP**  
 FILE NO. DOB-492

+ Denotes location of well on United States Topographic Maps, scale 1 to 62,500, latitude and longitude lines being represented by border lines as shown.

— Denotes one inch spaces on border line of original tracing.

6-0 87



STATE OF WEST VIRGINIA  
DEPARTMENT OF MINES  
OIL AND GAS DIVISION

Quadrangle West Union

Permit No. DOD-492

**WELL RECORD**

Oil or Gas Well Both  
(KIND)

Company Athens Oil & Gas Co.  
Address Box 116, West Union  
Farm Vonda T. Leggett Acres 70  
Location (waters) Claylick Run  
Well No. 3 Elev. 963'  
District Central County Doddridge  
The surface of tract is owned in fee by Vonda Leggett  
Address Parkersburg, W. Va.  
Mineral rights are owned by Same  
Address \_\_\_\_\_  
Drilling commenced 11/1/60 (Rotary)  
Drilling completed 11/8/60  
Date Shot \_\_\_\_\_ From \_\_\_\_\_ To \_\_\_\_\_  
With \_\_\_\_\_  
Open Flow \_\_\_\_\_ /10ths Water in \_\_\_\_\_ Inch  
\_\_\_\_\_ /10ths Merc. in \_\_\_\_\_ Inch  
Volume \_\_\_\_\_ Cu. Ft.  
Rock Pressure \_\_\_\_\_ lbs. \_\_\_\_\_ hrs.  
Oil \_\_\_\_\_ bbls., 1st 24 hrs.  
WELL ACIDIZED \_\_\_\_\_  
WELL FRACTURED 12/6/60 500 bbl water & 20,000# sand

Casing and Tubing	Used in Drilling	Left in Well	Packers
Size			Kind of Packer
16			
13			Size of
10			Depth set
8 5/8"	30'	30'	Perf. top <u>2058'</u>
6 3/4"			Perf. bottom <u>2078'</u>
5 1/2"		2116'	Perf. top _____
3			Perf. bottom _____
2			
Liners Used			

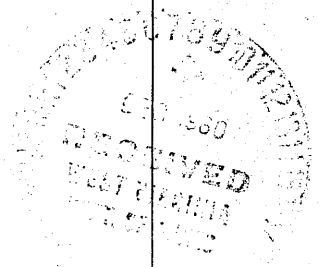
CASING CEMENTED 5 1/2" SIZE 2116 No. Ft. 11/9/60 Date  
25 sks cement - hole left full drilling/  
Garaton Well Service  
COAL WAS ENCOUNTERED AT none FEET INCHES  
FEET INCHES FEET INCHES  
FEET INCHES FEET INCHES

RESULT AFTER TREATMENT Not taken

ROCK PRESSURE AFTER TREATMENT \_\_\_\_\_

Fresh Water \_\_\_\_\_ Feet Salt Water \_\_\_\_\_ Feet

Formation	Color	Hard or Soft	Top	Bottom	Oil, Gas or Water	Depth	Remarks
Soil, Sand & Shale			0'	1750'			
Sand			1750'	1790'			
Shale			1790'	1796'			
Sand			1796'	1812'			
Sandy Shale			1812'	1925'			
Lime (Little Lime)			1925'	1940'			
Lime & Shale			1940'	1970'			
Lime (Big Lime)			1970'	2048'			
Sand (Big Injun)			2048'	2097'			
Shale			2097'	2114'			
Total Depth				2114'			
							Logged - Gamma Ray-Neutron (Birdwell)



By: *Chet Waterman*

CHET WATERMAN  
PETROLEUM CONSULTANT

(over)

P. O. BOX 532  
PARKERSBURG, W. VA.