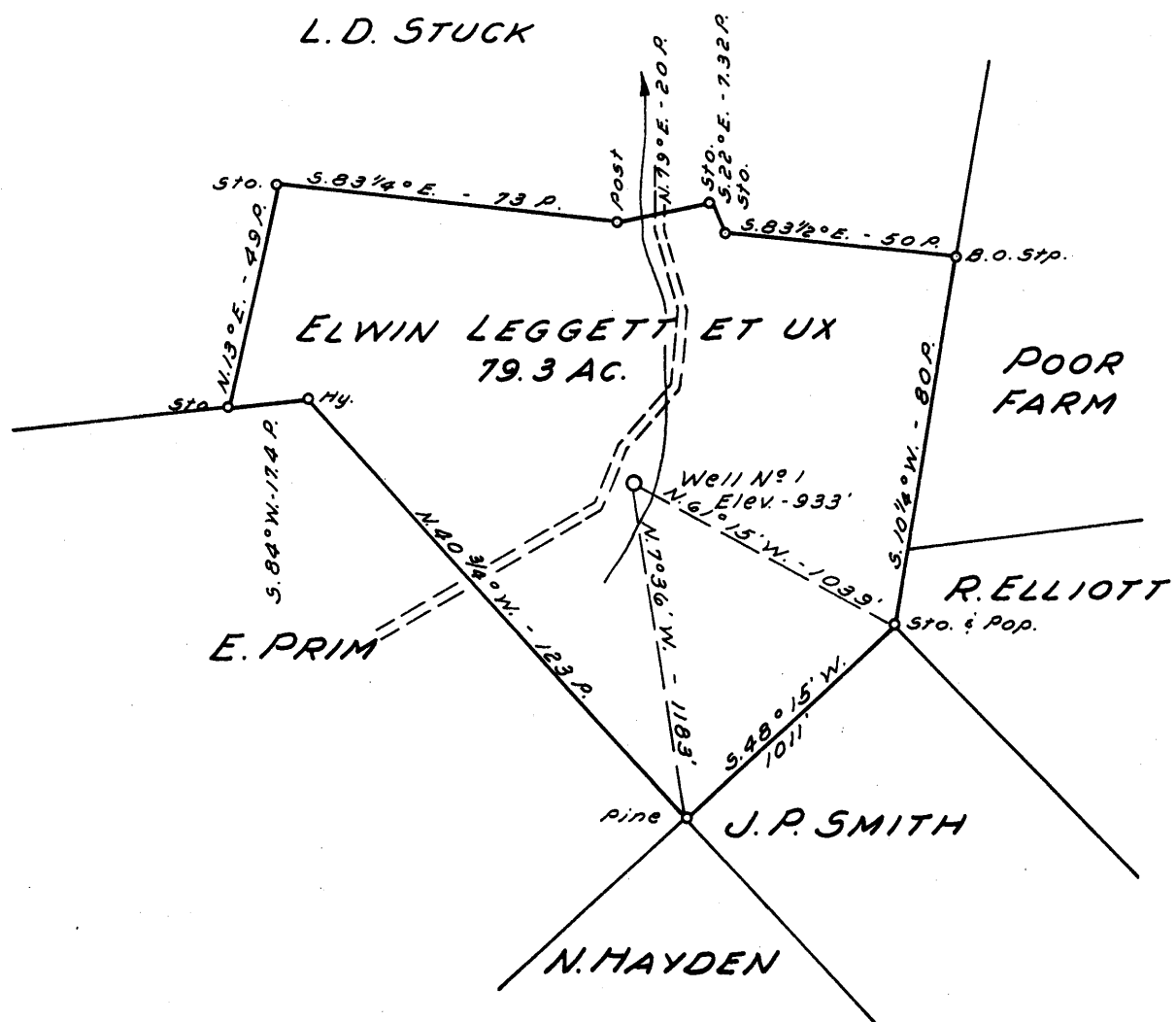


M

P

Latitude 39° 20'

Longitude 80° 50'



New Location
 Drill Deeper
 Abandonment

NOTE:
 Elwin Leggett et ux owns in Fee.

262
 57213
 0.46

Company SUNNYSIDE OIL & GAS CO.
 Address 916 CLARENCE POWELL, AGT. WEST UNION, W. VA.
 Farm ELWIN LEGGETT ET UX
 Tract _____ Acres 79.3 Lease No. _____
 Well (Farm) No. 1 Serial No. _____
 Elevation (Spirit Level) 933'
 Quadrangle WEST UNION S.C.
 County DODDRIDGE District CENTRAL
 Engineer JOHN W. HAMILTON
 Engineer's Registration No. 2274
 File No. _____ Drawing No. _____
 Date SEPT. 3, 1960 Scale 1" = 40 POLES

STATE OF WEST VIRGINIA
 DEPARTMENT OF MINES
 OIL AND GAS DIVISION
 CHARLESTON

WELL LOCATION MAP
 FILE NO. DoD-463

+ Denotes location of well on United States Topographic Maps, scale 1 to 62,500, latitude and longitude lines being represented by border lines as shown.

- Denotes one inch spaces on border line of original tracing.



STATE OF WEST VIRGINIA
DEPARTMENT OF MINES
OIL AND GAS DIVISION

Quadrangle West Union

Permit No. DOD 463#

WELL RECORD

Oil or Gas Well Gas & Oil
(KIND)

Company Sunnyside Oil & Gas Company
Address West Union, W. Va.
Farm Elwin Leggett Acres 79.3
Location (waters) _____
Well No. 1 Elev. 933'
District Central County Doddridge
The surface of tract is owned in fee by _____
Elwin Leggett Address West Union, W. Va.
Mineral rights are owned by Elwin Leggett &
Rose heirs Address West Union, W. V.
Drilling commenced Nov. 17th 1960
Drilling completed Jan. 15th 1961
Date Shot _____ From _____ To _____
With _____
Open Flow 9/10ths Water in _____ 2" Inch
_____ /10ths Merc. in _____ Inch
Volume 31,000 Cu. Ft.
Rock Pressure 460 lbs. 12 hrs.
Oil 1/2 bbls., 1st 24 hrs.
WELL ACIDIZED _____

Casing and Tubing	Used in Drilling	Left in Well	Packers
Size			Kind of Packer _____
16			
13			Size of _____
10	<u>144'</u>		
8 3/4	<u>646'</u>		Depth set _____
6 3/4	<u>1180'</u>		
5 3/16	<u>1993'</u>	<u>1993'</u>	Perf. top _____
3			Perf. bottom _____
2 Tubing		<u>2211'</u>	Perf. top _____
Liners Used			Perf. bottom _____

CASING CEMENTED 5-1/2 SIZE No. Ft. 1/4/61 Date
Garaton Service, Inc.
10 sks. Cement - 6 sks. Aquagel
COAL WAS ENCOUNTERED AT NO FEET _____ INCHES
_____ FEET _____ INCHES FEET _____ INCHES
_____ FEET _____ INCHES FEET _____ INCHES

WELL FRACTURED Feb. 9, 1961 Used 800 BBL water & 200 gal mud acid

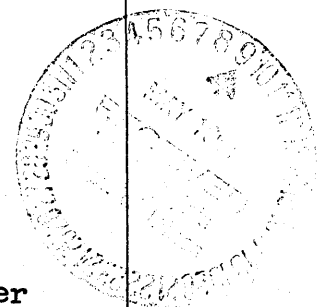
RESULT AFTER TREATMENT 15 BBL oil per. day --- 120,000 cu. ft. gas per day

ROCK PRESSURE AFTER TREATMENT 500# 24 Hours

Fresh Water _____ Feet _____ Salt Water _____ Feet _____

Formation	Color	Hard or Soft	Top	Bottom	Oil, Gas or Water	Depth	Remarks
Red Rock			0	50			
Sand			50	75			
Slate			75	90			
Red Rock			90	130			
Slate			130	260			
Red Rock			260	290			
Slate			290	380			
Red Rock			380	440			
Sand			440	470			
Slate			470	482			
Sand			482	490			
Slate			490	571			
Sand			571	642			
Slate			642	710			
Lime			710	835			
Red Rock			835	998			
Sand			998	1017			
Slate			1017	1115			
Black Slate	Black		1115	1154			
Sand	Grey		1154	1181			
Slate & Shells			1181	1265			
Sand			1265	1314			
Slate			1314	1358			
Sand			1358	1408			
Slate & Shells			1408	1512			
Sand			1512	1550			
Sand			1550	1618			
Slate			1618	1638			
Sand			1638	1668			

Little water



Formation	Color	Hard or Soft	Top /	Bottom	Oil, Gas or Water	Depth Found	Remarks
Slate	Grey		1668	1707			
Sand			1707	1722			
Slate	Black		1722	1730			
Slate	Grey		1730	1754			
Sand			1754	1760			
Slate			1760	1814			
Slate	Black		1814	1850			
Lime		Gritty	1850	1869			
Sand			1869	1884			
Slate			1884	1900			
Sand			1900	1914			
Slate			1914	1935			
Red Rock	Red		1935	1939			
Lime		Broken	1939	1947			
Lime			1947	1957			
Lime			1957	1981			
Shale			1981	1983			
Lime (Big)			1983	2075			
Sand (Injun)			2075	2134	Oil	2079	
					Oil	2092	
					Oil	2118	
			2134	2150	Total depth		