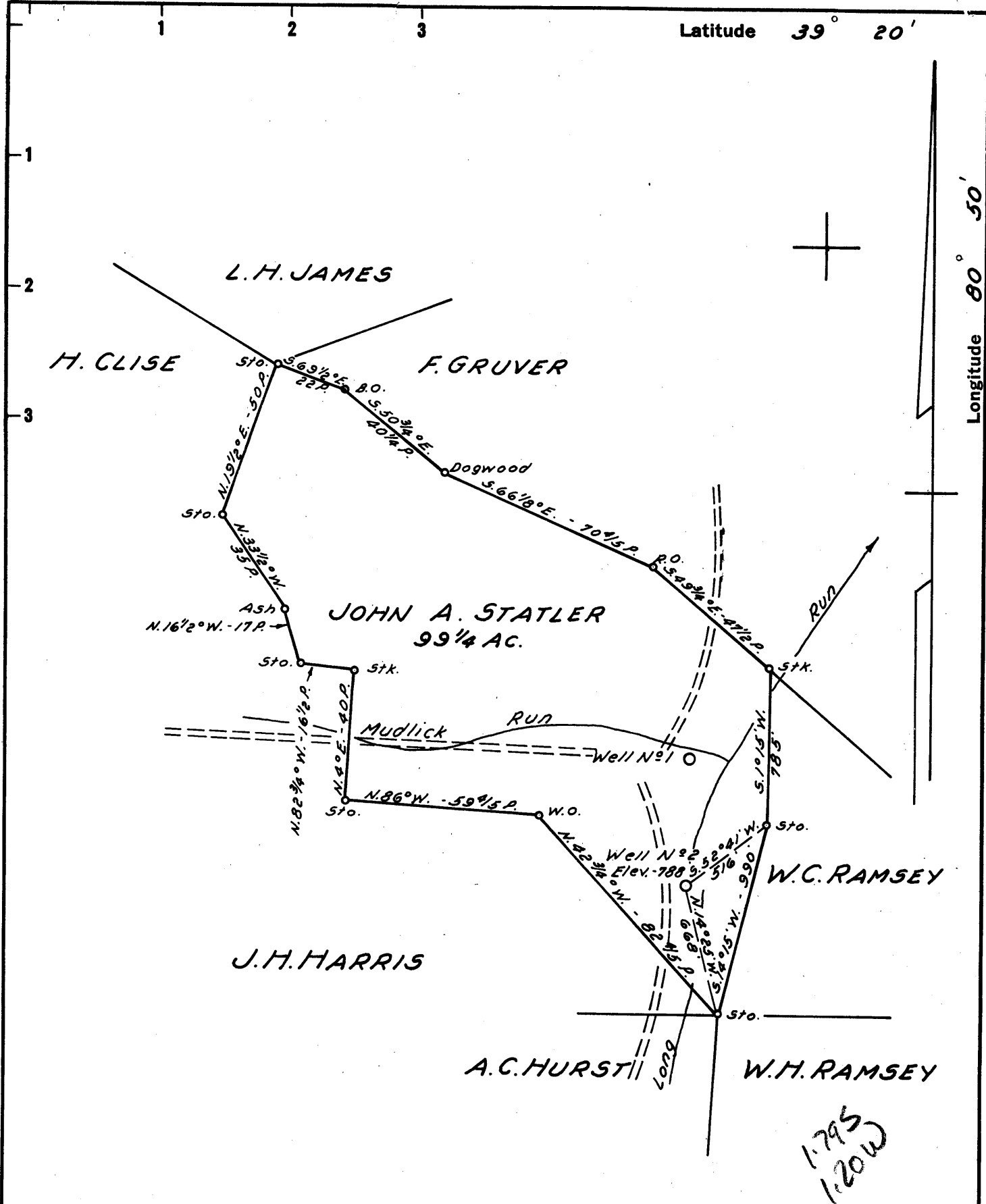


Latitude 39° 20'

Longitude 80° 50'



New Location   
 Drill Deeper   
 Abandonment

NOTE: John A. Statler owns the Oil & Gas Rights.

Company ROME DAUGHERTY  
 Address P.O. BOX 184, MARIETTA, OHIO  
 Farm JOHN A. STATLER  
 Tract \_\_\_\_\_ Acres 99 1/4 Lease No. \_\_\_\_\_  
 Well (Farm) No. 2 Serial No. \_\_\_\_\_  
 Elevation (Spirit Level) 788'  
 Quadrangle WEST UNION SC  
 County DODDRIDGE District CENTRAL  
 Engineer JOHN W. HAMILTON  
 Engineer's Registration No. 2274  
 File No. \_\_\_\_\_ Drawing No. \_\_\_\_\_  
 Date AUG. 13, 1960 Scale 1" = 40 POLES

STATE OF WEST VIRGINIA  
 DEPARTMENT OF MINES  
 OIL AND GAS DIVISION  
 CHARLESTON

**WELL LOCATION MAP**  
 FILE NO. DOD 448

+ Denotes location of well on United States Topographic Maps, scale 1 to 62,500, latitude and longitude lines being represented by border lines as shown.

- Denotes one inch spaces on border line of original tracing.