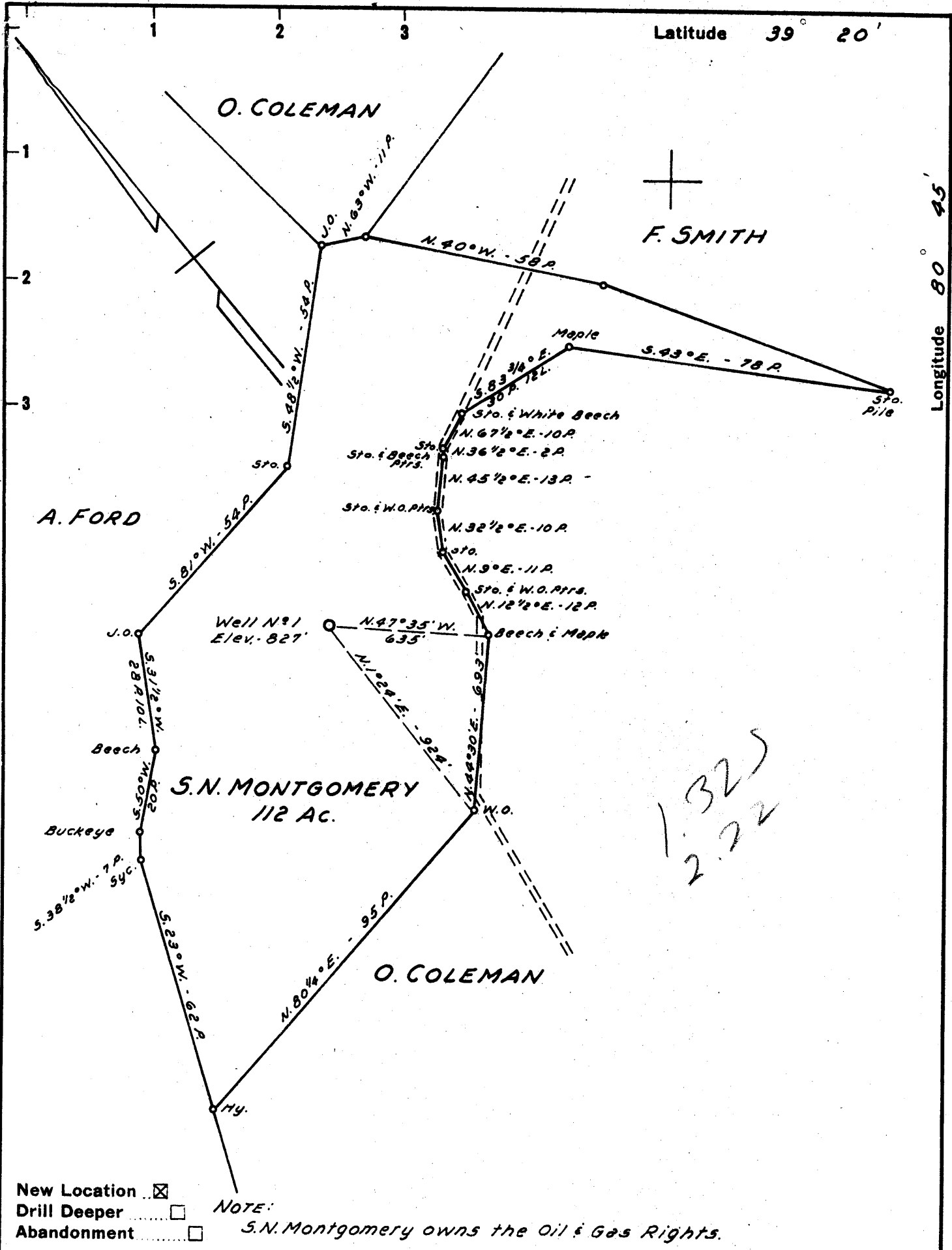


Latitude 39° 20'

Longitude 80° 45'



- New Location
- Drill Deeper
- Abandonment

Company CHARTER STINESPRING, TRUSTEE

Address WEST UNION, W. VA.

Farm S.N. MONTGOMERY

Tract \_\_\_\_\_ Acres 112 Lease No. \_\_\_\_\_

Well (Farm) No. 1 Serial No. \_\_\_\_\_

Elevation (Spirit Level) 827'

Quadrangle WEST UNION SE

County DODDRIDGE District WEST UNION

Engineer JOHN W. HAMILTON

Engineer's Registration No. 2274

File No. \_\_\_\_\_ Drawing No. \_\_\_\_\_

Date AUG. 11, 1960 Scale 1" = 30 POLES

STATE OF WEST VIRGINIA  
DEPARTMENT OF MINES  
OIL AND GAS DIVISION  
CHARLESTON

**WELL LOCATION MAP**  
FILE NO. DOD-446

+ Denotes location of well on United States Topographic Maps, scale 1 to 62,500, latitude and longitude lines being represented by border lines as shown.

- Denotes one inch spaces on border line of original tracing.



STATE OF WEST VIRGINIA  
DEPARTMENT OF MINES  
OIL AND GAS DIVISION 8

Quadrangle West Union

Permit No. DOD 446

WELL RECORD

Oil or Gas Well Combinator  
(KIND)

Company Trio Oil and Gas Co  
Address West Union, West Va.  
Farm Nelson Montgomery Acres 112  
Location (waters) Middle Island Creek  
Well No. #1 Elev. 827'  
District West Union County Doddridge  
The surface of tract is owned in fee by Donald Stuart  
Address West Union, W. Va.  
Mineral rights are owned by Nelson Montgomery  
Address Renick, West Va.  
Drilling commenced August 19th, 1960  
Drilling completed September 19th, 1960  
Date Shot From To  
With  
Open Flow 1.20ths Water in 1 Inch  
20ths Merc. in 2 Inch  
Volume 36000 Cu. Ft.  
Rock Pressure 640 lbs. 24 hrs.  
Oil 2 bbls., 1st 24 hrs.  
WELL ACIDIZED

Casing and Tubing	Used in Drilling	Left in Well	Packers
Size			Kind of Packer
16			
13			
10	308'	none	Size of
8 1/4	1005'	none	
6 5/8			Depth set
5 3/16	1827"	all	
3			Perf. top
2			Perf. bottom
Liners Used			Perf. top
			Perf. bottom

WELL FRACTURED 9/21/60 42,000# sand 1000 bbl water

RESULT AFTER TREATMENT 2.2/10ths mercury through 2inch ± 800,000

ROCK PRESSURE AFTER TREATMENT 640#

Fresh Water Feet Salt Water Feet

Formation	Color	Hard or Soft	Top	Bottom	Oil, Gas or Water	Depth	Remarks
Clay			0	20		20	
Red Rock			20	40		20	
White Slate			40	80		40	
Red Rock			80	120		40	
Sand			120	140		20	
Red Rock			140	155		15	
White Slate			155	210		55	
Lime Shell			210	238		28	
Slate			238	250		12	
Lime			250	288		38	
Red Rock			288	290		2	
Slate & Shells			290	310		20	
Red Rock			310	370		60	
Shale			370	390		20	
Sand			390	420		30	
White Slate			420	440		20	
Red Rock			440	480		40	
Slate & Shell			480	500		20	
Lime			500	522		22	
Shale			522	540		18	
Slate & Shell			540	600		60	
Red Rock			600	660		60	
Shale			660	690		30	
Red Rock			690	715		25	
Lime Gritty			715	770		55	
White Slate			770	785		15	
Sand			785	800		15	
Red Rock			800	840		40	
Slate & Shells			840	895		55	
Shale			895	940		45	

(over)

Formation	Color	Hard or Soft	Top $\delta$	Bottom	Oil, Gas or Water	Depth Found	Remarks
Sand			940	960		20	
White Slate			960	975		15	
B.Slate			975	998		23	
Sand			998	1014		16	
W.Slate			1014	1020		6	
Sand			1020	1030		10	
Shale			1030	1050		20	
Sand			1050	1060		10	
Lime			1060	1095		35	
Sand			1095	1120		25	
Lime			1120	1135		15	
Sand			1135	1185		50	
B.Slate			1185	1260		75	
Shale & Shells			1260	1280		20	
Lime			1280	1295		15	
Sand			1295	1410		115	
B.Slate			1410	1490		80	
Shale			1505	1515		10	
Sand			1515	1550		35	
Shale			1550	1555		5	
Sand			1555	1642		87	
Maxon Sand			1642	1685		43	
Lime			1685	1705		20	
Shale			1705	1720		15	
Lime			1720	1730		10	
Shale			1730	1755		25	
Big Lime			1755	1850		95	
Sand			1850	1892		42	
Brake			1892	1900		8	
Sand			1900	1954		54	