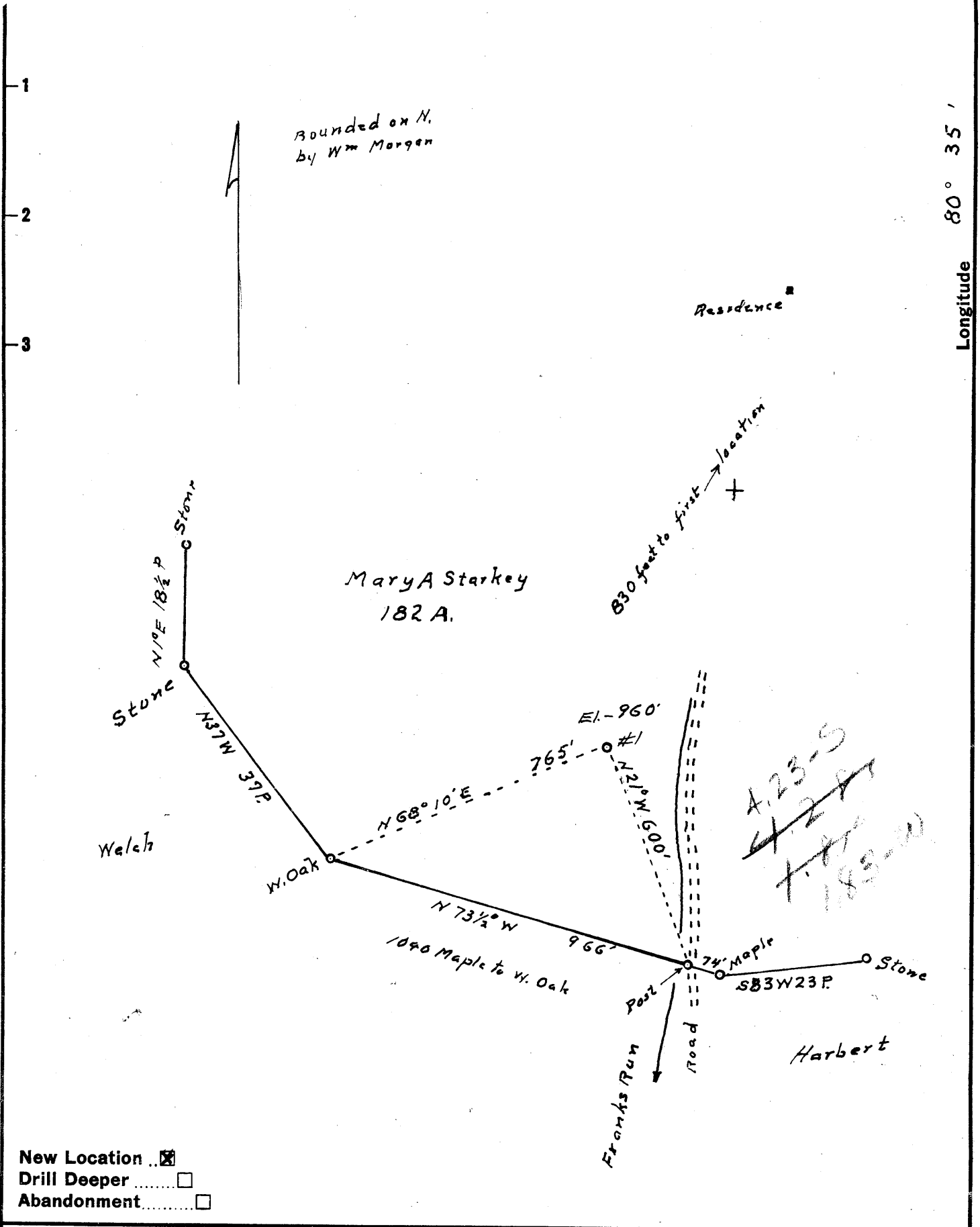


Latitude 39° 30'

Longitude 80° 35'



Company Manning and Farbes
 Address 318 Continental Bldg Denver Colo.
 Farm Mary A. Starkey
 Tract _____ Acres 182 Lease No. _____
 Well (Farm) No. 1 Serial No. _____
 Elevation (Spirit Level) 960
 Quadrangle Centerpoint NC
 County Doddridge District McClellan
 Engineer Robert P. Anderson
 Engineer's Registration No. _____
 File No. _____ Drawing No. 296
 Date Sept 25 1960 Scale 1 in = 20 Poles

STATE OF WEST VIRGINIA
 DEPARTMENT OF MINES
 OIL AND GAS DIVISION
 CHARLESTON

WELL LOCATION MAP

FILE NO. DOD-443-REVISED
 Revised location

+ Denotes location of well on United States Topographic Maps, scale 1 to 62,500, latitude and longitude lines being represented by border lines as shown.

- Denotes one inch spaces on border line of original tracing.

6-1-1



STATE OF WEST VIRGINIA
DEPARTMENT OF MINES
OIL AND GAS DIVISION 4

Quadrangle Centerpoint

Permit No. DOD-443 Revised

WELL RECORD

Oil or Gas Well Dry
(KIND)

Company Manning and Forbes
Address 318 Continental Building, Denver 2, Colo.
Farm Mary A. Starkey Acres 182
Location (waters) Franks Run
Well No. 1 Elev. 960
District McClellan County Doddridge
The surface of tract is owned in fee by Ormond Starkey
Address Centerpoint
Mineral rights are owned by Same
Address _____
Drilling commenced October 8, 1960
Drilling completed January 8, 1961
Date Shot _____ From _____ To _____
With _____
Open Flow /10ths Water in show Inch _____
/10ths Merc. in _____ Inch _____
Volume _____ Cu. Ft. _____
Rock Pressure _____ lbs. _____ hrs. _____
Oil show bbls., 1st 24 hrs. _____
WELL ACIDIZED _____
WELL FRACTURED 1-16-61 300 bbls. water

Casing and Tubing	Used in Drilling	Left in Well	Packers
Size			Kind of Packer _____
16			
13			
10	328	pulled	Size of _____
8 3/4	1242	pulled	
7	2065	pulled	Depth set _____
5 3/16	2180	80'	
3			Perf. top <u>2135</u>
2			Perf. bottom <u>2136</u>
Liners Used			Perf. top _____
			Perf. bottom _____

CASING CEMENTED 5 3/16 SIZE 20 sacks 1-11-61 Date
No. Ft. _____
gelled to surface by Halliburton

COAL WAS ENCOUNTERED AT _____ FEET _____ INCHES
_____ FEET _____ INCHES _____ FEET _____ INCHES
_____ FEET _____ INCHES _____ FEET _____ INCHES

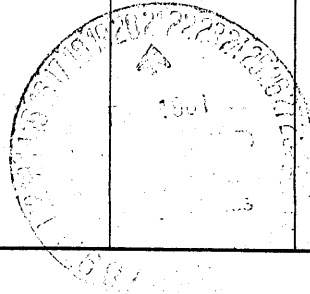
WELL FRACTURED 1-16-61 300 bbls. water 7000 # sand

RESULT AFTER TREATMENT no improvement in volume

ROCK PRESSURE AFTER TREATMENT _____

Fresh Water _____ Feet _____ Salt Water _____ Feet _____

Formation	Color	Hard or Soft	Top	Bottom	Oil, Gas or Water	Depth	Remarks
Slate			26	36			
Red Rock			36	60			
Slate			60	115	water	60	
Lime			115	131			
Slate & Shell			131	160			
Lime			160	170			
Black Slate			170	175			
Slate & Shell			175	209			
Lime			209	230			
Slate & Shell			230	272			
Red Rock			272	282			
Slate & Shell			282	449			
Lime			449	573			
Slate & Shell			573	615			
Lime			615	680			
Slate & Shell			680	830			
Red Rock			830	943			
Slate & Shell			943	1020			
Red Rock			1020	1038			
Gritty Lime			1038	1089			
Slate & Shell			1089	1103			
Black Slate			1103	1125			
White Slate			1125	1134			
Sand			1134	1160			
Black Slate			1160	1200			
White Slate			1200	1235			
Sand			1235	1350			
Slate			1350	1400			
Sand			1400	1430			



Formation	Color	Hard or Soft	Top 4	Bottom	Oil, Gas or Water	Depth Found	Remarks
Slate			1430	1502			
Sand			1502	1547			
Slate			1547	1585			
Sand			1585	1650			
Black Slate			1650	1750			
Sand			1750	1775			
Slate			1775	1800			
Red Rock			1800	1823			
Lime			1823	1838			
Red Rock			1838	1864	1973		
Lime			1864	1885	960		
Red Rock			1885	1900	753		
Lime			1900	1916			
Slate			1916	1940			
Lime			1940	1953			
Slate			1953	1973			
Big Lime			1973	2043			
Injun Sand			2043	2209	Gas	2135-2140	
Slate			2209	2339	Oil	2140-2145	
Sand			2339	2360			
Lime			2360	2369			
Slate			2369	2563			
Siltstone			2563	2582			
Slate & Shell			2582	2755			
Red Rock			2755	2760			
Slate & Shell			2760	2770			
Siltstone			2770	2795			
Slate & Shell			2795	3171			
TOTAL DEPTH				3171			