

- New Location
- Drill Deeper
- Abandonment

NOTE:

John A. Statler owns the Oil & Gas Rights.

Company	ROME DAUGHERTY
Address	P.O. BOX 184, MARIETTA, OHIO
Farm	JOHN A. STATLER
Tract	Acres 99 1/4 Lease No.
Well (Farm) No.	1 Serial No.
Elevation (Spirit Level)	788'
Quadrangle	WEST UNION SC
County	DODDRIDGE District CENTRAL
Engineer	JOHN W. HAMILTON
Engineer's Registration No.	2274
File No.	Drawing No.
Date	JULY 23, 1960 Scale 1" = 40 POLES

STATE OF WEST VIRGINIA
DEPARTMENT OF MINES
OIL AND GAS DIVISION
CHARLESTON

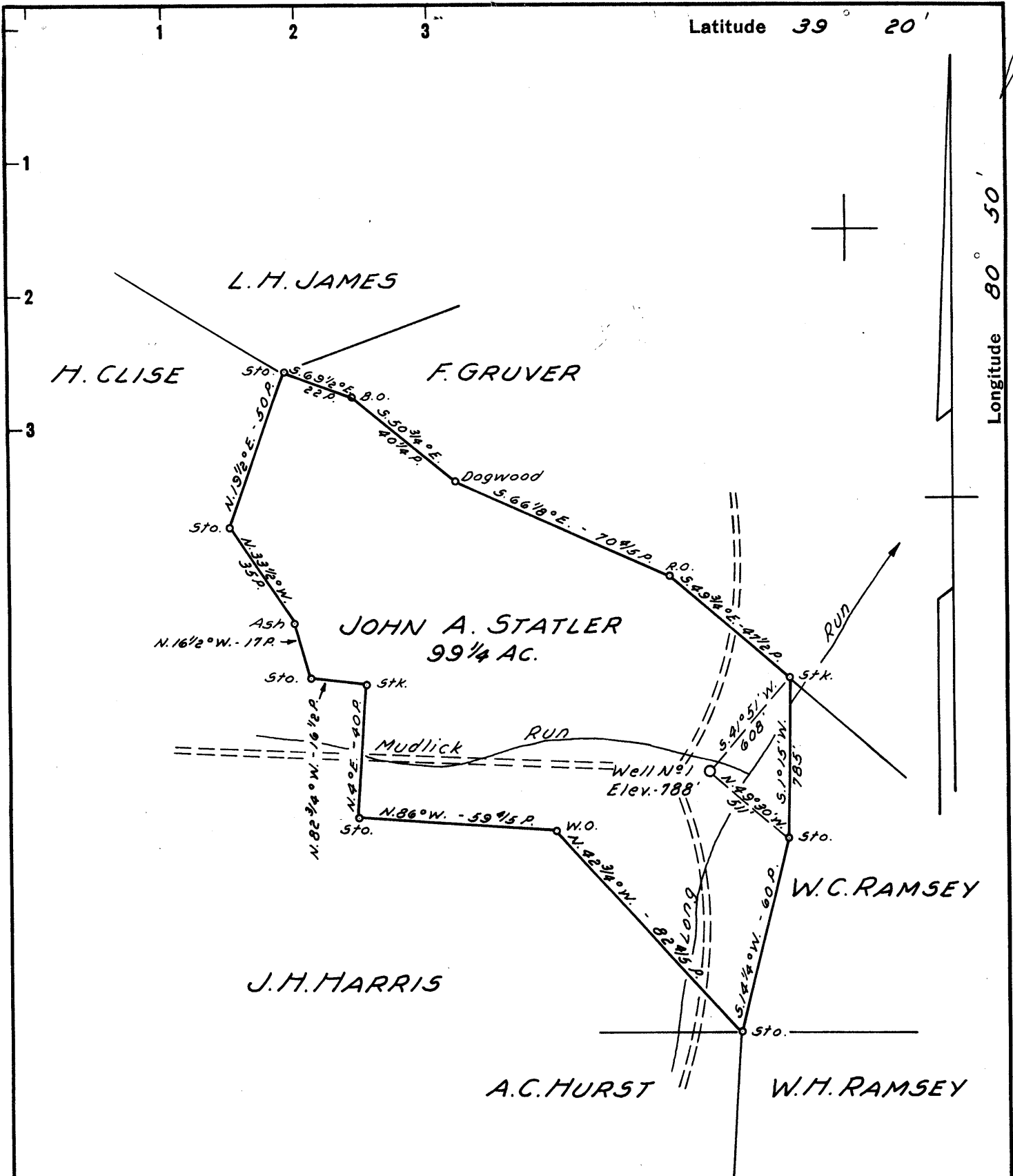
WELL LOCATION MAP

FILE NO. DOD-429

CANCELLED

+ Denotes location of well on United States Topographic Maps, scale 1 to 62,500, latitude and longitude lines being represented by border lines as shown.

- Denotes one inch spaces on border line of original tracing.



New Location
 Drill Deeper
 Abandonment

NOTE: John A. Statler owns the Oil & Gas Rights.

Company ROME DAUGHERTY
 Address P.O. BOX 184, MARIETTA, OHIO
 Farm JOHN A. STATLER
 Tract _____ Acres 99 1/4 Lease No. _____
 Well (Farm) No. 1 Serial No. _____
 Elevation (Spirit Level) 188'
 Quadrangle WEST UNION S 24
 County DODDRIDGE District CENTRAL
 Engineer JOHN W. HAMILTON
 Engineer's Registration No. 2274
 File No. _____ Drawing No. _____
 Date JULY 23, 1960 Scale 1" = 40 POLES

STATE OF WEST VIRGINIA
 DEPARTMENT OF MINES
 OIL AND GAS DIVISION
 CHARLESTON

WELL LOCATION MAP
 FILE NO. DOD-429

+ Denotes location of well on United States Topographic Maps, scale 1 to 62,500, latitude and longitude lines being represented by border lines as shown.
 - Denotes one inch spaces on border line of original tracing.