

New Location
 Drill Deeper
 Abandonment - 2-25-75

No coal in this vicinity

UNITED DRILLING & EXPLORATION CO. - WEST UNION, W. VA.

Company SMITH AND SIBERT
 Address West Union, W. Va.
 Farm Claude Smith
 Tract _____ Acres 90 ac. Lease No. _____
 Well (Farm) No. Two Serial No. _____
 Elevation (Spirit Level) 867
 Quadrangle West Union SE
 County Doddridge District West Union
 Engineer W. H. [Signature]
 Engineer's Registration No. 1227
 File No. _____ Drawing No. _____
 Date June, 1960 Scale 1" = 20 poles.

STATE OF WEST VIRGINIA
 DEPARTMENT OF MINES
 OIL AND GAS DIVISION
 CHARLESTON

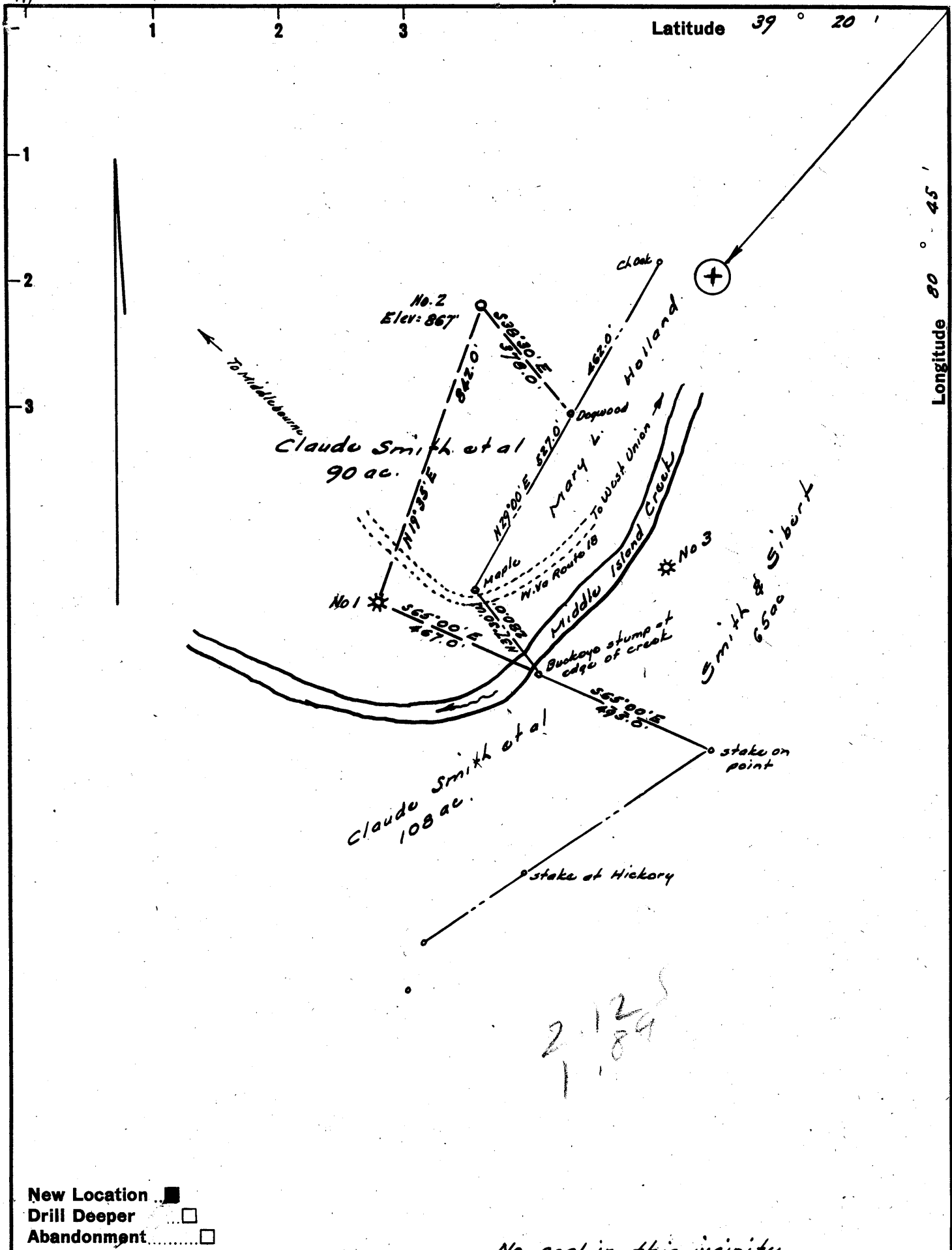
WELL LOCATION MAP

FILE NO. DOD-414-P

+ Denotes location of well on United States Topographic Maps, scale 1 to 62,500, latitude and longitude lines being represented by border lines as shown.

- Denotes one inch spaces on border line of original tracing.

47-017



New Location
 Drill Deeper
 Abandonment

No coal in this vicinity

Company SMITH AND SIBERT
 Address Box 205, West Union, W. Va.
 Farm Claude Smith
 Tract _____ Acres 90 ac. Lease No. _____
 Well (Farm) No. Two Serial No. _____
 Elevation (Spirit Level) 867
 Quadrangle West Union SE
 County Doddridge District West Union
 Engineer W. Sibert Jr.
 Engineer's Registration No. 1227
 File No. _____ Drawing No. _____
 Date June, 1960 Scale 1" = 20 poles.

STATE OF WEST VIRGINIA
 DEPARTMENT OF MINES
 OIL AND GAS DIVISION
 CHARLESTON

WELL LOCATION MAP
 FILE NO. DOD-414

+ Denotes location of well on United States Topographic Maps, scale 1 to 62,500, latitude and longitude lines being represented by border lines as shown.

- Denotes one inch spaces on border line of original tracing.

TOO CROWDED TO PLOT



STATE OF WEST VIRGINIA
DEPARTMENT OF MINES
OIL AND GAS DIVISION 6

Quadrangle West Union

Permit No. DOD-414

WELL RECORD

Oil or Gas Well Oil & Gas
(KIND)

Company Sibert and Smith
Address P.O. Box 205 West Union, W. Va.
Farm Claud F. & Charles C. Smith Acres 90
Location (waters) Middle Island Creek
Well No 2 or Sibert & Smith #II Elev. 867
District West Union County Doddridge
The surface of tract is owned in fee by Freeman Bros
West Union Address W. Va.
Mineral rights are owned by Claur & Charley C. Smith
Address West Union, W. Va.
Drilling commenced June 8-1960
Drilling completed July 18th 1960
Date Shot _____ From _____ To _____
With _____
Open Flow 42/10ths Water in 5" after Fracture inch
22/10ths Merc. in _____ Inch
Volume 4,600 M Cu. Ft.
Rock Pressure 600 lbs. Twelve hrs.
Oil Good show Oil bbls., 1st 24 hrs.
WELL ACIDIZED _____

Casing and Tubing	Used in Drilling	Left in Well	Packers
Size			Kind of Packer
16			
13			
10			Size of
8 1/4			
6 3/4			Depth set
5 3/16		<u>1782</u>	
3			Perf. top
2			Perf. bottom
Liners Used	<u>4 1/2" 157'</u>	<u>1577'</u>	Perf. top <u>20</u>
			Perf. bottom <u>22</u>

CASING CEMENTED 300 SIZE 5 1/2 No. Ft. 7/4/1960 Date
Liner cemented .170 " 4 1/2 7/20/1960
23 sks. Cement- Garaton Service
COAL WAS ENCOUNTERED AT _____ FEET _____ INCHES
_____ FEET _____ INCHES FEET _____ INCHES
_____ FEET _____ INCHES FEET _____ INCHES

WELL FRACTURED 7/23/60

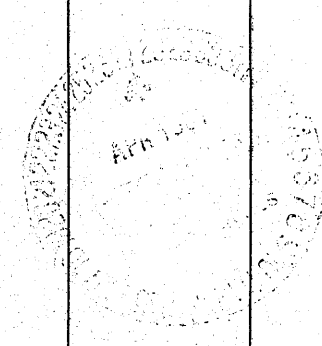
RESULT AFTER TREATMENT above is after fracture above flow

ROCK PRESSURE AFTER TREATMENT 750 24 Hours

Fresh Water _____ Feet _____ Salt Water _____ Feet _____

Formation	Color	Hard or Soft	Top	Bottom	Oil, Gas or Water	Depth	Remarks
Clay			0	12			
Sand			12	30			
Red rock			30	35			
Slate grey			35	130			
Red rock			130	240			
Lime			240	275			
Sand			275	285			
Slate grey			285	292			
Red rock			292	340			
Slate & shells			340	420			
Red rock			420	428			
Slate grey			428	590			
Red rock			590	605			
Slate grey			605	615			
Red rock			615	680			
Slate grey			680	710			
Lime			710	725			
Slate grey			725	795			
Red rock			795	860			
Slate dark			860	890			
Slate & shells			890	912			
Sand			988	1010			
Sand black Little Dunkard			1010	1065			
Sand Big Dunkard			1065	1118			
Lime			1118	1139			
Sand			1139	1165			
Slate dark			1165	1210			
Sand			1210	1236			

Water 240 to 242 - 2.6615 pch



Formation	Color	Hard or Soft	Top ⁶	Bottom	Oil, Gas or Water	Depth Found	Remarks
Slate black			I236	I275			
Sand			I275	I368			
Slate-black-S&S			I368	I380			
Sand			I380	I416			
Slate black			I416	I445			
Sand broken			I445	I485			
Sand			I485	I565			
Slate & shells			I565	I583			
Sand			I583	I606			
Shale black			I606	I644			
Sand - Oil bearing			I644	I659			
Slate grey			I659	I695			
Red rock			I695	I702			
Slate grey			I702	I712			
Lime			I712	I735			
Lime sandy			I735	I778			
Lime			I778	I802			
Lime black			I802	I823			
Lime			I823	I835			
Lime			I835	I839			
Big Ingun sand			I839	I842			
" " "			I842	I847			
" " "			I847	I852			
" " "			I852	I858			
" " "			I858	I871			
" " "			I871	I833	Show of Oil		
" " "			I833	I838			
" " "			I838	I941			

Total depth I953