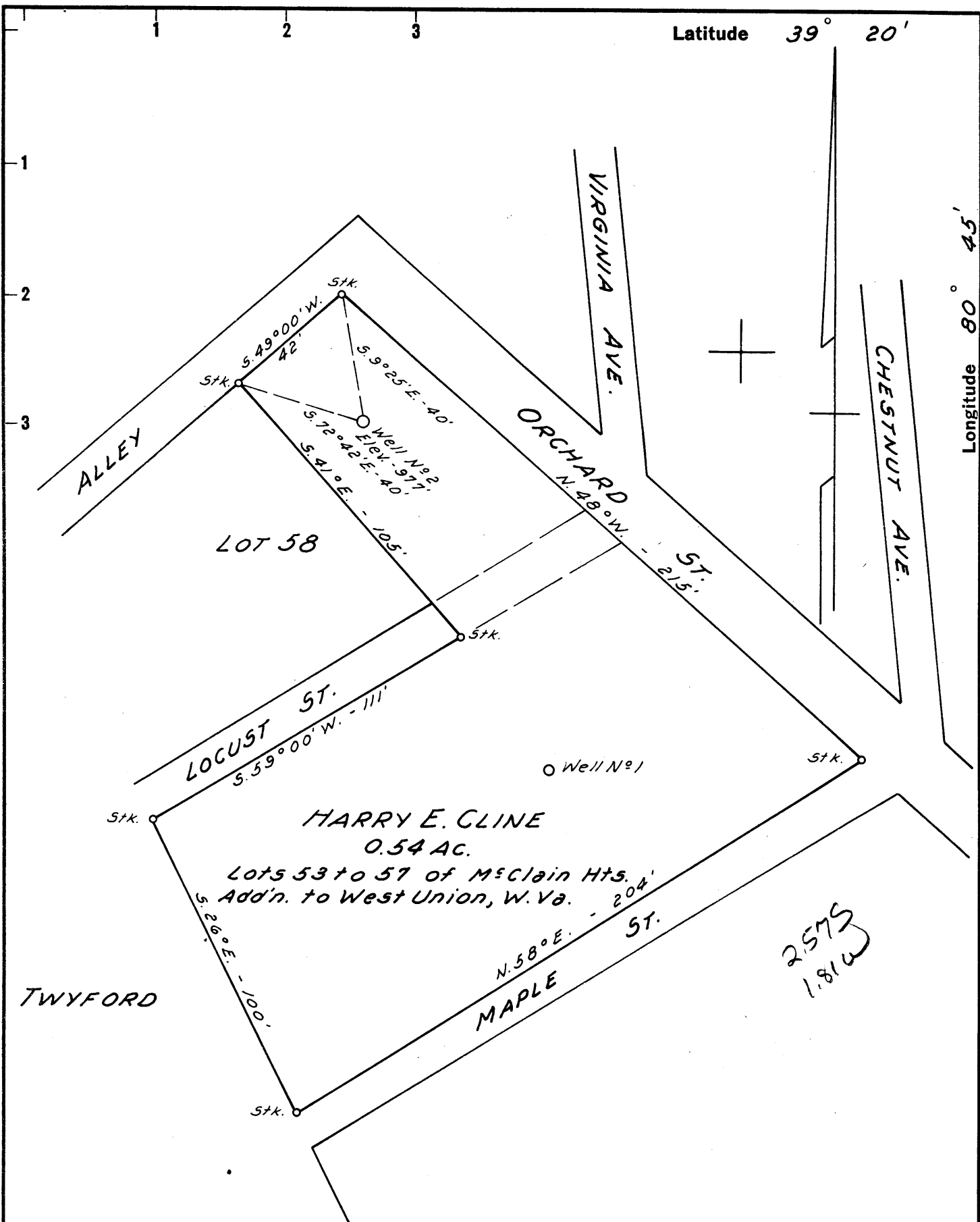


Latitude 39° 20'

Longitude 80° 45'



New Location   
 Drill Deeper   
 Abandonment

NOTE:  
 Harry E. Cline owns in Fee

Company R. J. HUNTER  
 Address 108 NEELY AVE. - WEST UNION, W. VA.  
 Farm HARRY E. CLINE  
 Tract \_\_\_\_\_ Acres 0.54 Lease No. \_\_\_\_\_  
 Well (Farm) No. 2 Serial No. \_\_\_\_\_  
 Elevation (Spirit Level) 977'  
 Quadrangle WEST UNION SE  
 County DODDRIDGE District WEST UNION  
 Engineer JOHN W. HAMILTON  
 Engineer's Registration No. 2274  
 File No. \_\_\_\_\_ Drawing No. \_\_\_\_\_  
 Date JUNE 18, 1960 Scale 1" = 40'

STATE OF WEST VIRGINIA  
 DEPARTMENT OF MINES  
 OIL AND GAS DIVISION  
 CHARLESTON

**WELL LOCATION MAP**  
 FILE NO. DOD-410

+ Denotes location of well on United States Topographic Maps, scale 1 to 62,500, latitude and longitude lines being represented by border lines as shown.

- Denotes one inch spaces on border line of original tracing.

TOO CROWDED TO PLOT