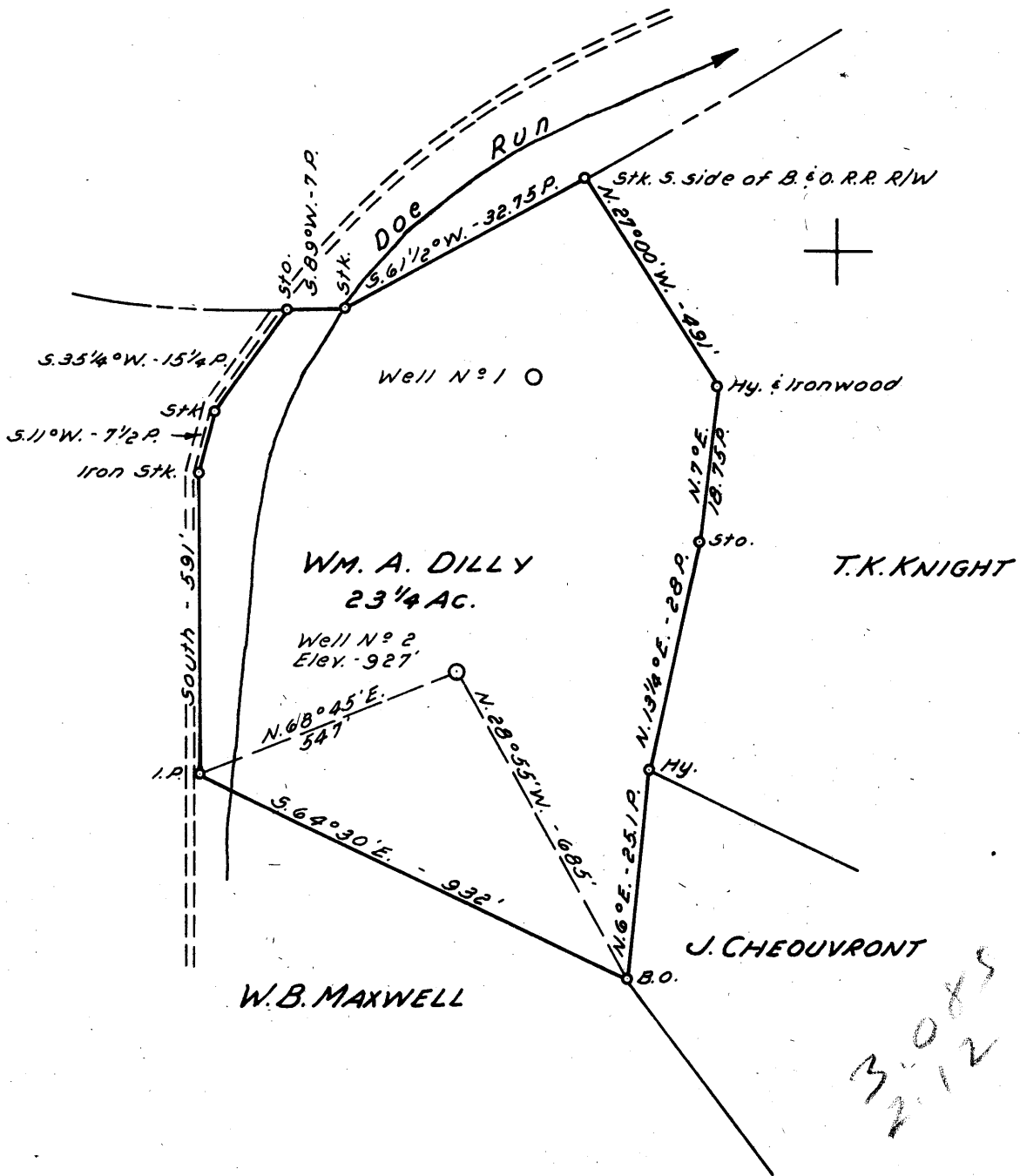


Latitude 39° 20'

Longitude 80° 45'



- New Location
- Drill Deeper
- Abandonment

NOTE:

Wm. A. Dilly has 1/2 Oil and Gas Rights
Lena Rogers has 1/2 Oil and Gas Rights

Company WEST UNION DRILLING CO.
90 CLARENCE POWELL

Address WEST UNION, W. VA.

Farm WM. A. DILLY

Tract _____ Acres 23 1/4 Lease No. _____

Well (Farm) No. 2 Serial No. _____

Elevation (Spirit Level) 927'

Quadrangle WEST UNION SE

County DODDRIDGE District WEST UNION

Engineer JOHN W. HAMILTON

Engineer's Registration No. 2274

File No. _____ Drawing No. _____

Date MAY 28, 1960 Scale 1" = 20 POLES

STATE OF WEST VIRGINIA
DEPARTMENT OF MINES
OIL AND GAS DIVISION
CHARLESTON

WELL LOCATION MAP

FILE NO. DOD-394

+ Denotes location of well on United States Topographic Maps, scale 1 to 62,500, latitude and longitude lines being represented by border lines as shown.

- Denotes one inch spaces on border line of original tracing.

TOO CROWDED TO PLOT



STATE OF WEST VIRGINIA
DEPARTMENT OF MINES
OIL AND GAS DIVISION 8

Quadrangle West Union

Permit No. DOD-394

WELL RECORD

Oil or Gas Well Gas

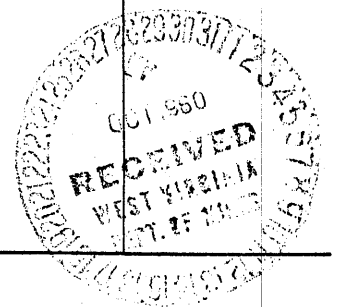
Company West Union Drilling Co., Inc.
Address West Union, W. Va.
Farm W. A. Dilly Acres 23-1/4
Location (waters) Doe Run
Well No. 2 Elev. 927'
District West Union County Doddridge
The surface of tract is owned in fee by W. A. Dilly Address West Union, W. Va.
Mineral rights are owned by W. A. Dilly & Lena Rogers Address West Union, W. Va.
Drilling commenced June 21, 1960
Drilling completed Aug. 28, 1960
Date Shot _____ From _____ To _____
With _____
Open Flow _____ /10ths Water in No Test Inch _____
_____ /10ths Merc. in _____ Inch _____
Volume _____ Cu. Ft. _____
Rock Pressure 230 lbs. 24 hrs.
Oil No bbls., 1st 24 hrs.
WELL ACIDIZED _____

Casing and Tubing	Used in Drilling	Left in Well	Packers
Size			Kind of Packer
16			
13			
10	77		Size of
8 3/4	558		
6 3/4	1084		Depth set
5 3/16	1979	1979	
3			Perf. top
2			Perf. bottom
Liners Used			Perf. top
			Perf. bottom

WELL FRACTURED Dowell Co. Used 520 BBl's of water and 11,000# Sand

RESULT AFTER TREATMENT 5/10ths water in 2" 94,000 Cu. Ft.
ROCK PRESSURE AFTER TREATMENT 700 # 24 Hours
Fresh Water at 316-342' Feet Salt Water _____ Feet

Formation	Color	Hard or Soft	Top	Bottom	Oil, Gas or Water	Depth	Remarks
Shale	Red	Soft	0	54			
Shale	Grey	Soft	54	157			
Sand			157	177			
Shale		Med.	177	274			
Sand			274	286			
Shale			286	316			
Sand			316	342			
Shale	Blue		342	376			
Lime			376	472			
Sand			472	500			
Shael	Blue		500	567			
Shale	Red		567	582			
Shale	Blue		582	609			
Lime		Hard	609	645			
Shale	Blue		645	735			
Shale	Red		735	790			
Shale	Blue		790	820			
Lime	Brown	Hard	820	832			
Shale	Red		832	865			
Shale & Shells			865	895			
Lime			895	922			
Sand			922	945			
Shale			945	970			
Red Rock	Red		970	1020			
Shale	Black		1020	1073			
Sand			1073	1107			
Slate	Black		1107	1138			
Sand			1138	1198			
Shale			1198	1212			



Formation	Color	Hard or Soft	Top <i>8</i>	Bottom	Oil, Gas or Water	Depth Found	Remarks
Lime			1212	1228			
Shale			1228	1242			
Sand			1242	1330			
Shale			1330	1360			
Sand			1360	1385			
Shale			1385	1458			
Sand	Grey	Hard	1458	1502			
Slate	Black		1502	1548			
Sand			1548	1592			
Shale & Shells			1592	1666			
Sand			1666	1686			
Shale			1686	1707			
Sand			1707	1712			
Shale			1712	1784			
Sand			1784	1834			
Shale			1834	1870			
Lime (Little)			- 1870	1900			
Shale or Pencil Cave			1900	1906			
Lime (Big)			- 1906	2040			
Sand (Injun)			2040	2075	Gas	2074'	
Shale			2075	2105			
			2105	Total Depth			