

Latitude 39° 20'

Longitude 80° 45'

YATES AVE.

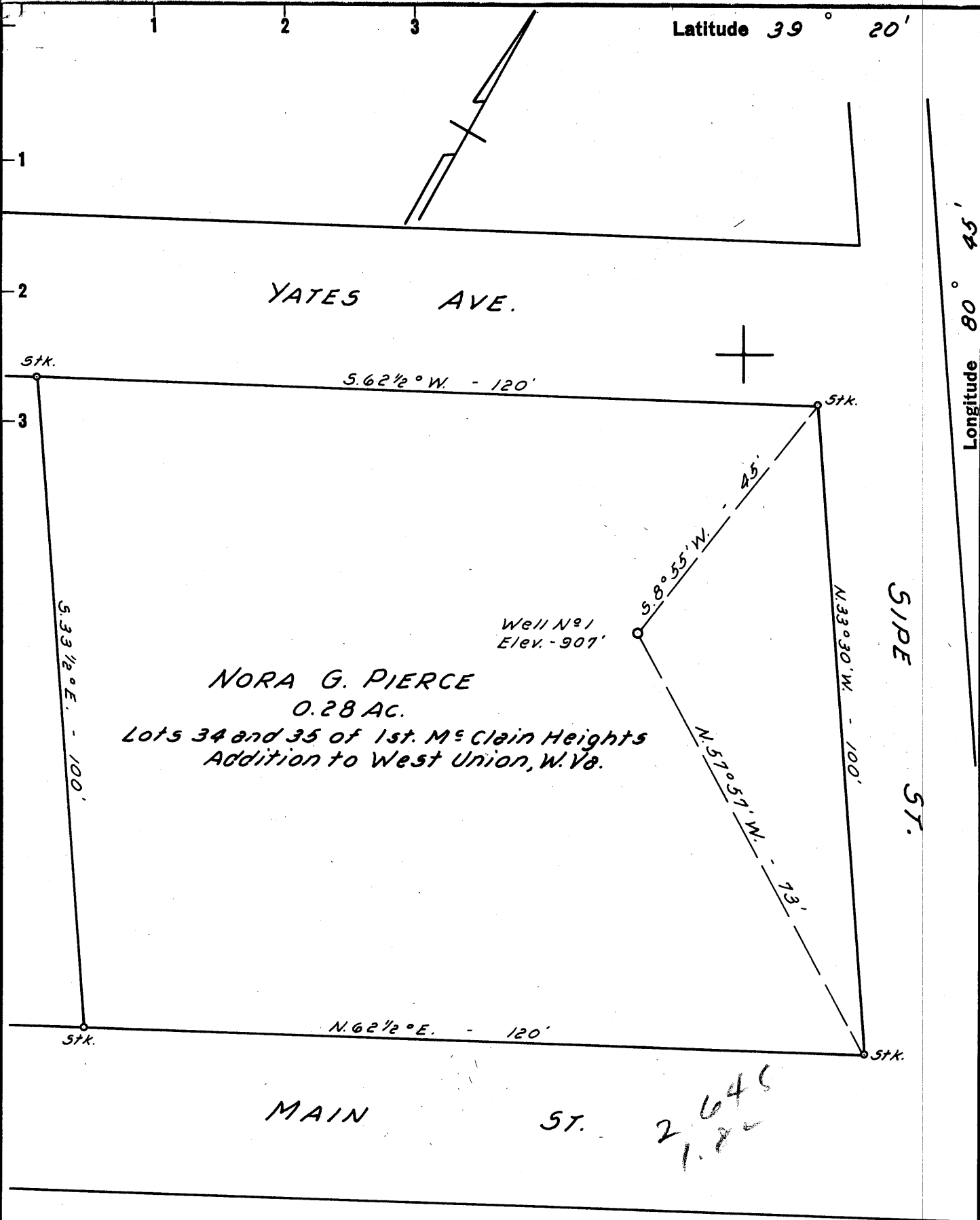
SIDE ST.

MAIN ST.

2645  
1.72

NORA G. PIERCE  
0.28 AC.  
Lots 34 and 35 of 1st. McClain Heights  
Addition to West Union, W. Va.

Well No. 1  
Elev. - 907'



New Location    
 Drill Deeper    
 Abandonment    
 NOTE: Nora G. Pierce owns in Fee.

Company R. J. HUNTER  
 Address 108 NEELY AVE. - WEST UNION, W. VA.  
 Farm NORA G. PIERCE  
 Tract \_\_\_\_\_ Acres 0.28 Lease No. \_\_\_\_\_  
 Well (Farm) No. 1 Serial No. \_\_\_\_\_  
 Elevation (Spirit Level) 907'  
 Quadrangle WEST UNION SE  
 County DODDRIDGE District WEST UNION  
 Engineer JOHN W. HAMILTON  
 Engineer's Registration No. 2274  
 File No. \_\_\_\_\_ Drawing No. \_\_\_\_\_  
 Date MAY 28, 1960 Scale 1" = 20'

STATE OF WEST VIRGINIA  
 DEPARTMENT OF MINES  
 OIL AND GAS DIVISION  
 CHARLESTON

WELL LOCATION MAP  
 FILE NO. DOD-392  
plugged 7/14/1960

+ Denotes location of well on United States Topographic Maps, scale 1 to 62,500, latitude and longitude lines being represented by border lines as shown.

- Denotes one inch spaces on border line of original tracing.

TOO CROWDED TO PLOT 5-3-60



STATE OF WEST VIRGINIA  
DEPARTMENT OF MINES  
OIL AND GAS DIVISION //

Quadrangle West Union

Permit No. DOD-392

WELL RECORD

Oil or Gas Well dry  
(KIND)

Company R. J. Hunter  
Address West Union, W. Va.  
Farm Nora G. Pierce Acres 0.28  
Location (waters) Middle Island Creek  
Well No. One (1) Elev. 907'  
District West Union Mag. County Doddridge  
The surface of tract is owned in fee by Nora G. Pierce  
Address West Union, W. Va.  
Mineral rights are owned by Same  
Address \_\_\_\_\_

Drilling commenced June 12, 1960  
Drilling completed July 10, 1960  
Date Shot \_\_\_\_\_ From \_\_\_\_\_ To \_\_\_\_\_  
With \_\_\_\_\_

Open Flow \_\_\_\_\_ /10ths Water in \_\_\_\_\_ Inch  
\_\_\_\_\_ /10ths Merc. in \_\_\_\_\_ Inch  
Volume \_\_\_\_\_ Cu. Ft.  
Rock Pressure Not taken lbs. \_\_\_\_\_ hrs.  
Oil Five (5) estimated bbls., 1st 24 hrs.  
WELL ACIDIZED \_\_\_\_\_

Casing and Tubing	Used in Drilling	Left in Well	Packers
Size			Kind of Packer
16			
13			
10	18'		Size of
8 3/4	438'		
6 5/8	927'		Depth set
5 3/16	1822'	1822'	
3			Perf. top
2			Perf. bottom
Liners Used			Perf. top
			Perf. bottom

CASING CEMENTED 1822' SIZE 5" No. Ft. \_\_\_\_\_ Date \_\_\_\_\_  
12 chs cement - 4 chs 'gel' Lamm cementing  
COAL WAS ENCOUNTERED AT None FEET \_\_\_\_\_ INCHES  
\_\_\_\_\_ FEET \_\_\_\_\_ INCHES FEET \_\_\_\_\_ INCHES  
\_\_\_\_\_ FEET \_\_\_\_\_ INCHES FEET \_\_\_\_\_ INCHES

WELL FRACTURED \_\_\_\_\_

RESULT AFTER TREATMENT \_\_\_\_\_

ROCK PRESSURE AFTER TREATMENT \_\_\_\_\_

Fresh Water 225 4 bailers Per Hr. \_\_\_\_\_ Salt Water \_\_\_\_\_ Feet \_\_\_\_\_

Formation	Color	Hard or Soft	Top	Bottom	Oil, Gas or Water	Depth	Remarks
Soil			0	15			
Sand			15	60			
R. Rock			60	105			
Sand			105	110			
Gray Shale			110	120			
Red Shale			120	125			
Gray Shale			125	135			
Red Shale			135	150			
Sand			150	165			
Red			165	175			
Gray			175	190			
Red			190	205			
Sand			205	225	4 bailers water per hr.		
Gray			225	255			
Sand			255	285	Hole full water		
Red			285	290			
Sand & Gray S.			290	335			
Red			335	350			
Sand			350	360			
Red			360	370			
Black			370	376			
Gray Shale			376	390			
Sand			390	405			
Gray Shale			405	415			
Sand			415	435			
Gray Shale			435	440			

Formation	Color	Hard or Soft	Top //	Bottom	Oil, Gas or Water	Depth Found	Remarks
Red			440	445			
Gray			445	480			
Sand			480	518			
Red			518	523			
Gray Shale			523	550			
Sand			550	560			
Gray Shale			560	570			
Red			570	585			
Sand			585	600			
Grey			600	610			
Red			610	665			
Sand			665	675			
Gray Shale			675	685			
Sand			685	705			
Red Shale			705	750			
Gray			750	760			
Red			760	766			
Sand			766	790			
Gray Shale & Sand			790	825			
Red			825	860			
Gray			860	880			
Red			880	895			
Sand			895	902			
Gray Shale			902	910			
Red			910	923			
Sand			923	950			
Gray Shale			950	965			
Lime			965	985			
Gray Shale			985	1000			
Black			1000	1035			
Sand			1035	1075			
Lime			1075	1100			
Gray Shale			1100	1110			
Sand			1110	1125			
Gray Shale			1125	1137			
Sand			1137	1225			
Gray Shale			1225	1235			
Sand			1235	1245			
Gray Shale			1245	1270			
Sand			1270	1290			
Black Shale			1290	1300			
Sand			1300	1385			
Black Shale			1385	1415			
Sand			1415	1515			
Black Shale			1515	1520			
Gray			1520	1540			
Sand & Shale			1540	1570			
Sand			1570	1630			
Gray			1630	1650			
Sand			1650	1660			
Slate Black			1660	1685			
Gray Shale			1685	1695			
Sand			1695	1707			
Gray Shale			1707	1733			
Red			1733	1760			
Gray			1760	1773			
L. Lime			1773	1788			
Gray Shale			1788	1800			
B. Lime			1800	1886			
B. Injun			1886	1987	Oil-1890	- 1900	

Date \_\_\_\_\_, 19\_\_

APPROVED \_\_\_\_\_, Owner

By \_\_\_\_\_ (Title)