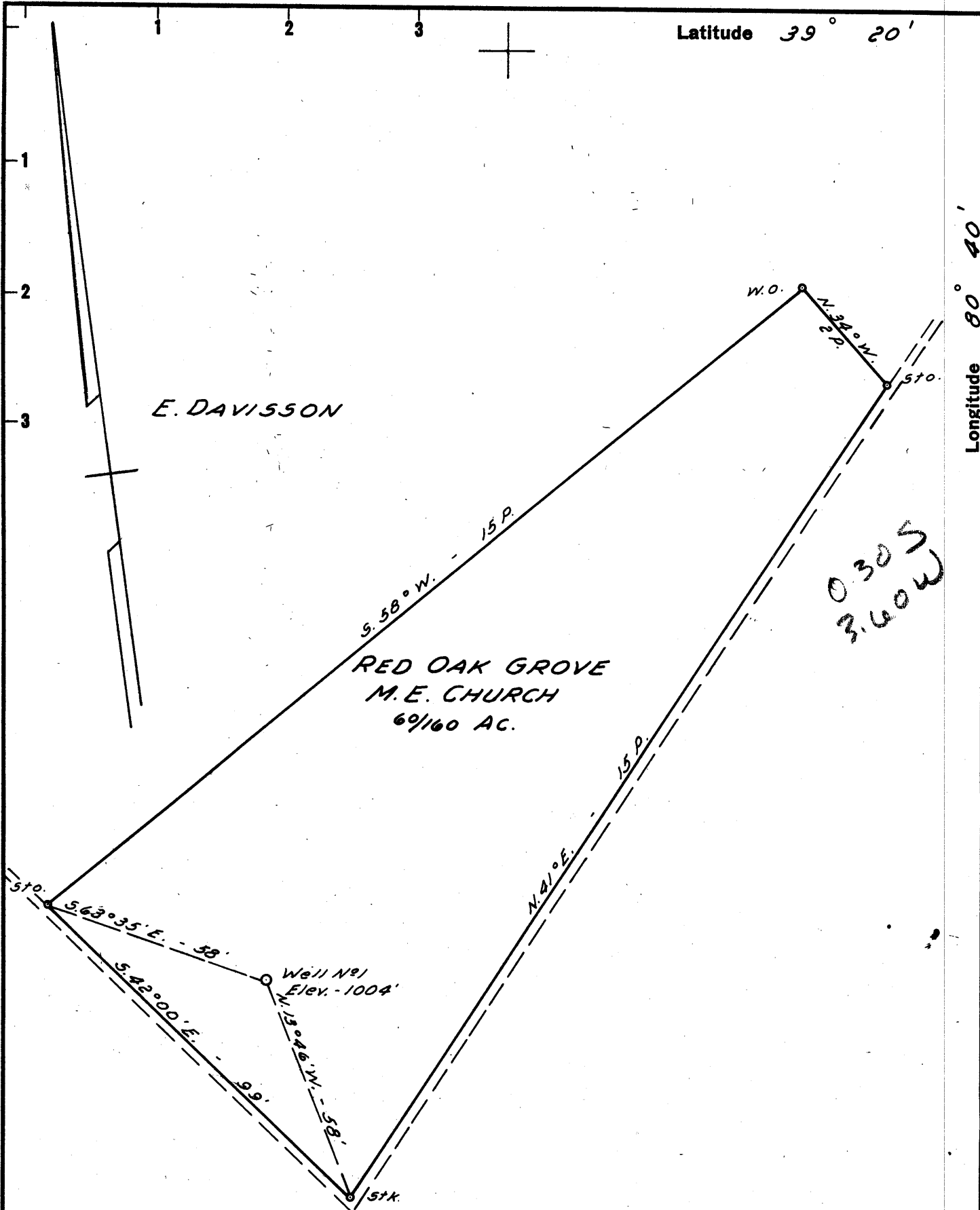


Latitude 39° 20'

Longitude 80° 40'



New Location NOTE:
 Drill Deeper
 Abandonment Red Oak Grove M.E. Church owns in Fee.

Company FRANK E. MICHELS, AGENT
 Address WEST UNION, W.VA.
 Farm RED OAK GROVE M.E. CHURCH
 Tract _____ Acres 69/160 Lease No. _____
 Well (Farm) No. 1 Serial No. _____
 Elevation (Spirit Level) 1004'
 Quadrangle CENTERPOINT SW
 County DODDRIDGE District WEST UNION
 Engineer JOHN W. HAMILTON
 Engineer's Registration No. 2274
 File No. _____ Drawing No. _____
 Date MAY 26, 1960 Scale 1" = 2 POLES

STATE OF WEST VIRGINIA
 DEPARTMENT OF MINES
 OIL AND GAS DIVISION
 CHARLESTON

WELL LOCATION MAP
 FILE NO. DoD-390

+ Denotes location of well on United States Topographic Maps, scale 1 to 62,500, latitude and longitude lines being represented by border lines as shown.
 - Denotes one inch spaces on border line of original tracing.