

New Location
 Drill Deeper
 Abandonment

Company GARRETSON & EDWARDS
 Address HOMWOOD ADD'N. FAIRMONT, W. VA.
 Farm CHAS. CHEUVRONT MRS.
 Tract _____ Acres 92.8 Lease No. _____
 Well (Farm) No. 1 Serial No. _____
 Elevation (Spirit Level) 1198'
 Quadrangle WEST UNION SE
 County DODDRIDGE District WEST UNION
 Engineer JOHN W. HAMILTON
 Engineer's Registration No. 2274
 File No. _____ Drawing No. _____
 Date MAY 18, 1960 Scale 1" = 30 POLES

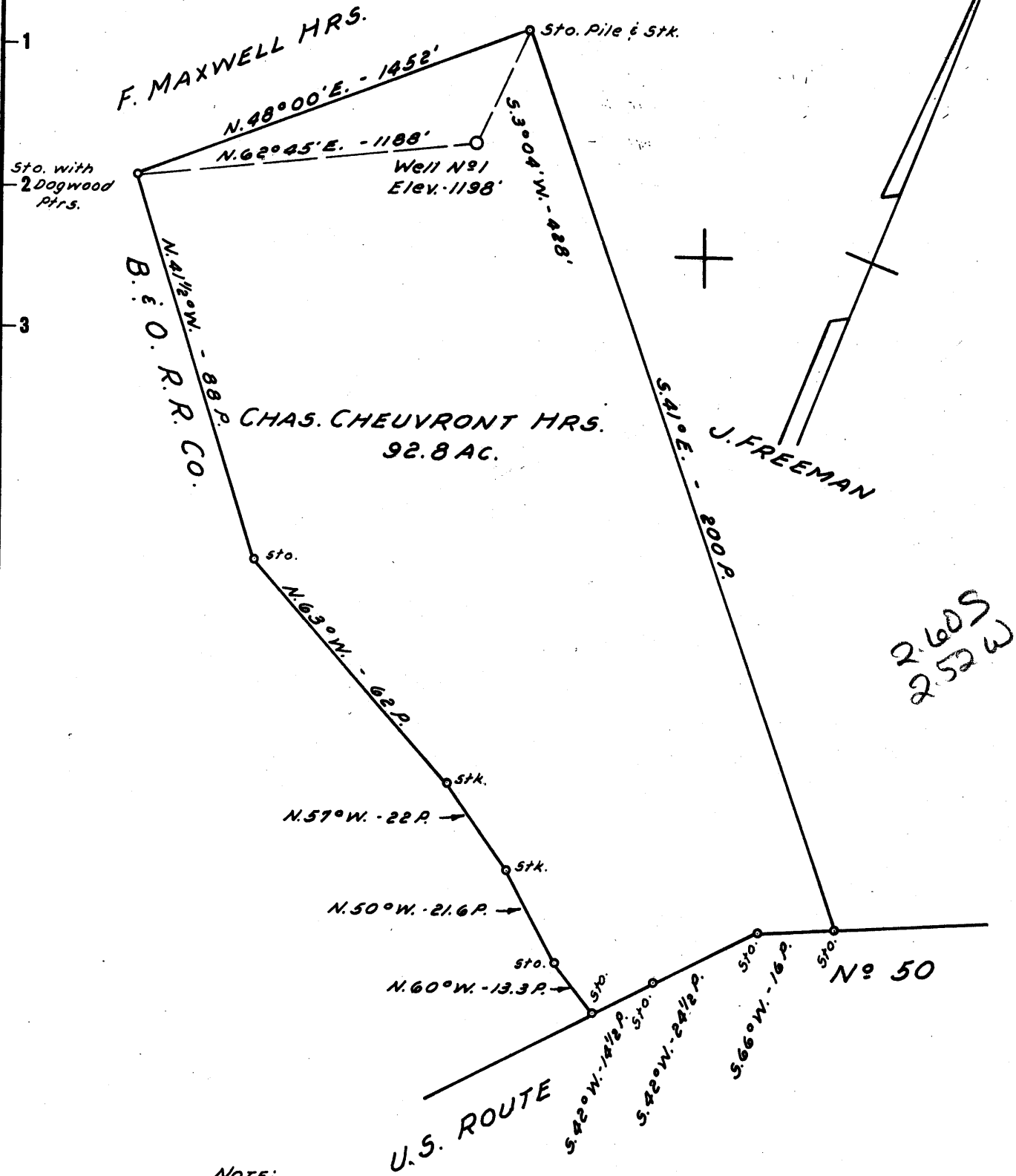
STATE OF WEST VIRGINIA
 DEPARTMENT OF MINES
 OIL AND GAS DIVISION
 CHARLESTON

WELL LOCATION MAP
 FILE NO. DoD-387

+ Denotes location of well on United States Topographic Maps, scale 1 to 62,500, latitude and longitude lines being represented by border lines as shown.
 - Denotes one inch spaces on border line of original tracing.

Latitude 39° 20'

Longitude 80° 45'



2.609
2.52 W

NOTE:
 1/2 Oil & Gas Rights owned by Chas. Cheuvront Hrs. 1/4 Carl Edwards,
 Power of Attorney - 44 Edwards St. - Fairmont, W. Va.
 1/2 Oil & Gas Rights owned by Dotson Hrs. 1/4 Hazel Butler
 1409 Buckhannon Pike - Nutter Fort, W. Va.

New Location
 Drill Deeper
 Abandonment

Company GARRETSON & EDWARDS
 Address HOMWOOD ADD'N. FAIRMONT, W. VA.
 Farm CHAS. CHEUVRONT HRS.
 Tract _____ Acres 92.8 Lease No. _____
 Well (Farm) No. 1 Serial No. _____
 Elevation (Spirit Level) 1198'
 Quadrangle WEST UNION SE
 County DODDRIDGE District WEST UNION
 Engineer JOHN W. HAMILTON
 Engineer's Registration No. 2274
 File No. _____ Drawing No. _____
 Date MAY 18, 1960 Scale 1" = 30 POLES

STATE OF WEST VIRGINIA
 DEPARTMENT OF MINES
 OIL AND GAS DIVISION
 CHARLESTON

WELL LOCATION MAP
 FILE NO. DoD-387

+ Denotes location of well on United States Topographic Maps, scale 1 to 62,500, latitude and longitude lines being represented by border lines as shown.

- Denotes one inch spaces on border line of original tracing.