

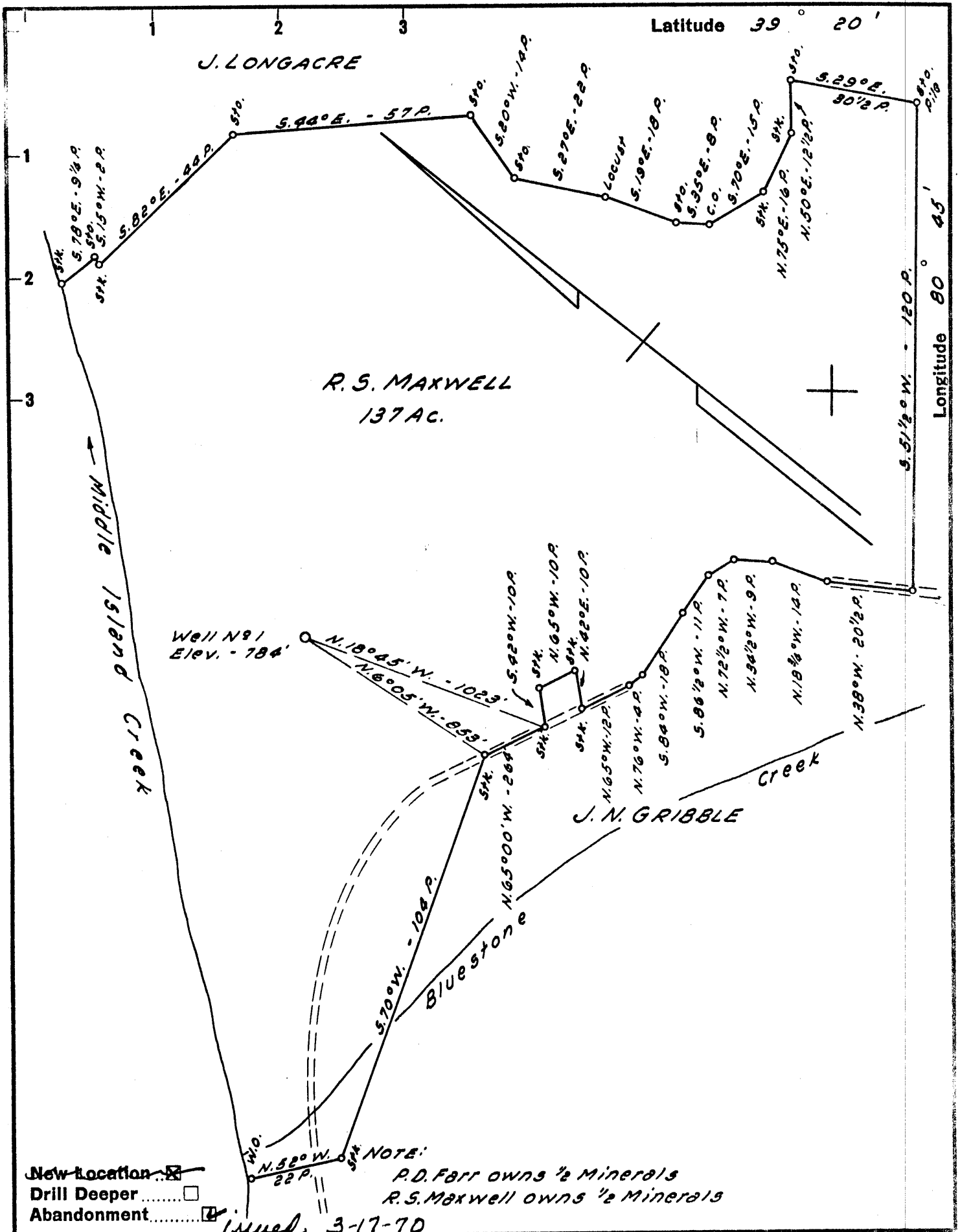
Company	TWIN J DRILLING CO.
Address	BOX 352, ELLENBORO, W.VA.
Farm	R. S. MAXWELL
Tract	Acres 137 Lease No.
Well (Farm) No.	1 Serial No.
Elevation (Spirit Level)	784'
Quadrangle	WEST UNION - SE
County	DODDRIDGE District WEST UNION
Engineer	JOHN W. HAMILTON
Engineer's Registration No.	2274
File No.	Drawing No.
Date	APRIL 28, 1960 Scale 1" = 30 FEET

STATE OF WEST VIRGINIA
DEPARTMENT OF MINES
OIL AND GAS DIVISION
CHARLESTON

WELL LOCATION MAP
FILE NO. DOD-371

+ Denotes location of well on United States Topographic Maps, scale 1 to 62,500, latitude and longitude lines being represented by border lines as shown.

- Denotes one inch spaces on border line of original tracing.



Vecellio & Groen Const. Co
 Company ~~TWIN DRILLING CO.~~
 Address ~~5111 BERRY, WEST VIRGINIA 26436~~
 Box 352, ELLENBORO, W. VA.

Farm R.S. MAXWELL

Tract _____ Acres 137 Lease No. _____

Well (Farm) No. 1 Serial No. _____

Elevation (Spirit Level) 784'

Quadrangle WEST UNION SE

County DODDRIDGE District WEST UNION

Engineer JOHN W. HAMILTON

Engineer's Registration No. 227A

File No. _____ Drawing No. _____

Date APRIL 28, 1960 Scale 1" = 30 POLES

STATE OF WEST VIRGINIA
 DEPARTMENT OF MINES
 OIL AND GAS DIVISION
 CHARLESTON

WELL LOCATION MAP
 FILE NO. DOD-371-P

+ Denotes location of well on United States Topographic Maps, scale 1 to 62,500, latitude and longitude lines being represented by border lines as shown.

- Denotes one inch spaces on border line of original tracing.

APR 27 1970



STATE OF WEST VIRGINIA
DEPARTMENT OF MINES
OIL AND GAS DIVISION

Quadrangle West Union

Permit No. DOD 371

WELL RECORD

Oil or Gas Well Gas
(KIND)

Company Twin J Drilling Co.
Address Box 352 Ellenboro, W. Va
Farm Maxwell, R. S. Acres 137
Location (waters) Bluestone creek
Well No. 1 Elev. 784
District West Union County Doddridge

Casing and Tubing	Used in Drilling	Left in Well	Packers
Size			Kind of Packer
16			
13			
8 1/4" 24#	210	pulled	Size of
8 1/4" 24#	819	pulled	
6 3/8"	1806	1806	Depth set
5 3/16			
3			Perf. top
2			Perf. bottom
Liners Used			Perf. top
			Perf. bottom

The surface of tract is owned in fee by Robert S. Maxwell
Address West Union, W. Va.
Mineral rights are owned by Robert S. Maxwell
Address _____

Drilling commenced May 25, 1960
Drilling completed June 16, 1960
Date Shot not shot From _____ To _____

With _____
Open Flow 50 /10ths Water in _____ Inch
2 /10ths Merc. in _____ Inch
Volume 1,300,000* Cu. Ft.
Rock Pressure 350 lbs. 12 hrs.
Oil 1655 show bbls., 1st 24 hrs.
WELL ACIDIZED see reverse side

CASING CEMENTED yes SIZE 7" No. Ft. 300 Date June 21, 1960

COAL WAS ENCOUNTERED AT none FEET _____ INCHES
_____ FEET _____ INCHES
_____ FEET _____ INCHES

WELL FRACTURED see reverse side

RESULT AFTER TREATMENT 50/10 M.2" 1,300,000 (Big Injun Three sands)

ROCK PRESSURE AFTER TREATMENT 350 12 hrs.

Fresh Water 60 ft. Feet. Salt Water _____ Feet.

Formation	Color	Hard or Soft	Top	Bottom	Oil, Gas or Water	Depth	Remarks
Top soil			0	20			
lime rock			20	80			
Red rock			80	125			
slate			125	195			
red rock			195	205			
slate			205	255			
lime			255	285			
slate & shells			285	335			
black slate			335	368			
sand			368	390			
black slate			390	405			
sand			405	435			
slate & shells			435	475			
Black slate			475	580			
Red rock			585	595			
slate & shells			595	635			
sand			635	655			
slate			655	695			
sand			695	705			
red lime			705	715	show of gas		
slate & shells			715	740			
black slate			740	760			
gritty lime			760	805			
sand			805	820			
slate			820	908			
B.D. sand			908	965			
black slate			965	1050			
lime			1050	1075			
sand			1075	1085			



(over)

Formation	Color	Top	Bottom	Oil, Gas or Water	Depth	Remarks
-----------	-------	-----	--------	-------------------	-------	---------

Formation	Color	Hard or Soft	Top 10	Bottom	Oil, Gas or Water	Depth Found	Remarks
slate			1085	1095			
sand			1095	1130			
h. slate			1130	1180			
sand			1180	1215			
h. slate			1215	1265			
sand			1265	1380			
slate			1380	1410			
big lime			1410	1460			
sand			1460	1500			
slate			1500	1520			
sand			1520	1549	show of gas		
slate			1549	1598	" " "	1573	
lime			1598	1640			
pencil			1640	1655	show of oil	1655	
lime			1655	1616			
T-D			1616				
Casing record							
7" casing run with shoe cemented by Garaton Service 25 bags cement and 4 bags aquagel, cement up between casing and hole 300 ft							
Fractured by Dowell. Pressure up to 19 0/8 using 900 bbl. water, 45000 lbs. sand. J-100 50 lbs., J 84 200 lbs. Detergent 20 gal. X acid 5.0 gal.							
cleaned out to bottom sand (still covered) final open flow 50/10 H. 2" 1,300,000 12 hr. pressure 350#							

Date July 12, 1960

APPROVED Twin J. Drilling Co., Owner
 By C. L. Corbett (Title) Partner