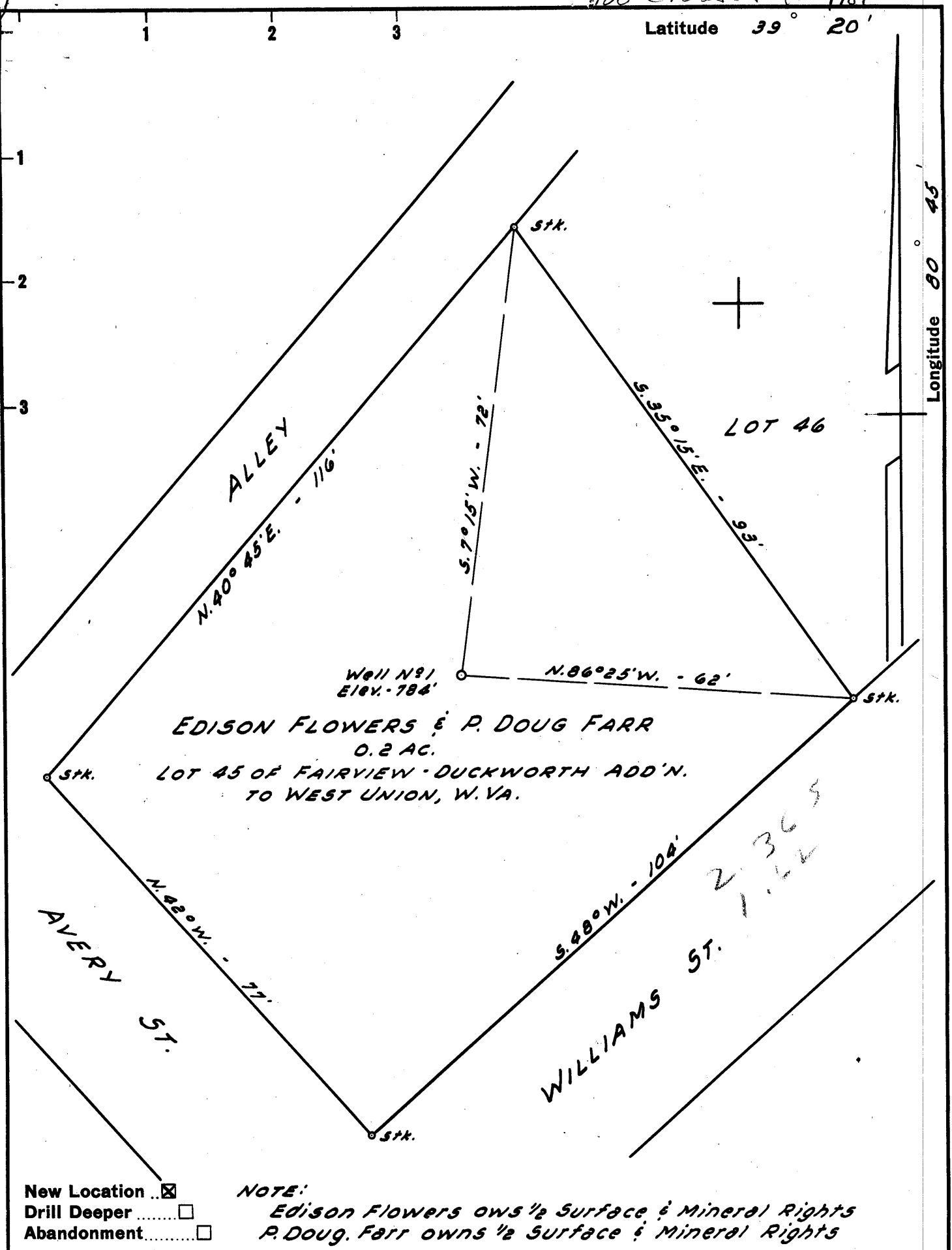


Too crowded to plot

Latitude 39° 20'

Longitude 80° 45'



EDISON FLOWERS & P. DOUG FARR
 0.2 AC.
 LOT 45 OF FAIRVIEW-DUCKWORTH ADD'N.
 TO WEST UNION, W. VA.

New Location
 Drill Deeper
 Abandonment

NOTE:
 Edison Flowers owns 1/2 Surface & Mineral Rights
 P. DOUG. Farr owns 1/2 Surface & Mineral Rights

Company ALLEN & BRUKENFELD
 Address Box 176 WEST UNION, W. VA.
 Farm EDISON FLOWERS & P. DOUG FARR
 Tract _____ Acres 0.2 Lease No. _____
 Well (Farm) No. 1 Serial No. _____
 Elevation (Spirit Level) 784'
 Quadrangle WEST UNION SE
 County DODDRIDGE District WEST UNION
 Engineer JOHN W. HAMILTON
 Engineer's Registration No. 2274
 File No. _____ Drawing No. _____
 Date APRIL 19, 1960 Scale 1" = 20'

STATE OF WEST VIRGINIA
 DEPARTMENT OF MINES
 OIL AND GAS DIVISION
 CHARLESTON

WELL LOCATION MAP
 FILE NO. DoD-367

+ Denotes location of well on United States Topographic Maps, scale 1 to 62,500, latitude and longitude lines being represented by border lines as shown.
 - Denotes one inch spaces on border line of original tracing.



Please note this is only Thomas E. Allen

STATE OF WEST VIRGINIA
DEPARTMENT OF MINES
OIL AND GAS DIVISION 7

Quadrangle West Union

Permit No. DOD - 367

WELL RECORD

Oil or Gas Well Combination
(KIND)

Company Thomas E. Allen
Address Edison Flowers- Douglas Farr
Farm airview Addition Lot 45 Acres 0.2
Location (waters) Middle Island
Well No. 1 Elev. 784
District Central County Doddridge
The surface of tract is owned in fee by Flowers-Farr
Address West Union, W. Va
Mineral rights are owned by Flowers-Farr
Address West Union, W. Va

Drilling commenced June 11, 1960
Drilling completed July 26, 1960
Date Shot July 27, 1960 From 1760 To 1770
With 10 Quarts

Open Flow /10ths Water in Inch
 /10ths Merc. in Inch
Volume 105,000 Cu. Ft.
Rock Pressure 110 lbs. 12 hrs.
Oil 4 bbls., 1st 24 hrs.
WELL ACIDIZED no
No
WELL FRACTURED No

Casing and Tubing	Used in Drilling	Left in Well	Packers
Size			
16	16'	None	Kind of Packer
13	83.8	None	
10	919'	None	Size of
6 3/16	1633'	1633'	Depth set
3			Perf. top
2	1829'7"	1829'7"	Perf. bottom
Liners Used			Perf. top
			Perf. bottom

CASING CEMENTED No SIZE 5 1/8 No. Ft. 1633 Date July 14, 1960

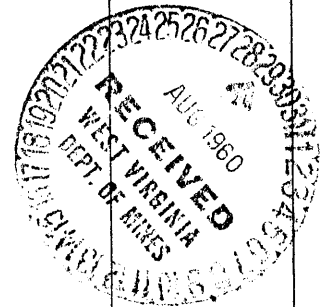
COAL WAS ENCOUNTERED AT No FEET INCHES
 FEET INCHES FEET INCHES
 FEET INCHES FEET INCHES

RESULT AFTER TREATMENT

ROCK PRESSURE AFTER TREATMENT

Fresh Water 160 Feet Salt Water Feet

Formation	Color	Hard or Soft	Top	Bottom	Oil, Gas or Water	Depth	Remarks
Surface R	Rock	Hard	0	12			
Rock	Red	Hard	12	90			
Slate	Gray	Hard	90	145			
Sand	Gray	Soft	145	175			
Slate	Gray	Hard	175	205			
Sand	Gray	Hard	205	272			
Slate	White	Hard	272	283			
Lime-Rock	Gray-Red	Hard	283	295			
Rock	Red	Hard	295	355			
Lime	Gray	Hard	355	370			
Slate	Gray	Soft	370	390			
Slate	Gray	Soft	390	436			
Lime	Gray	Hard	436	465			
Slate	Gray	Hard	465	490			
Slate	Gray	Hard	490	510			
Rock-Lime	Red-Gray	Soft	510	526			
Lime-Rock	Gray-Red	soft	526	590			
Lime	Gray	Hard	590	624			
Rock	Red	Hard	624	635			
Lime	Gray	Hard	635	665			
Rock	Red	Soft	665	730			
Rock	Red	Soft	730	750			
Sand	SandGr.	Hard	750	760			
Slate	Gray	Hard	760	770			
Rock	Red	Hard	770	780			
Lime	Gray	Hard	780	895			
Lime	Gray	Hard	895	943			
Sand	Gray	Soft	943	990			
Slate	Gray	Hard	990	1004			



Formation	Color	Hard or Soft	Top [?]	Bottom	Oil, Gas or Water	Depth Found	Remarks
Lime	Gray	Hard	1004	1010			
Sand	Gray	Soft	1010	1041			
Sand	Gray	Soft	1041	1065			
Slate	Gray	Hard	1065	1075			
Sand	Gray	Hard	1075	1080			
Sand	Gray	Hard	1080	1108			
Lime	Gray	Soft	1108	1127			
Sand	Gray	Hard	1127	1133			
Lime	Gray	Hard	1133	1171			
Sand	Gray	Hard	1171	1183			
Sand	Gray	Hard	1183	1218			
Sand	Gray	Hard	1218	1242			
Slate	Gray	Soft	1242	1270			
Sand-Slate	Gray	Hard	1270	1356			
Sand	Gray	Hard	1356	1384			
Lime-Sand	Gray	Hard	1384	1392			
Lime-Sand	Gray	Soft	1392	1416			
Sand	Gray	Soft	1416	1455			
Sand	Gray	Soft	1455	1459			
Lime	Gray	Hard	1459	1481			
Sand	Gray	Hard	1481	1495			
Slate	Gray	Soft	1495	1513			
Slate-Lime	Gray	Hard	1513	1535			
Slate-Lime	Gray	Hard	1535	1567			
Slate-Lime	Gray	Hard	1567	1575			
Lime	Gray	Hard	1575	1602	Oil Show	1575	Maxon Sand
Sand	Gray	Soft	1602	1630			
Slate	Gray	Hard	1630	1650			
Lime	Gray	Hard	1650	1674	Oil Show	1674	
Lime	Gray	Soft	1674	1688			
Lime	Gray	Soft	1688	1700			Set 5 3/16" Casing
Lime	Gray	Soft	1700	1713			
Sand	Gray	Hard	1713	1725	Gas Show	1725	
Sand	Gray	Hard	1725	1731			
Sand	Gray	Hard	1731	1744	Oil Show	1744	
Sand	Gray	Hard	1744	1757			
Sand	Gray	Hard	1757	1768			
Sand	Gray	Hard	1768	1773			
Sand	Gray	Hard	1773	1782			
Sand-Clay	Gray	Soft	1782	1790			
Sand	Gray	Hard	1790	1810			
Sand	Gray	Hard	1810	1816			
Sand	Gray	Hard	1816	1830		1829	Set 2" Casing
Total Depth			1830				

Date 8/27, 1960

APPROVED J. E. Allen, Owner

By C. R. Raton
(Title)