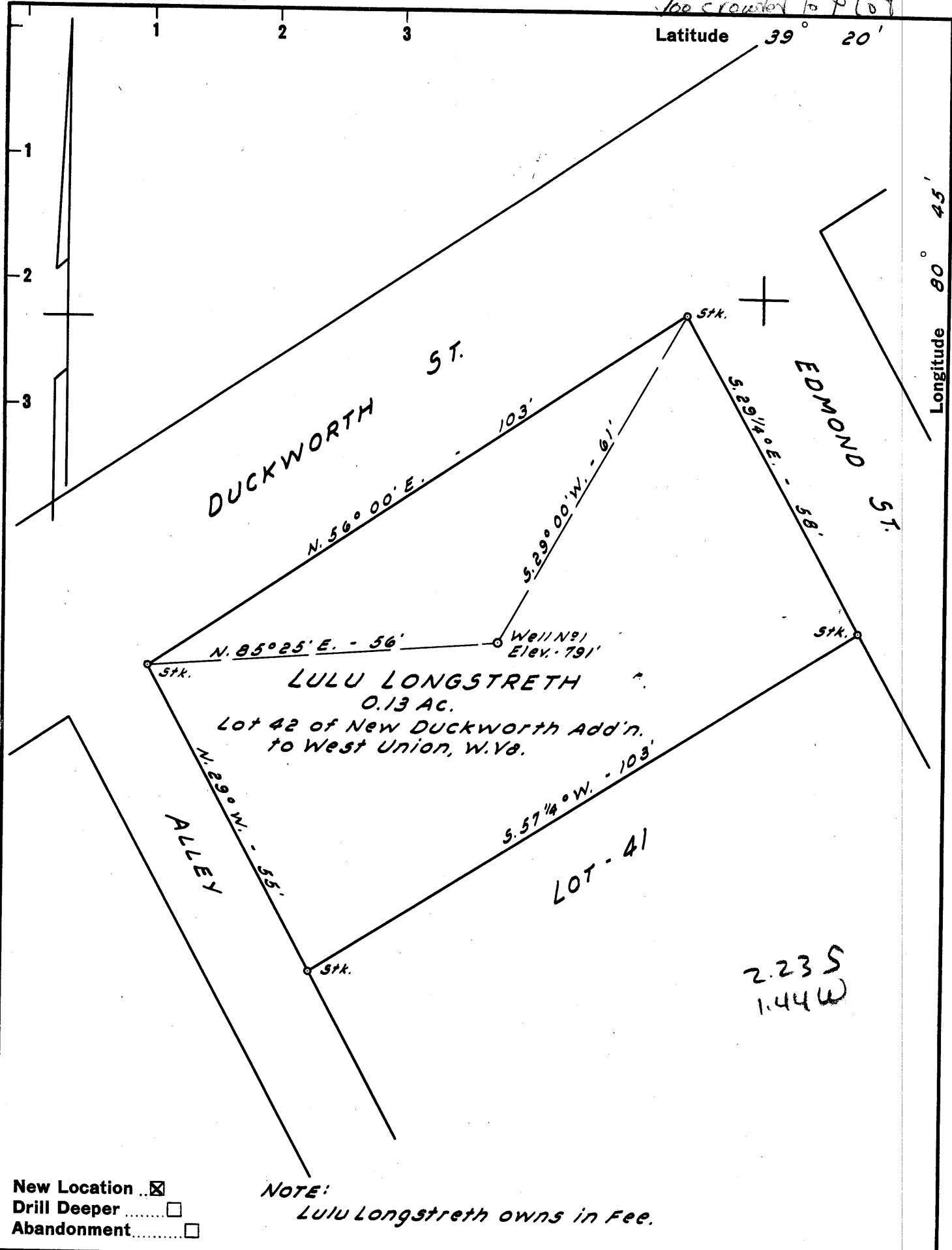


Too crowded to plot

Latitude 39° 20'

Longitude 80° 45'



New Location    
 Drill Deeper    
 Abandonment

NOTE:   
 Lulu Longstreth owns in Fee.

Company ALLEN & BRUKENFELD   
 Address BOX 176 WEST UNION, W. VA.   
 Farm LULU LONGSTRETH   
 Tract \_\_\_\_\_ Acres 0.13 Lease No. \_\_\_\_\_   
 Well (Farm) No. 1 Serial No. \_\_\_\_\_   
 Elevation (Spirit Level) 791'   
 Quadrangle WEST UNION SE   
 County DODDRIDGE District WEST UNION   
 Engineer JOHN W. HAMILTON   
 Engineer's Registration No. 2274   
 File No. \_\_\_\_\_ Drawing No. \_\_\_\_\_   
 Date APRIL 20, 1960 Scale 1" = 20'

STATE OF WEST VIRGINIA   
 DEPARTMENT OF MINES   
 OIL AND GAS DIVISION   
 CHARLESTON

WELL LOCATION MAP   
 FILE NO. Dod-366

+ Denotes location of well on United States Topographic Maps, scale 1 to 62,500, latitude and longitude lines being represented by border lines as shown.   
 - Denotes one inch spaces on border line of original tracing.