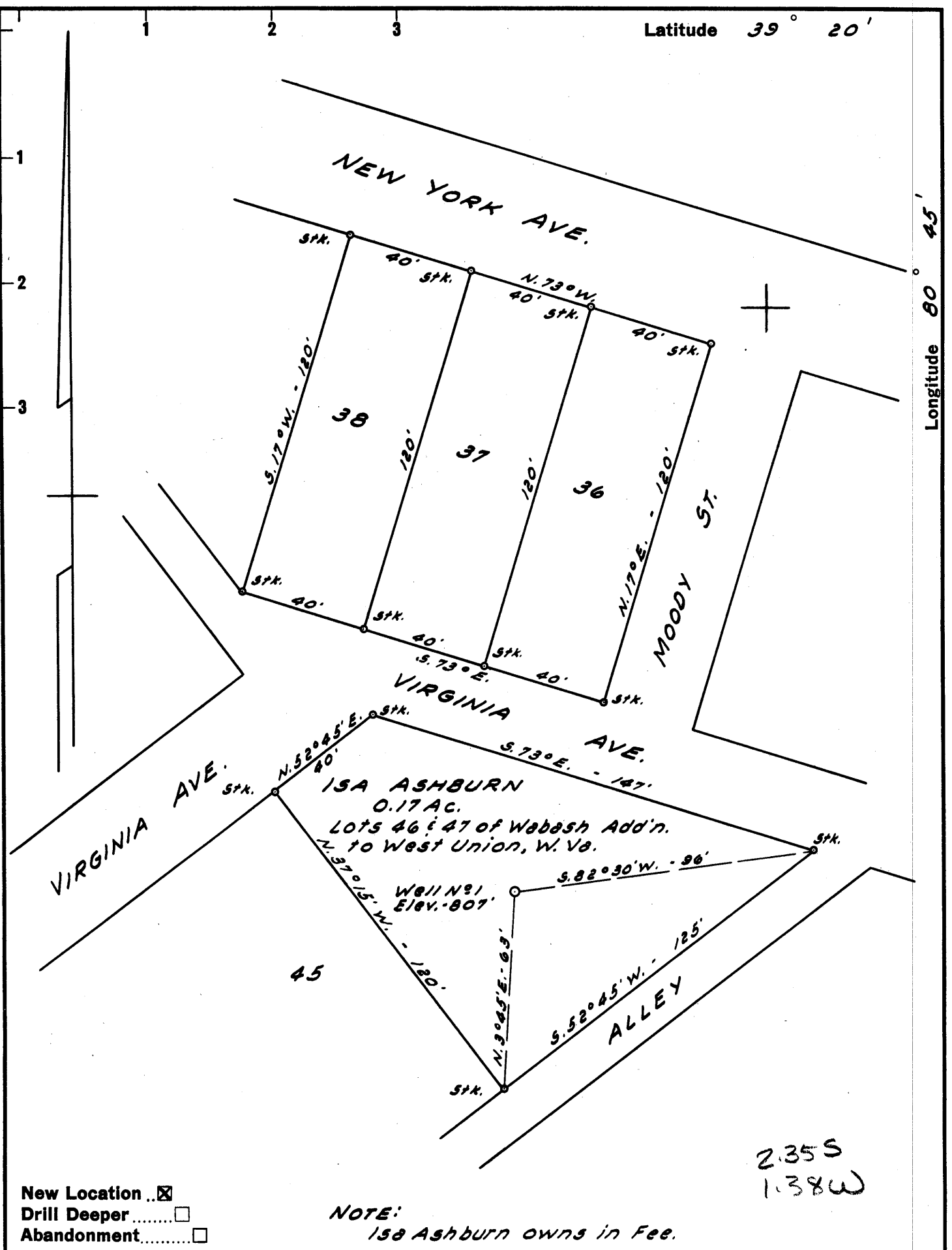


Latitude 39° 20'

Longitude 80° 45'



New Location
 Drill Deeper
 Abandonment

NOTE:
 15A Ashburn owns in Fee.

Company DALE COTTRILL & LEON BEAVER
 Address 103 KIBLER ST. WILLIAMSTOWN, W. VA.
 Farm 15A ASHBURN
 Tract _____ Acres 0.17 Lease No. _____
 Well (Farm) No. 1 Serial No. _____
 Elevation (Spirit Level) 807'
 Quadrangle WEST UNION - 52E
 County DODDRIDGE District WEST UNION
 Engineer JOHN W. HAMILTON
 Engineer's Registration No. 2274
 File No. _____ Drawing No. _____
 Date MAR. 27, 1960 Scale 1" = 40'

STATE OF WEST VIRGINIA
 DEPARTMENT OF MINES
 OIL AND GAS DIVISION
 CHARLESTON

WELL LOCATION MAP
 FILE NO. DOD-337

+ Denotes location of well on United States Topographic Maps, scale 1 to 62,500, latitude and longitude lines being represented by border lines as shown.

- Denotes one inch spaces on border line of original tracing.

too crowded to plot