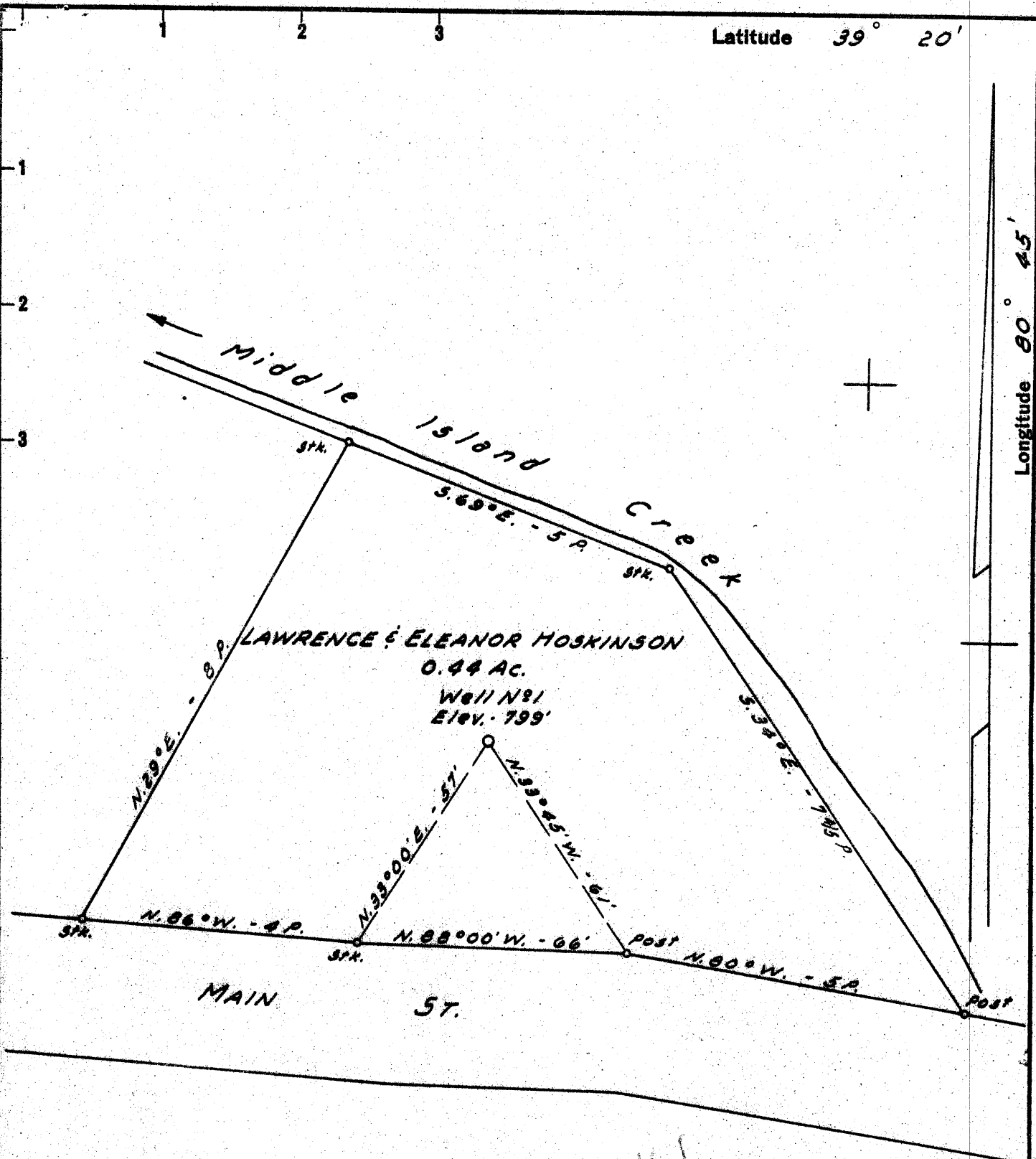


Latitude 39° 20'

Longitude 80° 45'



2645

- Drill Deeper
- New Location
- Drill Deeper
- Abandonment

NOTE:
Lawrence & Eleanor Hoskinson own in Fee

Company E. B. GUM & ASSOCIATES

Address WEST UNION, W. VA.

Farm LAWRENCE & ELEANOR HOSKINSON

Tract _____ Acres 0.44 Lease No. _____

Well (Farm) No. 1 Serial No. _____

Elevation (Spirit Level) 799'

Quadrangle WEST UNION SE

County DODDRIDGE District WEST UNION

Engineer JOHN W. HAMILTON

Engineer's Registration No. 2274

File No. _____ Drawing No. _____

Date MAR. 20, 1960 Scale 1" = 2 POLES

STATE OF WEST VIRGINIA
DEPARTMENT OF MINES
OIL AND GAS DIVISION
CHARLESTON

WELL LOCATION MAP
FILE NO. 202-331-00

+ Denotes location of well on United States Topographic Maps, scale 1 to 62,500, latitude and longitude lines being represented by border lines as shown.

- Denotes one inch spaces on border line of original tracing.



STATE OF WEST VIRGINIA
DEPARTMENT OF MINES
OIL AND GAS DIVISION 5

Quadrangle WEST UNION
Permit No. DOD 331

WELL RECORD

Oil or Gas Well GAS
(KIND)

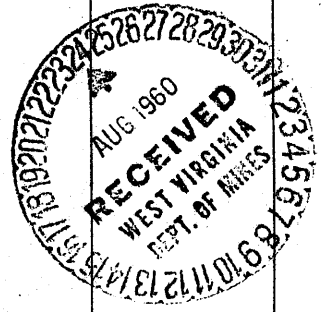
Company E. B. GUM & ASSOCIATES
Address WEST UNION W. VA.
Farm LAWRENCE HOSKINSON Acres 1/4
Location (waters) MIDDLE ISLAND CREEK
Well No. 1 Elev. 799
District WEST UNION County DODDRIDGE
The surface of tract is owned in fee by LAWRENCE HOSKINSON
Address WEST UNION
Mineral rights are owned by SAME
Address WEST UNION
Drilling commenced April 7, 1960
Drilling completed June 25, 1960
Date Shot From To
With
Open Flow /10ths Water in Inch
/10ths Merc. in Inch
Volume Cu. Ft.
Rock Pressure lbs. hrs.
Oil bbls., 1st 24 hrs.
WELL ACIDIZED
WELL FRACTURED

Casing and Tubing	Used in Drilling	Left in Well	Packers
Size			Kind of Packer
16			
13	57		
	325		Size of
8 3/4	896		
6 3/4			Depth set
5 3/16		1662'	
3			Perf. top
2			Perf. bottom
Liners Used			Perf. top
			Perf. bottom

CASING CEMENTED 5-3/16 SIZE 1662' No. Ft. Date
COAL WAS ENCOUNTERED AT FEET INCHES
FEET INCHES FEET INCHES
FEET INCHES FEET INCHES

RESULT AFTER TREATMENT
ROCK PRESSURE AFTER TREATMENT 450# - 12 hours
Fresh Water 75 Feet Salt Water none Feet

Formation	Color	Hard or Soft	Top	Bottom	Oil, Gas or Water	Depth	Remarks
CLAY			0	25			
LIME SHELL			25	35			
SLATE CK			35	50			
RED ROCK			50	75			
SLATE & SHELLS			75	100			
SLATE GREY			100	125			
RED ROCK			125	140			
SLATE GREY			140	160			
RED ROCK			160	170			
SLATE GREY			170	190			
RED ROCK			190	235			
SLATE			235	245			
LIME GREY			245	300			
LIME DARK			300	320			
SLATE RED GRAY			320	440			
RED ROCK			440	480			
SLATE GRAY			480	500			
LIME			500	515			
SLATE GRAY			515	550			
LIME			550	565			
RED ROCK			565	570 575			
LIME SHELLS			575	580			
SLATE			580	595			
LIME			595	605			
SLATE			605	630			
RED ROCK			630	640			
SLATE			640	653			



Formation	Color	Hard or Soft	Top 5	Bottom	Oil, Gas or Water	Depth Found	Remarks
SAND			653	680	GAS		665 MCF
SLATE			680	700			
COAL			700	705			
SLATE			705	750			
LIME			750	760			
SAND			760	765			
SLATE			765	895			
LIME			895	955			
SLATE			955	969x			
SAND			969	1005			
SLATE			1005	1110			
SAND			1110	1165			
SLATE			1165	1207			
SAND			1207	1255			
SLATE			1255	1295			
SAND			1295	1335			
SLATE			1335	1365			
SAND			1365	1407			
SLATE			1407	1445			
SAND			1445	1538	GAS & OIL 1485	SHOWN	
SLATE			1538	1570			
LIME			1570	1597			
PENCIL CAVE			1597	1605	GAS	1710 & 1740	
BIG LIME			1605	1690			
BIG INJUN SAND			1690	1775			
SLATE			1775	1813			

Date _____, 19____

APPROVED _____, Owner

By _____ (Title)



STATE OF WEST VIRGINIA
DEPARTMENT OF MINES
OIL AND GAS DIVISION

4
WELL RECORD

Quadrangle West Union,
Permit No. DOD 331 D

Oil or Gas Well Gas
(KIND) oil show

Company E. B. Gum, Wellino Associates
Address West Union, W. Va.
Farm Lawrence & Eleanor Hoskinson Acres 1/4th
Location (waters) Middles Island Creek
Well No. L 799 Elev. 799
District West Union County Doddridge
The surface of tract is owned in fee by L. & E. Hoskinson Address West Union,
Mineral rights are owned by Same Address _____

Drilling commenced May 1 - 1967
Drilling completed May 30 - 1967
Date Shot _____ From _____ To _____
With _____

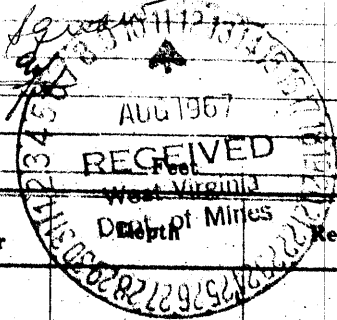
Open Flow _____ /10ths Water in _____ Inch
_____ /10ths Merc. in _____ Inch
Volume 100,000 Cu. Ft.
Rock Pressure _____ lbs. _____ hrs.
Oil _____ bbls., 1st 24 hrs.

WELL ACIDIZED _____
WELL FRACTURED _____
RESULT AFTER TREATMENT _____
ROCK PRESSURE AFTER TREATMENT _____
Fresh Water _____ Feet. Salt Water _____

Casing and Tubing	Used in Drilling	Left in Well	Packers
Size			
16			Kind of Packer
13	57		
10	325		Size of
8 1/4	896		
6 5/8			Depth set
5 3/16			
3			Perf. top
2			Perf. bottom
Liners Used			Perf. top
			Perf. bottom

CASING CEMENTED _____ SIZE _____ No. Ft. _____
COAL WAS ENCOUNTERED AT 1700 FEET _____ INCHES
1700 FEET _____ INCHES FEET _____ INCHES
FEET _____ INCHES FEET _____ INCHES

Formation	Color	Hard or Soft	Top	Bottom	Oil, Gas or Water	Remarks
Clay		0	25			
Lime Shell		25	35			
Slate		35	50			
Red Rock		50	75			
Slate & Shells		75	100			
Slate	Grey	100	125			
Red Rock		125	140			
Slate	Grey	140	160			
Red Rock		160	170			
Slate	Grey	170	190			
Red Rock		190	235			
Slate		235	245			
Lime	Grey	245	300			
Lime	Dark	300	320			
Slate	Grey	320	440			
Red Rock		440	480			
Slate		480	500			
Lime		500	515			
Slate	Grey	515	550			
Lime		550	565			
Red Rock		565	575			
Lime Shells		575	580			
Lime & Slate		580	595			
Lime		595	605			
Slate		605	630			
Red Rock		630	640			
Slate		640	653			
Sand		653	680	Gas		



(over)

Formation	Color	Hard or Soft	Top ⁴	Bottom	Oil, Gas or Water	Depth Found	Remarks
Slate				7000			
Coal			700	705			
Slate			705	750			
Lime			750	760			
Sand			760	765			
Slate			765	895			
Lime			895	95			
Slate			955	965			
Sand			965	1005			
Slate			1005	1110			
Sand			1110	1165			
Slate			1165	1207			
Sand			1207	1255			
Slate			1255	1295			
Sand			1295	1335			
Slate			1335	1365			
Sand			1365	1407			
Slate			1407	1445			
Sand			1445	1538	Gas & Oil	1445	shown
Slate			1538	1570			
Lime			1570	1597			
Pencil Cave			1597	1605			
Big Lime			1605	1690			
Big Injun Sand			1690	1775	Gas	1710 & 1740 1770	
Deepening Record:			1775	1813			
Slate			1813	1835			
Slate & Shells			1835	2335			
Slate & Shells			2335	2341	Small Oil & Gas	2335	
Sand			2341	2418			
Slate				1813			
				665			
				new			
				ftg.			

Date _____, 19__

APPROVED E. B. Gum & Associates, Own

By E. B. Gum, Agent

(Title)