

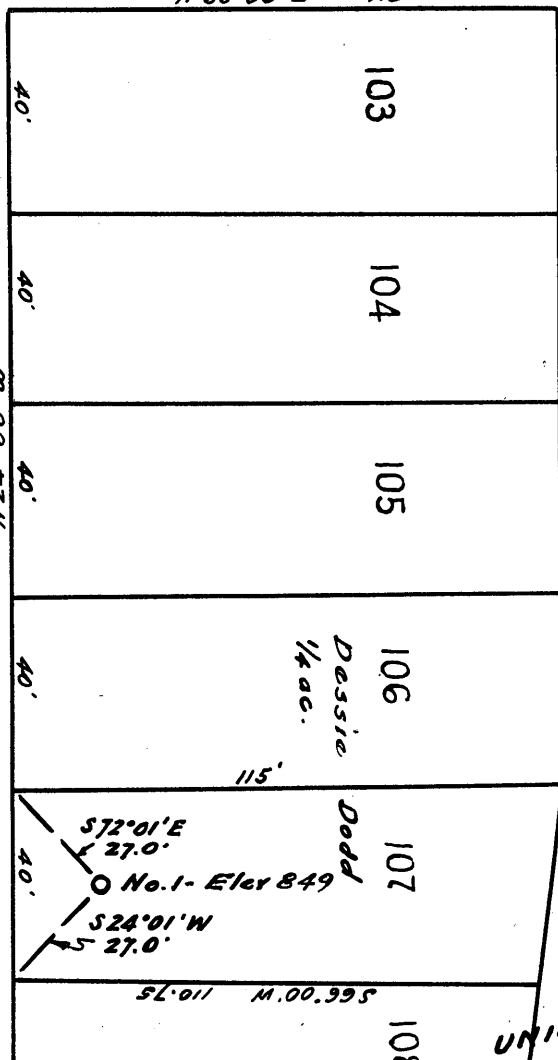
Latitude 39 20'

Longitude 80 45'

### HOPE STREET

JEFFERSON STREET

LINCOLN STREET



TOWN

No coal  
Surface owned by Dessie Dodd, Doddridge  
County Clerk, West Union, W. Va.

2525  
1.53W

- New Location.
- Drill Deeper.....
- Redrill.....
- Abandonment.....

Company A.M. CARLSON  
 Address 510 Union Trust Building, Parkersburg, West Va.  
 Farm Dessie Dodd  
 Tract \_\_\_\_\_ Acres 1/4 Lease No. \_\_\_\_\_  
 Well (Farm) No. One Serial No. \_\_\_\_\_  
 Elevation (Spirit Level) 849  
 Quadrangle West Union SE  
 County Doddridge District West Union  
 Engineer W. A. [Signature]  
 Engineer's Registration No. 1227  
 File No. \_\_\_\_\_ Drawing No. \_\_\_\_\_  
 Date March, 1960 Scale 1" = 40'

STATE OF WEST VIRGINIA  
DEPARTMENT OF MINES  
OIL AND GAS DIVISION  
CHARLESTON

### WELL LOCATION MAP

FILE NO. DOD-319

+ Denotes location of well on United States Topographic Maps, scale 1 to 62,500, latitude and longitude lines being represented by border lines as shown.

— Denotes one inch spaces on border line of original tracing.

Too crowded to plot