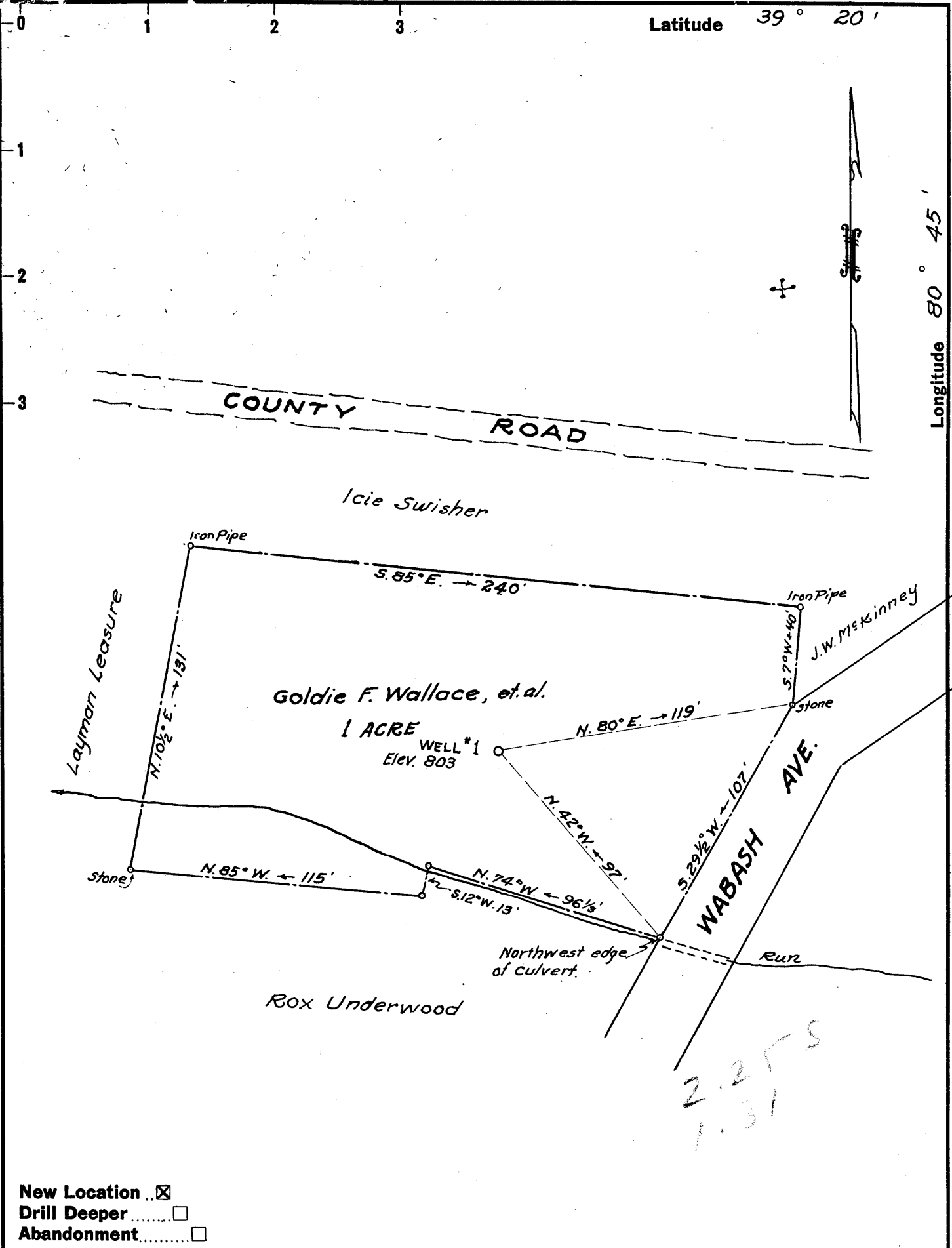


Latitude 39° 20'

Longitude 80° 45'



New Location   
 Drill Deeper   
 Abandonment

Company Doris G. Fuel Co. (R.A. Baker, Agent)  
 Address 23 Virginia Hill Ave. Alexandria, Va.  
 Farm Goldie F. Wallace, et al.  
 Tract \_\_\_\_\_ Acres 1 Lease No. \_\_\_\_\_  
 Well (Farm) No. 1 Serial No. \_\_\_\_\_  
 Elevation (Spirit Level) 803  
 Quadrangle West Union - SE  
 County Doddridge District West Union  
 Engineer Parker E. Peter  
Field data by W.P. Ireland  
 Engineer's Registration No. 485  
 File No. \_\_\_\_\_ Drawing No. \_\_\_\_\_  
 Date March 9, 1960 Scale 1" = 50'

STATE OF WEST VIRGINIA  
 DEPARTMENT OF MINES  
 OIL AND GAS DIVISION  
 CHARLESTON

**WELL LOCATION MAP**  
 FILE NO. D00-313

+ Denotes location of well on United States Topographic Maps, scale 1 to 62,500, latitude and longitude lines being represented by border lines as shown.

- Denotes one inch spaces on border line of original tracing.

6-6 77



STATE OF WEST VIRGINIA  
DEPARTMENT OF MINES  
OIL AND GAS DIVISION

Quadrangle West Union

WELL RECORD

Permit No. DOD 313

Oil or Gas Well Gas  
(KIND)

Company Doris "G" Fuel Company  
Address 3620 S. Roundhill Rd., Alexandria, Va.  
Farm Goldie F. Wallace (Lots) Acres one  
Location (waters) Middle Island Creek  
Well No. One Elev. 803'  
District West Union County Doddridge  
The surface of tract is owned in fee by Goldie F. Wallace, et al. Address West Union, W. Va.  
Mineral rights are owned by Goldie F. Wallace, et al. Address West Union, W. Va.  
Drilling commenced 23 March 1960  
Drilling completed 21 April 1960  
Date Shot N.A. From \_\_\_\_\_ To \_\_\_\_\_  
With N.A.  
Open Flow 12 /10ths Water in Two Inch  
\_\_\_\_\_/10ths Merc. in \_\_\_\_\_ Inch  
Volume 146,000 Cu. Ft.  
Rock Pressure 190 lbs. 15 hrs.  
Oil Small Show bbls., 1st 24 hrs.  
WELL ACIDIZED 1000 Gals. Reg.

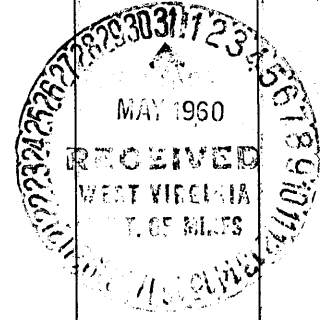
Casing and Tubing	Used in Drilling	Left in Well	Packers
Size			Kind of Packer
16			<u>None</u>
13			Size of
10	<u>172'</u>		Depth set
8 1/4	<u>375'</u>		Perf. top
6 3/8	<u>1034'</u>		Perf. bottom
5 3/16		<u>1742'</u>	Perf. top
3			Perf. bottom
2			
Liners Used			

CASING CEMENTED 5 1/2" SIZE 250' No. Ft. 13 Apr '60 Date  
15 lbs cement - 500# 'Hel' - Greater Service

COAL WAS ENCOUNTERED AT None FEET \_\_\_\_\_ INCHES  
\_\_\_\_ FEET \_\_\_\_\_ INCHES FEET \_\_\_\_\_ INCHES  
\_\_\_\_ FEET \_\_\_\_\_ INCHES FEET \_\_\_\_\_ INCHES

WELL FRACTURED Sand and Water by Halliburton (Open Hole) 23 April 1960  
14,000 lbs sand. Penetrated sand at 2000 #/ls PSI.  
RESULT AFTER TREATMENT 12/10 wate thru 3". 328,000 cu.ft.  
ROCK PRESSURE AFTER TREATMENT 487 lbs. in 13 hours  
Fresh Water None Feet \_\_\_\_\_ Salt Water None Feet \_\_\_\_\_

Formation	Color	Hard or Soft	Top	Bottom	Oil, Gas or Water	Depth	Remarks
Soil	Black	Soft	0	8			
Sand	Light	"	8	14			
Red Rock	Red	Medium	14	38			
Slate	Dark	"	38	53			
Rock	Red	"	53	80			
Sand	Light	Soft	80	105			
Slate	Black	"	105	117			
Slate	White	"	117	130			
Rock	Red	Medium	130	136			
Lime	Grey	Hard	136	150			
Rock	Red	Medium	150	157			
Sand	Light	Soft	157	200			
Rock	Red	Medium	200	235			
Lime/ Shells	Grey	Hard	235	310			
Rock	Red	Medium	310	328			
Slate/ Shells	Dark	Soft	328	365			
Lime	Grey	Hard	365	390			
Slate/ Shells	Dark	Soft	390	470			
Lime	Grey	Hard	470 50	500			
Sand	Light	Soft	500	506			
Slate/ Shells	Dark	Soft	506	538			
Rock	Red	Medium	538	550			
Slate/ Shells	Dark	Soft	550	638			
Sand	Light	Soft	638	647			
Slate/ Shells	Dark	Soft	647	700			
Rock	Red	Medium	700	708			
Lime/ Slate	Grey	Hard	708	795			
Sand	Light	Soft	795	810			
Slate/ Shells	Dark	Soft	810	895			



8 1/2" Casing set at 375'

Formation	Color	Hard or Soft	Top /	Bottom	Oil, Gas or Water	Depth Found	Remarks
Sand/Lime	Grey	Medium	895	926			
Lime/Slate	Dark	"	926	1044			
Big D Sand	Light	Soft	1044	1095			6 5/8" casing set @ 1034'
Slate	Black	"	1095	1100			
Lime/Shells	Grey	Medium	1100	1140			
Sand	Light	Soft	1140	1154			
Slate	Black	"	1154	1162			
Lime/Slate	White	Medium	1162	1187			
Sand	Light	Soft	1187	1271			
Slate/Shells	Soft	Dark	1271	1292			
Salt Sand	Light	Soft	1292	1345			
Slate/Shells	Soft	Dark	1345	1370			
Salt Sand	Light	Soft	1370	1475			
Slate	Dark	"	1475	1478			
Lime	Dark	Hard	1478	1491			
Salt Sand	Light	Medium	1491	1522			
Lime	Dark	Hard	1522	1534			
Slate	Black	Soft	1534	1541			
Lime	Dark	Hard	1541	1553			
Sand, Maxon	Light	Soft	1553	1600			
Slate/Shells	Soft	Dark	1600	1637			
Lime	Grey	Hard	1637	1659			
Sand	Light	Soft	1659	1670			
Lime/Shells	Grey	Medium	1670	1679			
Big Lime	Grey	Hard	1679	1754			
Sand, Injun	Light	Soft	1754	1791	Gas	1761-1767	15/10 W 1"
Slate	Dark	Medium	1791	1792			
Sand/Lime	Dark	Hard	1792	1801			
Sand	Light	Medium	1801	1847	Gas	1843-1847	12/10 W 2"
Slate	Dark	"	1847	1879	Oil Show	1843-1847	Shut Down.

Date 27 May 1960  
APPROVED Doris "G" Fuel Company, Owner  
Robert H. Baker  
By \_\_\_\_\_ Agent (Title)