

New Location:   
 Drill Deeper.....  
 Redrill.....  
 Abandonment..... - 2-25-75

No coal  
 Surface: Roy Smith  
 West Union  
 W. Va.

UNITED DRILLING & EXPLORATION CO. - WEST UNION, W.VA.  
 Company ~~SIBERT & SMITH~~  
 Address ~~2005 West Union, W. Va.~~  
 Farm Claude Smith  
 Tract \_\_\_\_\_ Acres 90 ac. Lease No. \_\_\_\_\_  
 Well (Farm) No. One Serial No. \_\_\_\_\_  
 Elevation (Spirit Level) 804  
 Quadrangle West Union SE  
 County Doddridge District West Union  
 Engineer W. H. Blair Jr.  
 Engineer's Registration No. 1227  
 File No. \_\_\_\_\_ Drawing No. \_\_\_\_\_  
 Date Feb. 1960 Scale 1" = 20 p.

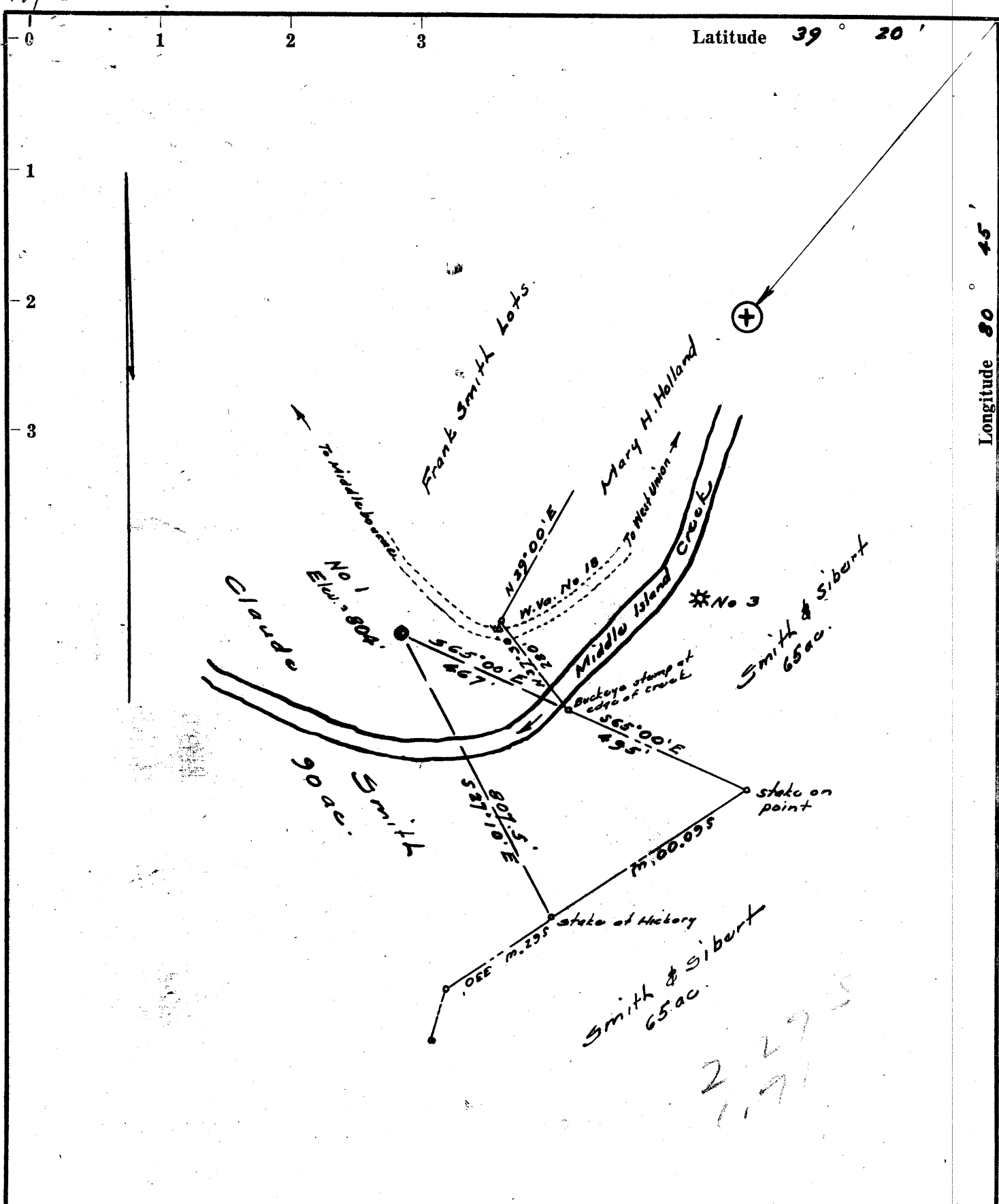
STATE OF WEST VIRGINIA  
 DEPARTMENT OF MINES  
 OIL AND GAS DIVISION  
 CHARLESTON

**WELL LOCATION MAP**  
 FILE NO. DOD-310-P

+ Denotes location of well on United States Topographic Maps, scale 1 to 62,500, latitude and longitude lines being represented by border lines as shown.

— Denotes one inch spaces on border line of original tracing.

N 7-017



- New Location.
- Drill Deeper.....
- Redrill.....
- Abandonment.....

No coal  
 Surface : Roy Smith  
 West Union  
 W. Va.

Company SIBERT & SMITH  
 Address Box 205, West Union, W. Va.  
 Farm Claude Smith  
 Tract Acres 90 ac. Lease No. \_\_\_\_\_  
 Well (Farm) No. One Serial No. \_\_\_\_\_  
 Elevation (Spirit Level) 804  
 Quadrangle West Union - SE  
 County Doddridge District West Union  
 Engineer W. H. Blaine Jr.  
 Engineer's Registration No. 1227  
 File No. \_\_\_\_\_ Drawing No. \_\_\_\_\_  
 Date Feb. 1960 Scale 1" = 200'

STATE OF WEST VIRGINIA  
 DEPARTMENT OF MINES  
 OIL AND GAS DIVISION  
 CHARLESTON

**WELL LOCATION MAP**  
 FILE NO. DOD-310

+ Denotes location of well on United States Topographic Maps, scale 1 to 62,500, latitude and longitude lines being represented by border lines as shown.  
 — Denotes one inch spaces on border line of original tracing.



*Sibert & Smith #5*

STATE OF WEST VIRGINIA  
DEPARTMENT OF MINES  
OIL AND GAS DIVISION /

Quadrangle West Union

WELL RECORD

Oil or Gas Well Oil & Gas  
(KIND)

Permit No. DOD-310

Company Sibert and Smith  
Address c/o J.M.L. Smith Box 205  
Farm Claud F. Smith Lease Acres 90  
Location (waters) Middle Island Creek  
Well No. I Elev. 804'  
District West Union County Doddridge  
The surface of tract is owned in fee by \_\_\_\_\_  
Address \_\_\_\_\_  
Mineral rights are owned by Claud F. Smith  
West Union Address West Union, W. Va.  
Drilling commenced March 15th 1960  
Drilling completed April 3-1960  
Date Shot \_\_\_\_\_ From \_\_\_\_\_ To \_\_\_\_\_  
With \_\_\_\_\_  
Open Flow 106/10ths Water in 2" Inch  
~~206~~/10ths Merc. in \_\_\_\_\_ Inch  
Volume 875 thousand - - Cu. Ft.  
Rock Pressure 850 lbs. twelve hrs.  
Oil Flowd forty feet above mask. in \_\_\_\_\_, 1st 24 hrs.  
WELL ACIDIZED \_\_\_\_\_

Casing and Tubing	Used in Drilling	Left in Well	Packers
Size			Kind of Packer
16			
13			
10	I0	I0	Size of
8 1/4	336		
6 5/8	I007		Depth set
5 3/16		I730	
3			Perf. top
2			Perf. bottom
Liners Used			Perf. top
			Perf. bottom

CASING CEMENTED 250 SIZE 5 1/2 No. Ft. Date March 29th 1960 (15 hrs (outland) end)  
400 ft 570 gcl  
COAL WAS ENCOUNTERED AT \_\_\_\_\_ FEET \_\_\_\_\_ INCHES  
Horaton seam  
\_\_\_\_\_ FEET \_\_\_\_\_ INCHES  
\_\_\_\_\_ FEET \_\_\_\_\_ INCHES

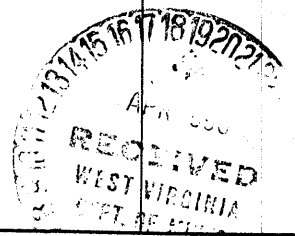
WELL FRACTURED \_\_\_\_\_

RESULT AFTER TREATMENT \_\_\_\_\_

ROCK PRESSURE AFTER TREATMENT \_\_\_\_\_

Fresh Water \_\_\_\_\_ Feet Salt Water \_\_\_\_\_ Feet

Formation	Color	Hard or Soft	Top	Bottom	Oil, Gas or Water	Depth	Remarks
Top Soil			0	I5			
Sand			I5	25			
Red Rock			25	45			
Slate			45	75			
Red Rock			75	I30			
Slate Shell			I30	I40			
Black Slate			I40	I50			
Slate Shells			I50	I75			
Lime			I75	I92			
Red Rock			I92	2I0			
Slate			2I0	226			
Red Rock			226	277			
Slate Shell			277	340			
Red Rock			240	360			
Slate Shell			360	480			
Red Rock			480	495			
Slate Shell			495	540			
Red Rock			540	575			
Slate Shell			575	6I8			
Red Rock			6I8	680			
Lime Gritty			680	700			
Slate Shell			700	725			
Black Slate			725	755			
Red Rock			755	820			
Black Slate			820	840			
Slate Shell			840	987			
Pink Rock			987	994			
Slate shell			994	I007			
Lime			I007	I038			
Slate			I038	I075			



Formation	Color	Hard or Soft	Top /	Bottom	Oil, Gas or Water	Depth Found	Remarks
-----------	-------	--------------	-------	--------	-------------------	-------------	---------

Sand			I075	III0			
Slate	shell		III0	II45			
Sand			II45	II75			
Black Slate			II75	I200			
Gritty Lime			I200	I2I5			
Sand			I2I5	I290			
Slate			I290	I3I0			
Sand			I3I0	I360			
Slate	shells		I360	I445			
Sand			I445	I507			
Slate	shell		I507	I629			
Red lime			I629	I647			
Broken Lime			-I647	I680			
Sand			I680	I690			
Pencil cave			I690	I696			
Big lime			-I696	I770			
Sand			I770	I775	Gas I775 to		
Sand			I775	I777			
Sand			I777	I782	Oil		
Sand			I782	I784	Increased Gas & Oil		

Total depth I782