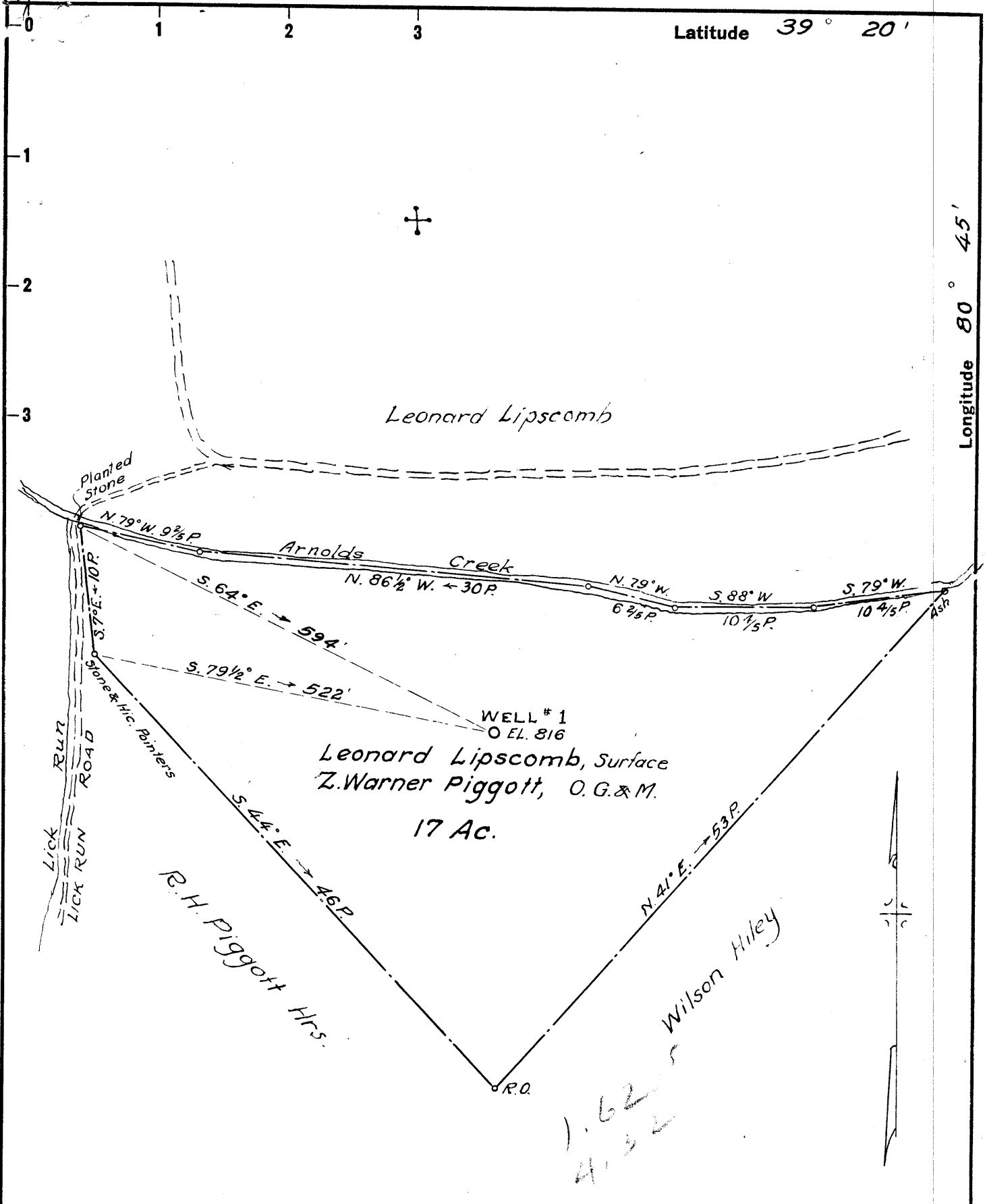


Latitude 39° 20'

Longitude 80° 45'



New Location  Revised  
 Drill Deeper   
 Abandonment

Company Clyde A. Yeater  
 Address 119 13th St., Parkersburg, W. Va.  
 Farm Leonard Lipscomb, Surf.; Z. Warner Piggott, O. G. & M.  
 Tract 1 Acres 17 Lease No. \_\_\_\_\_  
 Well (Farm) No. 1 Serial No. \_\_\_\_\_  
 Elevation (Spirit Level) 816  
 Quadrangle West Union - SE  
 County Doddridge District Central  
 Engineer Parker E. Peters  
 Engineer's Registration No. 485  
W.P. Ireland, Field  
 File No. \_\_\_\_\_ Drawing No. \_\_\_\_\_  
 Date Feb. 15, 1960 Scale 1" = 10 P.

STATE OF WEST VIRGINIA  
 DEPARTMENT OF MINES  
 OIL AND GAS DIVISION  
 CHARLESTON

WELL LOCATION MAP  
 FILE NO. DOD-305

+ Denotes location of well on United States Topographic Maps, scale 1 to 62,500, latitude and longitude lines being represented by border lines as shown.  
 - Denotes one inch spaces on border line of original tracing.

6-6-91



STATE OF WEST VIRGINIA  
DEPARTMENT OF MINES  
OIL AND GAS DIVISION 3

Quadrangle West Union,

WELL RECORD

Permit No DOD-305

Oil or Gas Well Oil & Gas  
(KIND)

Company Clyde A. Yeater  
Address 919-13th. St. Parkersburg, W. Va.  
Farm Lenord Lipscomb Acres 17  
Location (waters) Arnolds Creek  
Well No. I Elev. 816  
District Central County Doddridge  
The surface of tract is owned in fee by Leanord Lipscomb  
Central Station, W. Va. Address \_\_\_\_\_  
Mineral rights are owned by Z. W. Piggott  
Address Parkersburg, W. Va.  
Drilling commenced June 20, 1960 ~~May 31, 1960~~  
Drilling completed July 16, 1960  
Date Shot \_\_\_\_\_ From \_\_\_\_\_ To \_\_\_\_\_  
With \_\_\_\_\_  
Open Flow \_\_\_\_\_ /10ths Water in \_\_\_\_\_ Inch  
\_\_\_\_\_ /10ths Merc. in \_\_\_\_\_ Inch  
Volume 75000 Cu. Ft.  
Rock Pressure \_\_\_\_\_ lbs. \_\_\_\_\_ hrs.  
Oil 3 1/2 bbls., 1st 24 hrs.  
WELL ACIDIZED \_\_\_\_\_

Casing and Tubing	Used in Drilling	Left in Well	Packers
Size			Kind of Packer _____
16			
13			
10	10 in	38 ft 10	Size of _____
8 3/4	8 in		
6 5/8			Depth set _____
5 3/16		18 183I Ft	
3			Perf. top _____
2			Perf. bottom _____
Liners Used			Perf. top _____
<u>30 sks. Cement - 4 sks. Aquagel</u>			Perf. bottom _____
<u>Lawson Cementing Co.</u>			

CASING CEMENTED 5 1/2 SIZE 183I No. Ft. 7-19-60 Date

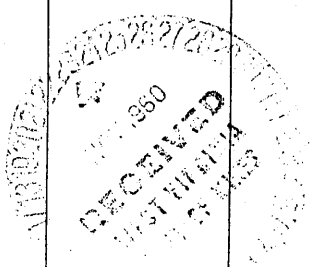
COAL WAS ENCOUNTERED AT \_\_\_\_\_ FEET \_\_\_\_\_ INCHES  
\_\_\_\_\_ FEET \_\_\_\_\_ INCHES FEET \_\_\_\_\_ INCHES  
\_\_\_\_\_ FEET \_\_\_\_\_ INCHES FEET \_\_\_\_\_ INCHES

WELL FRACTURED By Dowell Chemical Co. - July 27th. 1960

RESULT AFTER TREATMENT Increased 3 1/2 bbls. Oil  
ROCK PRESSURE AFTER TREATMENT 100 Lb.

Fresh Water \_\_\_\_\_ Feet Salt Water \_\_\_\_\_ Feet

Formation	Color	Hard or Soft	Top	Bottom	Oil, Gas or Water	Depth	Remarks
Soil			0	4			
Slate	Blue		4	30			
Lime			30	40			
Sand			40	65			
Rock	Red		65	90			
Lime			90	125			
Rock	Red		125	200			
Sand			200	225			
Slate & shells			225	255			
Rock	Red		255	265			
Lime			265	325			
Slate & shells			325	350			
Sand			350	390			
Slate & Shells			390	400			
Sand			400	440			
Slate	Grey		440	445			
Lime			445	612			
Rock	Red		612	655			
Slate & Shells			655	735			
Sand			735	755			
Slate			755	780			
Lime			780	795			
Slate & Shells			795	825			
Rock	Red		825	860			
Dunker Sand			860	875			
Shale & Lime			875	910			
Lime			910	920			
Shale			920	955			
Sand			955	965			
Slate	White		965	980			



Formation	Color	Hard or Soft	Top <sup>3</sup>	Bottom	Oil, Gas or Water	Depth Found	Remarks
Slate	Black		980	994			
Sand			994	1020			
Slate	Grey		1020	1040			
Slate	White		1040	1087			
Sand			1087	1125			
Slate	White		1125	1155			
Sand			1155	1190			
Slate	White		1190	1220			
Sandy Lime		Hard	1220	1270			
Slate & Shells			1270	1315			
Sand			1315	1362			
Slate	Grey		1362	1470			
Sand		Hard	1470	1562			
Slate	Black		1562	1590			
Sand			1590	1628			
Shells & Slate	Black		1628	1643			
Lime & Sand			1643	1660			
Sand			1660	1663			
Lime		Soft	1663	1690			
Rock	Red		1690	1695			
Little Lime			1695	1737			
B.M. Sand			1737	1745			
Pencil Slate			1745	1747			
Big Lime			1747	1824	Gas	1824	
Keener Sand			1824	1826			
Injuin Sand			1826	1890	Gas	1845	
Slate	Black		1890	1925	Gas & Oil	1857-1862	

Date \_\_\_\_\_, 19\_\_

APPROVED \_\_\_\_\_, Owner

By \_\_\_\_\_  
(Title)