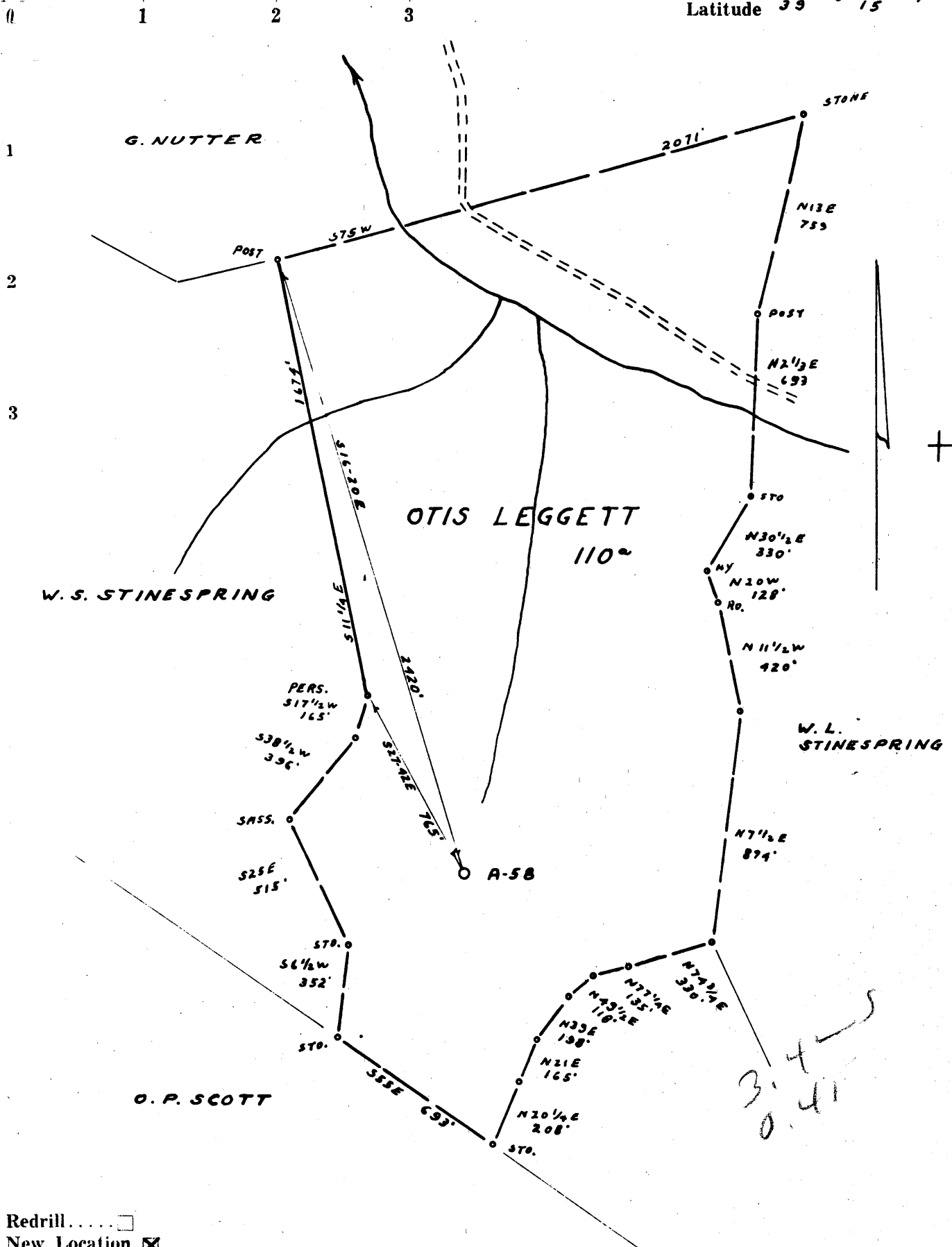


Latitude 39° 15'

Longitude 80° 50'



- Redrill.....
- New Location.
- Drill Deeper.....
- Abandonment.....

Company ALLEGHENY LAND & MINERAL CO.  
 Address CLARKSBURG, W.VA.  
 Farm OTIS LEGGETT  
 Tract \_\_\_\_\_ Acres 110 Lease No. \_\_\_\_\_  
 Well (Farm) No. 1 Serial No. A-58  
 Elevation (Spirit Level) 995' V.A.  
 Quadrangle HOLBROOK NE 12-1-NC  
 County DODDRIDGE District SOUTHWEST  
 Engineer J. D. JEFFRIES  
 Engineer's Registration No. 1084  
 File No. 196/108 Drawing No. \_\_\_\_\_  
 Date 8-8-59 Scale 1" = 500'

STATE OF WEST VIRGINIA  
 DEPARTMENT OF MINES  
 OIL AND GAS DIVISION  
 CHARLESTON

**WELL LOCATION MAP**  
 FILE NO. DOD-284

+ Denotes location of well on United States Topographic Maps, scale 1 to 62,500, latitude and longitude lines being represented by border lines as shown.

— Denotes one inch spaces on border line of original tracing.

RDMC

6-6 133



STATE OF WEST VIRGINIA  
DEPARTMENT OF MINES  
OIL AND GAS DIVISION 5

WELL RECORD

Permit No. Dod-284

Oil or Gas Well Gas  
(KIND)

Company Allegheny Land & Mineral Co.  
Address Clarksburg, W. Va.  
Farm Otis A. Leggett Acres 110  
Location (waters) Hughes River  
Well No. HA-57 Elev. 995  
District Southwest County Doddridge  
The surface of tract is owned in fee by Otis A. Leggett  
Address Harrisville, W. Va.  
Mineral rights are owned by Same  
Address \_\_\_\_\_  
Drilling commenced 9-2-59  
Drilling completed 9-21-59  
Date Shot \_\_\_\_\_ From \_\_\_\_\_ To \_\_\_\_\_  
With See reverse side  
Open Flow \_\_\_\_\_ /10ths Water in Bullhill Inch  
\_\_\_\_\_ /10ths Merc. in \_\_\_\_\_ Inch  
Volume \_\_\_\_\_ Cu. Ft. Not taken  
Rock Pressure Not taken lbs. \_\_\_\_\_ hrs.  
Oil \_\_\_\_\_ bbls., 1st 24 hrs.  
Fresh water \_\_\_\_\_ feet  
Salt water \_\_\_\_\_ feet

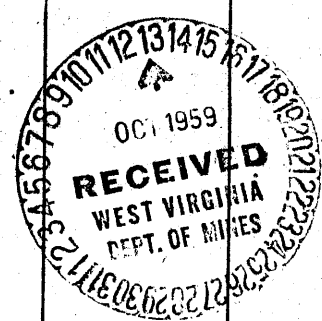
Casing and Tubing	Used in Drilling	Left in Well	Packers
Size			Kind of Packer
16			
18			
10	200		Size of
V 8 1/2	1147		
6 1/2			Depth set
5 3/16			
4 1/2	1981	1981	Perf. top
2			Perf. bottom
Liners Used			Perf. top
			Perf. bottom

CASING CEMENTED Yes SIZE 4 1/2" No. Ft. 1981 Date 9-22-59

COAL WAS ENCOUNTERED AT \_\_\_\_\_ FEET \_\_\_\_\_ INCHES  
\_\_\_\_\_ FEET \_\_\_\_\_ INCHES \_\_\_\_\_ FEET \_\_\_\_\_ INCHES  
\_\_\_\_\_ FEET \_\_\_\_\_ INCHES \_\_\_\_\_ FEET \_\_\_\_\_ INCHES

Formation	Color	Hard or Soft	Top	Bottom	Oil, Gas or Water	Depth Found	Remarks
Clay			0	10			
Sand			10	25			
Slate			25	100			
Red Rock			100	150			
Lime & Sand			150	260			
Slate			260	300			
Red Rock			300	325			
Lime & Sand			325	475			
Red Rock			475	500			
Lime			500	650			
Red Rock			650	735			
Slate & Lime			735	780			
Slate			780	845			
Red Rock			845	885			
Slate & Lime			885	940			
Pink Rock			940	950			
Slate & Lime			950	980			
Sand			980	1020			
Slate & Sand			1020	1050			
Pink Rock			1050	1055			
Slate & Lime			1055	1225			
Sand			1225	1325			
Slate			1325	1350			
Sand			1350	1370			
Slate & Broken Sand			1370	1460			
Dark Slate			1460	1485			
Sand			1485	1542			
Lime & Sand			1542	1575			
Dark Slate			1575	1595			
Lime			1595	1630			
Sand			1630	1680			
Slate & Lime			1680	1695			
Gritty Lime			1695	1730			
Dark Slate			1730	1740			
Slate & Lime			1740	1790			
Lime			1790	1800			
Pencil Cave			1800	1805			
Lime			1805	1899			

After 220M



(Over)

F59

Formation	Color	Hard or Soft	Top <sup>5</sup>	Bottom	Oil, Gas or Water	Depth Found	Remarks
Sand Slate			1899 1960	1960 1981			
Oil & Gas		1838					
Show of gas		1904					
Show of gas		1950					
Fractured 10-1-59 by Halliburton using 500 barrels water.							
Gas after frac. <del>200</del> 220 M cubic feet							
Rock Pressure 600 PSI — 96 lbs							