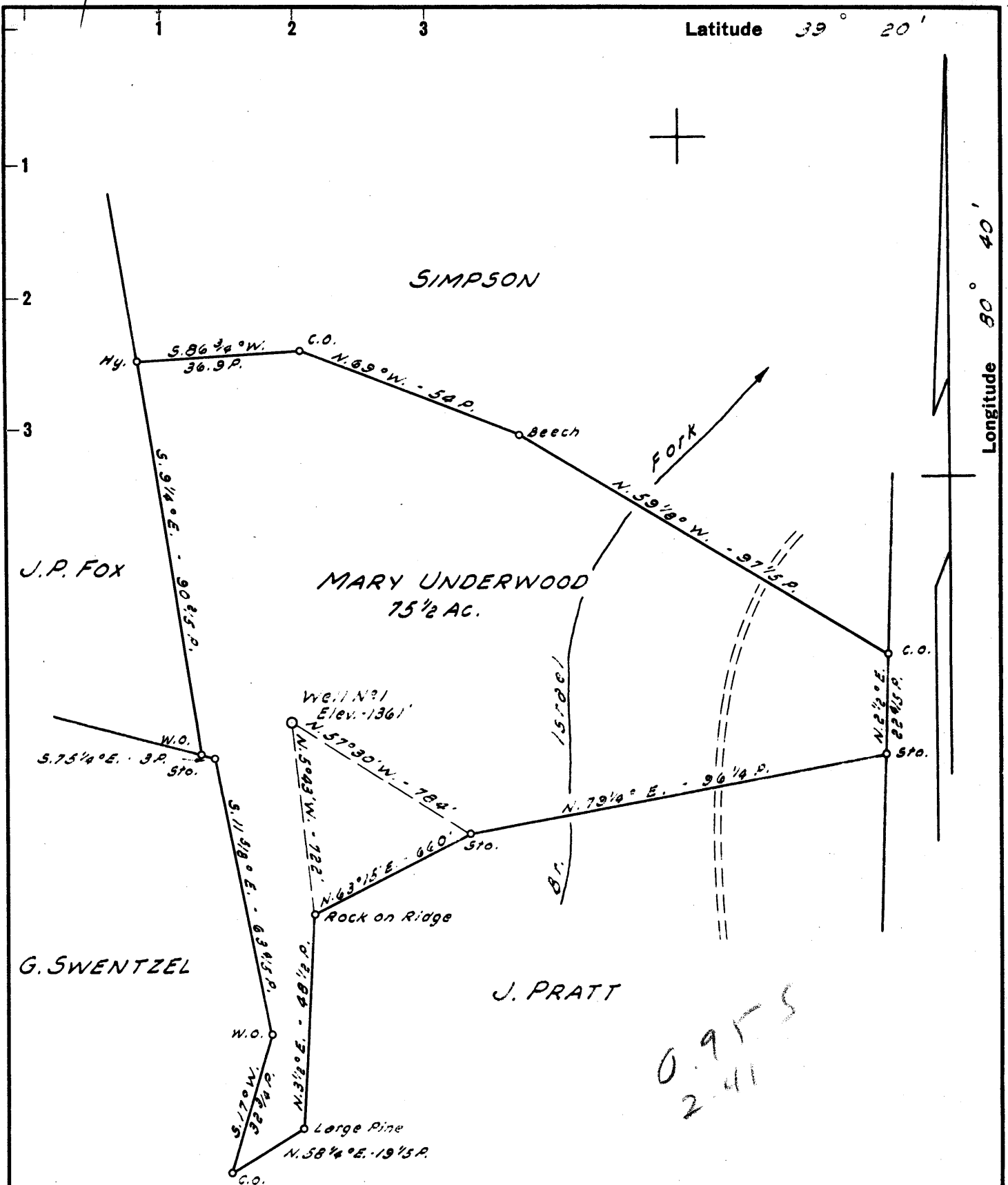


Latitude 39° 20'

Longitude 80° 40'



New Location    
 Drill Deeper    
 Abandonment

NOTE: Mineral Rights owned by Johnson Williams.

Company UNDERWOOD GAS CO.  
 Address CLARENCE POWELL AGT. WEST UNION, W. VA.  
 Farm MARY UNDERWOOD  
 Tract \_\_\_\_\_ Acres 75 1/2 Lease No. \_\_\_\_\_  
 Well (Farm) No. 1 Serial No. \_\_\_\_\_  
 Elevation (Spirit Level) 1361'  
 Quadrangle CENTERPOINT - SW  
 County DODDRIDGE District GRANT  
 Engineer JOHN W. HAMILTON  
 Engineer's Registration No. 2274  
 File No. \_\_\_\_\_ Drawing No. \_\_\_\_\_  
 Date JULY 26, 1959 Scale 1" = 30 POLES

STATE OF WEST VIRGINIA  
 DEPARTMENT OF MINES  
 OIL AND GAS DIVISION  
 CHARLESTON

**WELL LOCATION MAP**  
 FILE NO. DOD-282

+ Denotes location of well on United States Topographic Maps, scale 1 to 62,500, latitude and longitude lines being represented by border lines as shown.

- Denotes one inch spaces on border line of original tracing.

5-6 79



STATE OF WEST VIRGINIA  
DEPARTMENT OF MINES  
OIL AND GAS DIVISION

Quadrangle Centerpoint

Permit No. DOD-282

WELL RECORD

Oil or Gas Well Gas  
(KIND)

Company Underwood Oil & Gas Company  
Address West Union, W. Va.  
Farm Mary Underwood Acres 75-1/2  
Location (waters) Iserals Fork  
Well No. 1 Elev. 1361'  
District Grant County Doddridge  
The surface of tract is owned in fee by Johnson Williams Address West Union  
Mineral rights are owned by Johnson Williams Address West Union  
Drilling commenced August 28th, 1959  
Drilling completed October 20, 1959  
Date Shot \_\_\_\_\_ From \_\_\_\_\_ To \_\_\_\_\_  
With \_\_\_\_\_  
Open Flow 60 /10ths Water in \_\_\_\_\_ Inch  
2 /10ths Merc. in \_\_\_\_\_ Inch  
Volume 2,600,000 Cu. Ft.  
Rock Pressure 430 lbs. 30 min. hrs.  
Oil \_\_\_\_\_ bbls., 1st 24 hrs.  
WELL ACIDIZED \_\_\_\_\_  
WELL FRACTURED \_\_\_\_\_

Casing and Tubing	Used in Drilling	Left in Well	Packers
Size			Kind of Packer
16			
13			
10	477'		Size of
8 1/4	1210'	1210'	
6 5/8	1758'	1758'	Depth set
5 3/16			
3			Perf. top
2			Perf. bottom
Liners Used			Perf. top
			Perf. bottom

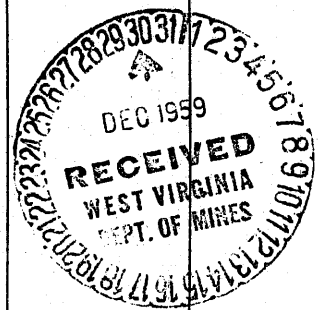
CASING CEMENTED \_\_\_\_\_ SIZE \_\_\_\_\_ No. Ft. \_\_\_\_\_ Date \_\_\_\_\_  
COAL WAS ENCOUNTERED AT \_\_\_\_\_ FEET \_\_\_\_\_ INCHES  
\_\_\_\_\_ FEET \_\_\_\_\_ INCHES \_\_\_\_\_ FEET \_\_\_\_\_ INCHES  
\_\_\_\_\_ FEET \_\_\_\_\_ INCHES \_\_\_\_\_ FEET \_\_\_\_\_ INCHES

RESULT AFTER TREATMENT

ROCK PRESSURE AFTER TREATMENT

Fresh Water 1740' Feet Salt Water \_\_\_\_\_ Feet

Formation	Color	Hard or Soft	Top	Bottom	Oil, Gas or Water	Depth	Remarks
Clay			0'	80'			
Red Rock	Red		80'	115'			
Slate&Shell			115'	180'			
Sand			180'	240'			
Red Rock			240'	410'			
Lime Shells			410'	440'			
Slate			440'	455'			
Red Rock	Red		455'	482'			
Sand			482'	512'			
Lime			512'	522'			
Red Rock	Red		522'	532'			
Lime			532'	625'			
Red Rock	Red		625'	635'			
Lime			635'	650'			
Slate&Shell			650'	685'			
Sand			685'	712'			
Lime			712'	748'			
Slate& Shell			748'	762'			
Lime			762'	787'			
Sand			787'	870'			
Slate			870'	880'			
Lime			880'	925'			
Lime			925'	930'			
Slate	Red		930'	940'			
Lime			940'	975'			
Red Rock	Red		975'	980'			
Slate&Shell			980'	1018'			
Lime		Gritty	1018'	1053'			
Slate& Shell			1053'	1060'			



Formation	Color	Hard or Soft	Top 7	Bottom	Oil, Gas or Water	Depth Found	Remarks
Red Rock	Red	Gritty	1060'	1112'			
Lime			1112'	1160'			
Red Rock	Red		1160'	1170'			
Lime			1170'	1200'			
Sand			1200'	1256'			
Slate&Shells			1256'	1289'			
Sand			1289'	1383'			
Sand			1383'	1430'			
Slate			1430'	1435'			
Lime			1435'	1500'			
Sand			1500'	1575'			
Slate			1575'	1595'			
Sand			1595'	1667'			
Slate			1667'	1675'			
Sand			1675'	1758'		Water	1740' to 1750'
Lime			1758'	1815'			
Sand			1815'	1915'			
Slate&Shells		1915'	1973'		Gas	1996'	
Sand		1973'	2004'		Gas	2004'	