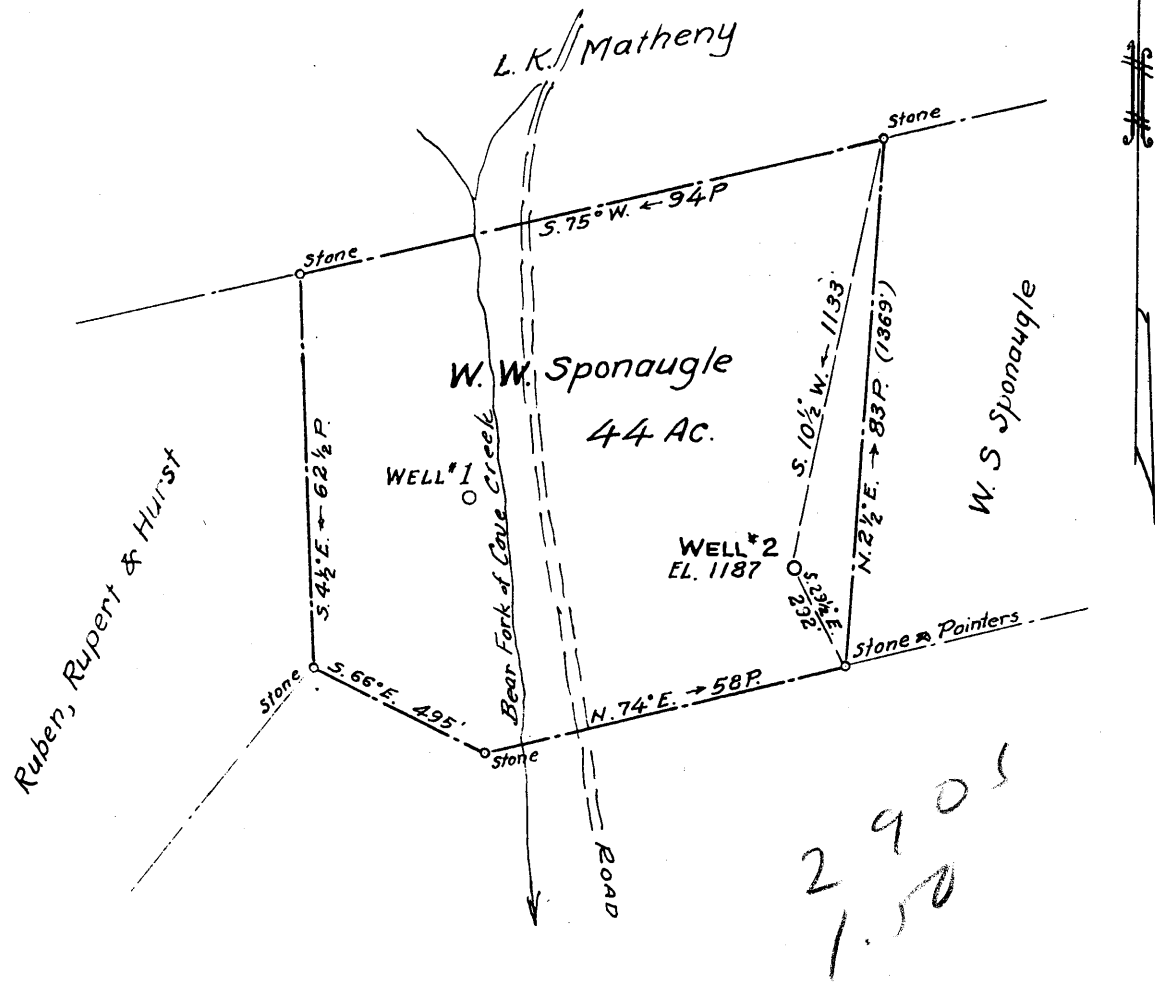


Latitude 39° 10' Longitude 80° 45'



New Location
 Drill Deeper
 Abandonment

Company Doris G. Fuel Co. ~ R.A. Baker, Agt.
 Address 23 Virginia Hill Ave., Alexandria, Va.
 Farm W. W. Sponaugle
 Tract 1 Acres 44 Lease No. _____
 Well (Farm) No. 2 Serial No. _____
 Elevation (Spirit Level) 1187
 Quadrangle Holbrook EC
 County Doddridge District Cove
 Engineer Parker E. Peters
 Engineer's Registration No. 485
W.P. Ireland - field
 File No. _____ Drawing No. _____
 Date June 12, 1959 Scale 1" = 30 P.

STATE OF WEST VIRGINIA
 DEPARTMENT OF MINES
 OIL AND GAS DIVISION
 CHARLESTON

WELL LOCATION MAP
 FILE NO. DOD-279

+ Denotes location of well on United States Topographic Maps, scale 1 to 62,500, latitude and longitude lines being represented by border lines as shown.

- Denotes one inch spaces on border line of original tracing.

6-133



STATE OF WEST VIRGINIA
DEPARTMENT OF MINES
OIL AND GAS DIVISION

Quadrangle Holbrook

Permit No. DOD-279

WELL RECORD

Oil or Gas Well GAS
(KIND)

Company Doris "G" Fuel Co.
Address 3620 S. Roundhill Rd., Alex, Va.
Farm W. W. Sponaugle Acres 44
Location (waters) Bear Fork
Well No. Two (2) Elev. 1187'
District Gove County Doddridge
The surface of tract is owned in fee by L. K. Matheny
Address Troy, W. Va.
Mineral rights are owned by L. K. Matheny & W. W. Sponaugle
Address Troy-Auburn, W. Va.
Drilling commenced 29 July 1959
Drilling completed 9 Sept 1959
Date Shot No From To
With No
Open Flow /10ths Water in Inch
10/10ths Merc. in Two Inch
Volume 492,000 Cu. Ft.
Rock Pressure 400 lbs. 18 hrs.
Oil None bbls., 1st 24 hrs.
WELL ACIDIZED 1000 Gals. Dowell X

Casing and Tubing	Used in Drilling	Left in Well	Packers
Size			
16			Kind of Packer
13	114'		None
10			Size of
8 1/4	413		
6 3/4	1198		Depth set
5 3/16			
3 4 1/2 OD		2178	Perf. top 2096'
2 9 5/8			Perf. bottom 2134'
J-55			Perf. top
Liners Used			Perf. bottom

CASING CEMENTED yes SIZE 4 1/2 OD No. Ft. 380' Date 12 Sept 1959

COAL WAS ENCOUNTERED AT 60 FEET INCHES
 FEET INCHES FEET INCHES
 FEET INCHES FEET INCHES

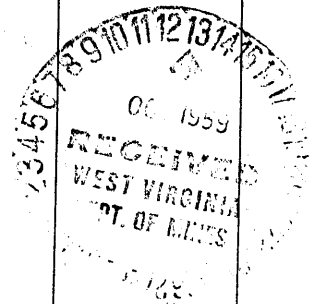
WELL FRACTURED by Dowell Corp. Used 1000 Gals Dowell X Acid, 44,000# Sand, 750 Dbls Water, 90 Perf Balls with 114 perforations. Penetrated Sand at 2100# PSI

RESULT AFTER TREATMENT 20/10ths Merc thru 3". 1,565,000 Cu. Ft.

ROCK PRESSURE AFTER TREATMENT 300#

Fresh Water Feet Salt Water None Feet

Formation	Color	Hard or Soft	Top	Bottom	Oil, Gas or Water	Depth	Remarks
Clay	Red	Soft	0	9'			
Sand Stone	Light	Soft	9	12			
Clay	White	Soft	12	38			
Slate	Dark	Medium	38	60			
Coal&Water		Soft	60	62			
Slate	"	Medium	62	80			Making 2 1/2 Bailers Wa.
Rock	Red	"	80	83			
Lime	Light	Hard	83	88			
Sand	"	Soft	88	102			
Slate/Shells	Grey	Medium	102	153			
Red Rock	Red	Hard	153	260			
Slate/Shells	Grey	Med.	260	290			
Sand	Light	Soft	290	300			
Plate	Grey	Med.	300	310			
Lime	"	Hard	310	320			
Red Rock	Red	Hard	320	335			
Plate	Grey	Medium	335	341			
Sand	Light	Soft	341	351			
Red Rock	Red	Hard	351	387			
Slate/Shells	Grey	Medium	387	548			
Red Rock	Red	Hard	548	556			
Slate/Shells	Grey	Med.	556	700			
Red Rock	Red	Hard	700	820			
Lime/Slate	Grey	Med-Hard	820	945			
Sand	Light	Soft	945	953			
Slate/shells	Grey	Soft	953	1020			
Red Rock	Red	Medium	1020	1057			
Lime/Slate	Grey	Med.	1057	1212			
Sand	Light	Soft	1212	1226			



(over)

✓
F59

Formation	Color	Hard or Soft	Top	Bottom	Oil, Gas or Water	Depth Found	Remarks
Slate/Shell	Grey	Soft	1226	1274			
Sand	Light	Soft	1274	1296			
Slate/Lime	Grey	Medium	1296	1304			
Sand	Light	Soft	1304	1335			
Lime	Light	Hard	1335	1380			
Sand	Light	Soft	1380	1478			
Slate	Dark	Soft	1378	1481			
Sand	Light	Soft	1481	1508			
Slate/Shell	Grey	Soft	1508	1634			
Salt Sand	Light	Soft	1634	1654			
Slate	Black	Soft	1654	1750			
Lime	Dark	Hard	1750	1768			
Sand	Light	Soft	1768	1808			
Slate	Black	Soft	1808	1852			
Lime/Sand	Dark	Medium	1852	1893			
Maxon Sand	Light	Soft	1893	1904			
Slate	Dark	Soft	1904	1911			
Lime	Dark	Hard	1911	1921			
Slate	Dark	Soft	1921	1926			
Gritty Lime	Dark	Hard	1926	1937			
Sand	Light	Soft	1937	1955			
Slate	Dark	Soft	1955	1962			Gas from 1944 to 1955 3/10 Water thru 2"
Big Lime	Grey	Hard	1962	2045			
Injun Sand	Light	Soft	2045	2142			Gas from 2072 to 2077 3/10 Water thru 2" Gas from 2096 to 2106 20/10 Water thru 2" Gas from 2115 to 2142 10/10 Mercury thru 2"

492M
Nat