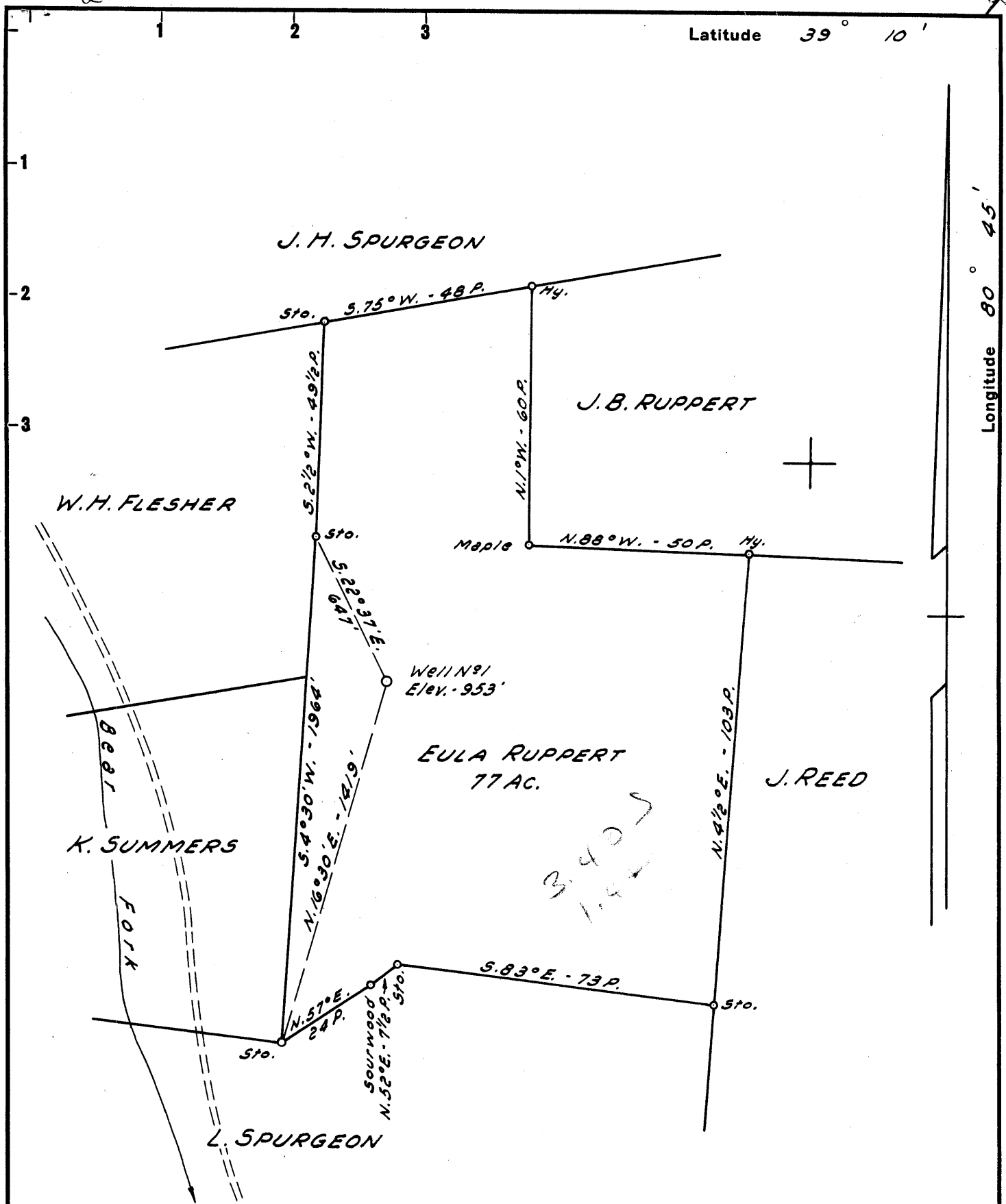


Map 268



NOTE: Minerals owned by Ruben W. Ruppert Est.

New Location..
 Drill Deeper.....
 Abandonment.....

Company	KENNETH SUMMERS
Address	SALEM, W. VA.
Farm	EULA RUPPERT
Tract	Acres 77 Lease No.
Well (Farm) No.	1 Serial No.
Elevation (Spirit Level)	953'
Quadrangle	HOLBROOK EC
County	DODDRIDGE District COVE
Engineer	JOHN W. HAMILTON
Engineer's Registration No.	2274
File No.	Drawing No.
Date	Nov. 15, 1958 Scale 1" = 30 POLES

STATE OF WEST VIRGINIA
 DEPARTMENT OF MINES
 OIL AND GAS DIVISION
 CHARLESTON

WELL LOCATION MAP
 FILE NO. DOD-268

+ Denotes location of well on United States Topographic Maps, scale 1 to 62,500, latitude and longitude lines being represented by border lines as shown.

- Denotes one inch spaces on border line of original tracing.

6-0 123 FSA



STATE OF WEST VIRGINIA
DEPARTMENT OF MINES
OIL AND GAS DIVISION

Quadrangle Haltbrook

Permit No. DOD-268

WELL RECORD

Oil or Gas Well oil
(KIND)

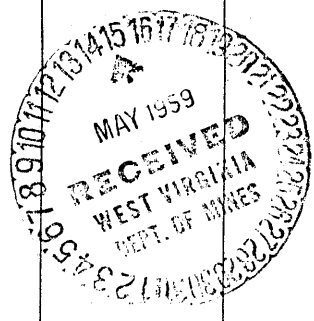
Company Kenneth Summers
Address 1309 24th Ave. and Clarksburg
Farm Eula Ruppert Acres 77
Location (waters) Bear Fork
Well No. 1 Elev. 953
District Coal County Madison
The surface of tract is owned in fee by Ruben W. Ruppert Est. Address Smithsburg
Mineral rights are owned by Ruben W. Ruppert Estate Address Smithsburg
Drilling commenced Dec 11, 1958
Drilling completed March 16, 1959
Date Shot From To
With
Open Flow /10ths Water In Inch
 /10ths Merc. in Inch
Volume Cu. Ft.
Rock Pressure lbs. hrs.
Oil bbls., 1st 24 hrs.
WELL ACIDIZED

Casing and Tubing	Used in Drilling	Left in Well	Packers
Size			Kind of Packer
16			
13			Size of
10			
8 1/4			Depth set
6 3/4	<u>1036'</u>	<u>1036'</u>	
5 3/4	<u>2000'</u>	<u>2000'</u>	
3			Perf. top
2	<u>1950'</u>	<u>1950'</u>	Perf. bottom
Liners Used			Perf. top
			Perf. bottom

CASING CEMENTED SIZE No. Ft. Date
COAL WAS ENCOUNTERED AT FEET INCHES
 FEET INCHES FEET INCHES
 FEET INCHES FEET INCHES

WELL FRACTURED 750 bbls of water
20,000 lbs of acid
RESULT AFTER TREATMENT 450 bbls of oil per day ✓
ROCK PRESSURE AFTER TREATMENT 720
Fresh Water 45' Feet Salt Water 1642-48 Feet

Formation	Color	Hard or Soft	Top	Bottom	Oil, Gas or Water	Depth	Remarks
sand&gravel			0	10			
mud	red		10	115	water	45	hole full
slate			115	125			
sand			125	130			
shell&slate			130	155			
red rock			155	175			
slate & lime			175	198			
red rock			198	203			
slate&shells			203	218			
red rock			218	251			
slate			251	272			
sand			272	310			
slate			310	334			
red rock			334	339			
slate&shells			239	537			
red rock			537	550			
slate&shells			550	567			
red rock			567	645			
slate&shells			645	676			
red rock			676	723			
lime			723	728			
slate	blue		728	735			
limegritty			735	757			
slate&shells			757	780			
red rock			780	830			
slate&shells			830	930			
lime			930	958			
slate&shells			958	978			
lime			978	995			



(over)

259

Formation	Color	Hard or Soft	Top ⁴	Bottom	Oil, Gas or Water	Depth Found	Remarks
sand			995	1008			
slate&shell			1008	1066			
sand			1066	1100			
lime gritty			1100	1125			
slate			1125	1140			
sand			1140	1175			
slate			1175	1181			
sand			1181	1190			
slate			1190	1217			
sand			1217	1330			
slate&shell			1330	1460			
sand			1460	1514			
slate&shell			1514	1595			
sand			1595	1660	water	1642-1648	
slate&shell			1660	1715			
sand			1715	1764			
slate			1764	1768			
lime			1768	1775			
slate			1775	1785			
lime	black		1785	1801			
slate			1801				
lime			- 1802	1813			
sand B.M.			1813	1817			
lime			- 1817	1886			
sand			1886	1986			
slate			1986	1992			
slate&shells			1992	2053			

show of oil 1809 to 1812; show of oil 1896; show of gas 1905-1908; show of gas and oil 1924-1930; show of oil 1943-1946.