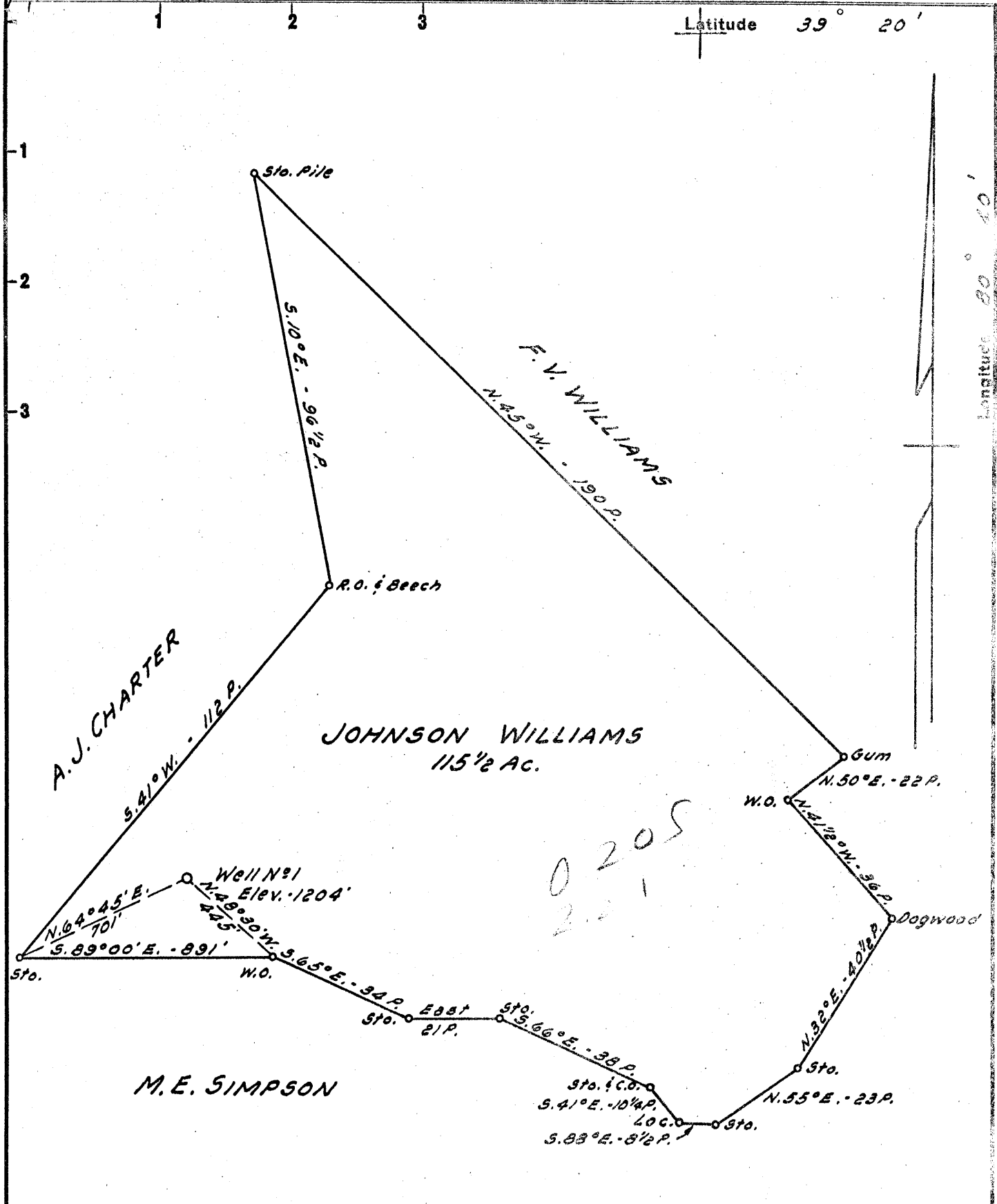


M

P



New Location..    
 Drill Deeper.....    
 Abandonment.....

Company	WILLIAMS OIL & GAS CO.
Address	CLARENCE POWELL, AGT. WEST UNION, W.VA.
Farm	JOHNSON WILLIAMS
Tract	Acres 115 1/2 Lease No.
Well (Farm) No.	1 Serial No.
Elevation (Spirit Level)	1204'
Quadrangle	CENTERPOINT SW
County	DODDRIDGE District GRANT
Engineer	JOHN W. HAMILTON
Engineer's Registration No.	2274
File No.	Drawing No.
Date	SEPT. 6, 1958 Scale 1" = 30 FEET

STATE OF WEST VIRGINIA  
 DEPARTMENT OF MINES  
 OIL AND GAS DIVISION  
 CHARLESTON

**WELL LOCATION MAP**  
 FILE NO. DOD-264

+ Denotes location of well on United States Topographic Maps, scale 1 to 62,500, latitude and longitude lines being represented by border lines as shown.

- Denotes one inch spaces on border line of original tracing.

6-6 79



STATE OF WEST VIRGINIA  
DEPARTMENT OF MINES  
OIL AND GAS DIVISION 4

Quadrangle Centerpoint

Permit No. 000-204

WELL RECORD

Oil or Gas Well GAS  
(KIND)

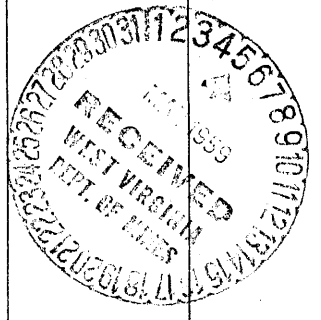
Company Williams Oil & Gas Company  
Address West Union, W. Va.  
Farm Johnson Williams Acres 100  
Location (waters) Iserals Fork  
Well No. 1 Elev. 1204'  
District Grant County Doddrige  
The surface of tract is owned in fee by Johnson Williams Address West Union  
Mineral rights are owned by Johnson Williams Address West Union  
Drilling commenced Dec. 16, 1958  
Drilling completed Feb. 5, 1959  
Date Shot \_\_\_\_\_ From \_\_\_\_\_ To \_\_\_\_\_  
With \_\_\_\_\_  
Open Flow \_\_\_\_\_ /10ths Water in \_\_\_\_\_ Inch  
50 /10ths Merc. in 1-1/2 Inch  
Volume 488,000 Cu. Ft.  
Rock Pressure 500 lbs. 13 hrs.  
Oil NO bbls., 1st 24 hrs.  
WELL ACIDIZED 500 gals.  
WELL FRACTURED with 400 BBL. water

Casing and Tubing	Used in Drilling	Left in Well	Packers
Size			Kind of Packer
16			
13			
10	<u>300'</u>	<u>NO</u>	Size of _____
8 3/4	<u>720'</u>	<u>NO</u>	
6 3/4	<u>1210'</u>	<u>NO</u>	Depth set _____
5 3/16	<u>1974'</u>	<u>1974</u>	
3			Perf. top _____
2			Perf. bottom _____
Liners Used	<u>NONE</u>	<u>NONE</u>	Perf. top _____
			Perf. bottom _____

CASING CEMENTED 5-1/2 SIZE 1974 No. Ft. 1/25/59 Date  
COAL WAS ENCOUNTERED AT \_\_\_\_\_ FEET \_\_\_\_\_ INCHES  
\_\_\_\_\_ FEET \_\_\_\_\_ INCHES FEET \_\_\_\_\_ INCHES  
\_\_\_\_\_ FEET \_\_\_\_\_ INCHES FEET \_\_\_\_\_ INCHES

RESULT AFTER TREATMENT 1/2 million cu. ft.  
ROCK PRESSURE AFTER TREATMENT 500 lbs.  
Fresh Water 2000 cu. ft. Salt Water 1570' hole full Feet

Formation	Color	Hard or Soft	Top	Bottom	Oil, Gas or Water	Depth	Remarks
red rock			0	100			
Sand			100	110			
Slate	Black		110	120			
Slate			120	190			
Sand			190	200	Water	200'	
red rock			200	240	Water	240'	2 Baler per hr.
Slate & Shells			240	325			
Sand			325	350			
Slate			350	374			
Lime		Hard	374	394			
red rock			394	425			
Lime			425	462			
red rock			462	468			
Slate			468	600			
Lime			600	618			
Slate & Shells			618	670			
Sand			670	700			
Slate & Shells			700	735			
red rock			735	765			
Sand			765	785			
Slate			785	838			
Red rock			838	865			
Lime			865	877			
Slate			877	1050			
red rock			1050	1090			
Slate			1090	1140			
Sand			1140	1150			
Slate			1150	1180			
Lime			1180	1200			



(over)

Formation	Color	Hard or Soft	Top 4	Bottom	Oil, Gas or Water	Depth Found	Remarks
Slate			1200	1220			
Lime		Gritty	1220	1270			
Sand			1270	1356			
Slate & shells			1356	1385			
Sand			1385	1580	Water	1570'	Hole full
Slate			1580	1590			
Sand			1590	1622			
Slate			1622	1655			
Lime		Gritty	1655	1680			
Slate			1680	1695			
Sand			1695	1720			
B-Slate			1720	1740			
Sand			1740	1750			
Slate	Black		1750	1773			
Sand		Hard	1773	1852			
Slate			1852	1880			
Sand			1880	1892			
Slate			1892	1920			
Lime			1920	1945			
Blue Monday			1945	1960			
Break			1960	1962			
Sand			1962	1974			
Big Lime			1974	2049	Gas	2060'	
Sand			2049	2130	Gas	2070' to 2083'	
Slate			2130				

Date March 2, 1959

APPROVED Williams Oil & Gas Co., Owner

By Clarence Powell, Agent  
(Title)